

# PLAT OF SURVEY

THE NE1/4 OF THE NW1/4, AND NW1/4 OF THE NE1/4,  
SECTION 14, T33N-R12E, TOWN OF AINSWORTH,  
LANGLADE COUNTY, WISCONSIN

RECORD # 20122  
LANGLADE COUNTY SURVEYORS OFFICE  
DATE FILED: 7/6/16 BY: D. TRUSTY

THE NE1/4 NW1/4 CONTAINS 39.26 TOTAL ACRES, OF WHICH;  
0.29 ACRES = ROAD RIGHT-OF-WAY  
0.34 ACRES = EXISTING FIELD  
3.08 ACRES = CSM LOT  
1.52 ACRES = VEGETATED LAKE BED  
4.44 ACRES = WATER  
29.59 ACRES = UPLAND (EXCLUDING CSM)

THE NW1/4 NE1/4 CONTAINS 38.19 TOTAL ACRES, OF WHICH;  
5.96 ACRES = EXISTING FIELD  
9.45 ACRES = VEGETATED LAKE BED  
4.01 ACRES = WATER  
18.77 ACRES = UPLAND

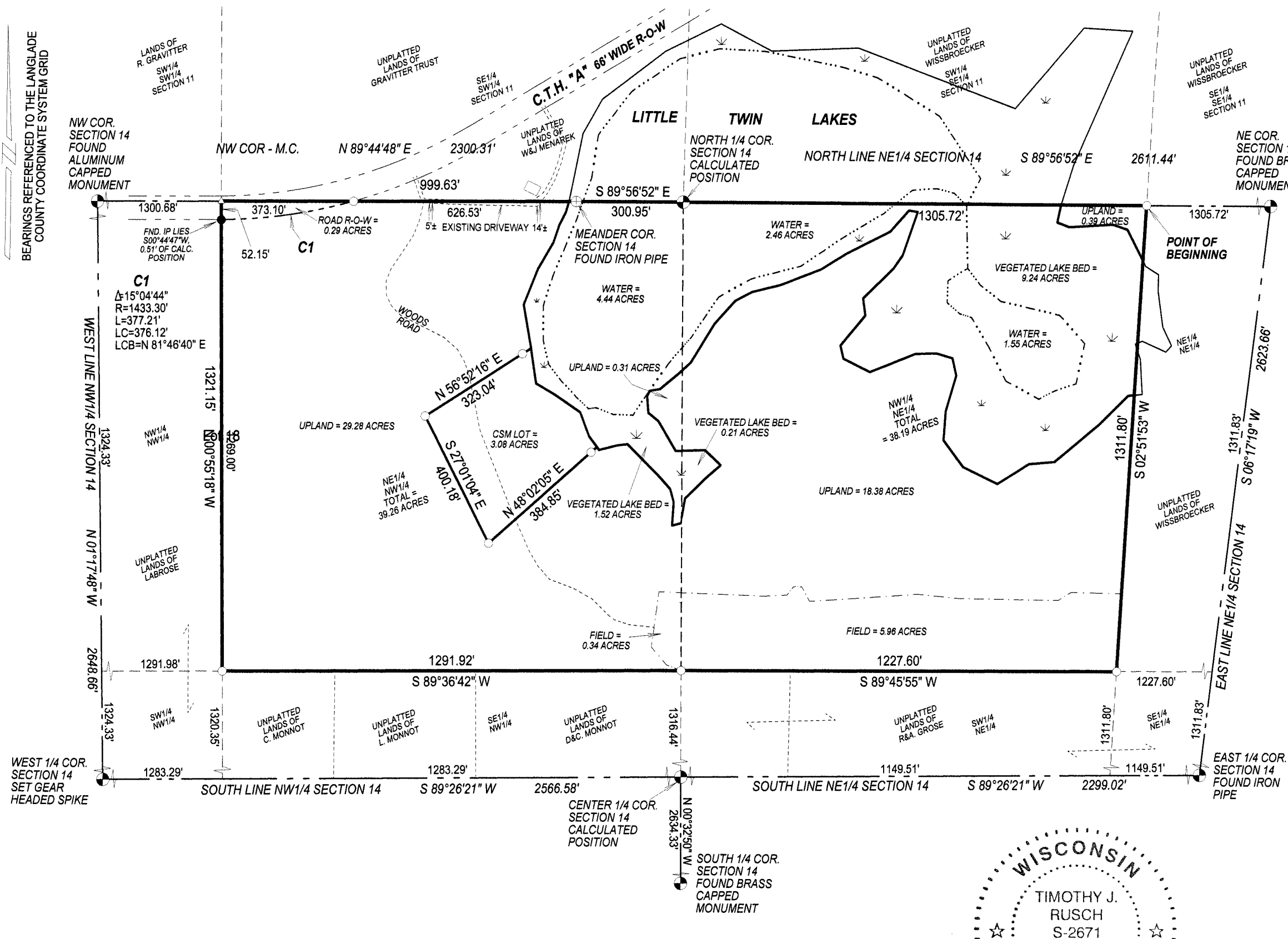
I, TIMOTHY J. RUSCH, REGISTERED LAND SURVEYOR, DO  
HEREBY CERTIFY:

THAT I HAVE SURVEYED AND MAPPED BY THE ORDER OF  
PETER TSCHOHL, OWNER, THE NE1/4 OF THE NW1/4, AND  
NW1/4 OF THE NE1/4, SECTION 14, T33N-R12E. BEING  
DESCRIBED AS FOLLOWS:

COMMENCING AT THE NORTHEAST CORNER OF SECTION  
14; THENCE N89°56'52"W, ALONG THE NORTH LINE OF THE  
NE1/4 NE1/4, 1305.72 FEET TO THE POINT OF BEGINNING;  
THENCE S02°51'23"W, ALONG THE EAST LINE OF THE  
NW1/4 NE1/4, 1311.80 FEET; THENCE S89°45'55"W, ALONG  
THE SOUTH LINE OF THE NW1/4 NE1/4, 1227.80'; THENCE  
S89°36'42"W, ALONG THE SOUTH LINE OF THE NE1/4 NW1/4,  
1291.92'; THENCE N00°55'18"W, ALONG THE WEST LINE OF  
THE NE1/4 NW1/4, 1321.15 FEET; THENCE N89°44'48"E,  
999.63 FEET; THENCE S89°56'52"E, 300.95 FEET; THENCE  
S89°56'52"E, ALONG THE NORTH LINE OF THE NW1/4 NE1/4,  
1305.72 FEET TO THE POINT OF BEGINNING.

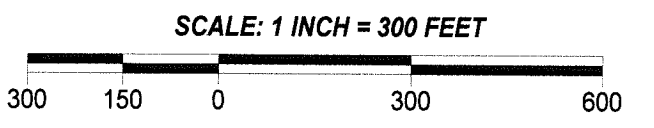
THAT THIS SURVEY WAS FOR THE PURPOSE OF LOCATING  
PROPERTY BOUNDARIES ONLY. OTHER GEOGRAPHICAL  
FEATURES WERE NOT MAPPED.

THAT THIS IS A TRUE AND CORRECT REPRESENTATION OF  
THE BOUNDARIES SURVEYED TO THE BEST OF MY  
KNOWLEDGE AND BELIEF.



BEARINGS REFERENCED TO THE LANGLADE  
COUNTY COORDINATE SYSTEM GRID

SURVEYED BY:  
RUSCH ENGINEERING & SURVEYING LLC  
400 RUSCH ROAD  
ANTIGO, WI 54409  
(715)623-5044  
PROJECT # 14-5309



- LEGEND**
- △ CALCULATED POSITION
  - FOUND 1" IRON PIPE
  - SET 1.05" O.D. X 24" LONG IRON PIPE WEIGHING 1.13 LBS/LF

