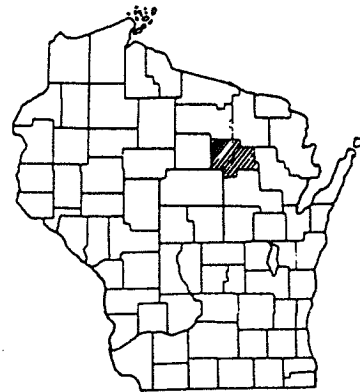


COUNTY AND HIGHWAY	ROUTE AND SECTION	CLASS AND AGREEMENT		F.P.D. REGION DIVISION	SHEET NUMBER
		STATE	FEDERAL		
346	937.0		113	4 WIS.	1

**INDEX OF SHEETS**

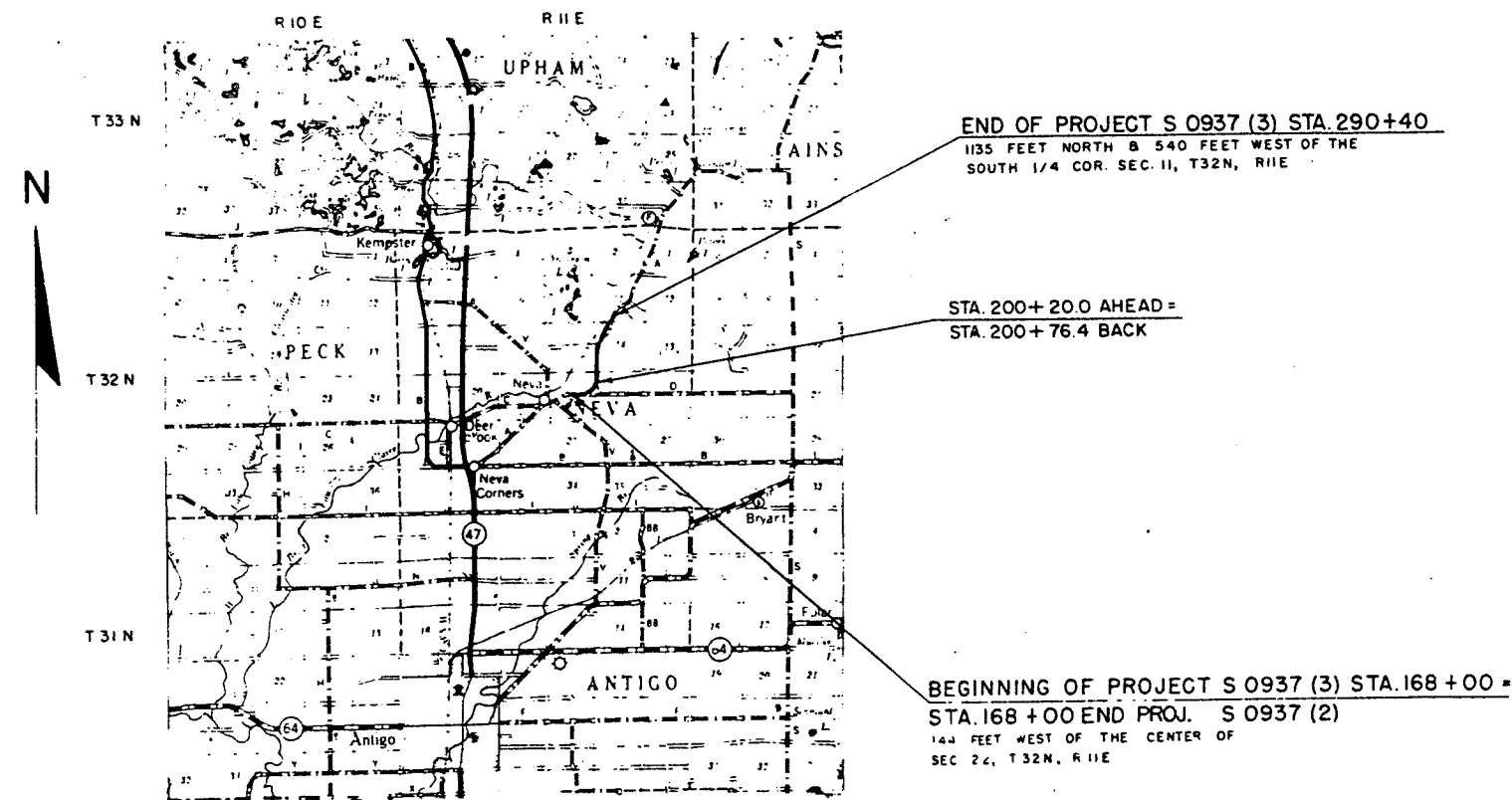
- SHEET NO. 1 TITLE
- SHEET NO. 2 TYPICAL CROSS SECTIONS
- SHEET NO. 2 ESTIMATE OF QUANTITIES
- SHEET NO. 2A MISCELLANEOUS QUANTITIES
- SHEET NO. — RIGHT OF WAY PLAT
- SHEET NO. 3-7 PLAN AND PROFILE STA. 168+00 TO STA. 290+40
- SHEET NO. 8-8.6 STANDARD DETAILS
- SHEET NO. — DRAINAGE STRUCTURES
- SHEET NO. 9-17 I. B. M. COMPUTATION SHEETS



STATE OF WISCONSIN  
**STATE HIGHWAY COMMISSION OF WISCONSIN**

PLAN AND PROFILE OF PROPOSED  
**NEVA — WOLF RIVER ROAD**  
C.T.H. "A"  
LANGLADE COUNTY  
PROJECT S0937(3)

PLAN 1 IN. = 100 FT.  
PROFILE HOR. 1 IN. = 100 FT. VERT. 1 IN. = 10 FT.  
CROSS SECTIONS HOR. 1 IN. = 5 FT. VERT. 1 IN. = 5 FT.

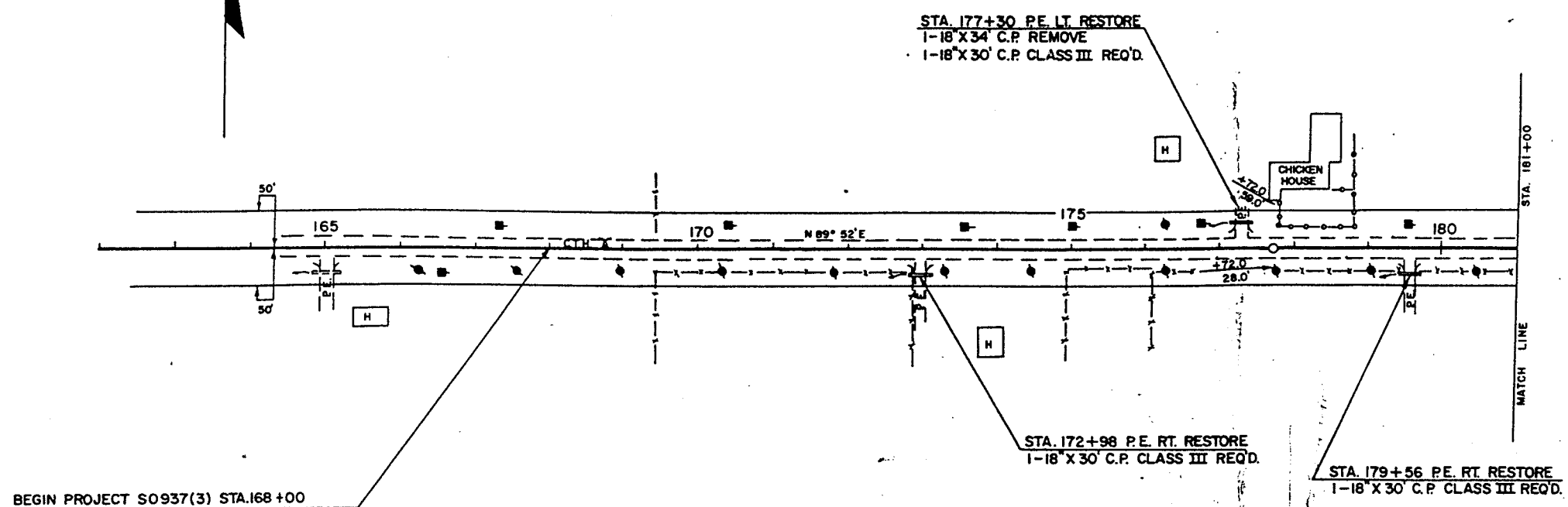


CONVENTIONAL SIGNS	
STATE LINE	-----
COUNTY LINE	-----
TOWNSHIP OR RANGE LINE	-----
SECTION LINE	-----
RIGHT OF WAY LINE	-----
INT RIGHT OF WAY LINE	-----
ENCE { WOVEN	-----
BARBED	-----
OR CITY LIMITS	-----
LINE	-----
LEED WAY OR P.E.	-----
ROADS	-----
OR SURVEY LINE	-----
CULVERTS IN PLACE	-----
CULVERTS REQUIRED	-----
DROP INLET	-----
POWER POLE	-----
TELEPHONE OR TELEGRAPH POLE	-----
RIGHT OF WAY MARKERS	-----
REFERENCE STAKE FOR HUBS ONLY	-----
MARSH	-----
HEDGE	-----
TREES	-----
GROUND ELEVATION	DATUM LINE 73.9
GRADE ELEVATION	DATUM LINE 75.16

**LAYOUT**  
SCALE 2 MILES  
TOTAL NET LENGTH OF CENTERLINE = 2.329 MI.

RECORD # 20127  
LANGLADE COUNTY SURVEYORS OFFICE  
DATE FILED: 9/5/95 BY: D. TLUSTY

STATE HIGHWAY COMMISSION OF WISCONSIN MADISON WIS	
SURVEYOR D.L. JOHNSON DIVISION COMPUTER MC NOWN DISTRICT CHECKER P. JOHNSON	NOTE BOOK 213, 2 H. O. CHECKER CORRECT
CORRECT.	
DATE <u>5/24/65</u> <u>Max J. Tuttle</u> DISTRICT ENG.	
RECOMMENDED FOR APPROVAL	
DATE <u>5/24/65</u> <u>E.J. Byrkit</u> CHIEF DESIGN EN.	
APPROVED	
DATE <u>5/24/65</u> <u>E.L. Rust</u> STATE HIGHWAY EN.	
DEPARTMENT OF COMMERCE BUREAU OF PUBLIC ROADS	
APPROVED	
DIVISION ENG.	



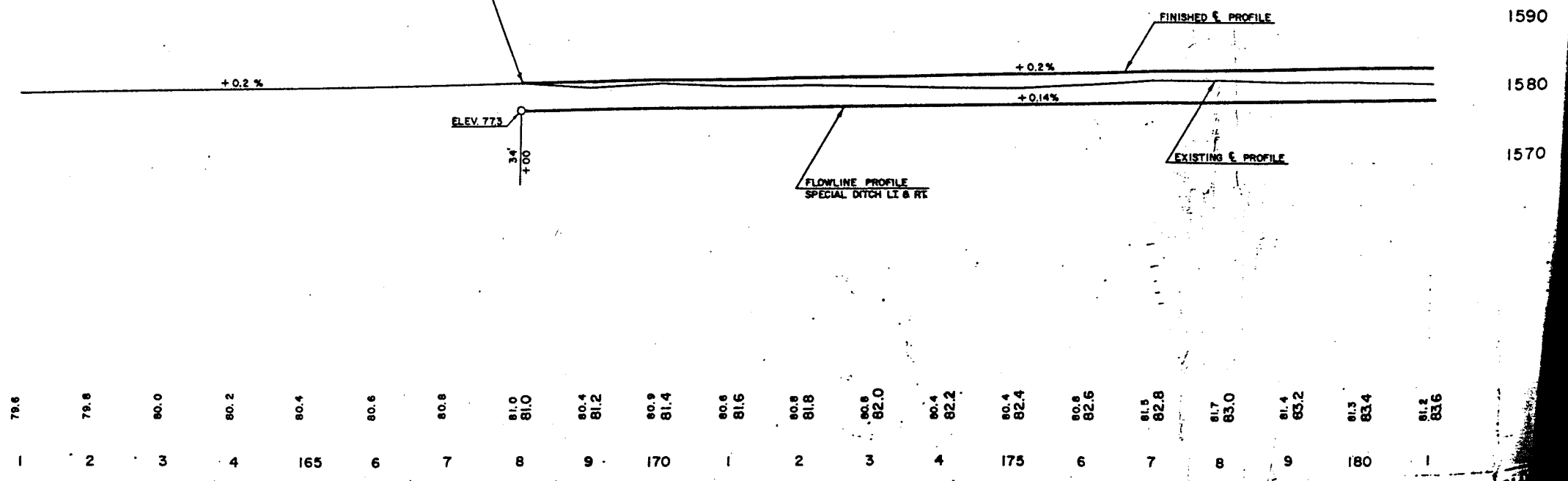
BEGIN PROJECT S0937(3) STA.168+00

NET CENTERLINE LENGTH STA.168+00 - 181+00 = 1300.00 LIN. FT.

BENCH MARKS

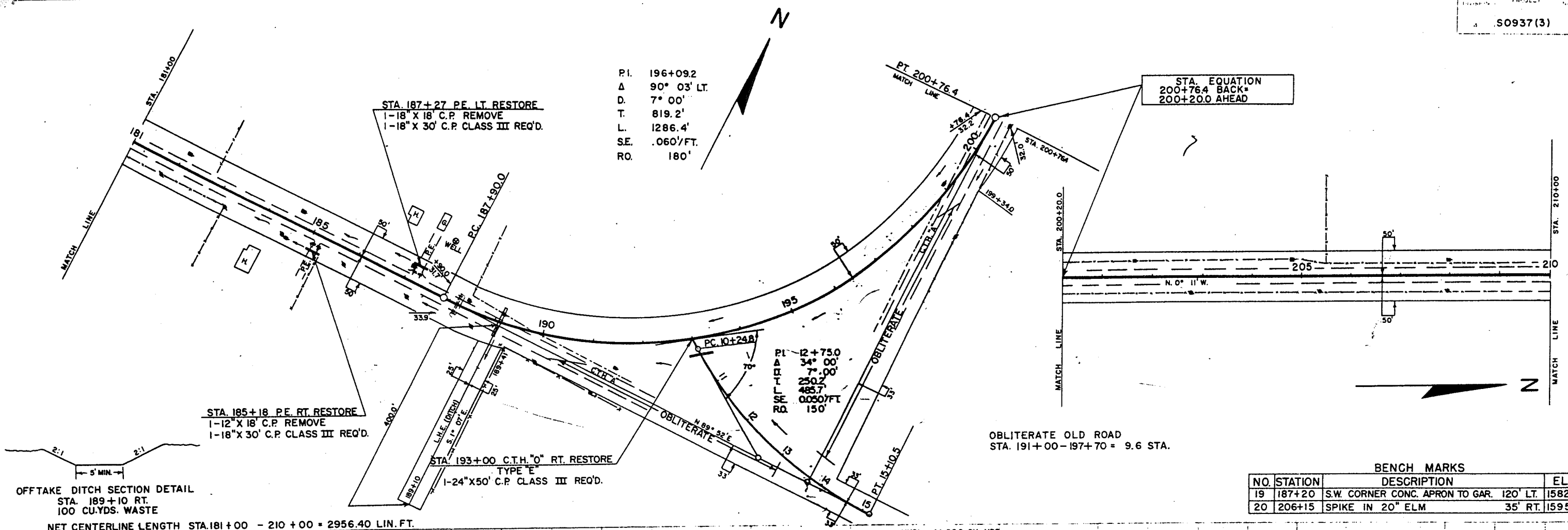
NO.	STATION	DESCRIPTION	ELEV.
17	165+25	SPIKE IN 30" SPRUCE 80' RT	1579.49
18	176+60	2" HUB S.W. COR. CHICKEN H. 65' LT	1582.17

UNCL. 2407 CU YDS  
 FILL 1602 CU YDS  
 SHG. 50 %



79.6	79.8	80.0	80.2	80.4	80.6	80.8	81.0	81.2	81.4	81.6	81.8	82.0	82.2	82.4	82.6	82.8	83.0	83.2	83.4	83.6
1	2	3	4	165	6	7	8	9	170	1	2	3	4	175	6	7	8	9	180	1

20 684  
12 713



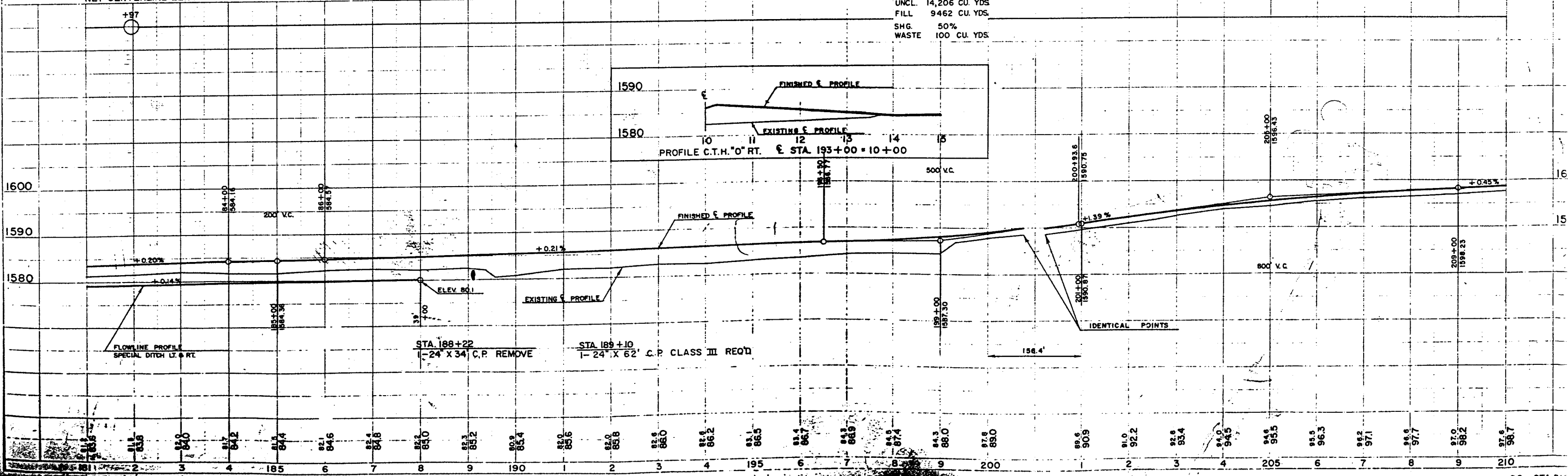
OFFTAKE DITCH SECTION DETAIL  
STA. 189+10 RT.  
100 CU.YDS. WASTE

NET CENTERLINE LENGTH STA.181+00 - 210 + 00 = 2956.40 LIN. FT.

BENCH MARKS

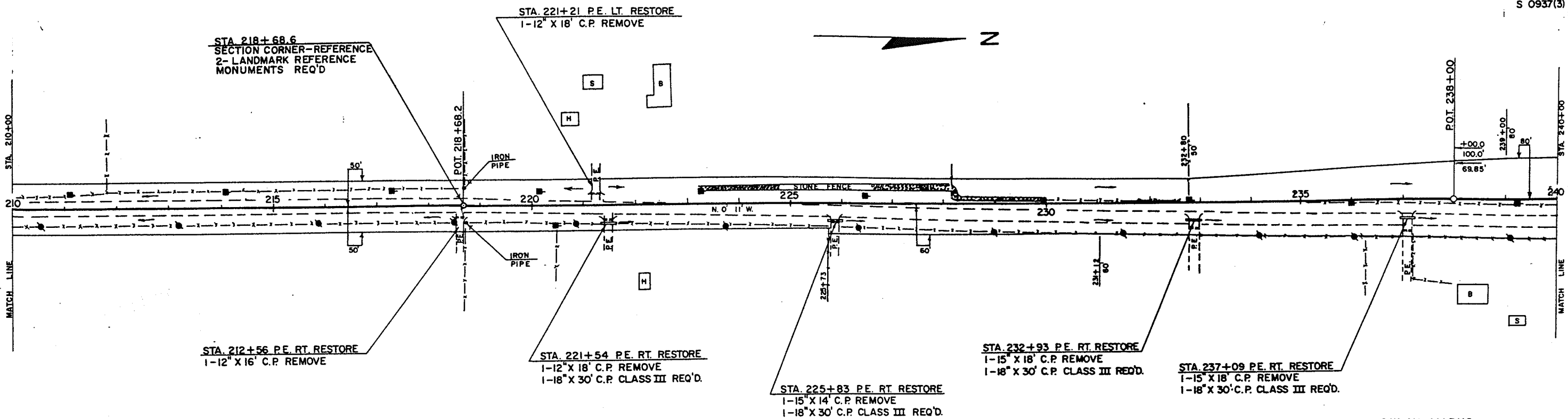
NO.	STATION	DESCRIPTION	ELEV.
19	187+20	S.W. CORNER CONC. APRON TO GAR. 120' LT.	1582.98
20	206+15	SPIKE IN 20" ELM	35' RT. 1595.86

UNCL. 14,206 CU. YDS  
FILL 9462 CU. YDS  
SHG. 50%  
WASTE 100 CU. YDS



STA. 188+22  
1-24" X 34" C.P. REMOVE

STA. 189+10  
1-24" X 62" C.P. CLASS III REQ'D



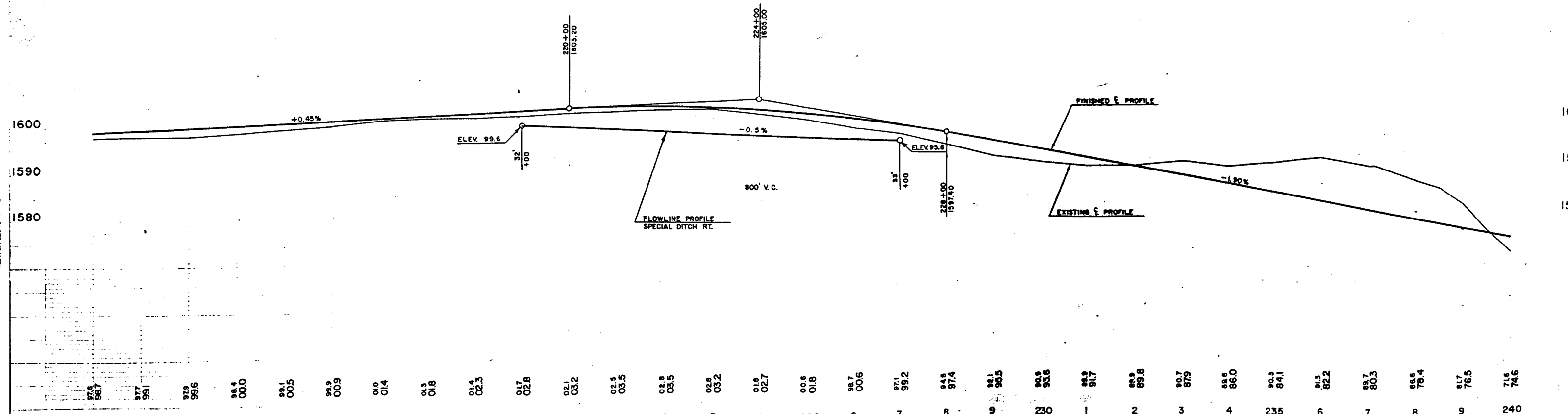
NET CENTERLINE LENGTH STA.210+00 - 240+00 = 3000.00 LIN. FT.

**BENCH MARKS**

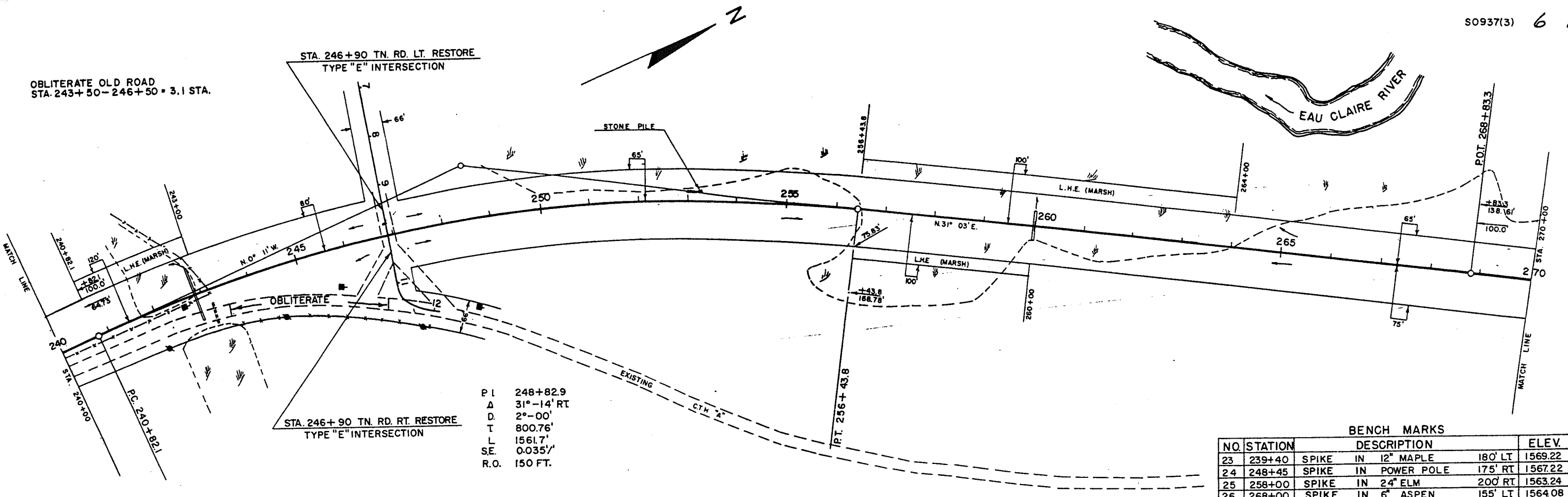
NO.	STATION	DESCRIPTION	ELEV.
20	206+15	SPIKE IN 20" ELM 35 RT	1595.86
21	219+00	" 20" MAPLE 45 RT	1601.20
22	232+30	" 24" ELM 90 RT	1593.33
23	239+40	" 12" MAPLE 180 LT	1669.22

+02  
 UNCL. 11,953 CU. YDS.  
 FILL 8502 CU. YDS.  
 SHG. 40%  
 MARSH 545 CU. YDS.

NOTE: FILL QUANTITY INCLUDES 55 CU. YDS. MARSH SUBSIDENCE



97.6	97.7	97.9	98.4	99.1	99.9	01.0	01.3	01.4	01.7	02.1	02.5	02.8	02.8	03.2	01.8	00.6	97.1	94.8	98.1	90.9	88.9	88.9	90.7	88.6	90.3	91.3	89.7	88.6	81.7	71.6
58.7	59.1	99.6	00.0	00.5	00.9	01.4	01.8	02.3	02.8	03.2	03.5	03.5	03.2	02.7	01.8	00.6	99.2	97.4	85.5	83.6	81.7	89.8	87.9	86.0	84.1	82.2	80.3	78.4	76.5	74.6
																	7	8	9	230	1	2	3	4	235	6	7	8	9	240



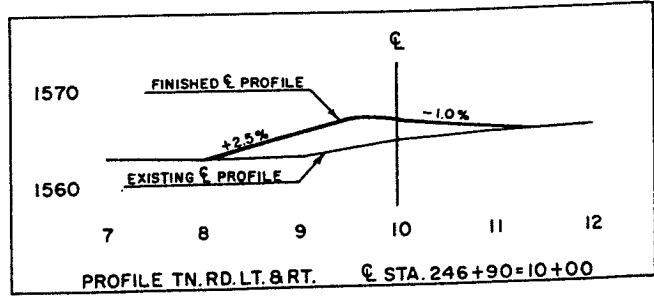
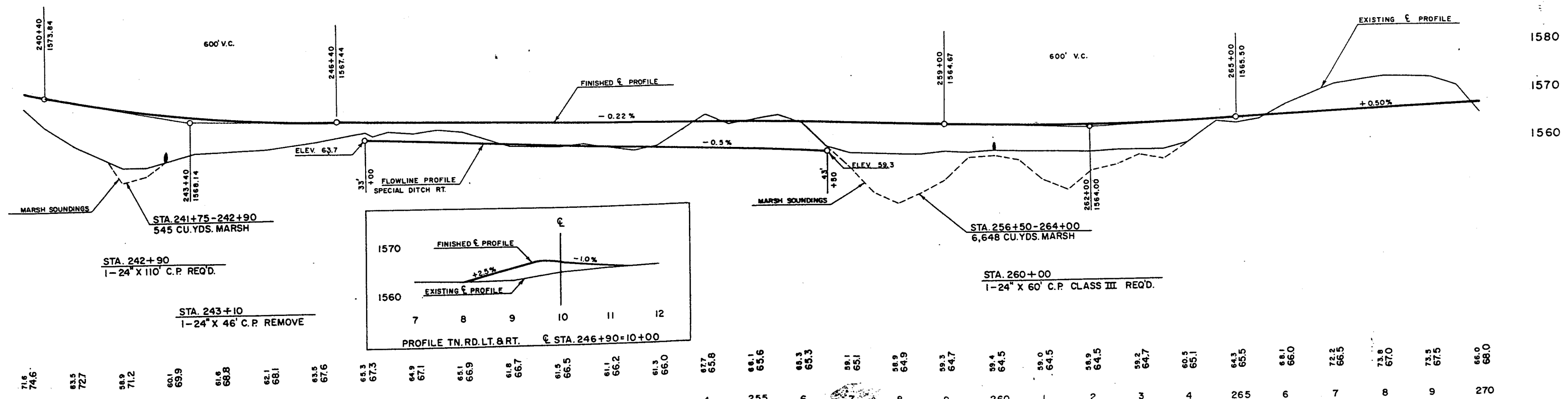
P I 248+82.9  
 Δ 31°-14' RT  
 D 2°-00'  
 T 800.76'  
 L 1561.7'  
 SE 0.035%  
 R.O. 150 FT.

BENCH MARKS				
NO.	STATION	DESCRIPTION		ELEV.
23	239+40	SPIKE IN 12" MAPLE	180' LT	1569.22
24	248+45	SPIKE IN POWER POLE	175' RT	1567.22
25	258+00	SPIKE IN 24" ELM	200' RT	1563.24
26	268+00	SPIKE IN 6" ASPEN	155' LT	1564.08

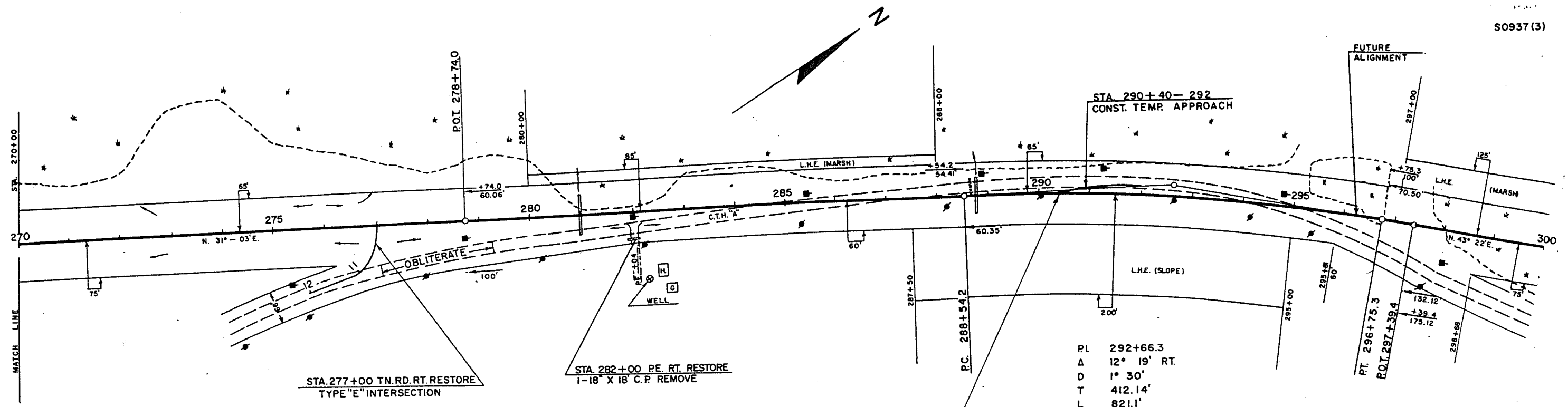
NET CENTERLINE LENGTH STA. 240+00 - 270+00 = 3000.00 LIN. FT.

UNCL = 41,033 CU. YDS.  
 FILL = 23,220 CU. YDS.  
 SHG = 39%  
 MARSH = 6,648 CU. YDS.  
 BORROW = 397 CU. YDS.

NOTE: FILL QUANTITY INCLUDES 665 CU. YDS. MARSH SUBSIDENCE



71.6 74.6  
 63.5 72.7  
 58.9 71.2  
 60.1 69.9  
 61.6 68.8  
 62.1 68.1  
 63.5 67.6  
 65.3 67.3  
 64.9 67.1  
 65.1 66.9  
 61.8 66.7  
 61.5 66.5  
 61.1 66.2  
 61.3 66.0  
 67.7 65.8  
 68.1 65.6  
 68.3 65.3  
 68.1 65.1  
 68.9 64.9  
 69.3 64.7  
 69.4 64.5  
 69.0 64.5  
 68.9 64.5  
 69.2 64.7  
 60.5 65.1  
 64.3 65.5  
 68.1 66.0  
 72.2 66.5  
 73.8 67.0  
 73.5 67.5  
 66.0 68.0



STA. 277+00 TN. RD. RT. RESTORE  
TYPE "E" INTERSECTION

STA. 282+00 PE. RT. RESTORE  
1-18" X 18" C.P. REMOVE

OBLITERATE OLD ROAD  
STA. 277+00 - 279+30 = 2.3 STA.

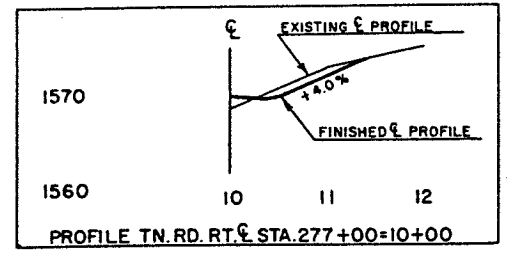
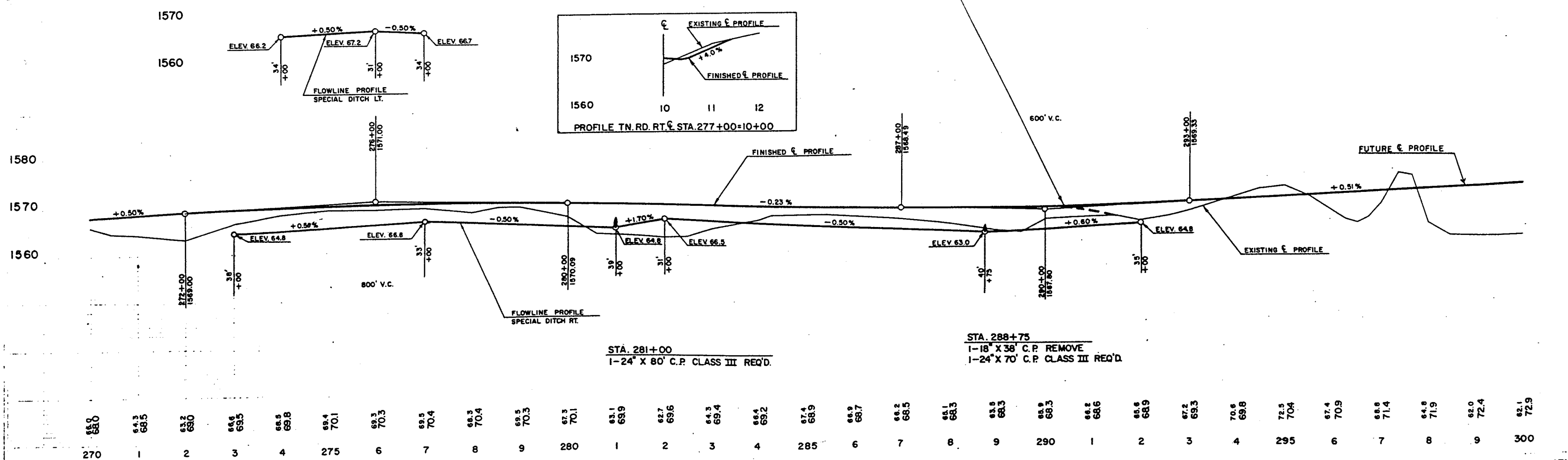
PI 292+66.3  
Δ 12° 19' RT.  
D 1° 30'  
T 412.14'  
L 821.1'  
S.E. 0.027'/FT.  
R.O. 150'

BENCH MARKS

NO.	STATION	DESCRIPTION	ELEV.
26	268+00	SPIKE IN 6" ASPEN 155' LT.	1564.08
27	279+30	SPIKE IN 5" ASPEN 125' RT.	1572.75
28	289+15	SPIKE IN 16" TAMARACK 85' LT.	1563.20
29	296+15	SPIKE IN 10" ASPEN 125' RT.	1575.91

END OF PROJECT S0937(3)  
STA. 290+40

NET CENTERLINE LENGTH STA. 270+00 - 290+40 = 2040.00 LIN. FT.



STA. 281+00  
1-18" X 38" C.P. REMOVE  
1-24" X 80" C.P. CLASS III REQ'D.

STA. 288+75  
1-18" X 38" C.P. REMOVE  
1-24" X 70" C.P. CLASS III REQ'D.

65.9	64.3	63.2	66.6	66.5	69.4	69.3	69.5	68.3	69.5	67.3	63.1	62.7	64.3	66.4	67.4	66.9	66.2	66.1	63.5	65.9	66.2	66.6	66.6	67.2	70.6	72.5	67.4	66.9	64.8	62.0	62.1
68.0	68.5	69.0	69.5	69.8	70.1	70.3	70.4	70.4	70.3	70.1	69.9	69.6	69.4	69.2	68.9	68.7	68.5	68.3	68.3	68.3	68.6	68.9	69.3	69.8	70.4	70.9	71.4	71.9	72.4	72.9	
270	1	2	3	4	275	6	7	8	9	280	1	2	3	4	285	6	7	8	9	290	1	2	3	4	295	6	7	8	9	300	