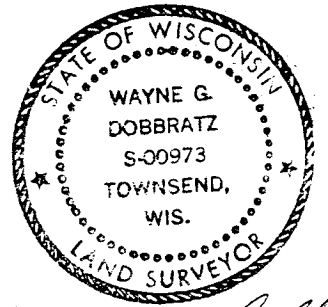
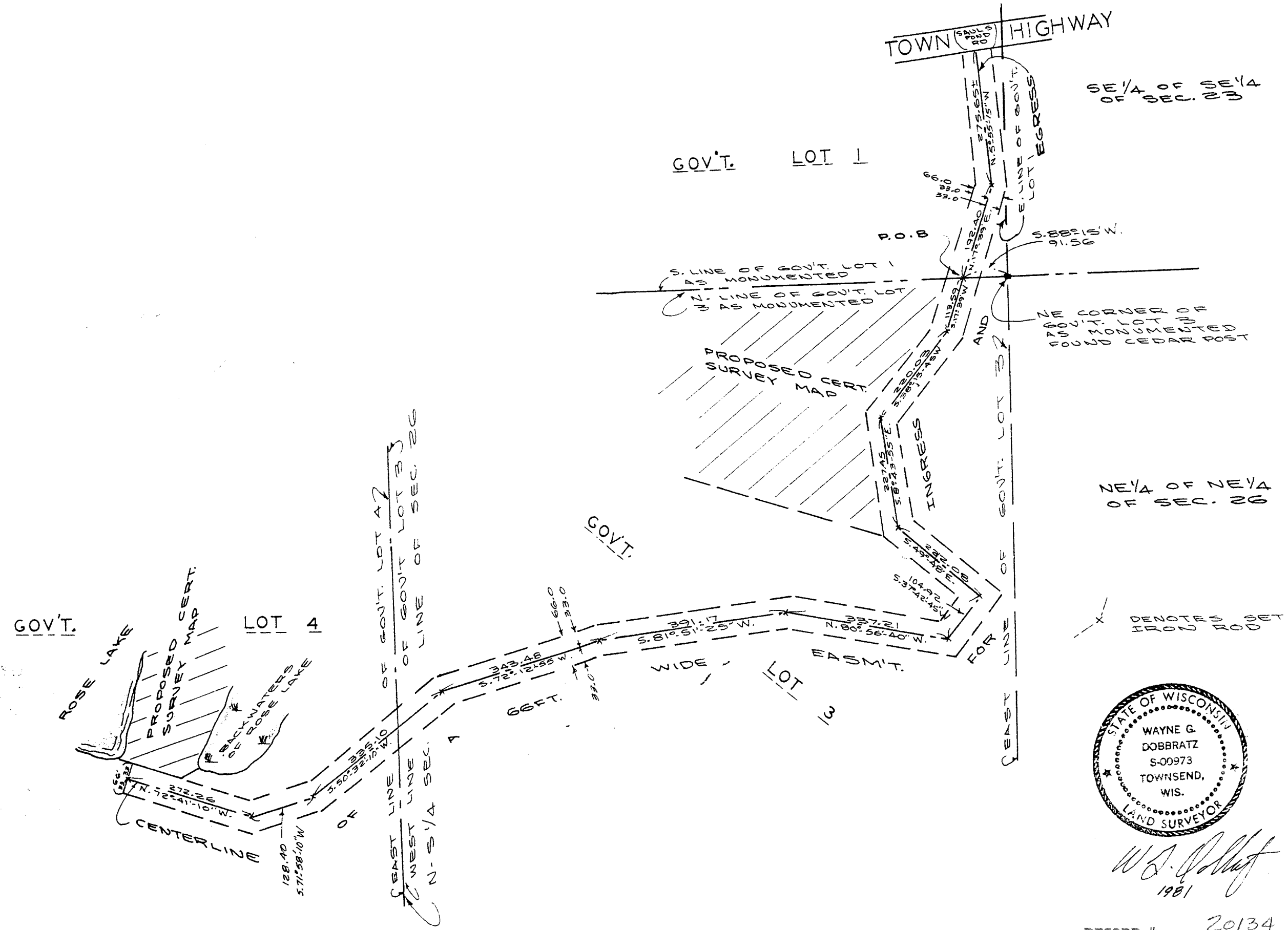
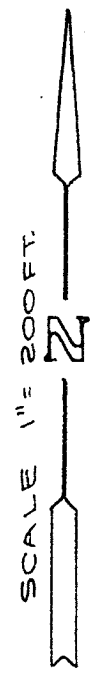


SKETCH  
 SHOWING A 66.0FT. WIDE EASEMENT FOR INGRESS AND EGRESS OVER PART OF GOV'T. LOT 1 OF SECTION 23 AND PART OF GOV'T. LOTS 3 AND 4 OF SECTION 26, ALL IN TOWNSHIP 32 NORTH, RANGE 14 EAST.

PREPARED FOR: HANNAH KIELCHESKI



*Wayne G. Dobbratz*  
 1981



RECORD # 20134  
 LANGLADE COUNTY SURVEYORS OFFICE  
 DATE FILED: 8/14/96 BY: D. Toney