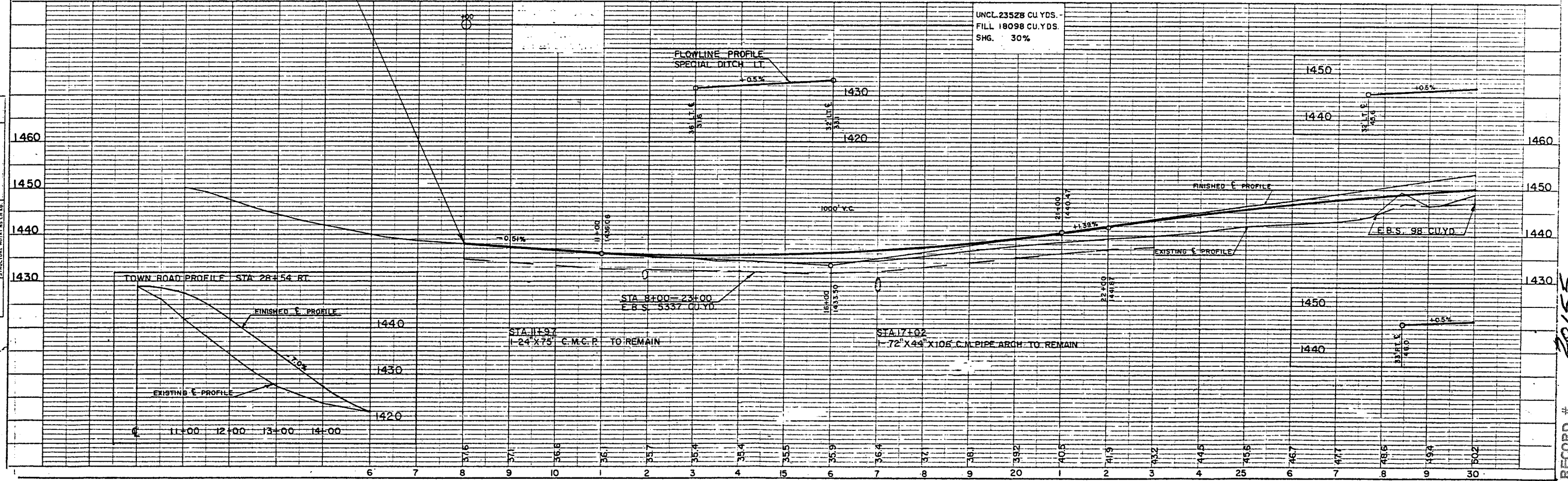


BENCH MARKS

NO	STATION	DESCRIPTION	ELEV.
1	11+75	SPIKE IN 10' MAPLE 50' RT.	1434.30
2	20+35	SPIKE IN POWER POLE 75' LT.	1443.63

NET CENTERLINE LENGTH STA. 8+00-30+00 = 2200 LIN. FT.



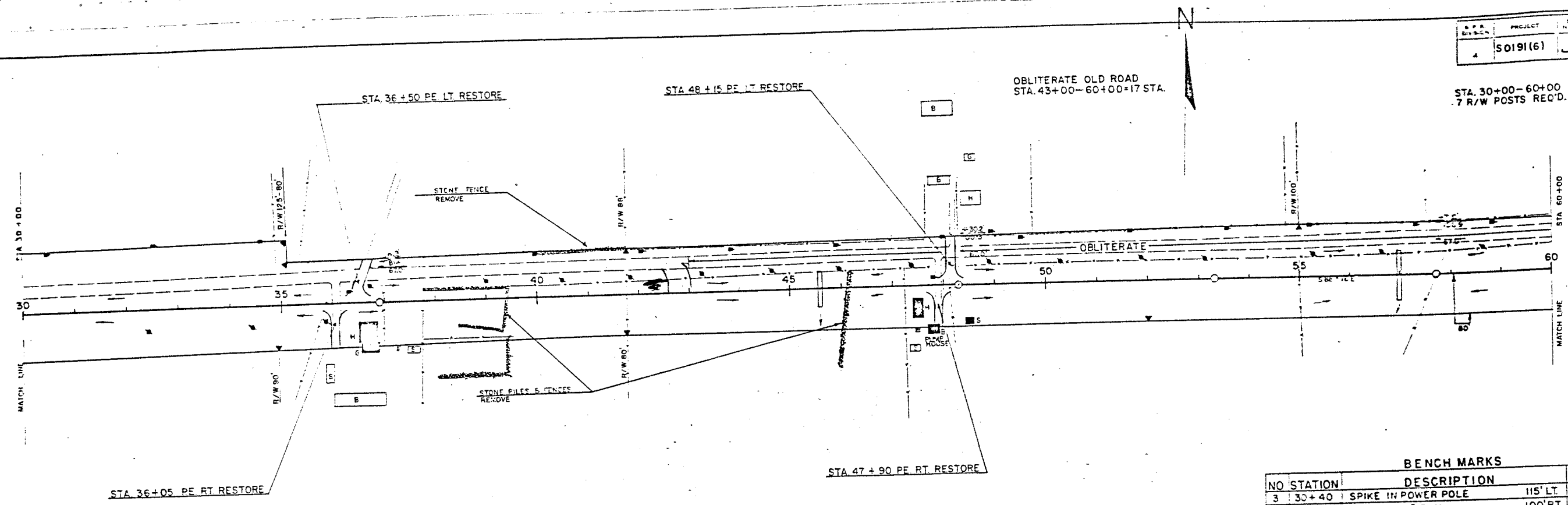
UNCL. 23528 CU. YDS.  
FILL 18098 CU. YDS.  
SHG. 30%

RECORD # 20155  
LANGLADE COUNTY SURVEYORS OFFICE  
DATE FILED: 12/17/99 BY: DAVID T.

PLAN  
SURVEYED BY: G. W. WHEAT  
DRAWN BY: G. W. WHEAT  
CHECKED BY: G. W. WHEAT  
NO. 195

PROFILE  
ELEVATION: 1:4  
HORIZONTAL: 1:40  
VERTICAL: 1:40  
NOTE BOOK GRADES CHECKED BY: G. W. WHEAT  
NO. 195

PROJECT	SHEET	TOTAL
50191(6)	5	107

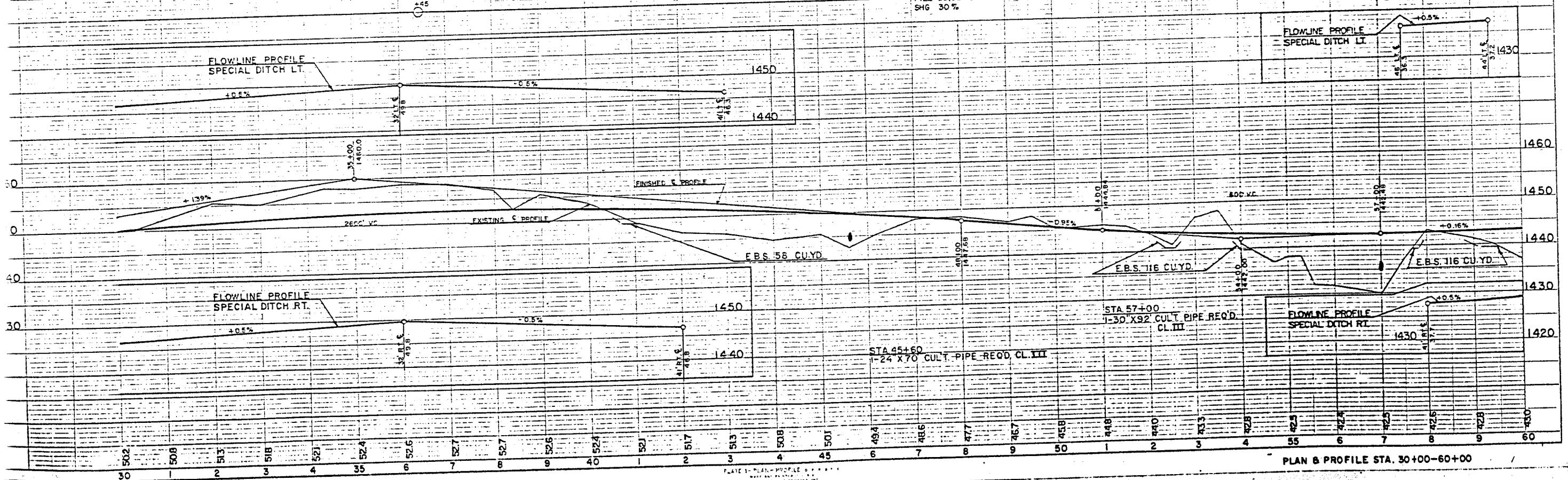


**BENCH MARKS**

NO	STATION	DESCRIPTION	ELEV.
3	30+40	SPIKE IN POWER POLE	115' LT. 1452.69
4	41+70	SPIKE IN 8" ELM	100' RT. 1449.53
5	49+50	SPIKE IN 14" APPLE TREE	110' LT. 1450.20
6	57+45	SPIKE IN TRIPLE 10" ELM	110' LT. 1439.38

NET CENTERLINE LENGTH STA. 30+00-60+00 = 3000 LIN. FT.

UNCL. 27,216 CU. YDS.  
FILL 20,937 CU. YDS.  
SHG 30%

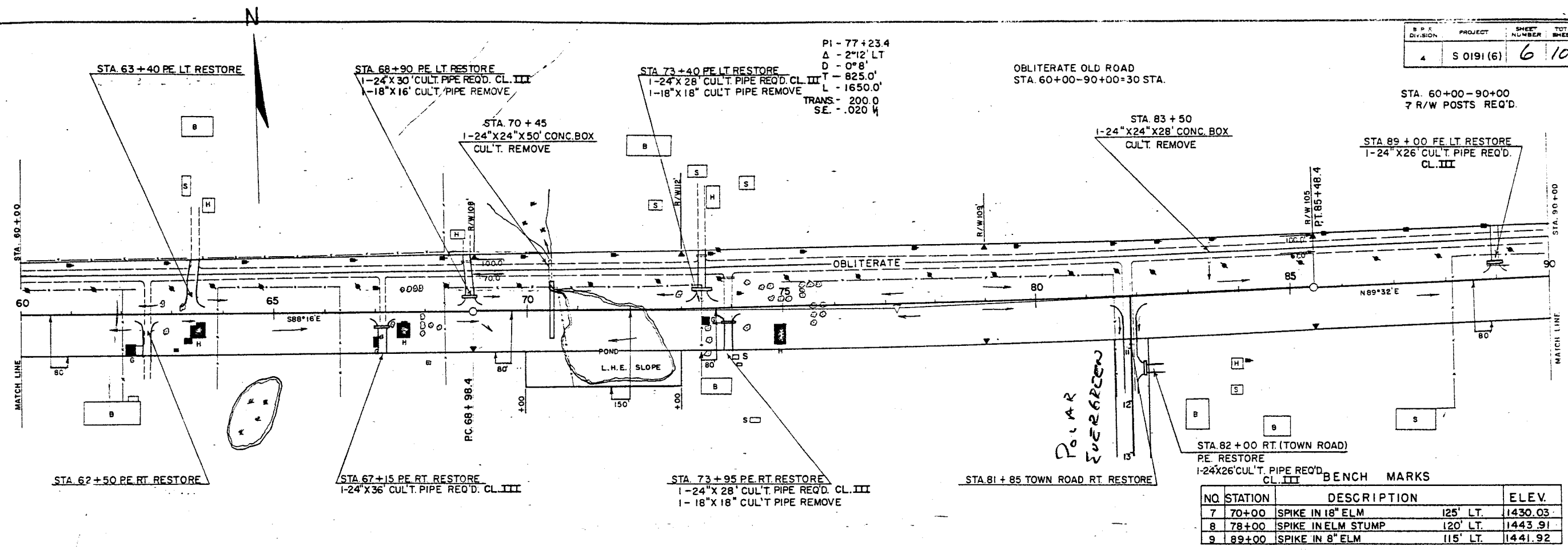


PLAN & PROFILE STA. 30+00-60+00

DATE  
BY  
CHECKED  
SURVEYED  
PLOTTED  
NOTE BOOK  
NO. 1718

DATE  
BY  
CHECKED  
SURVEYED  
PLOTTED  
NOTE BOOK  
NO. 1718

1430	
1440	
1450	
1460	



PI - 77+23.4  
 $\Delta$  - 2°12' LT  
 $D$  - 0°8'  
 $L$  - 825.0'  
 $L$  - 1650.0'  
 $TRANS$  - 200.0  
 $SE$  - .020  $\frac{1}{4}$

OBLITERATE OLD ROAD  
 STA. 60+00-90+00+30 STA.

STA. 60+00-90+00  
 7 R/W POSTS REQ'D.

STA. 83+50  
 1-24\"/>

STA. 89+00 PE LT RESTORE  
 1-24\"/>

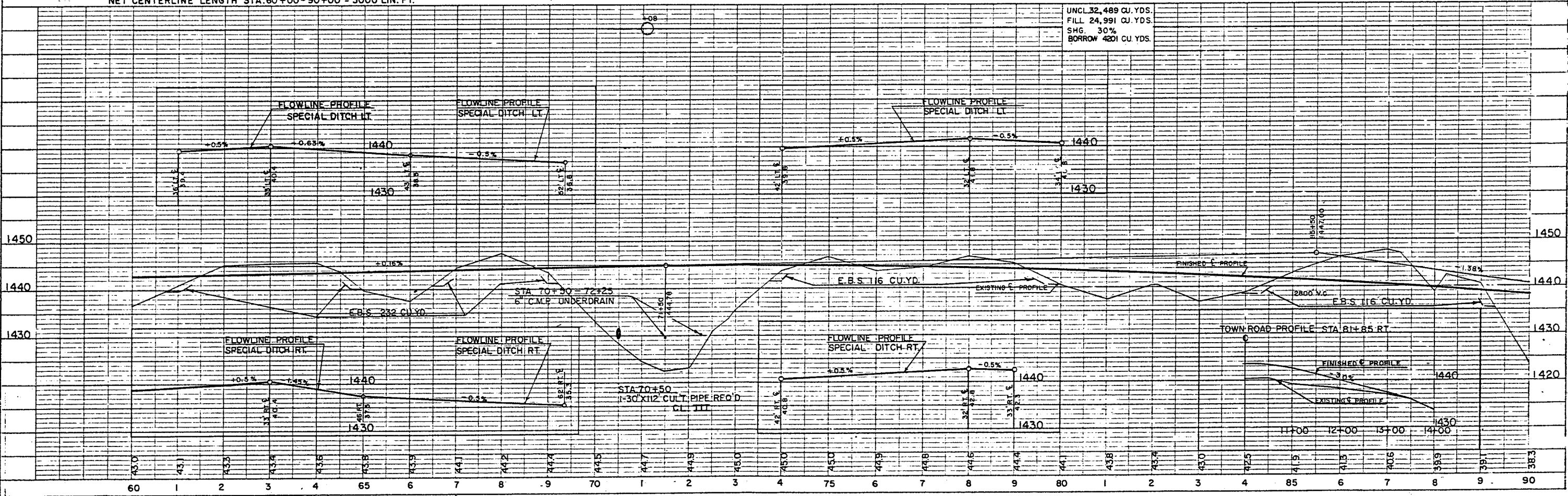
NET CENTERLINE LENGTH STA. 60+00-90+00 = 3000 LIN. FT.

UNCL. 32,489 CU. YDS.  
 FILL 24,991 CU. YDS.  
 SHG. 30%  
 BORROW 4301 CU. YDS.

NO.	STATION	DESCRIPTION	ELEV.
7	70+00	SPIKE IN 18\"/>	
8	78+00	SPIKE IN ELM STUMP	120' LT. 1443.91
9	89+00	SPIKE IN 8\"/>	

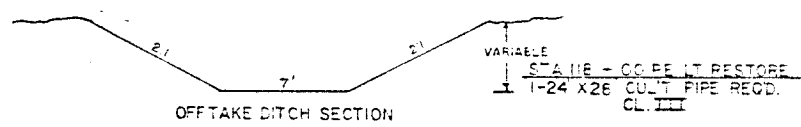
DATE: 1-28-88  
 BY: J.M.K.  
 CHECKED: G.C.  
 PLANNING  
 NOTE BOOK NO. 1316

DATE: 1-28-88  
 BY: J.M.K.  
 CHECKED: G.C.  
 PROFILE  
 NOTE BOOK NO. 1316

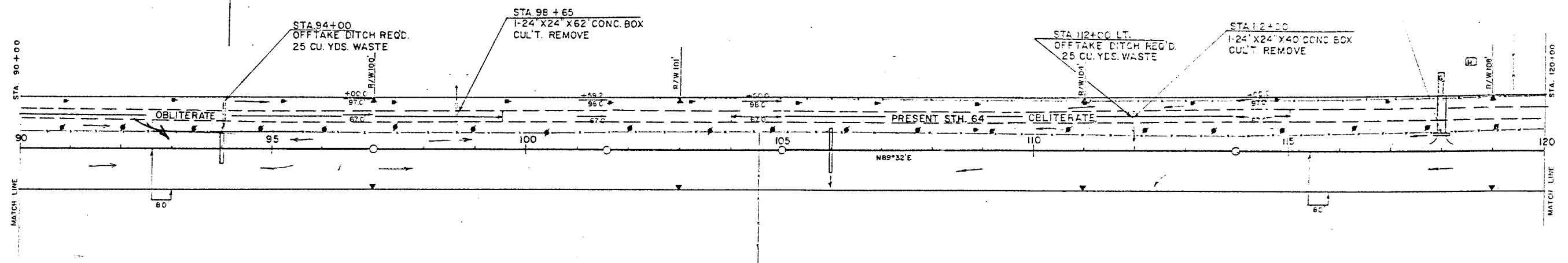




OBLITERATE OLD ROAD  
STA. 90+00-115+00=20.5 STA.



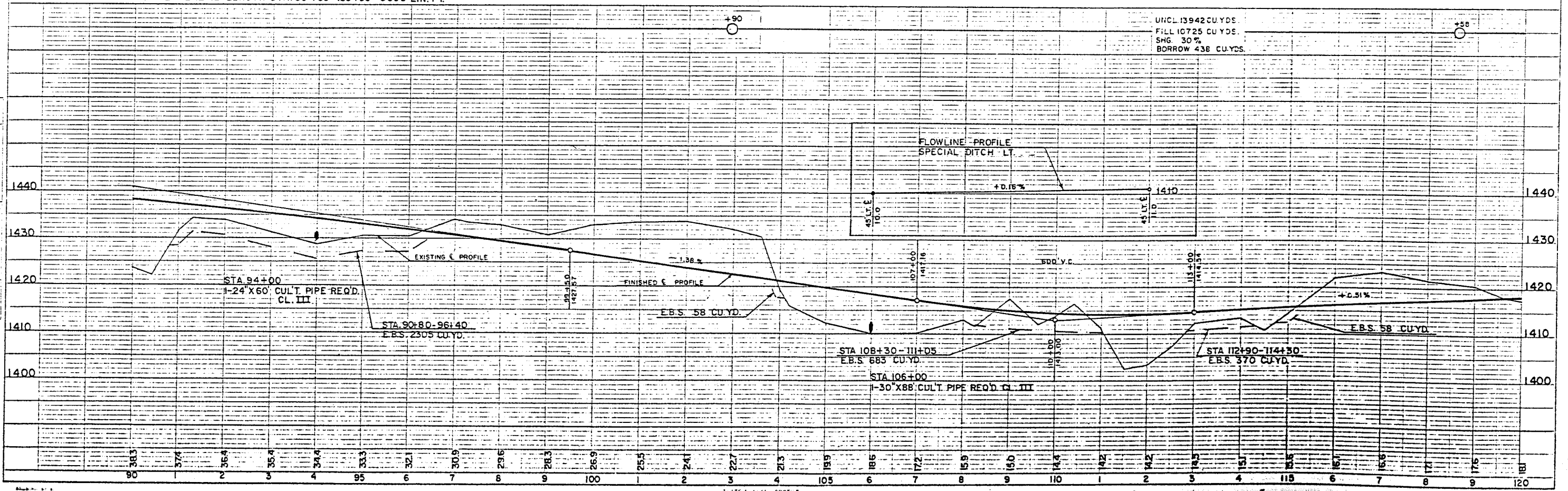
STA. 90+00-120+00  
6 R/W POSTS REQ'D.



BENCH MARKS

NO.	STATION	DESCRIPTION	ELEV.
10	96+52	SPIKE IN 8" TWIN ELM	1429.63
11	1106+90	SPIKE IN POWER POLE	1411.52
12	1116+65	SPIKE IN 5" TWIN ELM	1428.01

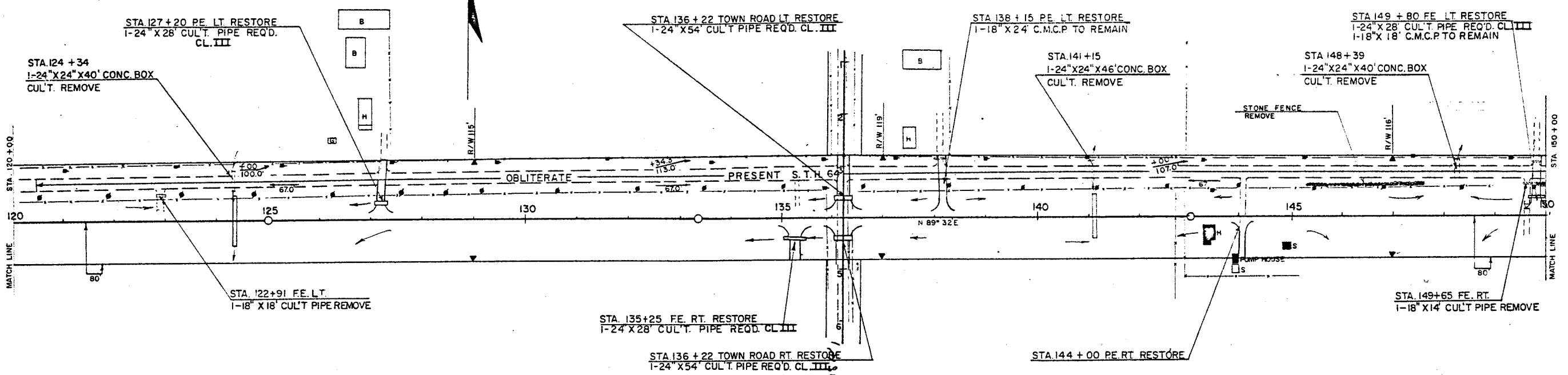
NET CENTERLINE LENGTH STA. 90+00-120+00=3000 LIN. FT.



PLAN & PROFILE STA. 90+00-120+00

STA. 120+00 - 150+00  
6 R/W POSTS REQ'D.

OBLITERATE OLD ROAD  
STA. 120+50 - 150+00 = 29.5 STA.

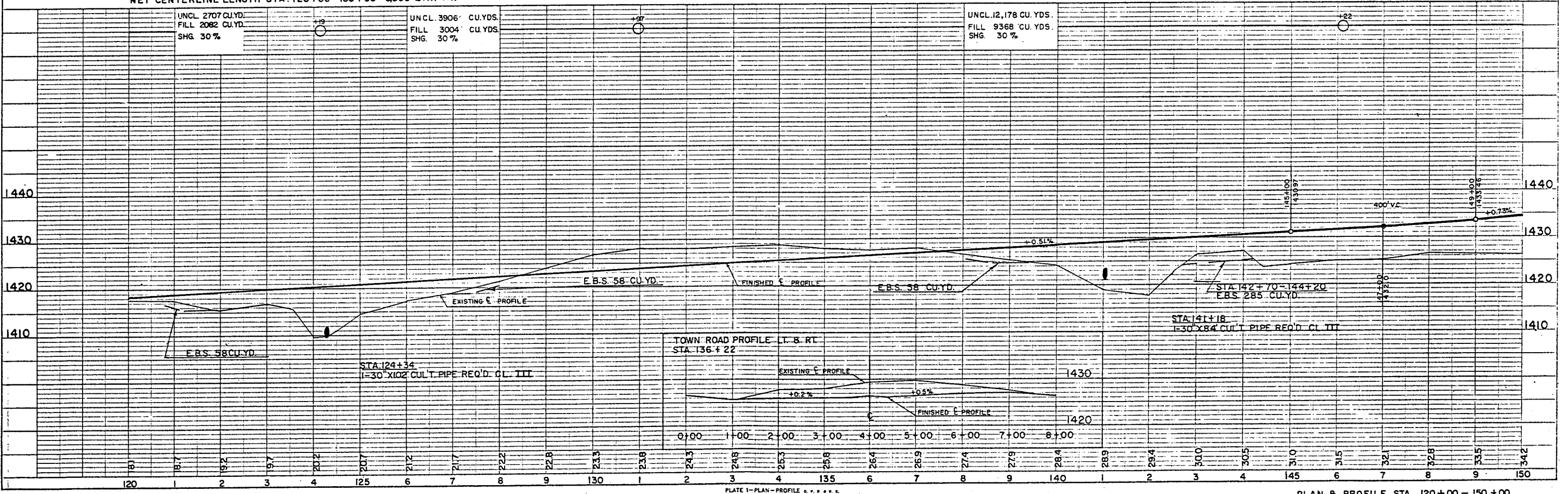


BENCH MARKS

NO.	STATION	DESCRIPTION	ELEV.
13	127+15	SPIKE IN 10" WHT. PINE	120' LT. 1420.12
14	135+85	SPIKE IN 6" TWIN ELM	125' LT. 1428.41
15	143+60	SPIKE IN 24" MAPLE	145' LT. 1426.74

NET CENTERLINE LENGTH STA. 120+00 - 150+00 = 3,000 LIN. FT.

UNCL. 2707 CU. YD.	UNCL. 3906 CU. YD.	UNCL. 12,178 CU. YD.
FILL 2082 CU. YD.	FILL 3004 CU. YD.	FILL 9368 CU. YD.
SHG. 30%	SHG. 30%	SHG. 30%

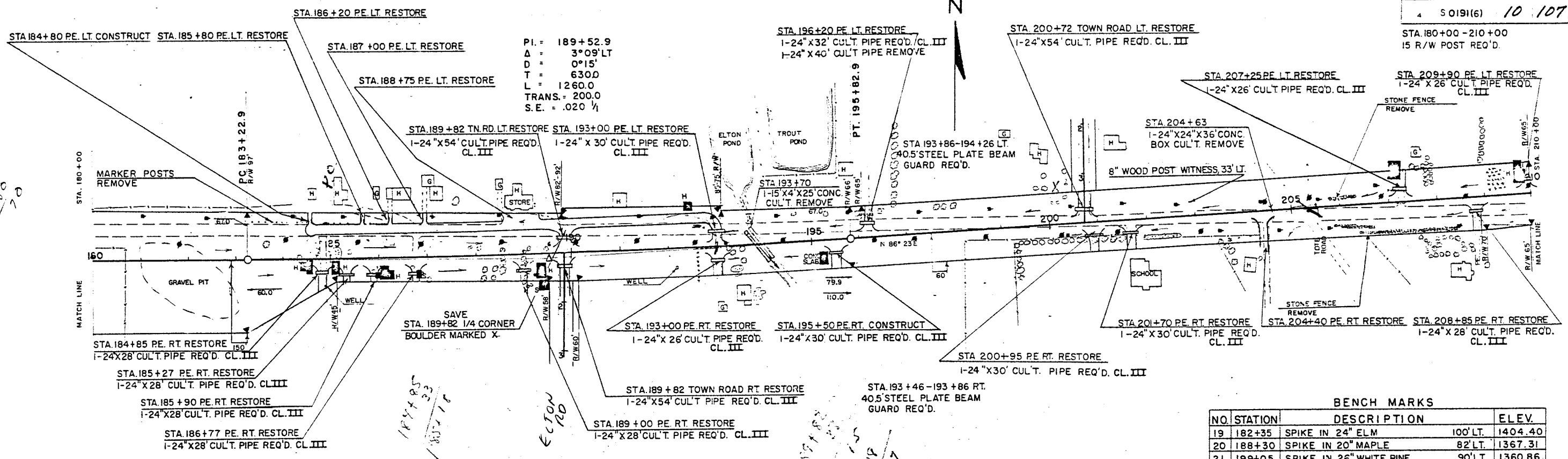


PLAN  
CHECKED BY: G.S. WILKINS  
DATE: 1/15/64  
NO. 204

PROFILE  
CHECKED BY: G.S. WILKINS  
DATE: 1/15/64  
NO. 204







PI = 189+52.9  
 Δ = 3°09'LT  
 D = 0°15'  
 T = 630.0  
 L = 1260.0  
 TRANS. = 200.0  
 S.E. = .020 1/4

BENCH MARKS

NO.	STATION	DESCRIPTION	ELEV.
19	182+35	SPIKE IN 24" ELM	100'LT. 1404.40
20	188+30	SPIKE IN 20" MAPLE	82'LT. 1367.31
21	199+05	SPIKE IN 26" WHITE PINE	90'LT. 1360.86
22	208+15	SPIKE IN 10" APPLE TREE	80'RT. 1371.69

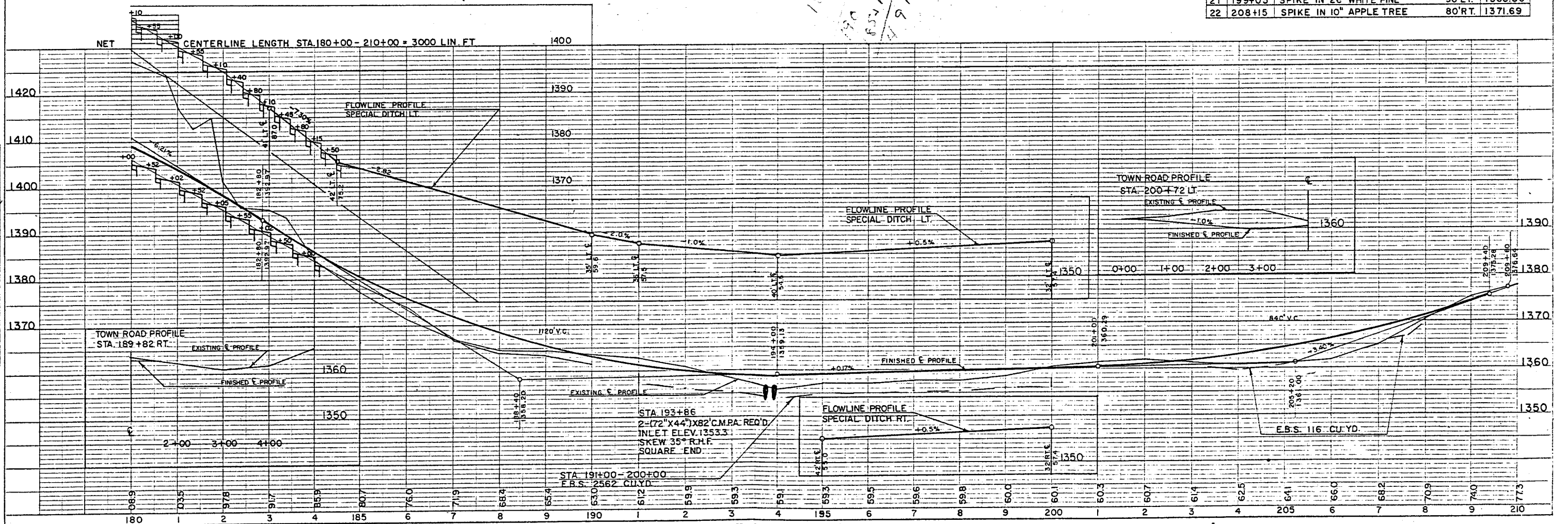


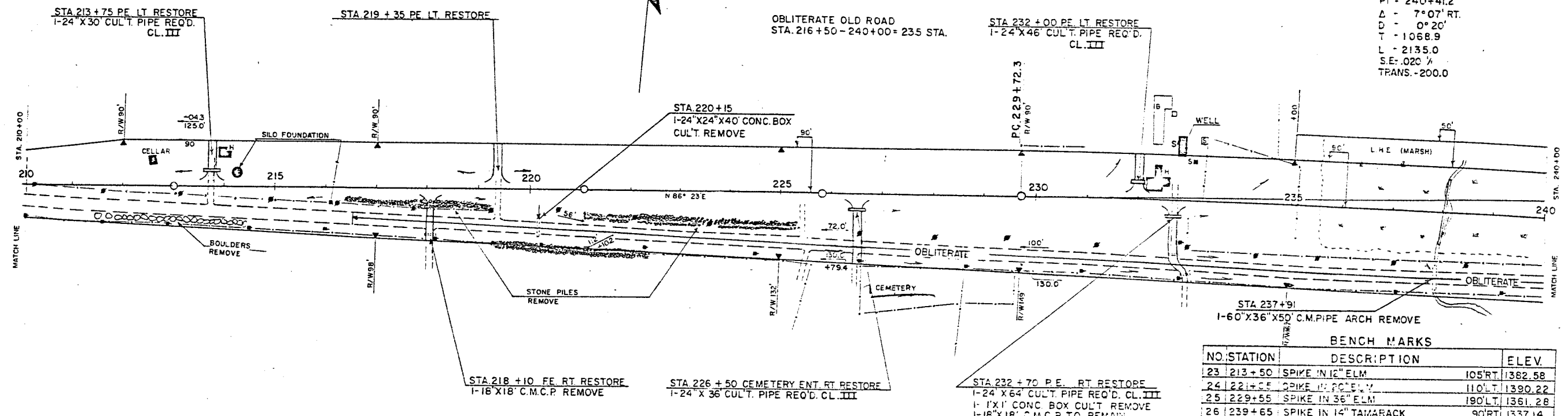
PLATE 1 - PLAN - PROFILE S. P. R. & P. E.  
 MADE AND PRINTED IN U.S.A.  
 CHARLES HENNING COMPANY, INC.

PLAN & PROFILE STA. 180+00-210+00

STA 232+00-240+00 RT. & LT.  
18 MARKER POSTS REQ'D.

STA 210+00-240+00  
9 R/W POST REQ'D.

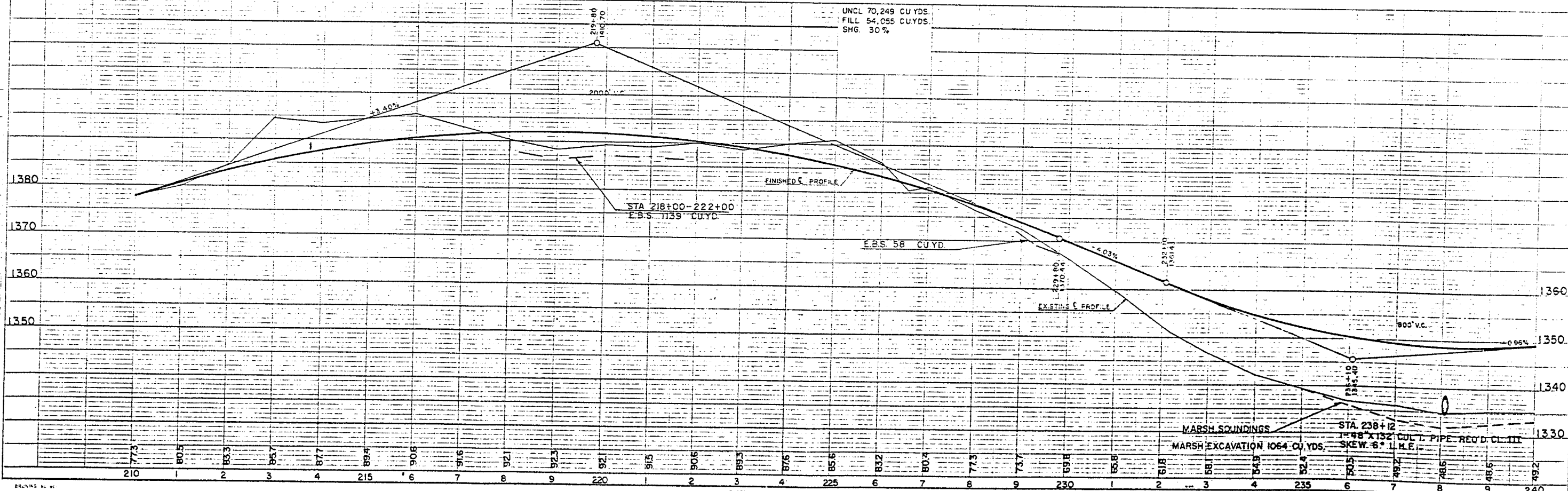
PI - 240+41.2  
Δ - 7°07' RT.  
D - 0°20'  
T - 1068.9  
L - 2135.0  
S.E. 0.20 %  
TRANS. -200.0



BENCH MARKS

NO.	STATION	DESCRIPTION	ELEV.
23	213+50	SPIKE IN 12" ELM	105' RT. 1382.58
24	221+55	SPIKE IN POLE	110' LT. 1390.22
25	229+55	SPIKE IN 36" ELM	190' LT. 1361.28
26	239+65	SPIKE IN 14" TAMARACK	90' RT. 1337.14

NET CENTERLINE LENGTH STA 210+00 - 240+00 = 3000 LIN. FT.

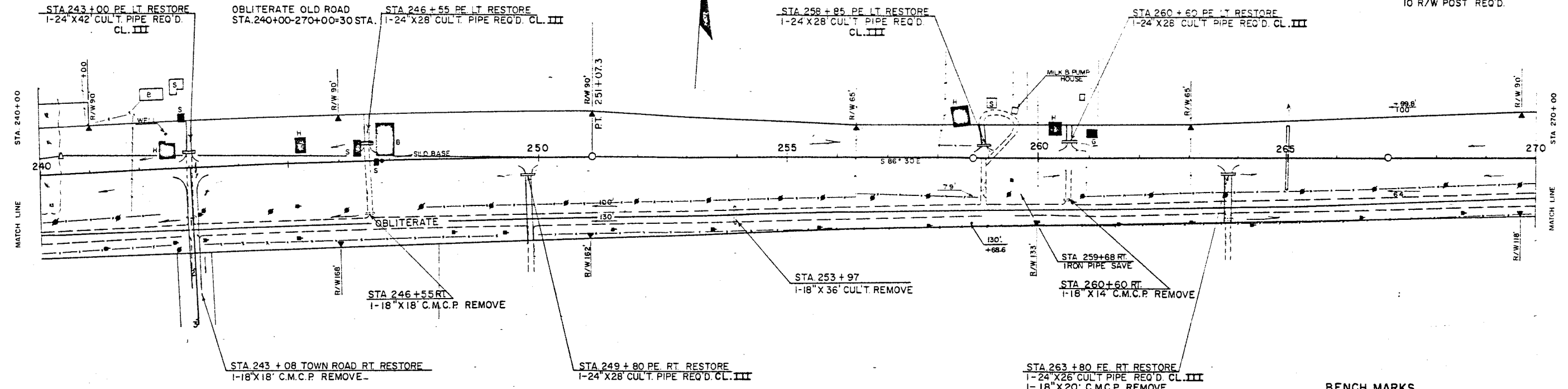




STA 241+00-244+00 RT & LT.  
8 MARKER POSTS REQ'D.

PROJECT	NO. SHEETS	TOTAL SHEETS
S 0191 (6)	12	107

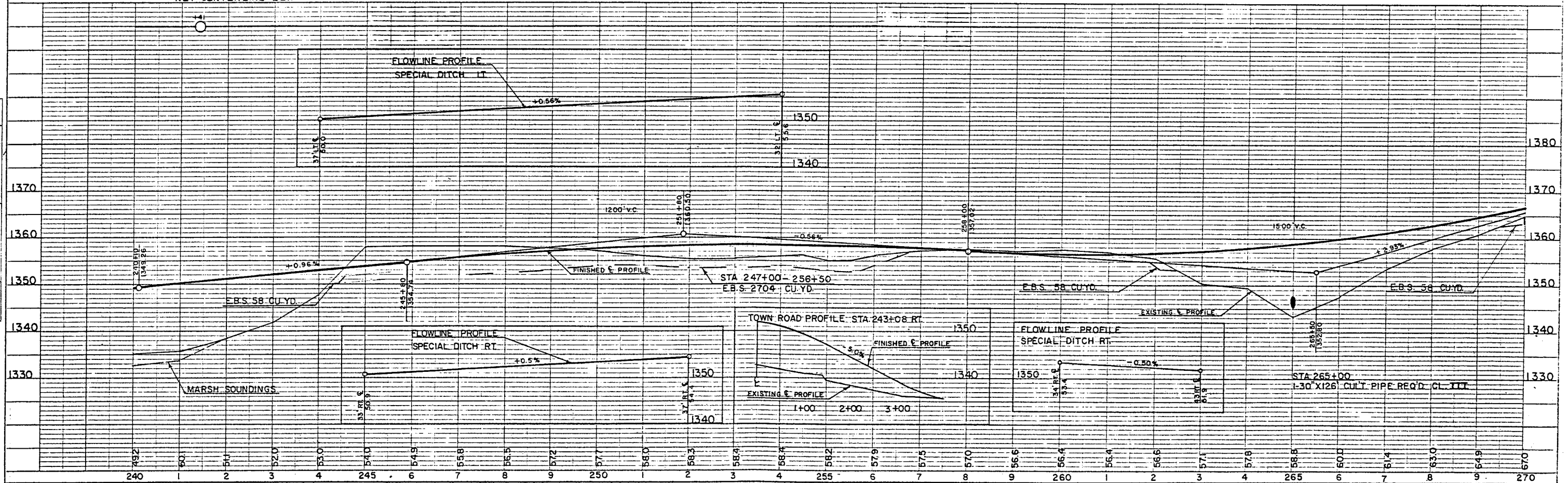
STA 240+00-270+00  
10 R/W POST REQ'D.



**BENCH MARKS**

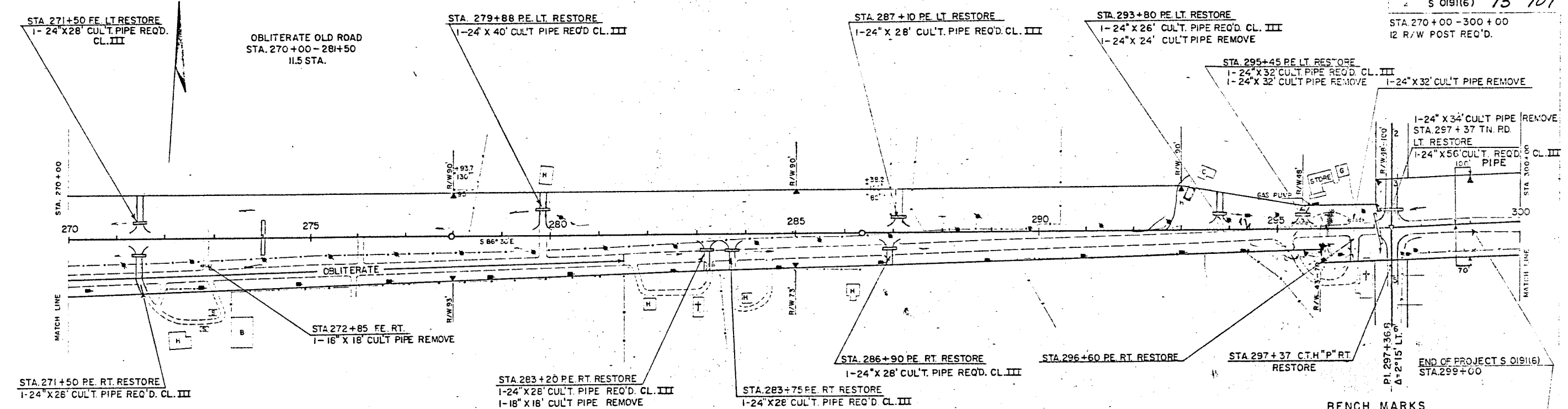
NO.	STATION	DESCRIPTION	ELEV.
27	248+40	SPIKE IN 22\"/>	

NET CENTERLINE LENGTH STA. 240+00 - 270+00 = 3000 LIN. FT.



NOTE: THIS DRAWING IS THE PROPERTY OF THE ENGINEER AND SHOULD NOT BE REPRODUCED OR COPIED IN ANY MANNER WITHOUT HIS WRITTEN CONSENT.

NOTE: THIS DRAWING IS THE PROPERTY OF THE ENGINEER AND SHOULD NOT BE REPRODUCED OR COPIED IN ANY MANNER WITHOUT HIS WRITTEN CONSENT.

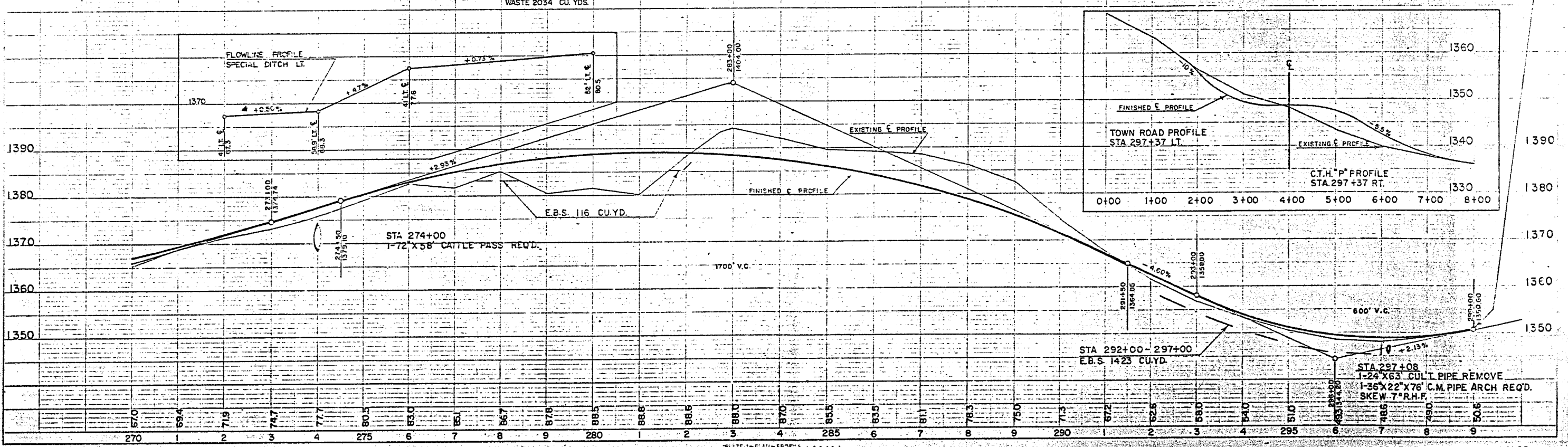


**BENCH MARKS**

NO	STATION	DESCRIPTION	ELEV.
30	277+10	SPIKE IN 24" MAPLE	210' RT. 1365.99
31	286+75	SPIKE IN 24" ELM	105' RT. 1386.32
32	298+40	SPIKE IN 12" MAPLE	50' LT. 1349.47

NET CENTERLINE LENGTH STA. 270+00-299+00= 2900 LIN. FT.  
 UNCL. 45,117 CU. YDS.  
 FILL 35,176 CU. YDS.  
 SHG. 30%  
 WASTE 2034 CU. YDS.

UNCL. 36,000 YDS.  
 FILL 2768 CU. YDS.  
 SHG. 30%



PLAN & PROFILE STA. 270+00-300+00