

HIGHWAY	SECTION	CLASS AND AGREEMENT	DIVISION OFFICE	NUMBER	SHEETS
34.2	188.0	21.6	WIS. 5N	1	39

STATE OF WISCONSIN
STATE HIGHWAY COMMISSION OF WISCONSIN

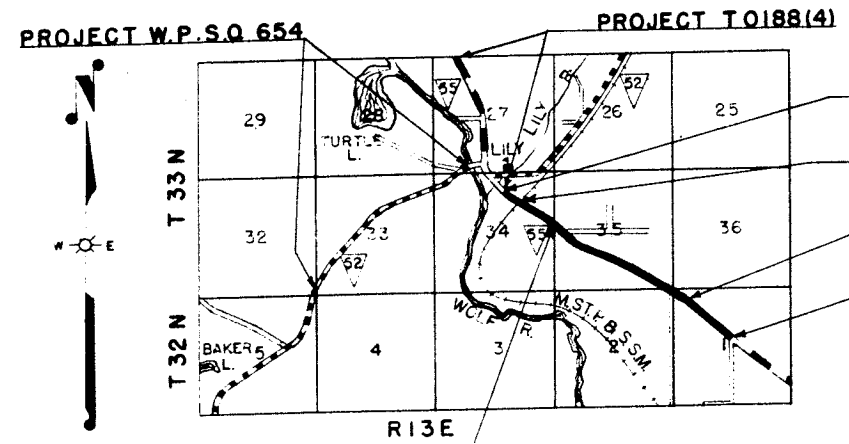
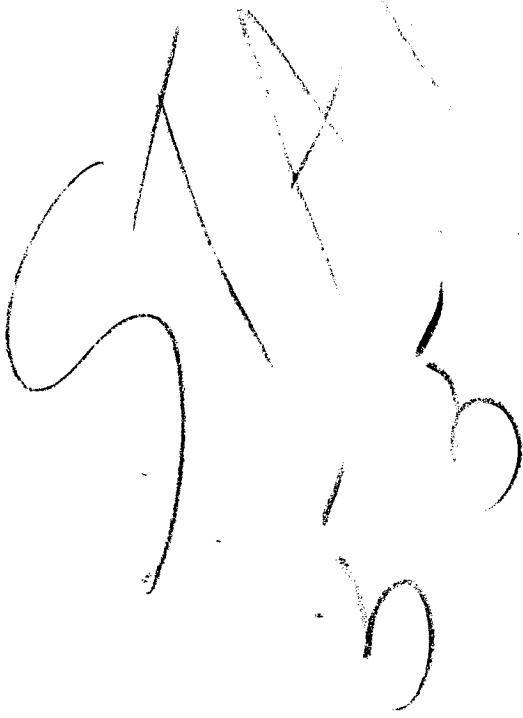
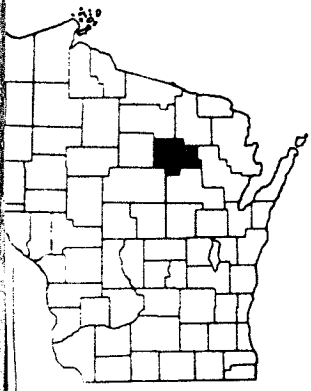
PLAN AND PROFILE OF PROPOSED
HOLLISTER - LILY ROAD
LANGLADE COUNTY
PROJECT T 0188(6)

BEGINNING AT A POINT 50 FEET SOUTH AND 170 FEET EAST OF THE CENTER OF SECTION 1, T32N, R13E AND EXTENDING NORTHWESTERLY TO A POINT 565 FEET SOUTH AND 425 FEET EAST OF THE SOUTH 1/4 CORNER OF SECTION 27, T33N, R 13 E.

PLAN 1 IN. = 100 FT.
PROFILE HOR. 1 IN. = 100 FT. VERT. 1 IN. = 10 FT.
CROSS SECTIONS HOR. 1 IN. = 5 FT. & 10 FT. VERT. = 5 FT. & 10 FT.

INDEX OF SHEETS

0.1	TITLE
0.2	TYPICAL CROSS SECTIONS
0.3	ESTIMATE OF QUANTITIES
0.3A	MISCELLANEOUS
1-4	RIGHT OF WAY LINES
5-8	PLAN AND PROFILE
9-15	STANDARD STRUCTURES
16-39	CROSS SECTIONS



STA 114+52.3 - END OF PROJECT T 0188(6) = STA 5+00 OF PROJECT T 0188(4)
STA 111+92.1 TO STA 112+05.4 & STA 112+15.2 TO STA 112+28.5 - EXCEPTION TO NET C LENGTH
STA 0A+00 BACK = STA 0+00 AHEAD
STA 21A+00 BEGINNING OF PROJECT

STA 87+30.6 BACK = STA 87+35.0 AHEAD

RECORD # 20161
LANGLADE COUNTY SURVEYORS OFFICE
DATE FILED: 6-16-98 BY: AKM

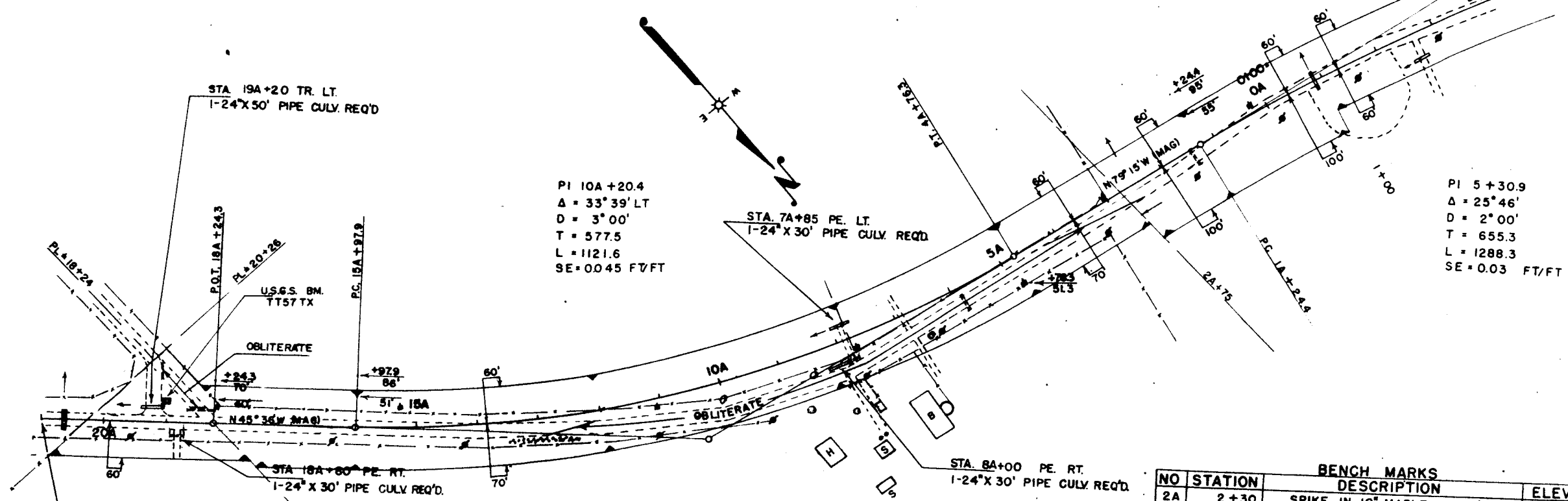
CONVENTIONAL SIGNS

PROPERTY LINE	CULVERTS IN PLACE
TOWNSHIP OR RANGE LINE	CULVERTS REQUIRED
SECTION LINE	DROP INLET
NEW RIGHT OF WAY LINE	POWER POLE
PRESENT RIGHT OF WAY LINE	TELEPHONE OR TELEGRAPH POLE
WIRE FENCE (WOVEN)	RIGHT OF WAY MARKERS
WIRE FENCE (BARBED)	REFERENCE STAKE FOR HUBS ONLY
LOT LINE	MARSH
CORPORATE OR CITY LIMITS	HEDGE
PROPERTY LINE	TREES
TRAIL OR WAY OR PE	GROUND ELEVATION	DATUM LINE 7516 73.9
RAILROADS	GRADE ELEVATION	DATUM LINE 7516 73.9
BASE OR SURVEY LINE		

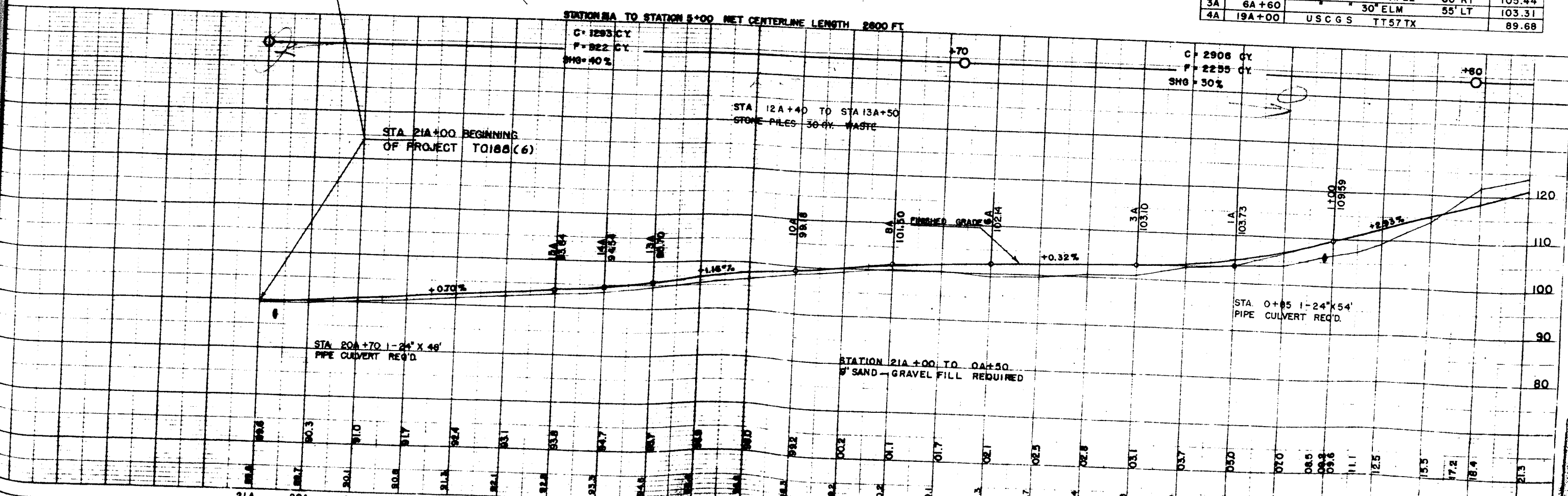
LAYOUT
SCALE 1 MILE
TOTAL NET LENGTH OF CENTERLINE = 2.561 MI

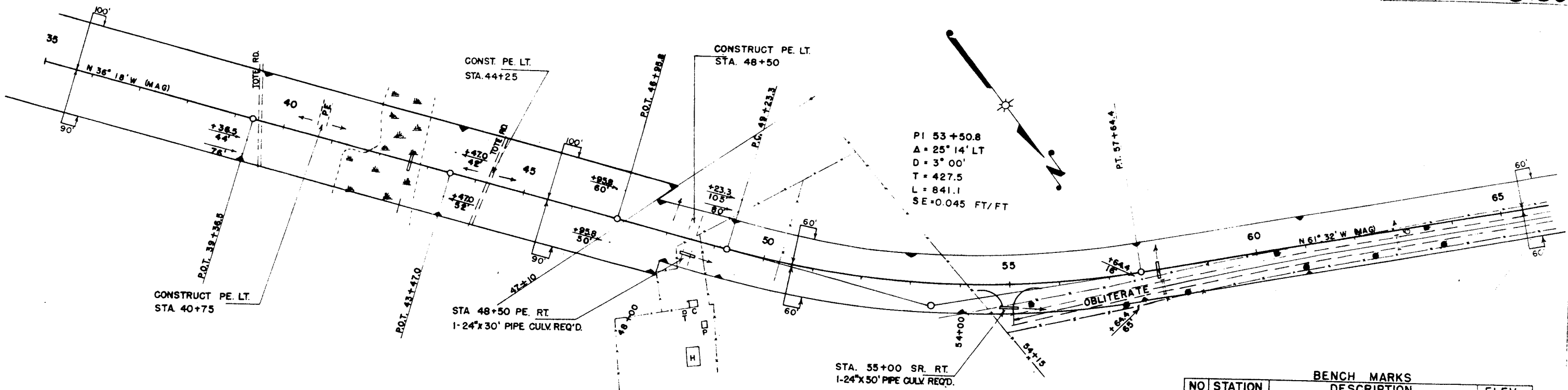
STATE HIGHWAY COMMISSION OF WISCONSIN MADISON, WIS.	FEDERAL WORKS AGENCY PUBLIC ROADS ADMINISTRATION
SURVEYOR M.B. BELTZ NOTE BOOK B168 DIVISION COMPUTER J.B. M.O. CHECKER DIVISION CHECKER L.M.P. CORRECT	RECOMMENDED FOR APPROVAL
CORRECT: DATE 3/9/51 <i>A.A. Kozjak</i> DIVISION ENGINEER	APPROVED: <i>A.A. Kozjak</i> PUBLIC ENGINEER PUBLIC ROADS ADMINISTRATION FEDERAL WORKS AGENCY
RECOMMENDED FOR APPROVAL DATE 3/15/51 <i>A.C. Clark</i> CONSTRUCTION ENGINEER	APPROVED: <i>A.C. Clark</i> COMMISSIONER PUBLIC ROADS ADMINISTRATION FEDERAL WORKS AGENCY
APPROVED: DATE 3/16/51 <i>E.C. Rostrom</i> STATE HIGHWAY ENGINEER	

NOTE: REMOVE ALL OLD CULVERTS WITHIN PROJECT LIMITS.

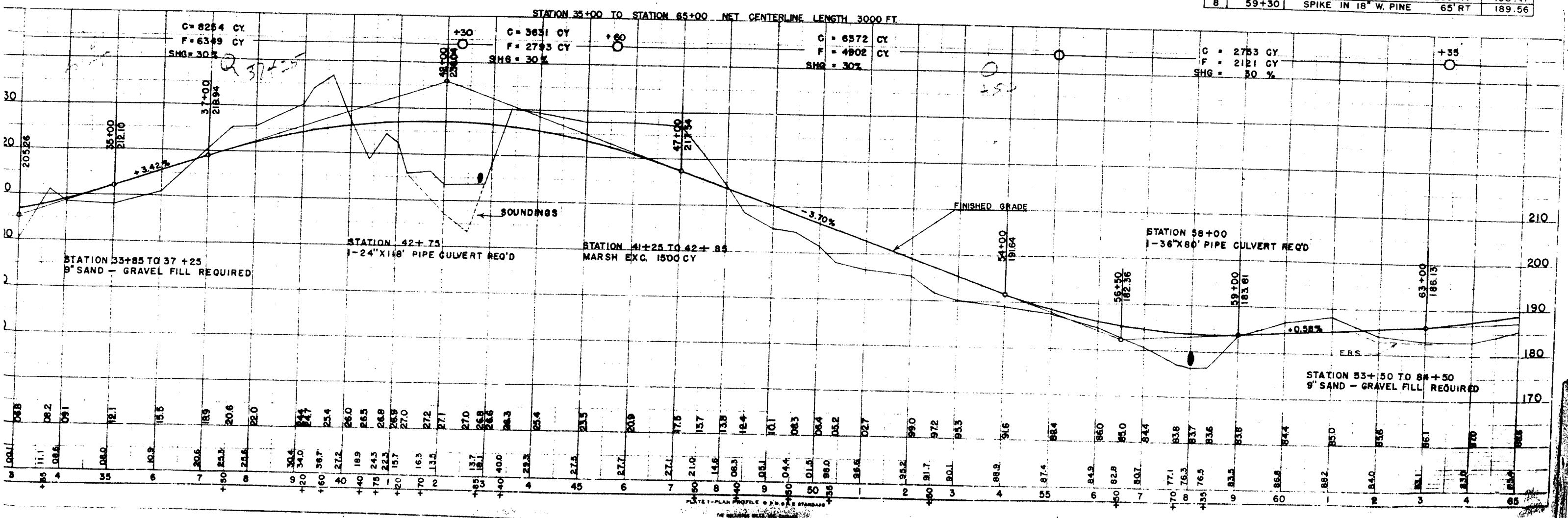


NO	STATION	DESCRIPTION	ELEV.
2A	2+30	SPIKE IN 10" MAPLE 60' RT	105.44
3A	6A+60	30" ELM 55' LT	103.31
4A	19A+00	USCGS TT57TX	89.68

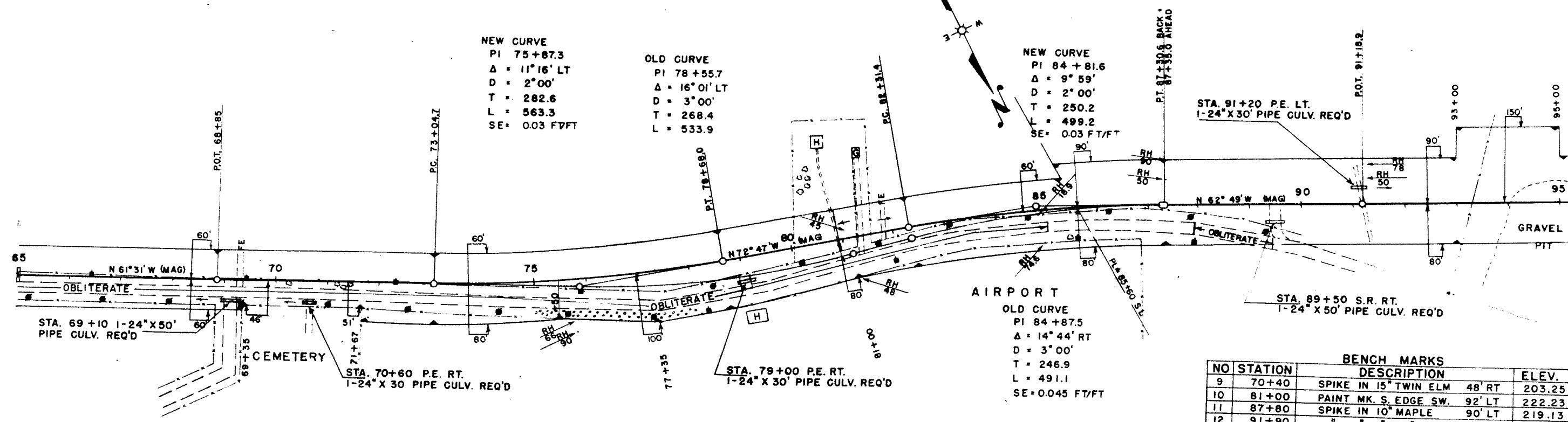




NO	STATION	DESCRIPTION	ELEV.
5	37+10	SPIKE IN 10" BASSWOOD 80' RT	218.31
6	43+00	" " 5" POPLAR 60' RT	216.45
7	50+50	SILO FOUNDATION 280' RT	198.47
8	59+30	SPIKE IN 18" W. PINE 65' RT	189.56

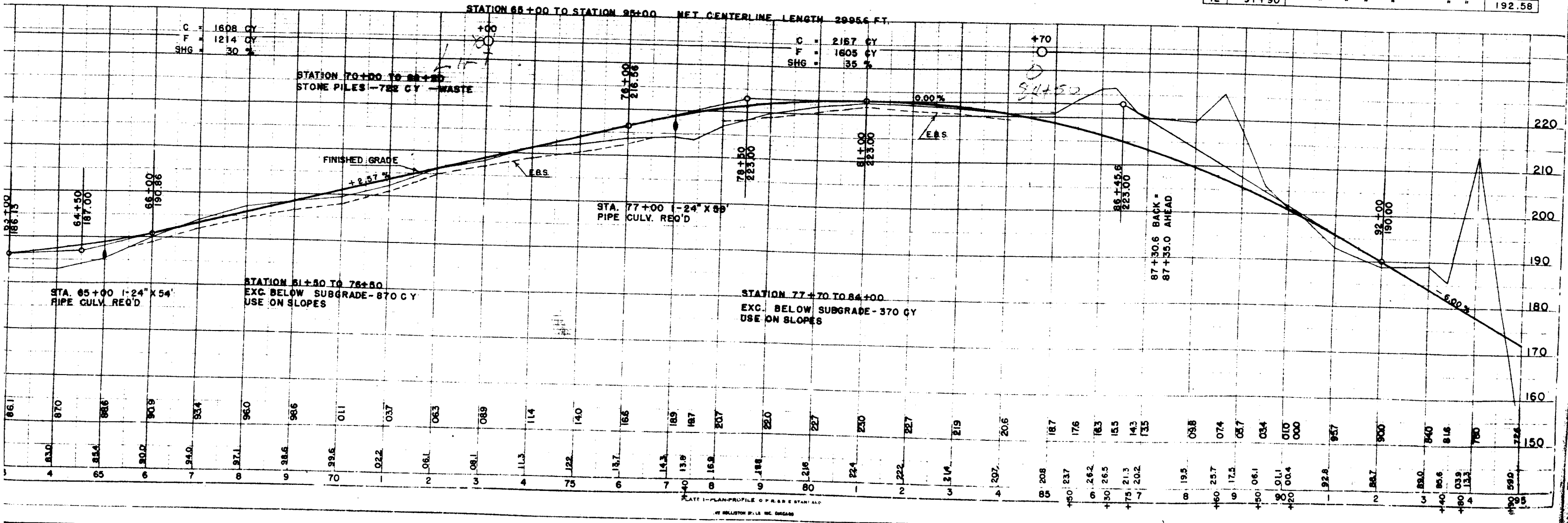


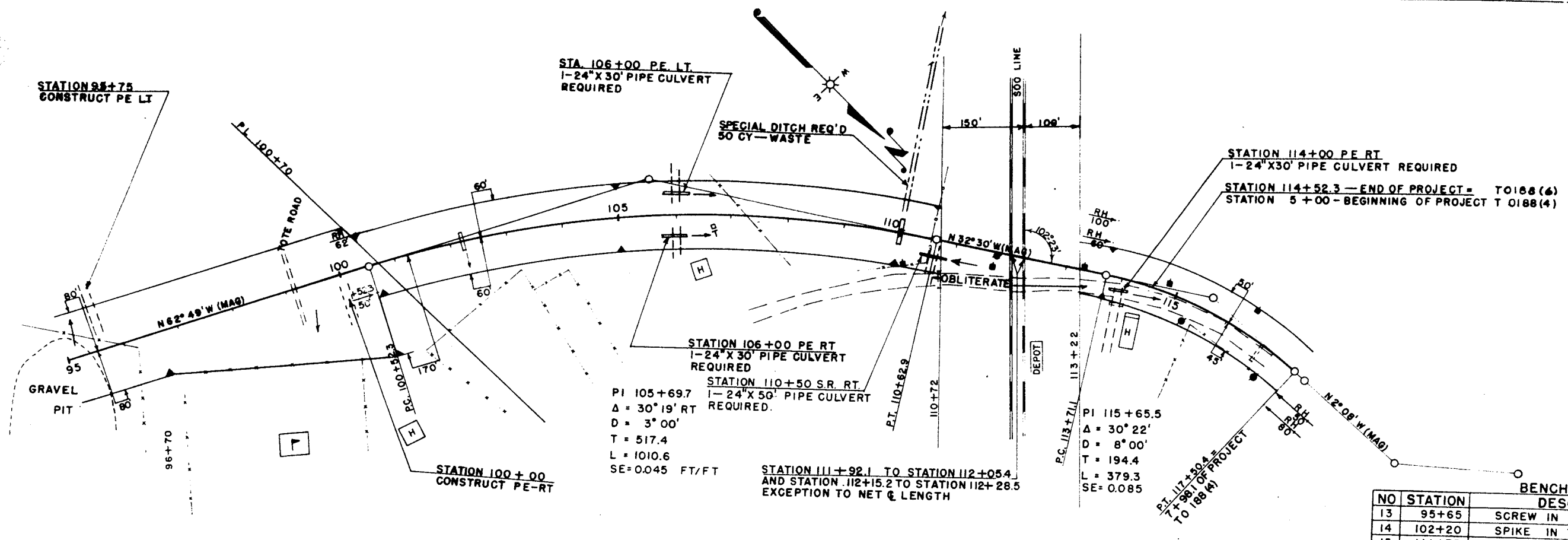
DATE: PLAN PROFILE & P.C. & E. STANDARD



BENCH MARKS

NO	STATION	DESCRIPTION	ELEV.
9	70+40	SPIKE IN 15" TWIN ELM 48' RT	203.25
10	81+00	PAINT MK. S. EDGE SW. 92' LT	222.23
11	87+80	SPIKE IN 10" MAPLE 90' LT	219.13
12	91+90	" " " " " "	192.58





BENCH MARKS

NO	STATION	DESCRIPTION	ELEV.
13	95+65	SCREW IN 15' ELM 60' RT	166.01
14	102+20	SPIKE IN TWIN ELM 60' LT	127.65
15	111+75	RR. SPIKE IN POWER POLE 175' RT	105.42
16		STD. OIL SIGN AT BRIDGE	99.86

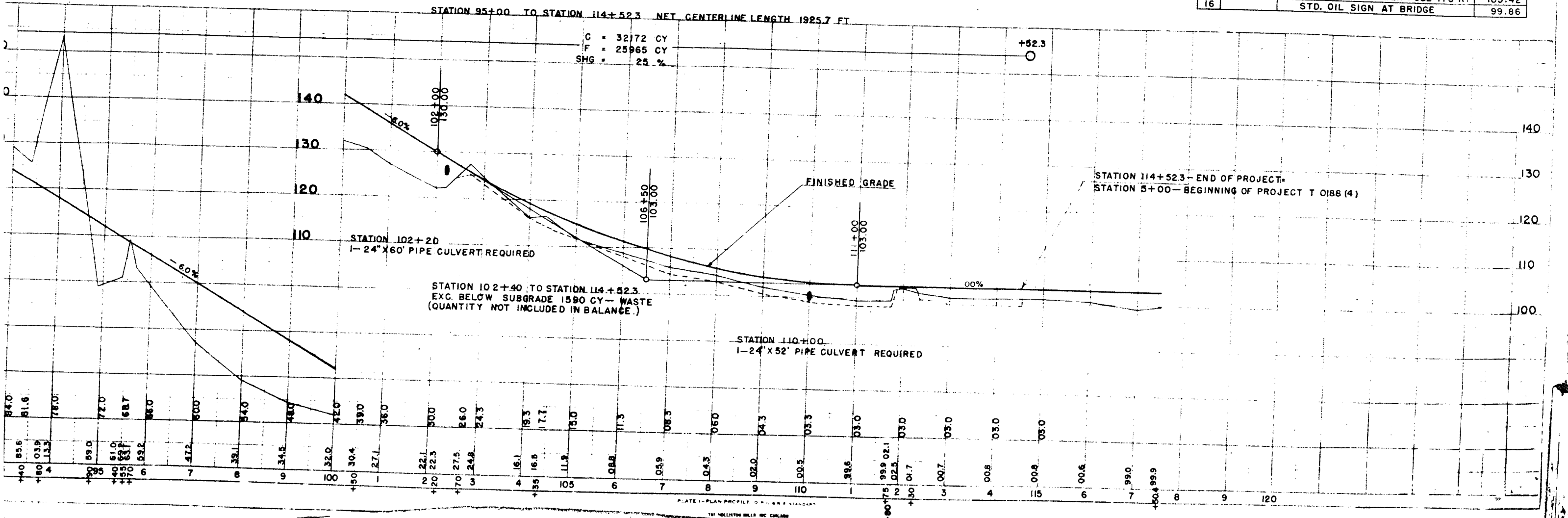


PLATE 1 - PLAN PROFILE OF ROAD STANDARD

THE HOLLISTON HILLS INC CHICAGO