

MAP OF SURVEY

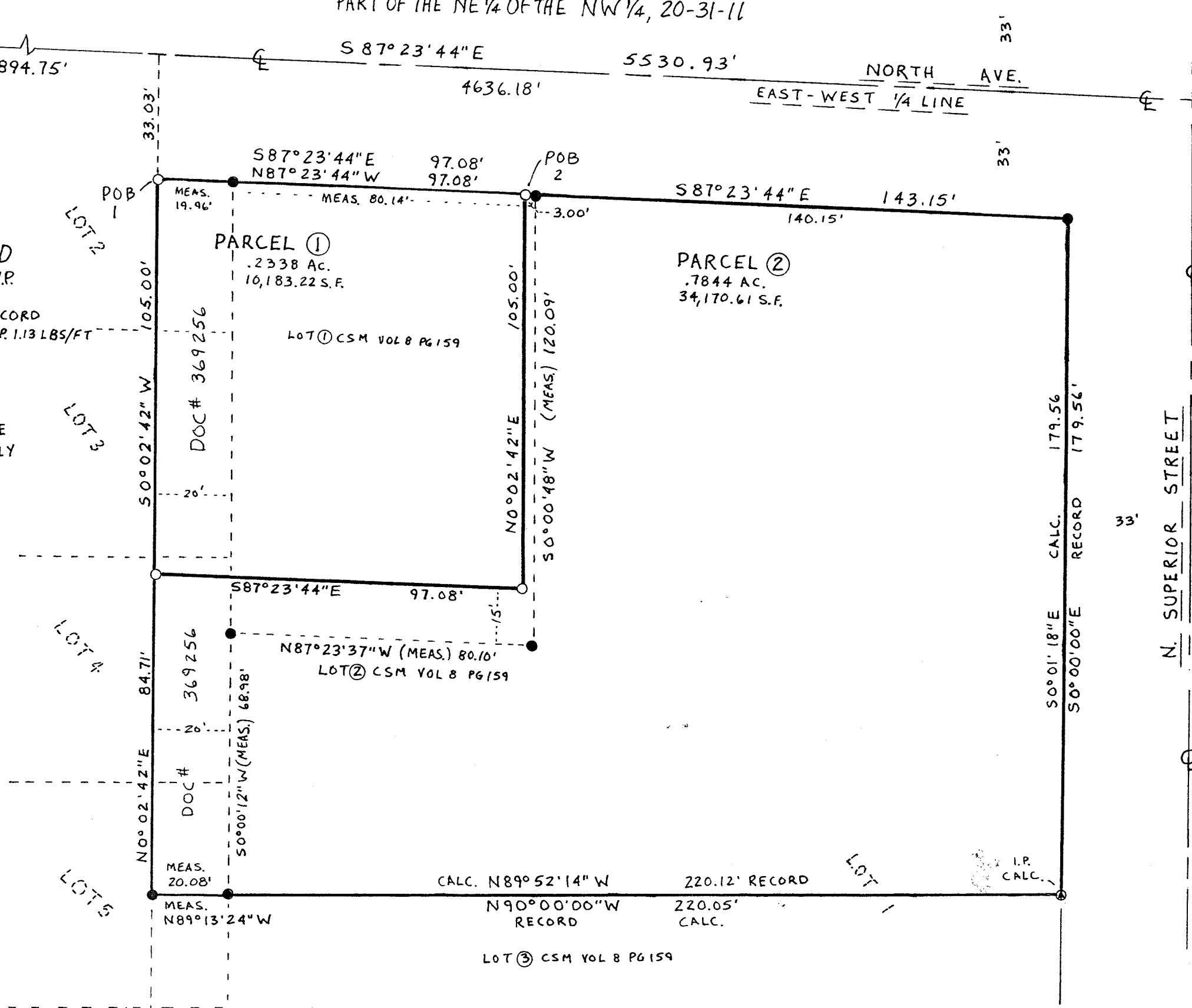
PART OF THE NE 1/4 OF THE NW 1/4, 20-31-11

PART OF LOTS 1, 2, 3, 4 & 5, BLOCK
2 OF DASKAMS 2nd ADDITION
CITY OF ANTIGO
LANGLADE COUNTY, WISCONSIN

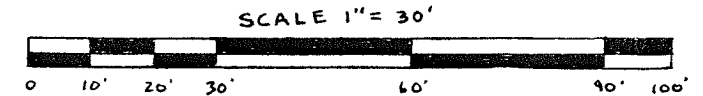
- LEGEND**
- ⊕ - FOUND 1.5" B.C. I.P.
 - ⊙ - FOUND 3/4" I.R.
 - - FOUND I.P. OF RECORD
 - - SET 1.05" x 18" I.P. 1.13 LBS/FT

ANTIGO BIBLE
TRUTH ASSEMBLY

**TIMBER WOLF
LAND SURVEYING**
DEAN WILLIAMS RLS-2468
715-275-4322



BEARINGS REFERENCED
TO THE EAST-WEST 1/4
LINE ASSUMED TO BEAR:
S 87° 23' 44" E



TIMBER WOLF LAND SURVEYING
DEAN A. WILLIAMS RLS-2468
WILLIAM F. KELLY
10/06/2003 | MAP# 2003-9

RECORD # 20175
LANGLADE COUNTY SURVEYORS OFFICE
DATE FILED: 2/2/04 BY: D. TELUSTY