

EETS

S.T.A.

CROSS SECTIONS
 STATE OF QUANTITIES
 MISCELLANEOUS QUANTITIES
 RIGHT OF WAY PLAT
 PLAN AND PROFILE STA. 90+00 TO STA. 285 A+00
 STANDARD DETAILS
 DRAINAGE STRUCTURES
 CROSS SECTIONS

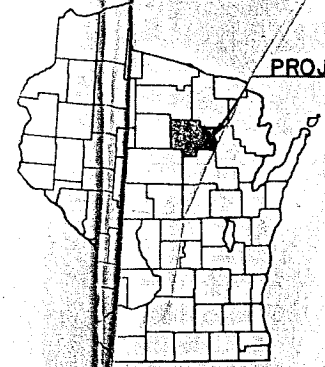
STATE OF WISCONSIN
 STATE HIGHWAY COMMISSION OF WISCONSIN

COUNTY AND HIGHWAY	ROUTE AND SECTION	CLASS & AGREEMENT		FEDERAL DIVISION OFFICE
		STATE	FEDERAL	
4.2	188.0	21.		5N

PLAN AND PROFILE OF PROPOSED
MARKTON-LANGLADE ROAD
 LANGLADE COUNTY
 PROJECT T 0188(1)

BEGINNING AT A POINT 1150 FEET NORTH AND 1630 FEET WEST OF THE SOUTHEAST CORNER OF SECTION 24, T31N, R14E AND EXTENDING NORTHWESTERLY TO A POINT 173.7 FEET WEST OF THE NORTH QUARTER COR. SEC. 10, T31N, R14E.

PLAN 1 IN. = 100 FT.
 PROFILE HOR. 1 IN. = 100 FT. VERT. 1 IN. = 10 FT.
 CROSS SECTIONS HOR. 1 IN. = 5 FT. VERT. 1 IN. = 5 FT.



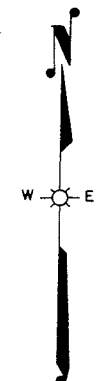
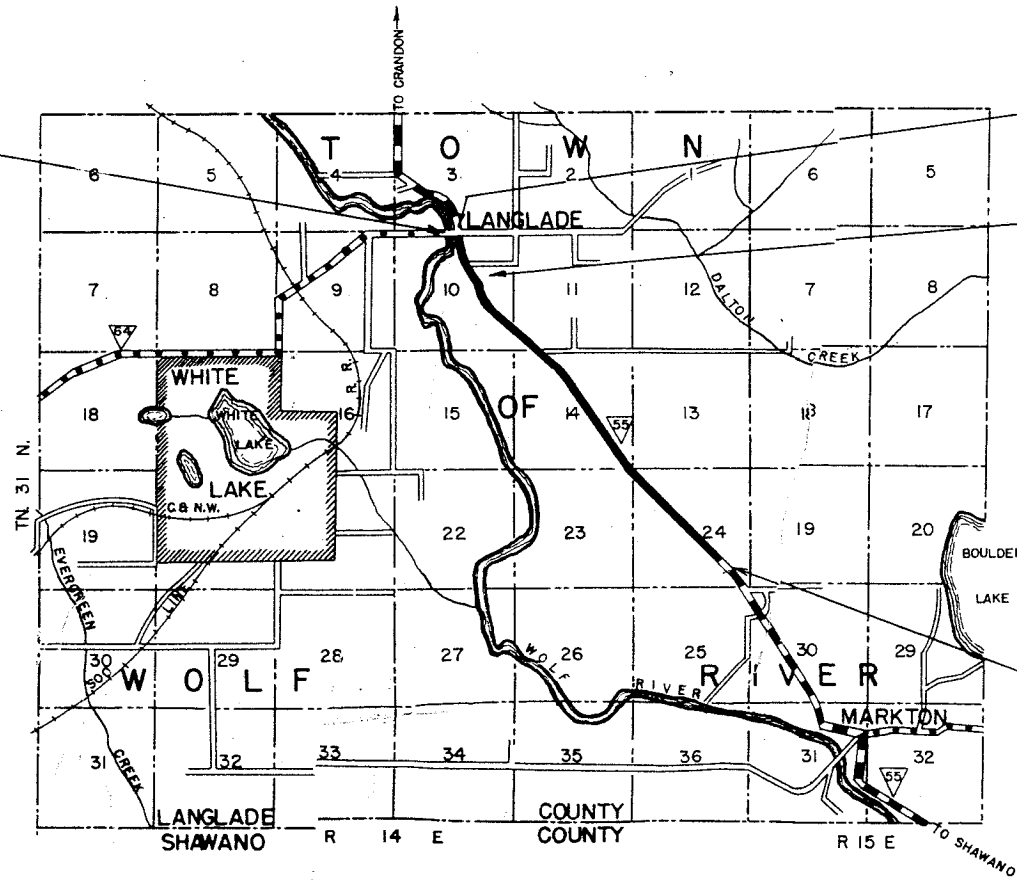
PROJ. T 0188(1)

STATION
 55

STA. 193+60 BEG. PROJ. S 0191(3)
 END PROJ. T 0191(3)

STA. 285 A+00 PROJ. T 0188(1) =
 STA. 195+09.3 PROJ. S 0191(3)

EQUATION: STA. 266+35 = STA. 266 A+35



RECORD # 20176
 LANGLADE COUNTY SURVEYORS OFFICE
 DATE FILED: 3/24/09 BY: D.T.

STA. 90+00
 BEG. PROJ. T 0188(1)

CONVENTIONAL SIGNS

STATE LINE	-----	CULVERTS IN PLACE	-----
COUNTY LINE	-----	CULVERTS REQUIRED	-----
TOWNSHIP OR RANGE LINE	-----	DROP INLET	-----
SECTION LINE	-----	POWER POLE	-----
NEW RIGHT OF WAY LINE	-----	TELEPHONE OR TELEGRAPH POLE	-----
PRESENT RIGHT OF WAY LINE	-----	RIGHT OF WAY MARKERS	-----
WIRE FENCE WOVEN	-----	REFERENCE STAKE FOR HUBS ONLY	-----
WIRE FENCE BARBED	-----	MARSH	-----
LOT LINE	-----	HEDGE	-----
CORPORATE OR CITY LIMITS	-----	TREES	-----
PROPERTY LINE	-----	GROUND ELEVATION	DATUM LINE 73.9
TRAVELED WAY OR P.E.	-----	GRADE ELEVATION	DATUM LINE 75.6
RAILROADS	-----		
PIPE OR SURVEY LINE	-----		

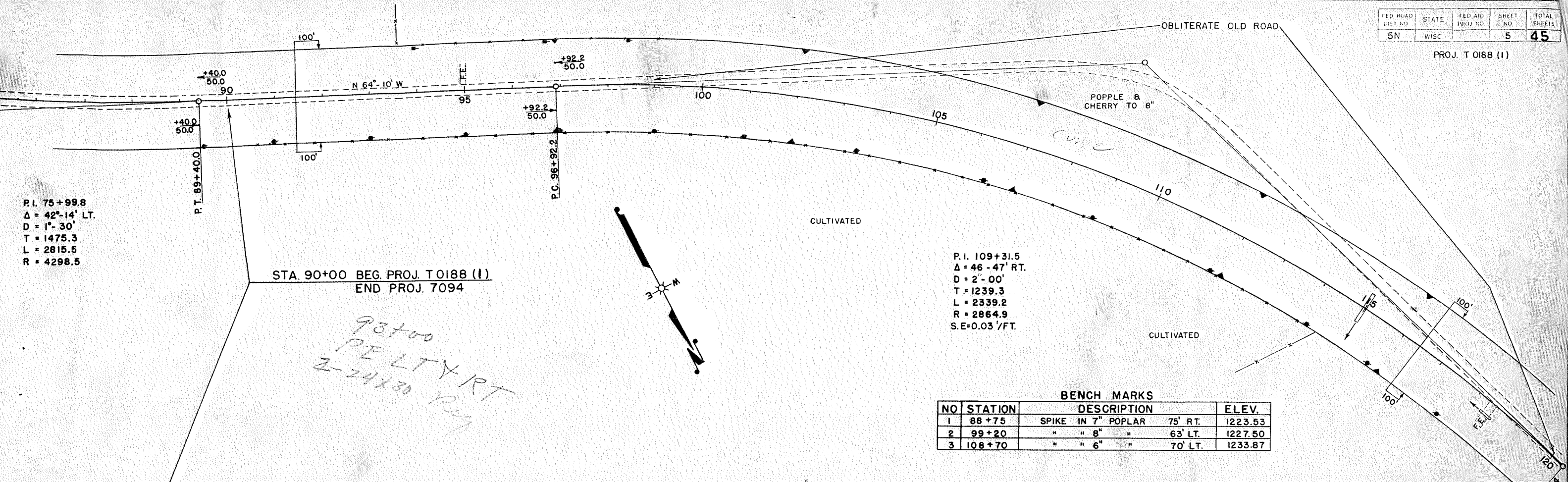
LAYOUT

SCALE 0 1 MILE

TOTAL NET LENGTH OF CENTERLINE = 3.493 MI.

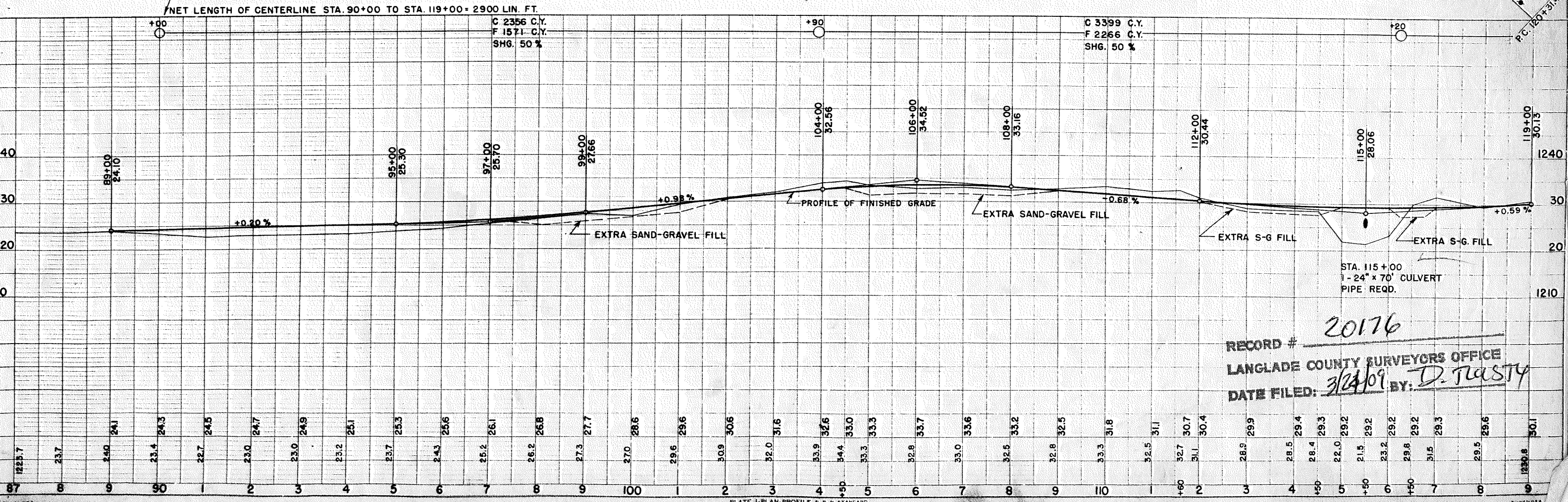
STATE HIGHWAY COMMISSION OF WISCONSIN MADISON, WIS.	FEDERAL WORKS AGENCY PUBLIC ROADS ADMINISTRATION
SURVEYOR L.M.P. NOTE BOOK 8158-8159 DIVISION COMPUTER M.O. CHECKER DIVISION CHECKER CORRECT	RECOMMENDED FOR APPROVAL: DISTRICT ENGINEER PUBLIC ROADS ADMINISTRATION FEDERAL WORKS AGENCY
CORRECT: DATE 3/24/09 RECOMMENDED FOR APPROVAL: DATE 4/17/09 DESIGN ENGINEER CONSTRUCTION ENGINEER	APPROVED: COMMISSIONER PUBLIC ROADS ADMINISTRATION FEDERAL WORKS AGENCY
APPROVED: STATE HIGHWAY ENGINEER	

FIELD INVESTIGATED BY:

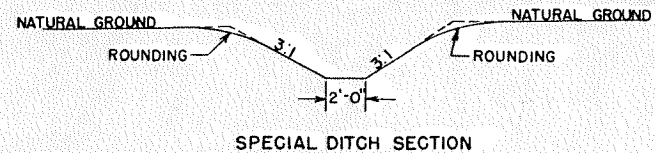


BENCH MARKS

NO	STATION	DESCRIPTION	ELEV.
1	88+75	SPIKE IN 7" POPLAR 75' RT.	1223.53
2	99+20	" " 8" " 63' LT.	1227.50
3	108+70	" " 6" " 70' LT.	1233.87



RECORD # 20176
 LANGLADE COUNTY SURVEYORS OFFICE
 DATE FILED: 3/24/09 BY: D. TRASTY

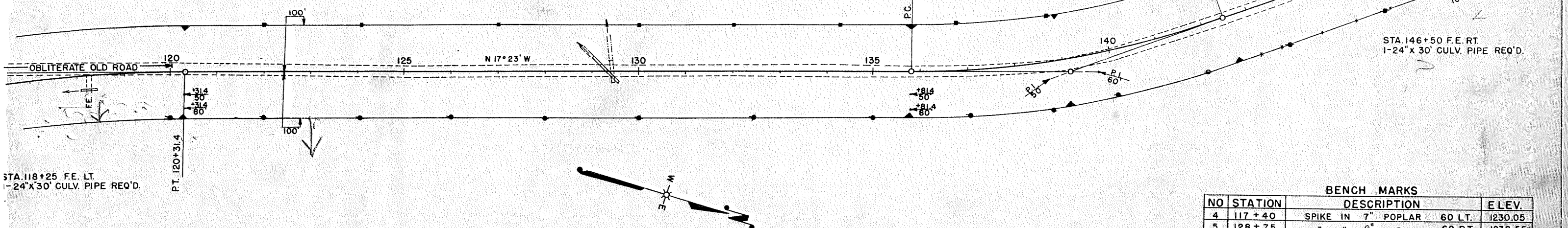


STA. 129+25 SPECIAL DITCH REQ'D
10 C.Y. WASTE.

P.I. 139+22.5
Δ 20° 15' LT.
D 3° 00'
T 341.1'
L 675.0'
R 1910.1'
S.E. 0.045'/FT.

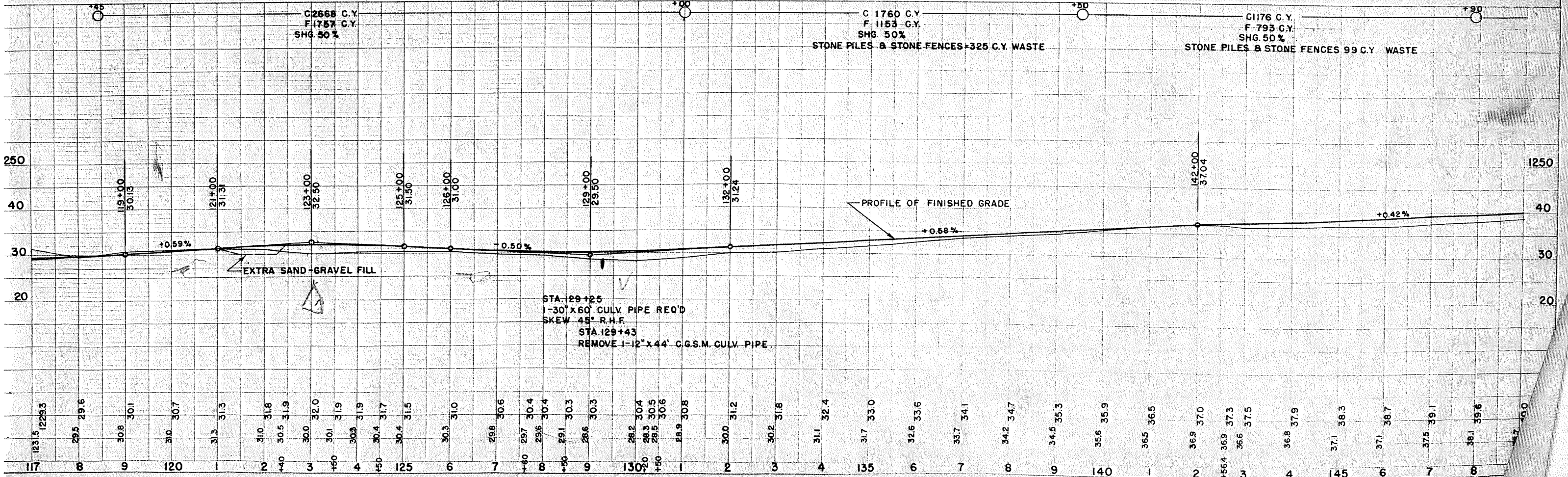
STA. 146+50 F.E. RT.
1-24" X 30' CULVERT PIPE REQ'D

STA. 146+50 F.E. RT.
1-24" X 30' CULV. PIPE REQ'D.



BENCH MARKS				
NO	STATION	DESCRIPTION		ELEV.
4	117+40	SPIKE IN 7" POPLAR	60 LT.	1230.05
5	128+75	" " 6" "	60 RT.	1232.55
6	138+40	" " 7" "	70 RT.	1236.73

NET LENGTH OF CENTERLINE STA. 119+00 TO STA. 149+00 = 3000 LIN. FT.



STA. 129+25
1-30" X 60' CULV. PIPE REQ'D
SKEW 45° R.H.F.
STA. 129+43
REMOVE 1-12" X 44' C.G.S.M. CULV. PIPE.

PI. 174+97.0
 Δ 6° 02' LT
 D 1° 00'
 T 301.9'
 L 603.3'
 R 5729.7'
 S.E. 0.03 / FT

STA. 155+00 P.E. LT.
 1-24" x 30' CULV. PIPE REQ'D

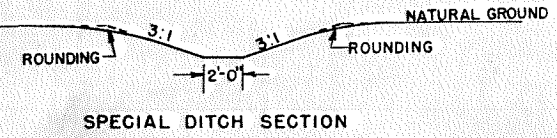
STA. 164+00
 SPECIAL DITCH REQ'D
 60 C.Y. WASTE

PI. 162+00.0
 Δ 5° 11' RT.
 D 1° 00'
 T 259.3'
 L 518.3'
 R 5729.7'
 S.E. 0.03 FT/FT.

STA. 172+90 P.E. RT.
 1-24" x 30' CULV. PIPE REQ'D.

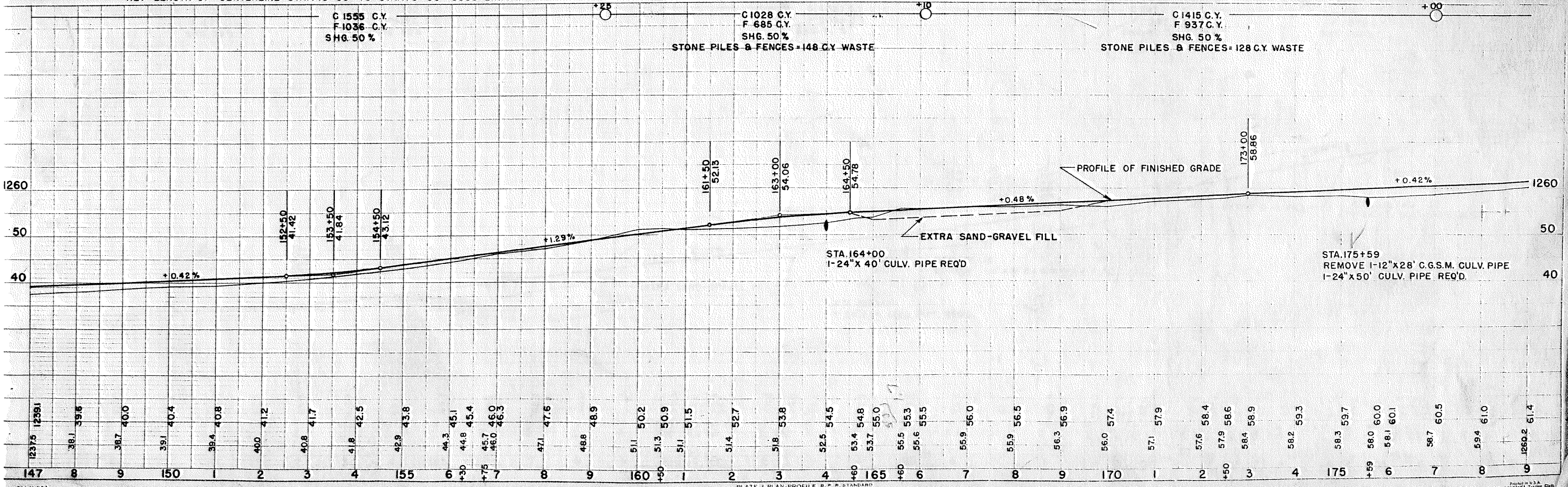
STA. 175+59
 SPECIAL DITCH REQ'D.
 20 C.Y. WASTE.

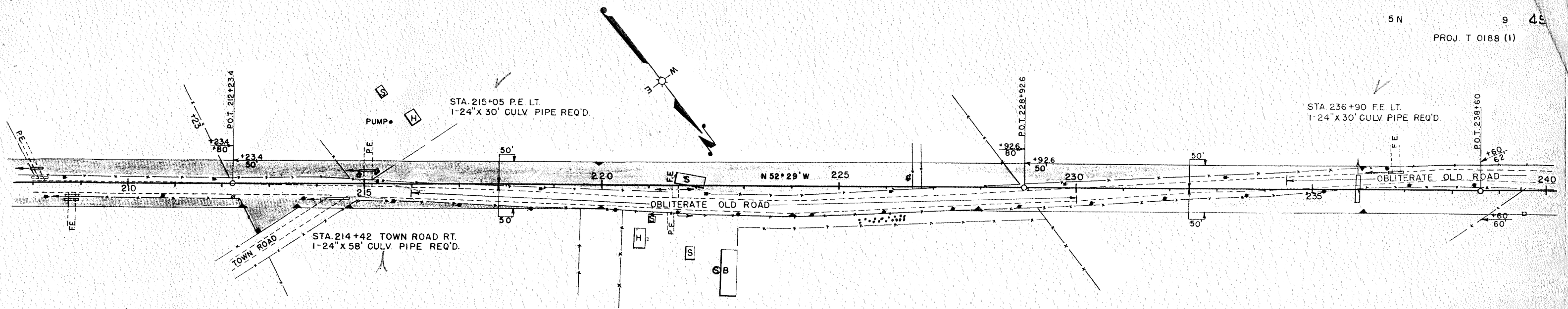
STA. 179+05 F.E. RT.
 1-24" x 30' CULV. PIPE REQ'D.



BENCH MARKS				
NO	STATION	DESCRIPTION		ELEV.
7	153+42	U.S.G.S. B.M. B-30	30' RT.	1240.83
8	165+60	SPIKE IN ROOT TWIN OAKS	70LT.	1258.25
9	171+35	SPIKE IN TWIN OAKS	40' RT.	1258.22

NET LENGTH OF CENTERLINE STA. 149+00 TO STA. 179+00 = 3000 LIN. FT.

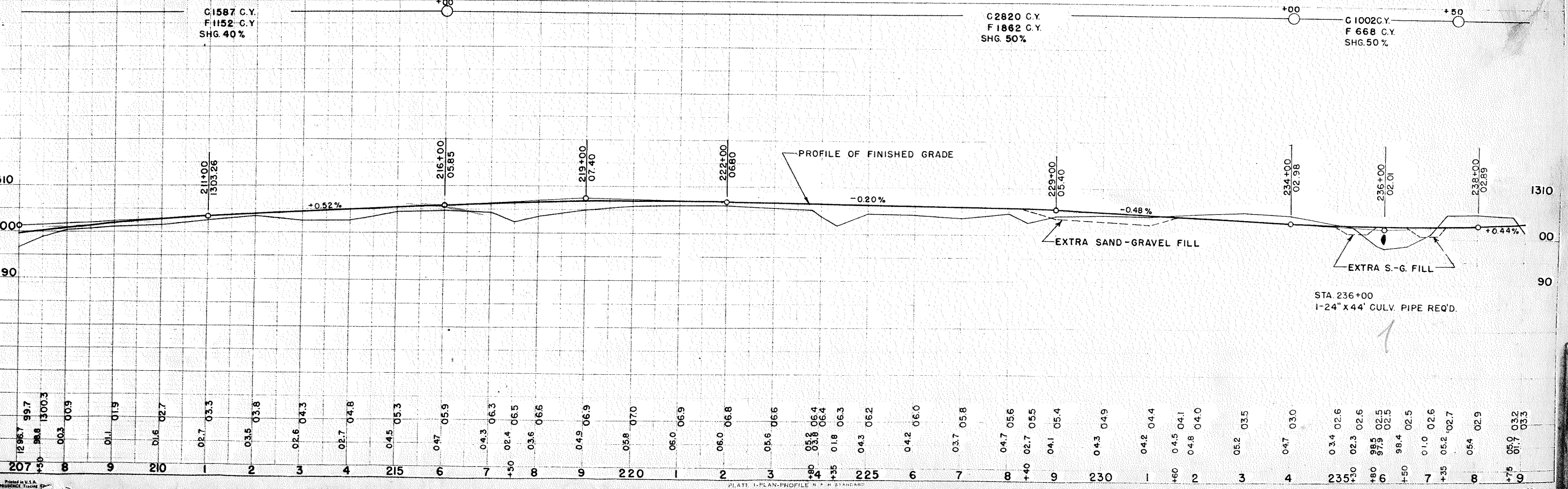


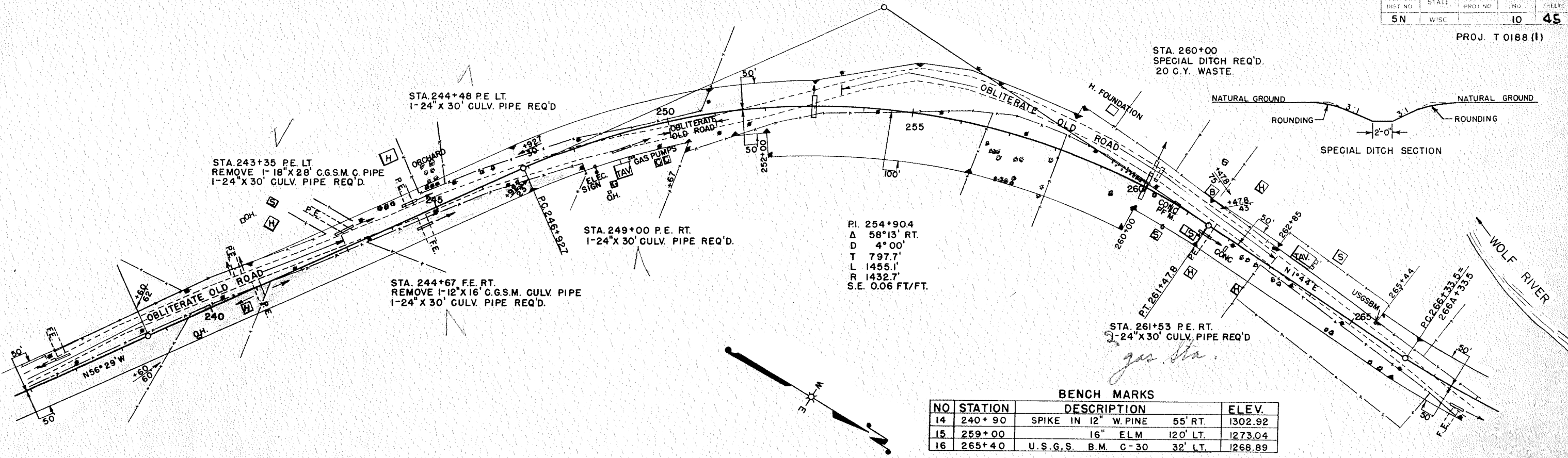


BENCH MARKS

NO	STATION	DESCRIPTION	ELEV.
12	213+90	SPIKE IN 12" MAPLE 35' LT.	1305.49
13	226+60	" " 20" " 100' RT.	1304.90
14	240+90	" " 12" W. PINE 55' RT.	1302.92

NET LENGTH OF CENTERLINE STA. 209+00 TO STA. 239+00- 3000 LIN. FT.



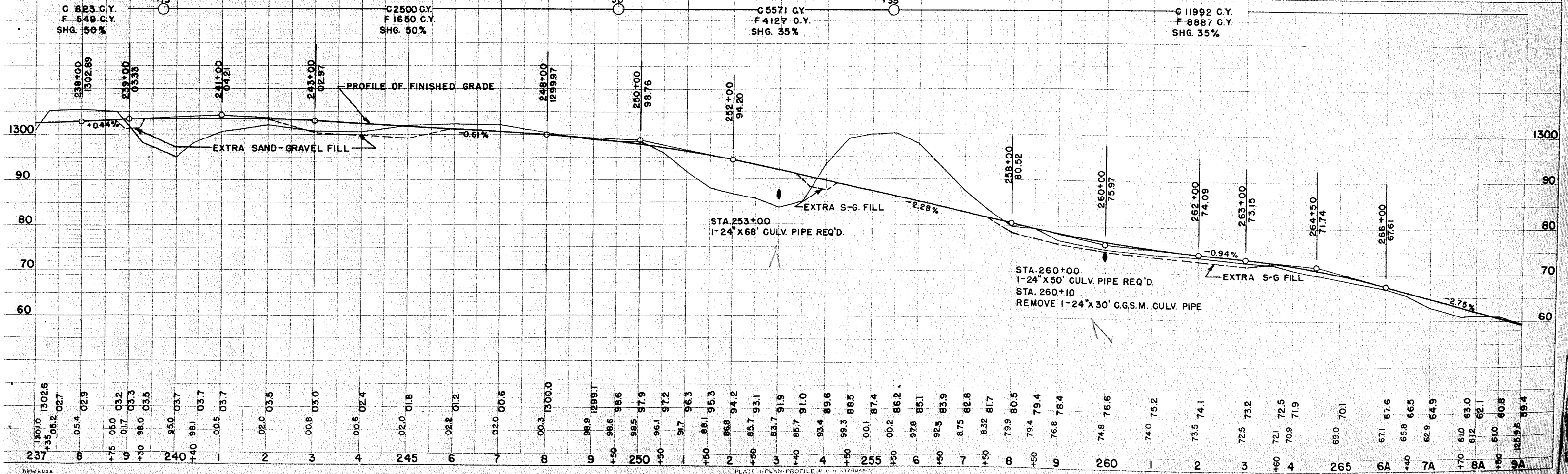


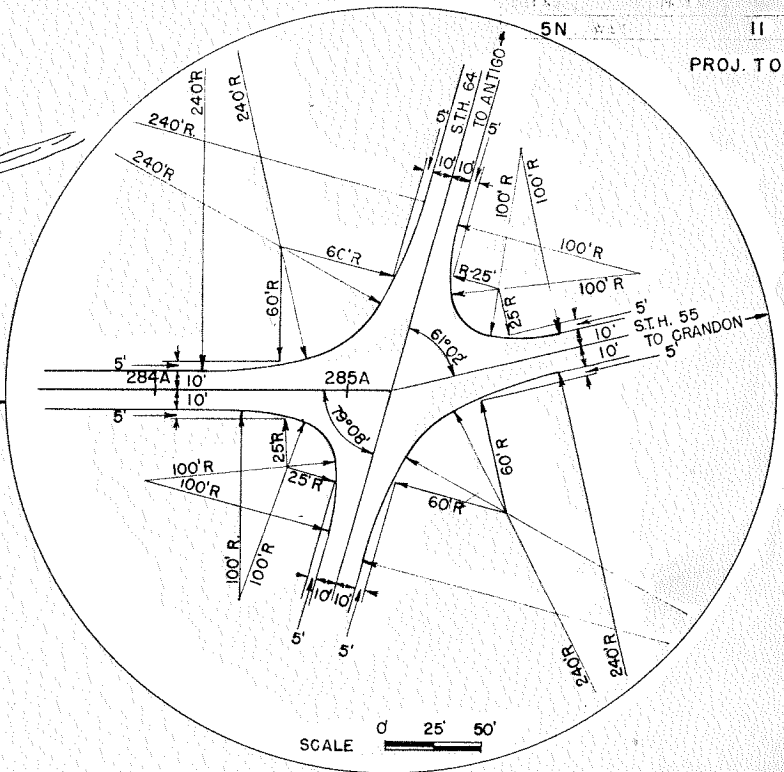
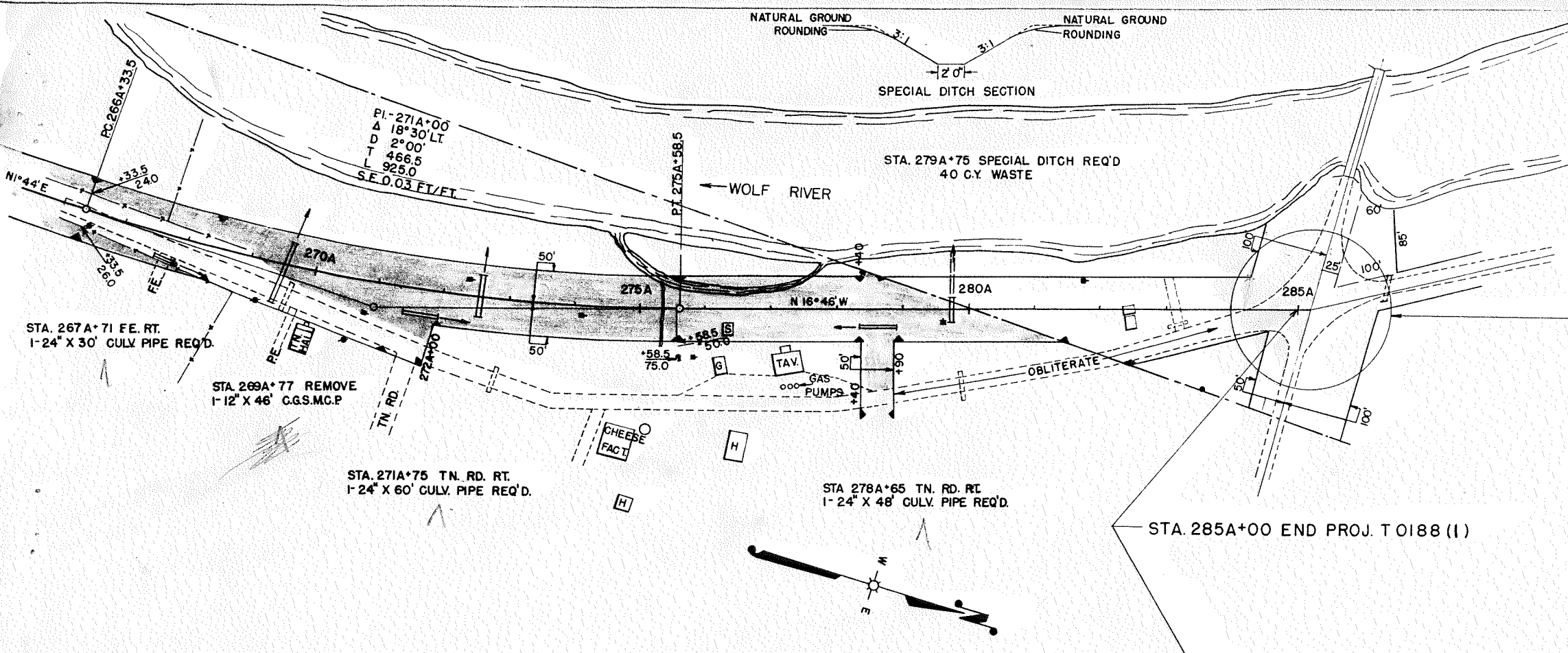
PI. 254+90.4
 Δ 58°13' RT.
 D 4°00'
 T 797.7'
 L 1455.1'
 R 1432.7'
 S.E. 0.06 FT/FT.

BENCH MARKS

NO	STATION	DESCRIPTION	ELEV.
14	240+90	SPIKE IN 12" W. PINE 55' RT.	1302.92
15	259+00	16" ELM 120' LT.	1273.04
16	265+40	U.S.G.S. B.M. C-30 32' LT.	1268.89

NET LENGTH OF CENTERLINE STA. 239+00 TO STA. 269+00 = 3000 LIN. FT.





BENCH MARKS

NO	STATION	DESCRIPTION	ELEV.
17	273A+50	SPIKE IN 20" ELM	110' RT. 1252.75
18	284A+70	" " 7" ELM	105' LT. 1251.32

NET LENGTH OF CENTERLINE STA. 269A+00 TO 285A+00 = 1600 LIN. FT.

C 320 C.Y.
 BORROW 2900 C.Y.
 F 2309
 SHG. 4.0%

