

COUNTY AND HIGHWAY	ROUTE AND SECTION	CLASS AND AGREEMENT		FEDERAL DIVISION OFFICE
		STATE	FEDERAL	
34.6	938.0		11.1	WIS. 4

INDEX OF SHEETS

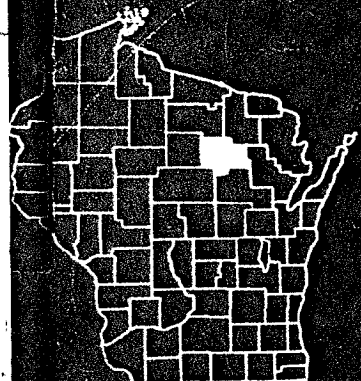
- 1 TITLE
- 2 TYPICAL CROSS SECTIONS
- 2 ESTIMATE OF QUANTITIES
- 2 MISCELLANEOUS QUANTITIES
- RIGHT OF WAY PLAT
- 3-8 PLAN AND PROFILE STA. 0+09 TO STA. 155+00
- 9-11 STANDARD DETAILS
- DRAINAGE STRUCTURES
- 12-45 CROSS SECTIONS

STATE OF WISCONSIN  
STATE HIGHWAY COMMISSION OF WISCONSIN

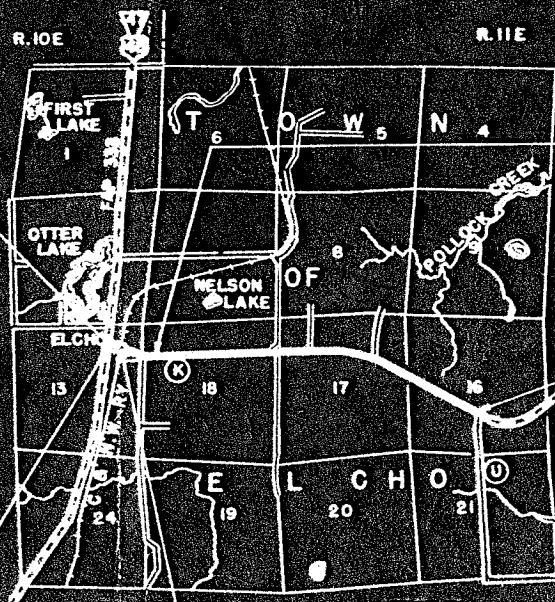
PLAN AND PROFILE OF PROPOSED  
ELCHO-POST LAKE ROAD  
C.T.H. "K"  
LANGLADE COUNTY  
PROJECT S 0938 (1)

BEGINNING AT A POINT 9 FEET EAST OF THE CENTERLINE INTERSECTION OF ANTIGO AND RUMMEL STREETS IN THE VILLAGE OF ELCHO AND EXTENDING EASTERLY TO A POINT 1770 FEET NORTH AND 165 FEET WEST OF THE SOUTH QUARTER CORNER OF SECTION 16, T 34 N, R 11 E

SCALES | PLAN 1 IN. = 100 FT.  
| PROFILE HOR. 1 IN. = 100 FT. VERT. 1 IN. = 10 FT.  
| CROSS SECTIONS HOR. 1 IN. = 5 FT. VERT. 1 IN. = 5 FT.



STA. 0+00 PROJ. S0938(1)  
- STA. 357+70 F.A.P. 333 - 1923



STATION EQUATION

- STA. 19+29.0 BACK
- STA. 19+29.7 AHEAD

STA. 155+00 END OF PROJ. S0938(1)

EXCEPTION TO PROJECT:  
STA. 4+37.85 - 4+45.55  
STA. 4+47.25 - 4+48.85

STA. 0+09 BEGINNING OF PROJ. S0938(1)

LAYOUT



TOTAL NET LENGTH OF CENTERLINE = 2.931 MI.

CONVENTIONAL SIGNS	
LINE	CULVERTS IN PLACE
Y LINE	CULVERTS REQUIRED
SHIP OR RANGE LINE	DROP INLET
ON LINE	POWER POLE
RIGHT OF WAY LINE	TELEPHONE OR TELEGRAPH POLE
INT RIGHT OF WAY LINE	RIGHT OF WAY MARKERS
FENCE (WOVEN)	REFERENCE STAKE FOR HUBS ONLY
FENCE (BARBED)	MARSH
LINE	HEDGE
STATE OR CITY LIMITS	TREES
CITY LINE	GROUND ELEVATION
PAVED WAY OR P.E.	GRADE ELEVATION
ROAD SURVEY LINE	

APPROVED FOR  
RECORD # 20185  
LANGLADE COUNTY SURVEYORS OFFICE  
DATE FILED: 10/4/00 BY: P. T. Dwyer

20185

STATE HIGHWAY COMMISSION OF WISCONSIN  
MADISON, WISCONSIN

SURVEYOR: D.C.S. AMH  
DISTRICT COMPUTER: END  
DISTRICT CHECKER: END

CORRECT: 6-30-05  
DATE: 7/5/05  
RECOMMENDED FOR APPROVAL: J. J. O.  
APPROVED: 7/9/05  
DATE: 7/9/05

DEPARTMENT OF CONSTRUCTION  
BUREAU OF PUBLIC WORKS

Lang. Co. Copy

STA 0+00 - STA 357+70  
OF F.A.P. 333-1923



NEW CURVE DATA  
P.I. = 17+33.7  
Δ = 27° 56' LT.  
D = 7° 00'  
T = 203.7'  
L = 399.4'  
SE. = 0.06/FT.  
TRAN. = 210'

OLD CURVE DATA  
P.I. = 17+21.9  
Δ = 27° 02' LT.  
D = 8° 00'  
T = 172.4'  
L = 357.9'  
SE. = 0.05/FT.  
TRAN. = 216'

STA 8+45 S.R. LT.  
1-18" X 50' PIPE CULV. REQ'D.

STA 11+00 PE LT  
1-18" X 30' PIPE CULV. REQ'D

STA 15+00 SPECIAL  
DITCH REQ'D. SOCY.  
WASTE

STA 18+25 PE LT  
1-18" X 30' PIPE CULV. REQ'D.

STA 8+45 S.R. RT.  
1-18" X 50' PIPE CULV. REQ'D.

OLD CURVE DATA  
P.I. = 11+77.7  
Δ = 15° 10' RT.  
D = 4° 00'  
T = 190.7'  
L = 379.2'  
SE. = 0.04/FT.  
TRAN. = 150'

STA 17+90 PE RT.  
1-18" X 30' PIPE CULV. REQ'D.  
REMOVE 1-18" X 18"

STA 4+37.55 - 4+45.55  
STA 4+57.25 - 4+68.25  
R.R. EXCEPTION  
TO PROJECT 16.0 FT.

MET LENGTH OF CENTER LINE STA 0+09 - 25+00 = 2474.3 LIN. FT.

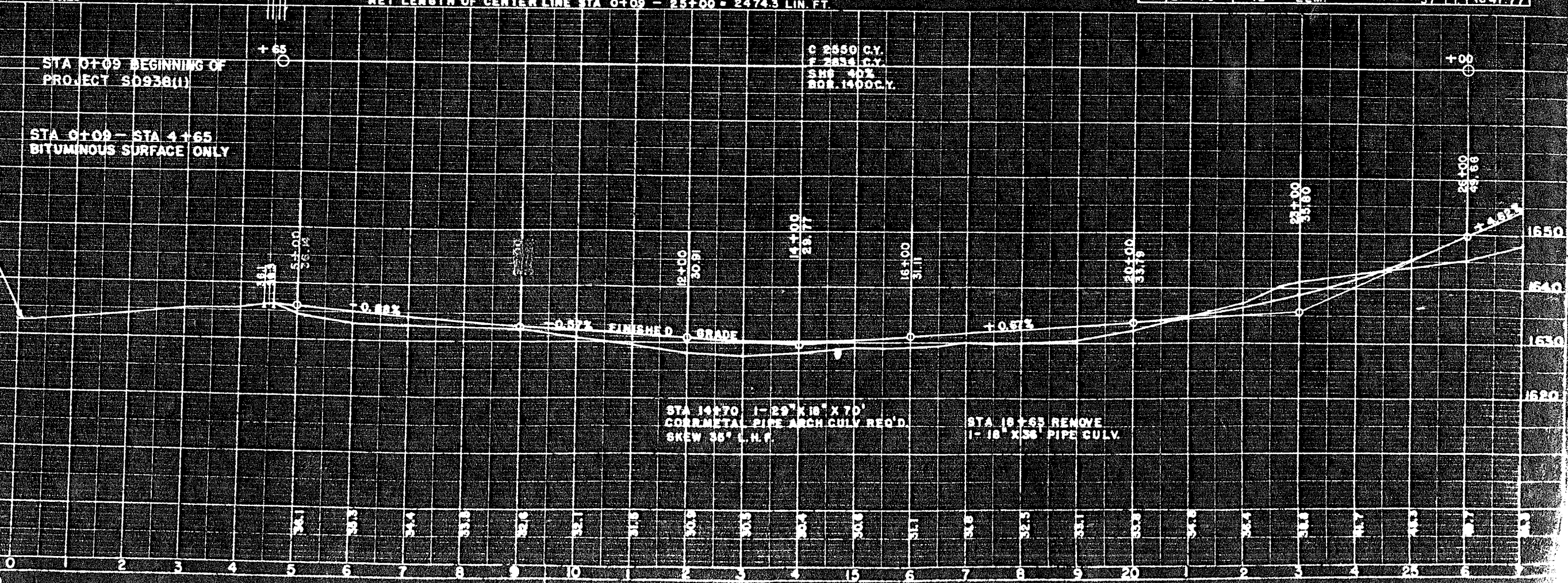
BENCH MARKS

NO.	STA.	DESCRIPTION	EL. FT.
1	0+30	END OF GAS PUMP ISLAND 39' LT.	1633.50
2	9+15	36" SOFT MAPLE 47' RT.	1633.61
3	17+65	LOWER STEP OF PORCH 114 LT.	1632.30
4	27+70	12" ELM.	1647.77

STA 0+09 BEGINNING OF  
PROJECT S0938(1)

STA 0+00 - STA 4+65  
BITUMINOUS SURFACE ONLY

C 2650 C.Y.  
F 2834 C.Y.  
SMB 40%  
BOR. 1400 C.Y.



STA 14+70 1-29" X 18" X 70'  
CORR METAL PIPE ARCH CULV. REQ'D.  
SKEW 35° L.N.T.

STA 18+65 REMOVE  
1-18" X 36" PIPE CULV.

STA 29+30 PE LT REMOVE 1-15" X 18' PIPE CULV.  
1-18" X 30' PIPE CULV. REQ'D.

STA 34+55 PE LT. REMOVE  
1-12" X 24' PIPE CULV.  
1-18" X 30' PIPE CULV. REQ'D.

STA 32+35 PE LT.  
REMOVE 1-12" X 20' PIPE CULV.

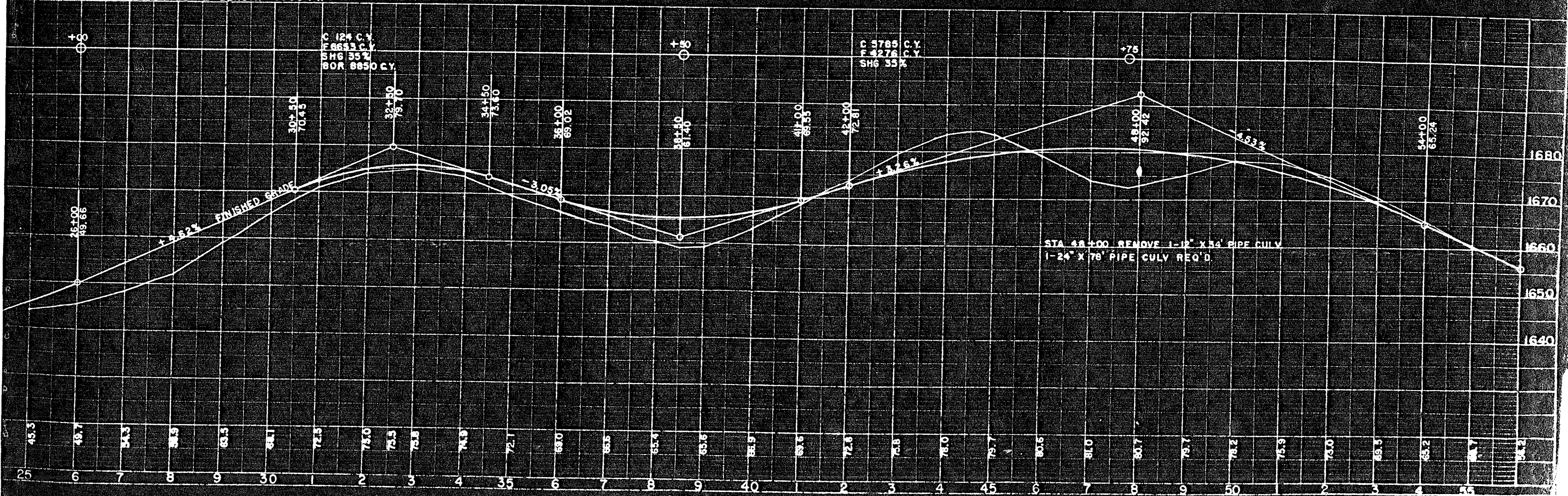
STA 36+00 PE LT REMOVE  
1-12" X 24' PIPE CULV.  
1-18" X 30' PIPE CULV. REQ'D.

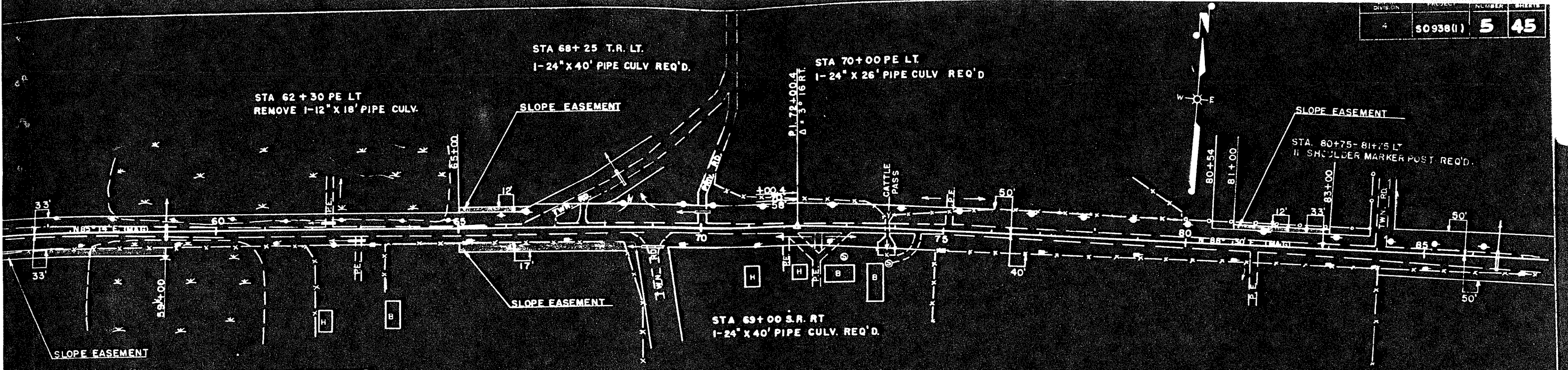
STA 30+70 PE RT  
1-18" X 30' PIPE CULV. REQ'D.

STA 42+00 PE RT.  
1-18" X 30' PIPE CULV. REQ'D.

BENCH MARKS			
NO	STATION	DESCRIPTION	ELEV.
4	27+70	12" ELM 57' LT	1647.77
5	36+50	10" HARD MAPLE 52' LT	1667.65
6	42+00	36" ELM 114' RT	1674.47
7	53+70	8" ELM 60' RT	1669.97

STA 25+00 - 55+00 NET CENTERLINE LENGTH = 3000 FT.



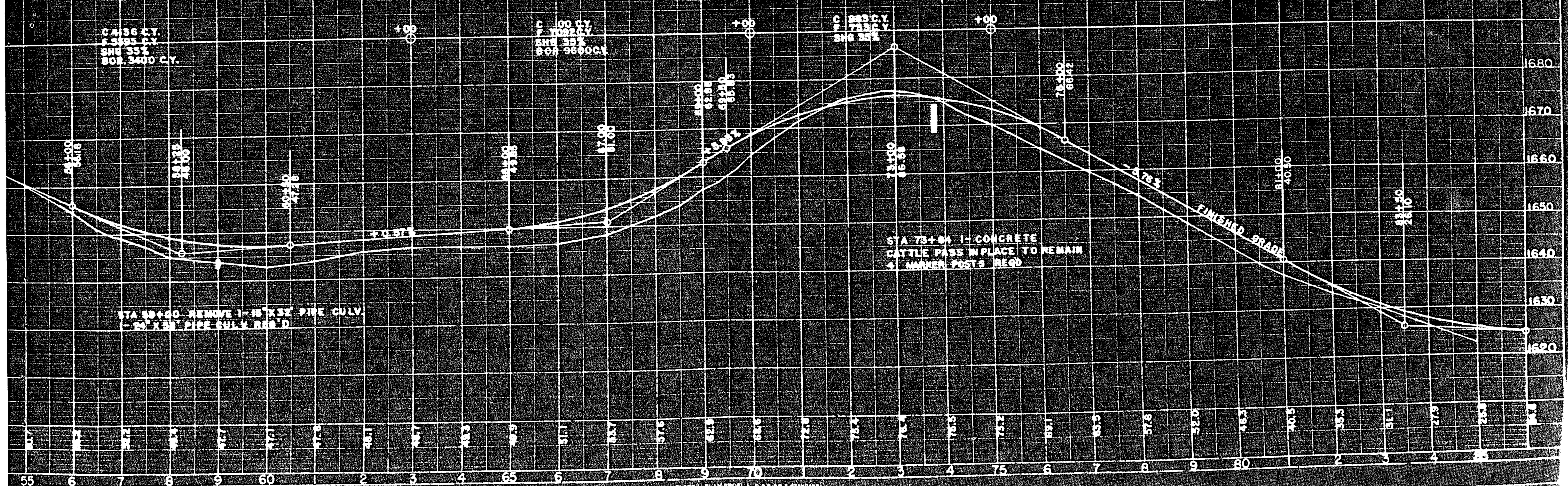


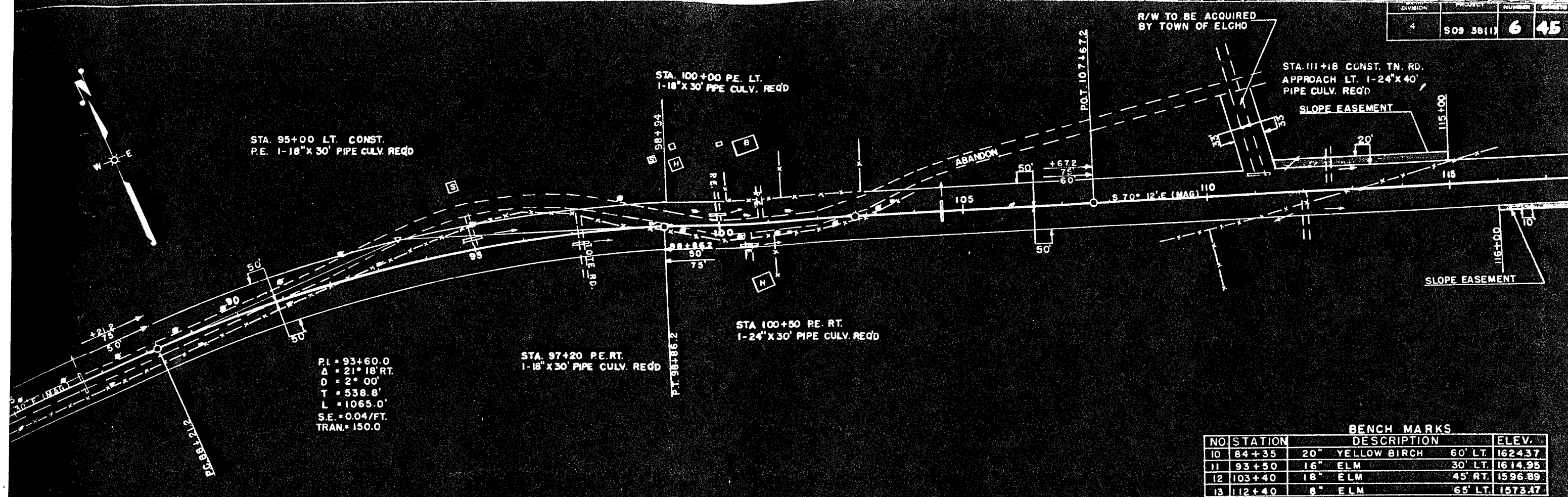
STA 62+95 PE RT REMOVE  
 1-12" X 10' PIPE CULVERT  
 1-18" X 30' PIPE CULV. REQ'D

BENCH MARKS

NO.	STATION	DESCRIPTION	ELEV.
7	53+70	8" ELM 60' RT.	1669.97
8	62+30	9" OAK 45' LT.	1647.18
9	69+75	6" CHERRY 60' LT.	1659.36
10	84+35	20" YELLOW BIRCH 60' LT.	1624.37

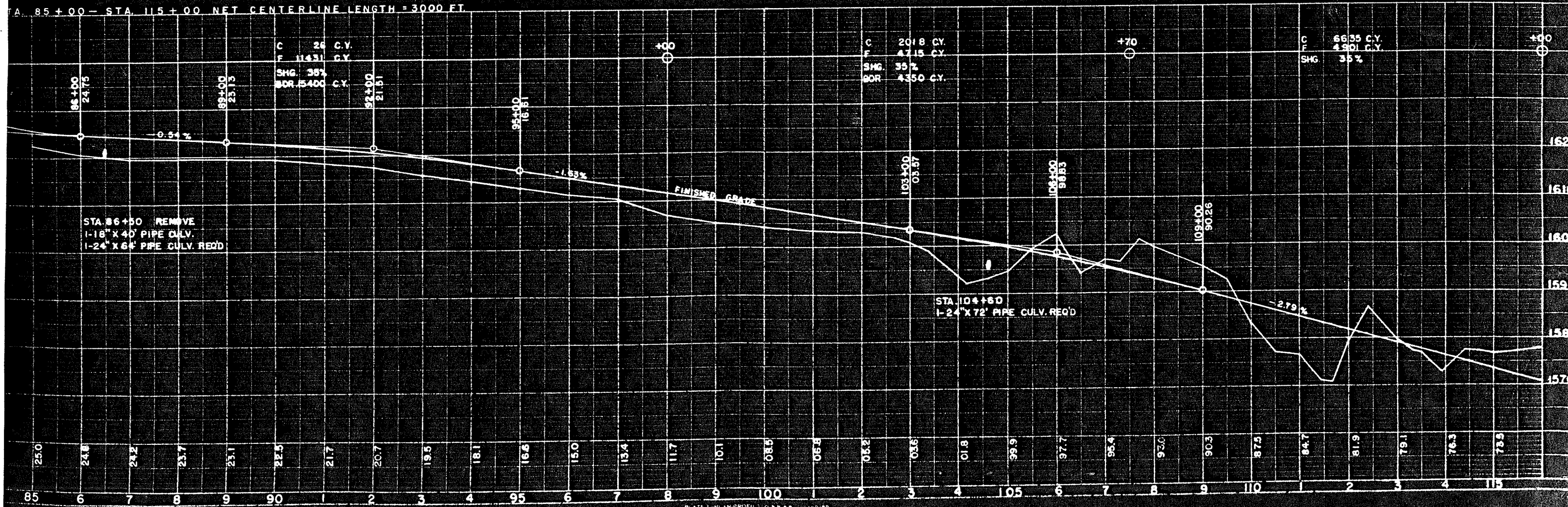
55+00- STA 85+00 NET CENTERLINE LENGTH=3000 FT

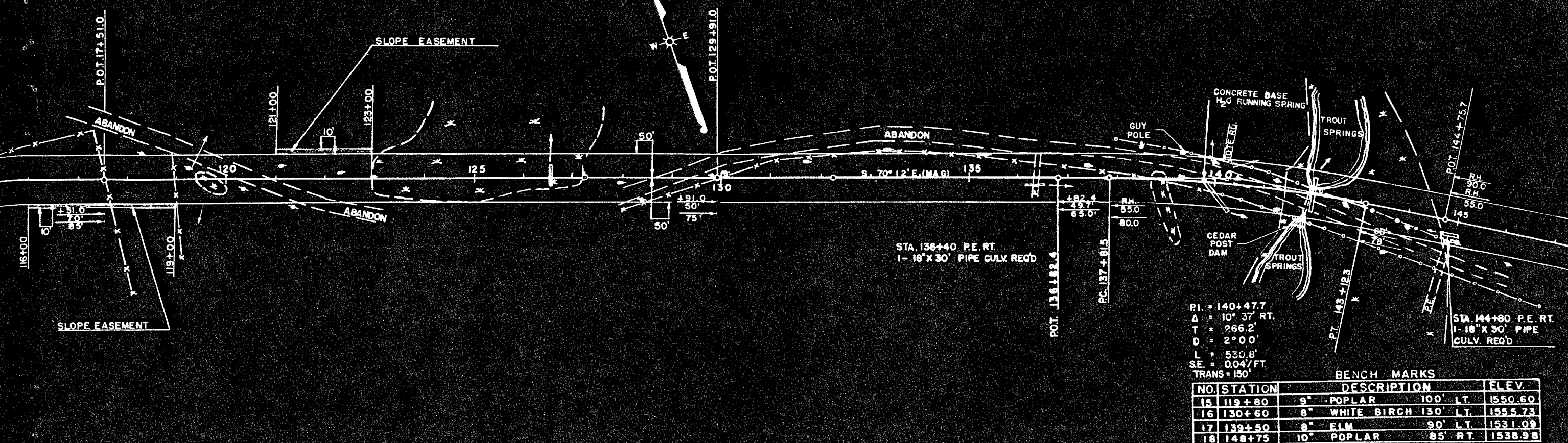




**BENCH MARKS**

NO	STATION	DESCRIPTION	ELEV.
10	84+35	20" YELLOW BIRCH 60' LT.	1624.37
11	93+50	16" ELM 30' LT.	1614.95
12	103+40	18" ELM 45' RT.	1596.89
13	112+40	6" ELM 65' LT.	1573.47



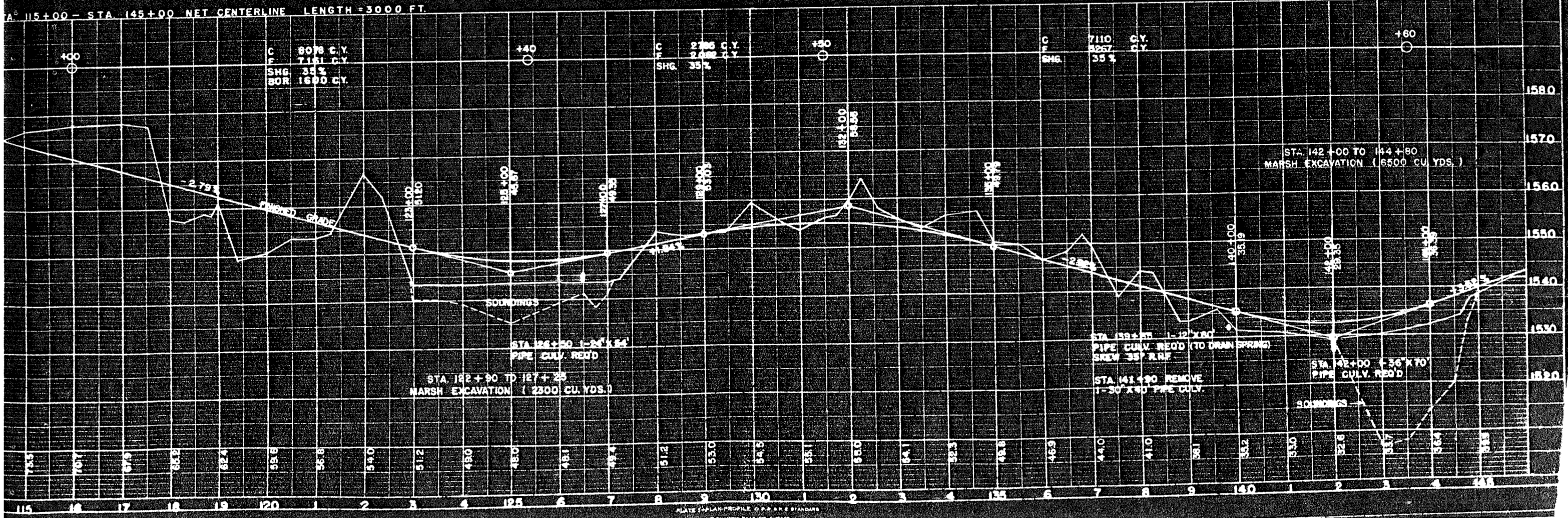


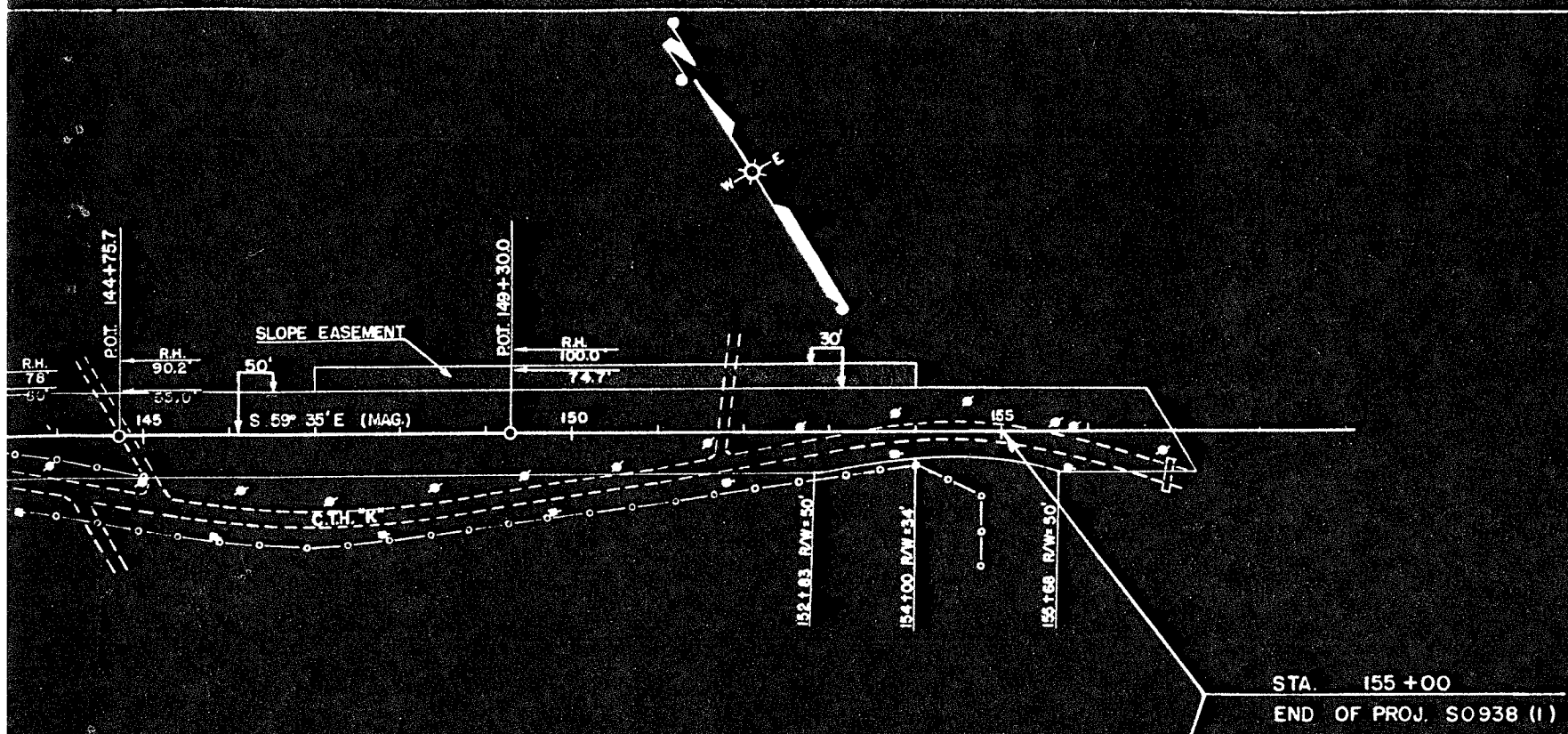
PI = 140+47.7  
 Δ = 10° 37' RT.  
 T = 266.2'  
 D = 2° 00'  
 L = 530.8'  
 SE = 0.04/FT  
 TRANS = 150'

BENCH MARKS

NO.	STATION	DESCRIPTION	ELEV.
15	119+80	9" POPLAR 100' LT.	1550.60
16	130+60	8" WHITE BIRCH 130' LT.	1555.73
17	139+50	8" ELM 90' LT.	1531.09
18	148+75	10" POPLAR 85' RT.	1538.98

STA. 115+00 - STA. 145+00 NET CENTERLINE LENGTH = 3000 FT.





STA. 155+00  
END OF PROJ. S0938 (1)

BENCH MARKS

NO	STATION	DESCRIPTION	ELEV.
18	148+75	10" POPLAR 85' RT.	1539.98
19	159+10	12" NORWAY PINE 55' LT.	1536.96

STA. 145+00 TO STA. 155+00 NET CENTERLINE LENGTH = 1000 FT.

