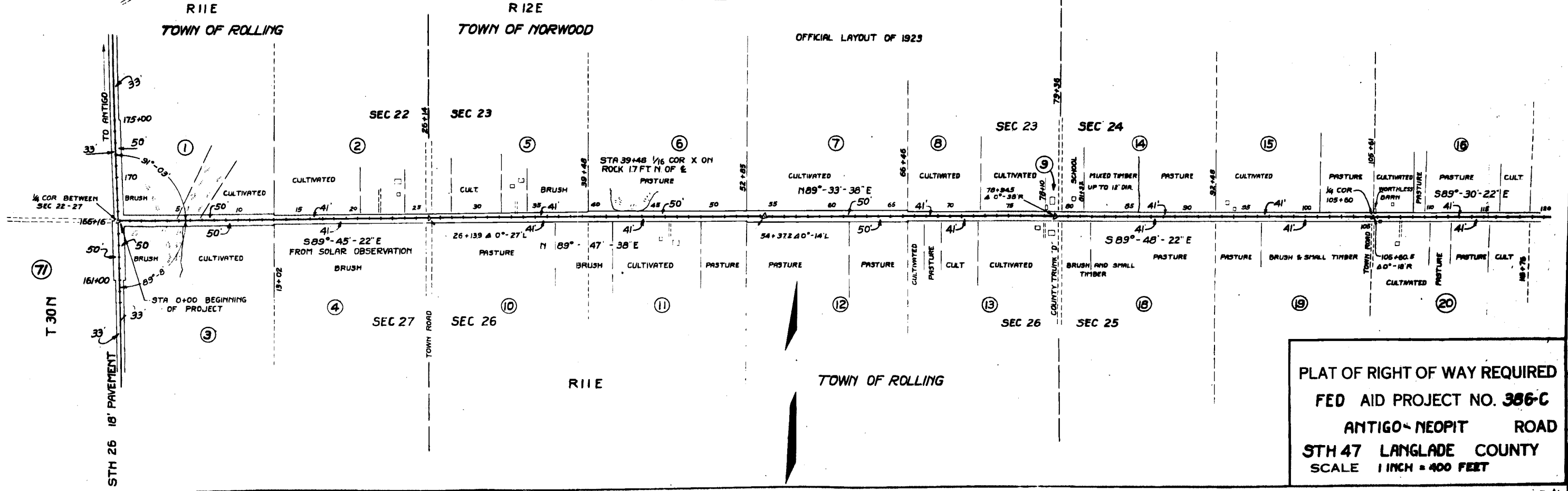
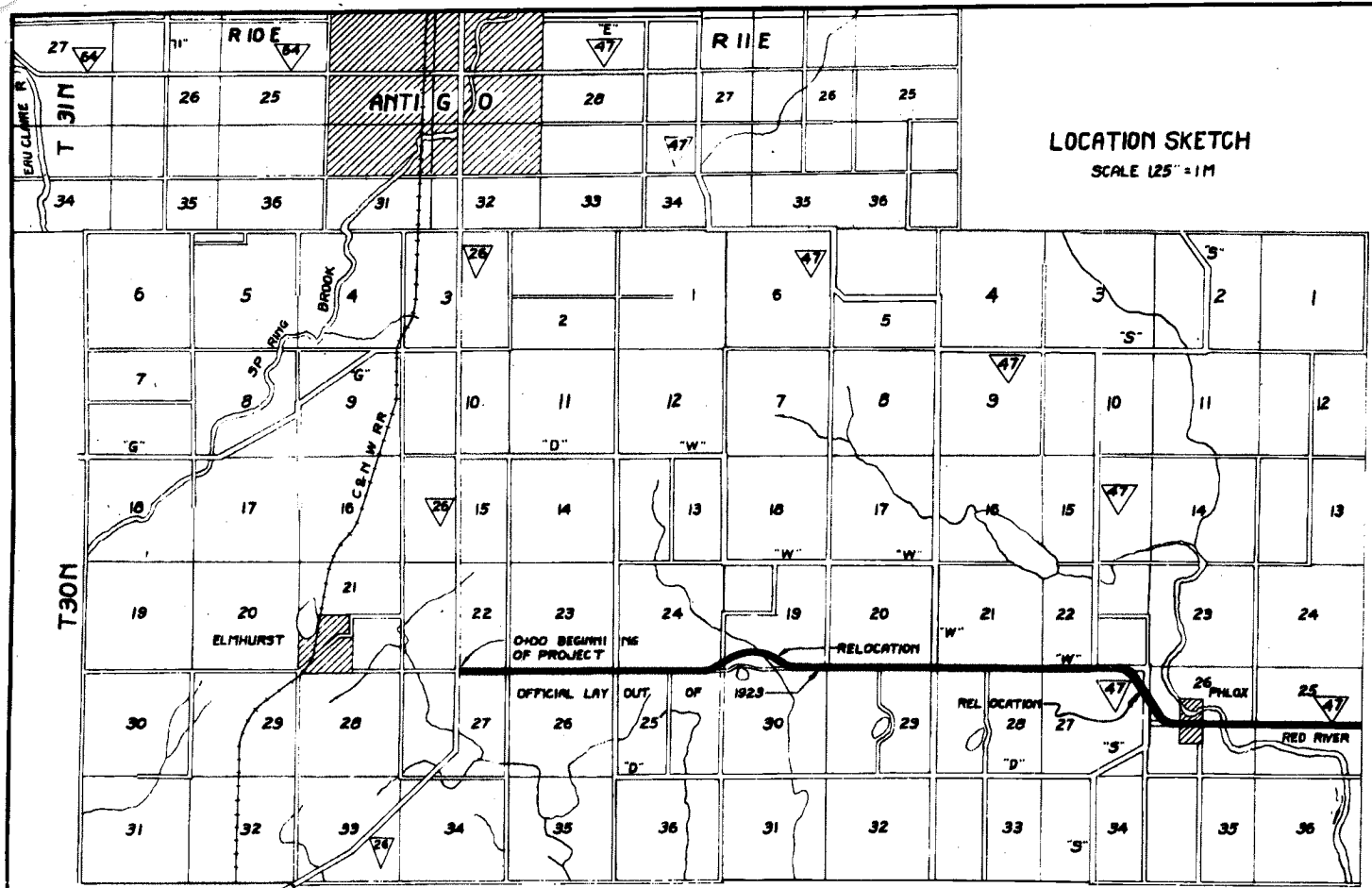
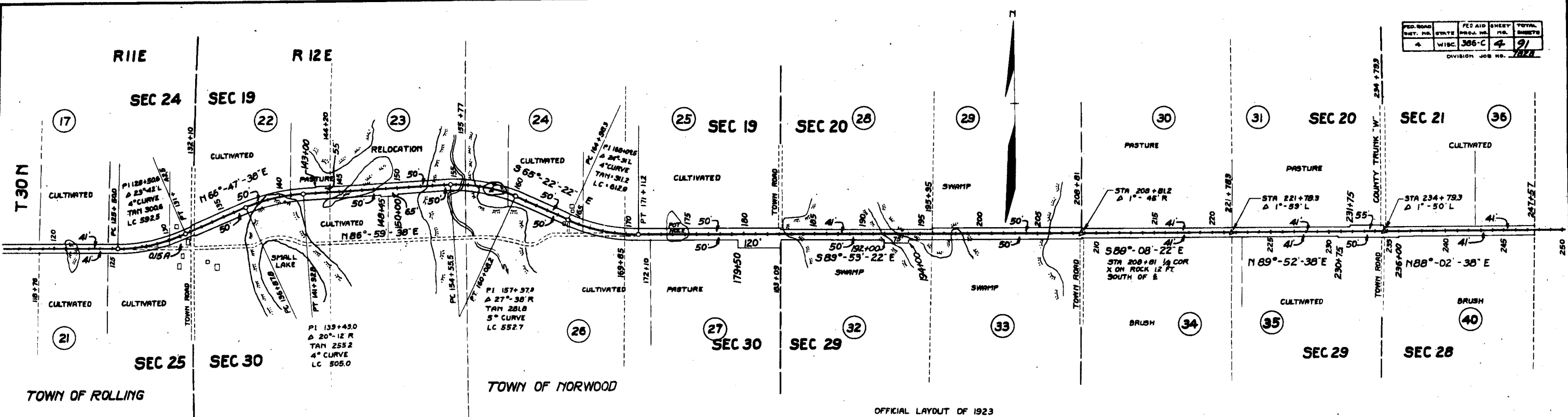


FED. ROAD DIST. NO.	STATE	FED. AID PROJ. NO.	SHEET NO.	TOTAL SHEETS
4	WISC.	386-C	3	71
DIVISION JOB NO. 7128				



RECORD # 20193
LANGLADE COUNTY SURVEYORS & OFFICE
DATE FILED: 5/14/01 BY: D. J. [Signature]

7128
1084

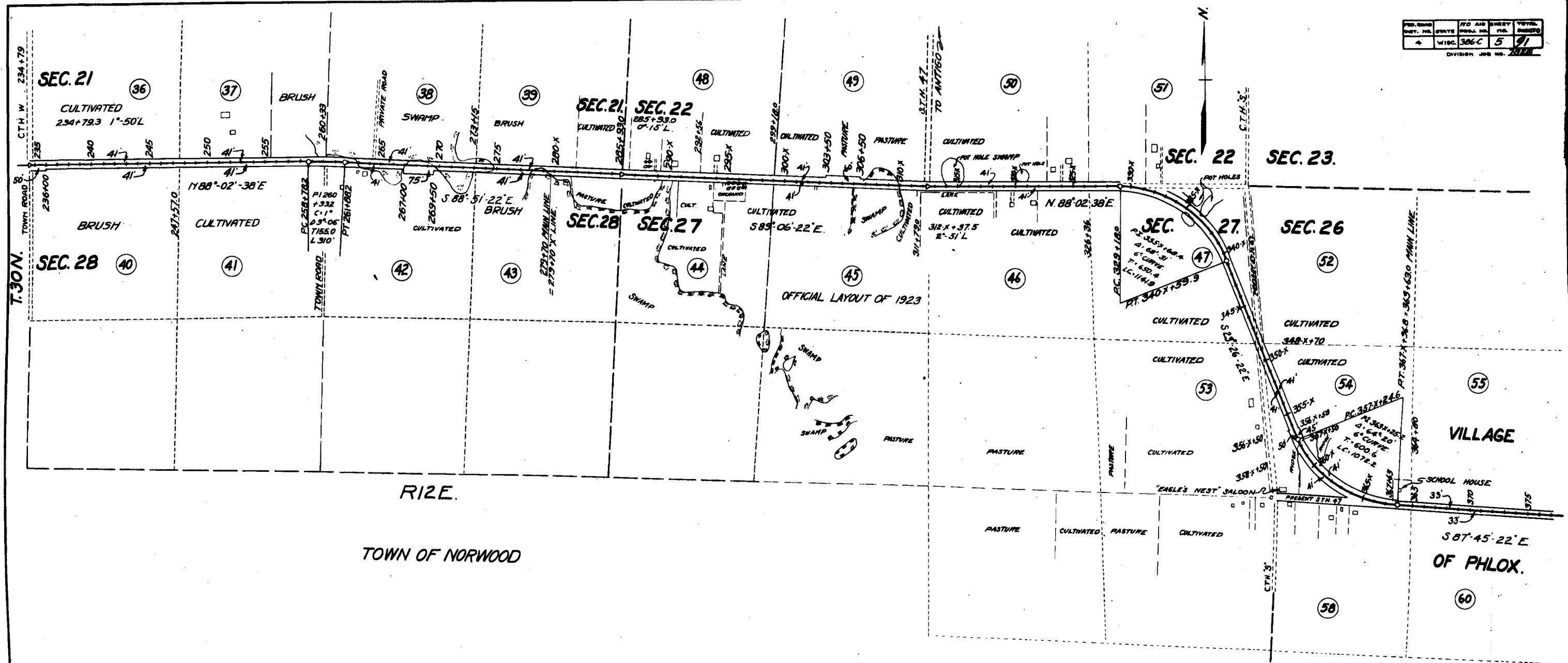


NO	OWNER	ADDRESS	ACRES	DESCRIPTION	MORTGAGEE	ADDRESS	AMOUNT PAID				
							R/W	FENCE	BLDG	TOTAL	PAID
1	J.M. BEMIS & SON	R.R. 3 ANTIGO	0.84	SW 1/4 - SE 1/4 SEC 22 T30N R11E							
2	AMANDA RIEMER	R.R. 3 ANTIGO	0.24	SE 1/4 - SE 1/4 SEC 22 T30N R11E							
3	W.J. KNOTT	811 CLERMONT ST. ANTIGO	0.70	NW 1/4 - NE 1/4 SEC 27 T30N R11E							
4	WALLACE KENNEDY	R.R. 3 ANTIGO	0.24	NE 1/4 - NE 1/4 SEC 27 T30N R11E							
5	FRED FELLNER	R.R. 3 ANTIGO	0.24	SW 1/4 - SW 1/4 SEC 23 T30N R11E							
6	JNO. LENZNER	R.R. 3 ANTIGO	0.52	SE 1/4 - SW 1/4 SEC 23 T30N R11E							
7	JNO. LENZNER	R.R. 3 ANTIGO	0.53	SW 1/4 - SE 1/4 SEC 29 T30N R11E							
8	JNO. LENZNER	R.R. 3 ANTIGO	0.21	SE 1/4 - SE 1/4 SEC 23 T30N R11E							
9	LOUIS KORTH	R.R. 3 ANTIGO	0.02								
10	FRED FELLNER	R.R. 3 ANTIGO	0.24	NW 1/4 - NW 1/4 SEC 26 T30N R11E							
11	EDW. SMITH	R.R. 3 ANTIGO	0.25	NE 1/4 - NW 1/4 SEC 26 T30N R11E							
12	C.J. BEMIS	R.R. 3 ANTIGO	0.53	NW 1/4 - NE 1/4 SEC 26 T30N R11E							
13	C.J. BEMIS	R.R. 3 ANTIGO	0.24	NE 1/4 - NE 1/4 SEC 26 T30N R11E							
14	FRED SCHWEITZER	R.R. 3 ANTIGO	0.20	SW 1/4 - SW 1/4 SEC 24 T30N R11E							
15	GEO. SCHWEITZER	R.R. 3 ANTIGO	0.24	SE 1/4 - SW 1/4 SEC 24 T30N R11E							
16	LEONARD VANDERHEL	R.R. 3 ANTIGO	0.24	SW 1/4 - SE 1/4 SEC 24 T30N R11E							
17	ALBERT PAGEL	R.R. 3 ANTIGO	0.57	SE 1/4 - SE 1/4 SEC 24 T30N R11E							
18	F.K. PAWLITSCHKE	R.R. 3 ANTIGO	0.24	NW 1/4 - NW 1/4 SEC 25 T30N R11E							
19	F.K. PAWLITSCHKE	R.R. 3 ANTIGO	0.24	NE 1/4 - NW 1/4 SEC 25 T30N R11E							
20	GEO. VANDERHEI	R.R. 3 ANTIGO	0.24	NW 1/4 - NE 1/4 SEC 25 T30N R11E							
21	ELIZABETH WYHIGA	R.R. 3 ANTIGO	0.14	NE 1/4 - NE 1/4 SEC 28 T30N R11E							
22	JOS. DRAB	R.R. 3 ANTIGO	2.79	SW 1/4 - SW 1/4 SEC 19 T30N R12E							
23	JOS. DRAB	R.R. 3 ANTIGO	2.71	SE 1/4 - SW 1/4 SEC 19 T30N R12E							
24	FRED ROLLO	LANE ROAD, ANTIGO	1.50	SW 1/4 - SE 1/4 SEC 19 T30N R12E							
25	FRED ROLLO	LANE ROAD, ANTIGO	0.52	SE 1/4 - SE 1/4 SEC 19 T30N R12E							
26	OTTO HILGER	R.R. 3 ANTIGO		NW 1/4 - NE 1/4 SEC 30 T30N R12E							
27	OTTO HILGER	R.R. 3 ANTIGO	1.09	NE 1/4 - NE 1/4 SEC 30 T30N R12E							
28	W.J. HAMMOND	723 1ST AVE, ANTIGO	0.24	SW 1/4 - SW 1/4 SEC 20 T30N R12E	DELINQUENT						
29	W.J. HAMMOND	723 1ST AVE, ANTIGO	0.50	SE 1/4 - SW 1/4 SEC 20 T30N R12E	DELINQUENT						
30	ARTHUR SCHMALL	R.R. 3 ANTIGO	0.24	SW 1/4 - SE 1/4 SEC 20 T30N R12E							
31	FRED CHEKAL	R.R. 3 ANTIGO	0.34	SE 1/4 - SE 1/4 SEC 20 T30N R12E							
32	W.J. HAMMOND	723 1ST AVE, ANTIGO	0.62	NW 1/4 - NW 1/4 SEC 29 T30N R12E	DELINQUENT						
33	R.F. SCHMALL	R.R. 3 ANTIGO	0.50	NE 1/4 - NW 1/4 SEC 29 T30N R12E							
34	MAYNARD MEYERS	R.R. 3 ANTIGO	0.24	NW 1/4 - NE 1/4 SEC 29 T30N R12E							
35	W.B. KROMER	MATTOON WIS	0.32	NE 1/4 - NE 1/4 SEC 29 T30N R12E							

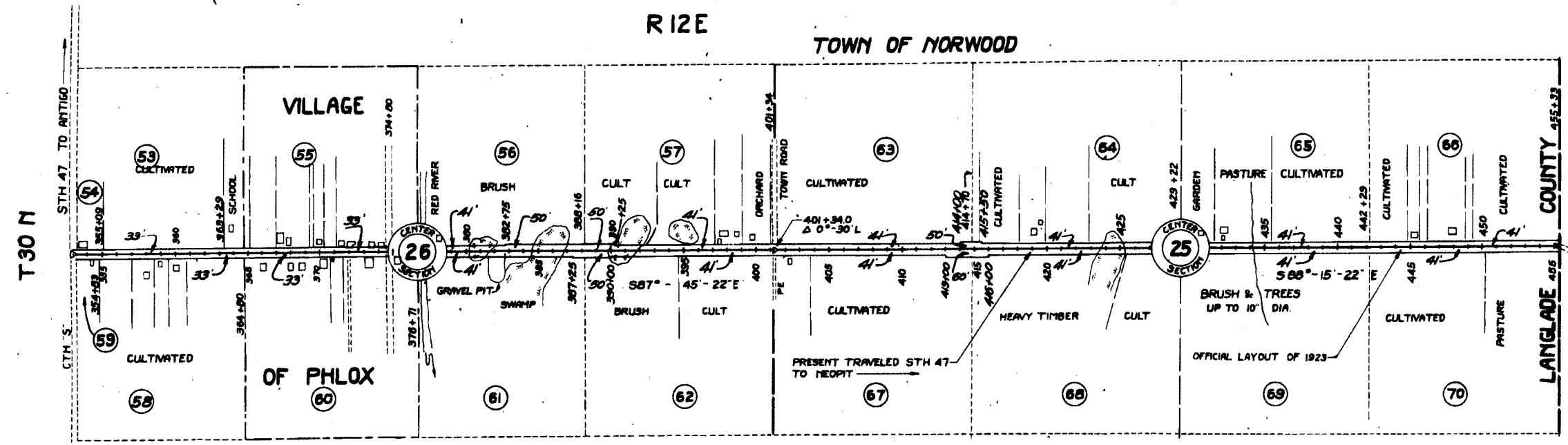
PLAT OF RIGHT OF WAY REQUIRED
 FED AID PROJECT NO. 306-C
 ANTIGO-NEOPIT ROAD
 STH 47 LANGLADE COUNTY
 SCALE 1 INCH = 400 FEET

2084

NO. 386-C	STATE	FED. AID	SHEET	TOTAL
4	WISC.	386-C	5	91
DIVISION JOB NO. 2111				



PLAT OF RIGHT OF WAY REQUIRED
 FED. AID PROJECT NO. 386-C
 ANTIGO - NEOPIT ROAD
 S.T.H. 47 LANGLADE COUNTY
 SCALE 1 INCH = 400 FEET



NO	OWNER	ADDRESS	ACRES	DESCRIPTION	MORTGAGEE	ADDRESS	AMOUNT PAID				REMARKS
							R/W	FENCE	BLOGS	TOTAL PAID	
36	FRED CHEKAL	R.R. 3 ANTIGO	0.23	SW 1/4 - SW 1/4 SEC 21 T30N R12E							
37	FRED CHEKAL	R.R. 3 ANTIGO	0.23	SE 1/4 - SW 1/4 SEC 21							
38	JOS. ASCHENBRENNER	R.R. 3 ANTIGO	0.24	SW 1/4 - SE 1/4 SEC 21							
39	WENZEL HOYEK	R.R. 3 ANTIGO	0.23	SE 1/4 - SE 1/4 SEC 21							
40	FRED TEAL	R.R. 3 ANTIGO	0.26	NW 1/4 - NW 1/4 SEC 28 T30N R12E							
41	CHRIST KUHR	R.R. 3 ANTIGO	0.23	NE 1/4 - NW 1/4 SEC 28							
42	CHRIST KUHR	R.R. 3 ANTIGO	0.43	NW 1/4 - NE 1/4 SEC 28							
43	W.J. HARRISON	723 1 ST AVE. ANTIGO	0.23	NE 1/4 - NE 1/4 SEC 28	DELINQUENT						
44	J.M. HILGER	R.R. 3 ANTIGO	0.24	NW 1/4 - NW 1/4 SEC 27 T30N R12E							
45	H.J. HERSANT	R.R. 3 ANTIGO	0.50	NE 1/4 - NW 1/4 SEC 27							
46	HENRY HERSANT	R.R. 3 ANTIGO		NW 1/4 - NE 1/4 SEC 27							
47	H.E. BROOKS	CLINTONVILLE	3.25	NE 1/4 - NE 1/4 SEC 27							
48	WENZEL HAYEK	R.R. 3 ANTIGO	0.24	SW 1/4 - SW 1/4 SEC 22							
49	CHAS. WALDOVÖGEL	R.R. 3 ANTIGO	0.63	SE 1/4 - SW 1/4 SEC 22							
50	"	R.R. 3 ANTIGO		SW 1/4 - SE 1/4 SEC 22							
51	HENRY F. HAYES	R.R. 3 ANTIGO	0.08	SE 1/4 - SE 1/4 SEC 22							
52	H.E. BROOKS	CLINTONVILLE	0.00	NW 1/4 - NW 1/4 SEC 26							
53	ANDREW REGAN	PHLOX	3.24	SE 1/4 - NE 1/4 SEC 27 T30N R12E							
54	"	PHLOX WIS		SW 1/4 - NW 1/4 SEC 26							
55	LOUIS STECKBAUER	512 DORR ST ANTIGO		SE 1/4 - NW 1/4 SEC 26							
56	HARRY BROOKS	CLINTONVILLE WIS	0.32	SW 1/4 - NE 1/4 SEC 26							
57	HERMAN MENTING	PHLOX	0.29	SE 1/4 - NE 1/4 SEC 26							
58	ANDREW REGAN	PHLOX		NW 1/4 - SW 1/4 SEC 26							
59	A.F. SCHULTZE	PHLOX		NW 1/4 - SW 1/4 SEC 26							
60	HUBERT HUYBERS	PHLOX		NE 1/4 - SW 1/4 SEC 26							
61	J.A. FELLNER	R.R. 3 ANTIGO	0.23	NW 1/4 - SE 1/4 SEC 26							
62	J.A. FELLNER	R.R. 3 ANTIGO	0.28	NE 1/4 - SE 1/4 SEC 26							
63	F.K. PAWLITSCHKE	R.R. 3 ANTIGO	0.26	SW 1/4 - NW 1/4 SEC 25 T30N R12E							
64	DAVID BISSONETTE	PHLOX	0.28	SE 1/4 - NW 1/4 SEC 25							
65	WM. BISSONETTE	PHLOX	0.24	SW 1/4 - NE 1/4 SEC 25							
66	WM. VERHASSELT	PHLOX	0.24	SE 1/4 - NE 1/4 SEC 25							
67	BARNEY BERENDSEN	PHLOX	0.32	NW 1/4 - SW 1/4 SEC 25							
68	BARNEY BERENDSEN	PHLOX	0.32	NE 1/4 - SW 1/4 SEC 25							
69	BARNEY BERENDSEN	PHLOX	0.24	NW 1/4 - SE 1/4 SEC 25							
70	WM. VERHASSELT	PHLOX	0.24	NE 1/4 - SE 1/4 SEC 25							
71	W.J. KNOTT	811 CLERMONT ST ANTIGO	0.20	NE 1/4 - NW 1/4 SEC 27							
			TOTAL	32.72							

PLAT OF RIGHT OF WAY REQUIRED
 FED AID PROJECT NO. 386-C
 ANTIGO-NEOPIT ROAD
 STH 47 LANGLADE COUNTY
 SCALE 1 INCH = 400 FEET

FAP 386-C DS 7828