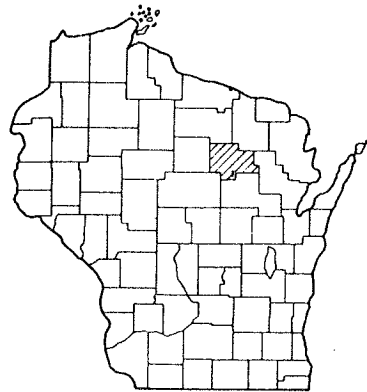


Index of Sheets

Sheet No.	1	Title
Sheet No.	2-3	Typical Cross Sections
Sheet No.	3	Estimate of Quantities
Sheet No.	3	Miscellaneous Quantities
Sheet No.	-	Right of Way Plat
Sheet No.	5-5.3	Plan and Profile Sta. 0+00 to Sta. 92+00
Sheet No.	6-6.7	Standard Details
Sheet No.	-	Drainage Structures
Sheet No.	8-8.25	Cross Sections

Total Sheets = 41



Design Designation

A.D.T.	1972	= 280
A.D.T.	1992	= 350
D.H.V.		= 45
D.		= 60
T.		= 10%
V.		= 50 M.P.H.

Conventional Signs

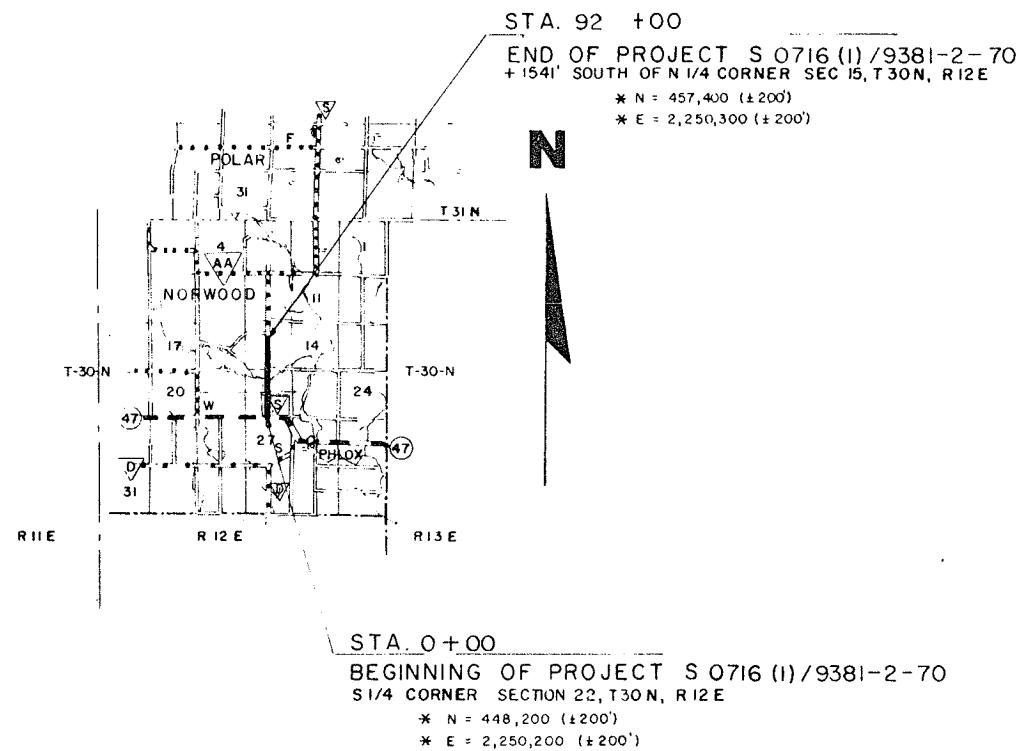
State Line	-----	Culverts in Place	-----
County Line	-----	Culverts Required	-----
Township or Range Line	-----	Drop Inlet	-----
Section Line	-----	Power Pole	-----
New Right of Way Line	-----	Telephone or Telegraph Pole	-----
Present Right of Way Line	-----	Right of Way Markers	-----
Wire Fence	-----	Reference Stake for Hubs Only	-----
Woven	-----	Marsh	-----
Barbed	-----	Hedge	-----
Lot Line	-----	Trees	-----
Corporate or City Limits	-----	Ground Elevation	Datum Line
Property Line	-----	Grade Elevation	Datum Line
Travelled Way or P.E.	-----		
Railroads	-----		
Base of Survey Line	-----		

STATE OF WISCONSIN
DEPARTMENT OF TRANSPORTATION
DIVISION OF HIGHWAYS

PLAN AND PROFILE OF PROPOSED
PHLOX - C.T.H. "AA" ROAD
C.T.H. "S"
LANGLADE COUNTY

PROJECT IDENTIFICATION NUMBER	FEDERAL PROJECT DESIGNATION
9381-2-70	S 0716 (I)

Scales { Plan 1 in. = 100 ft.
Profile Hor. 1 in. = 100 ft. Vert. 1 in. = 10 ft.
Cross Sections Hor 1 in. = 5 FT. Vert. 1 in. = 5 FT.



Layout
Scale 2 MILES

Total Net Length of Centerline = 1.742 Mi.

LANGLADE COUNTY HIGHWAY DEPARTMENT
APPROVED BY *[Signature]*
County Highway Commissioner

REVISED
4-11-72

ORIGINAL PLANS
PREPARED BY
V & M INC.
C.E. 00361
122 8TH ST. SO. WIS. RAPID
DATE 8-18-71
RICHARD G. MILLMAN

STATE OF WISCONSIN
DEPARTMENT OF TRANSPORTATION
DIVISION OF HIGHWAYS

Surveyor V B M INC. Note Book
District Computer V B M INC. M.O. Checker RJS
District Checker RJS Correct
Correct
Date 8/30/72 R.O. Schindler District Eng.
Recommended for Approval: District Eng.
Date 9/19/72 J.C. Her Chief Design Eng.
Approved: State Highway Eng.
Date 9/18/72 J.E. Hickey State Highway Eng.

* COORDINATES ARE SCALED FROM
USGS TOPOGRAPHIC MAP ANTIGO, WIS.
QUADRANGLE FOR IDENTIFICATION ONLY.

RECORD # 20200
LANGLADE COUNTY SURVEYORS OFFICE
DATE FILED: 7/21/01 BY: D. TUSTY

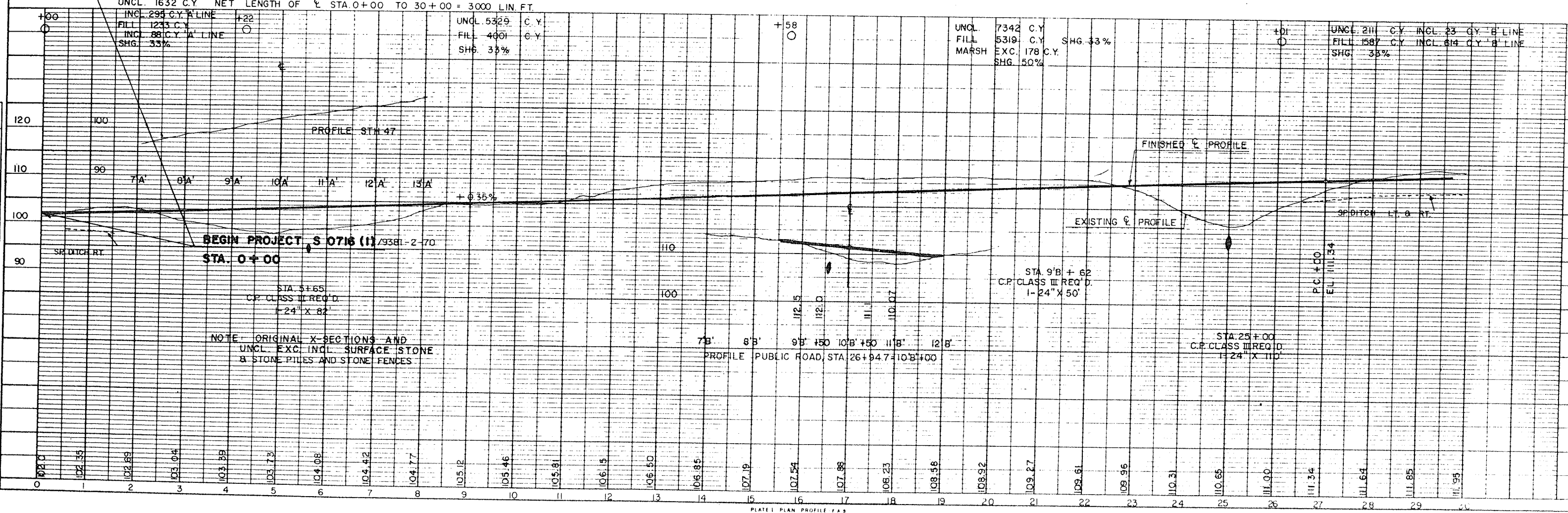
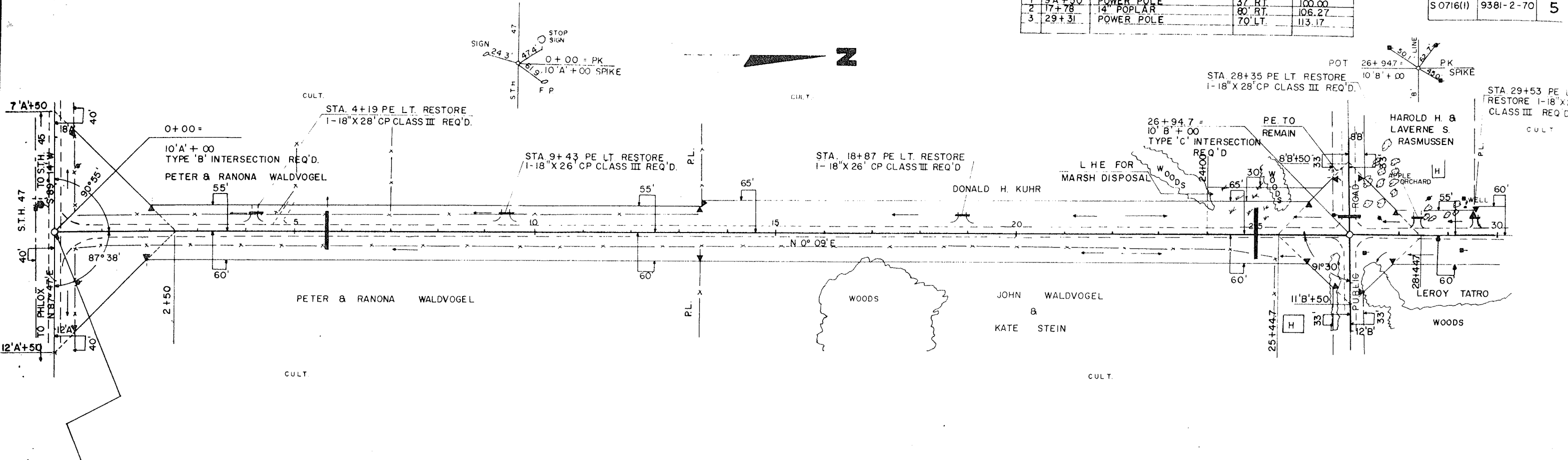
U.S. DEPARTMENT OF TRANSPORTATION
FEDERAL HIGHWAY ADMINISTRATION
REGION 4 WISCONSIN
Approved: Division Eng.

S0716(I)

STA 0+00 TO STA 30+00
17 RIGHT OF WAY MARKER POSTS REQ'D.

BENCH MARKS		NO.	STA.	DESCRIPTION	LOCATION	ELEV.
1	9A+50	POWER POLE	37' RT.		100.00	
2	17+78	14' POPLAR	60' RT.		106.27	
3	29+31	POWER POLE	70' LT.		113.17	

FED. PROJ. DESIGNATION	PROJECT I.D.	SHEET NO.
S 0716(1)	9381-2-70	5

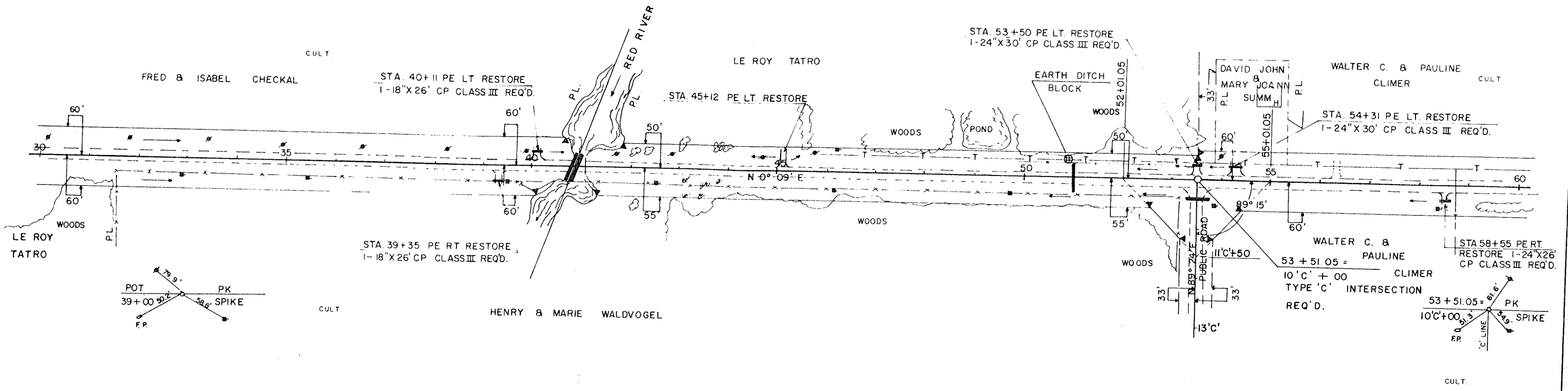


NOTE: ORIGINAL X-SECTIONS AND UNCL. EXC. INCL. SURFACE STONE & STONE PILES AND STONE FENCES

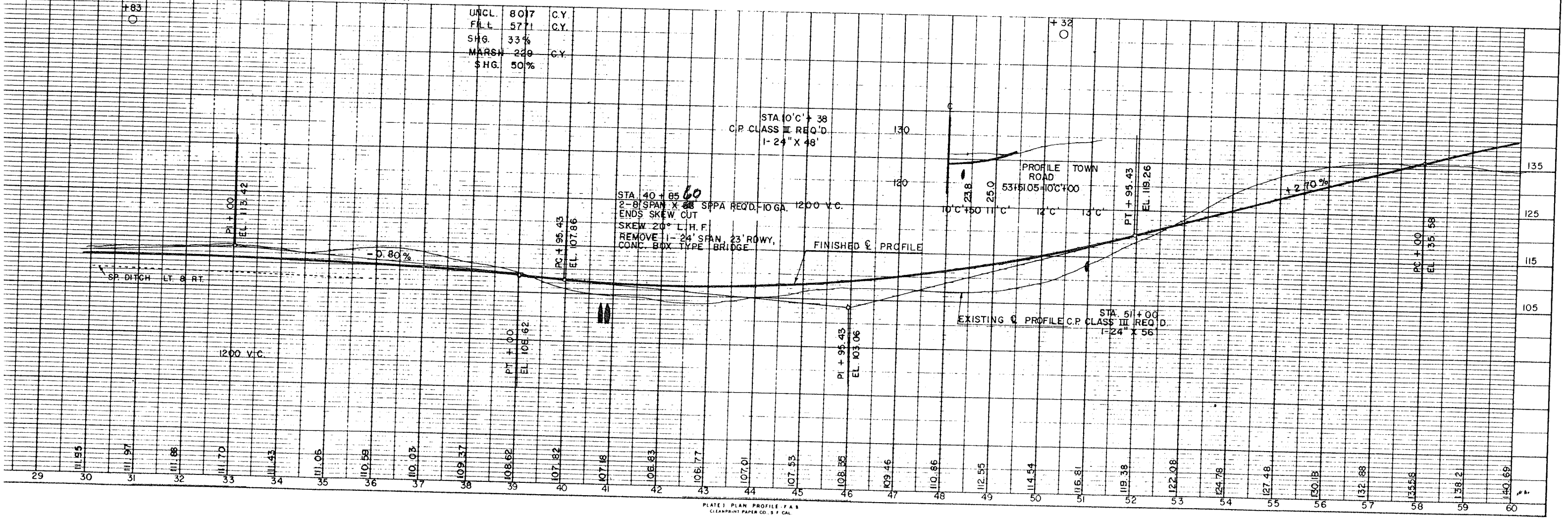
STA 30+00 TO STA. 60+00
10 RIGHT OF WAY MARKER POSTS REQ'D.

BENCH MARKS				
NO.	STA.	DESCRIPTION	LOCATION	ELEV.
4	42+08	18' MAPLE	75' RT	104.84
5	53+36	24' MAPLE	70' LT	124.24

FED. PROJ. DESIGNATION	FED. ACCT. NO.	SHEET NO.	TOTAL SHEETS
S0716(1)	9381-2-70	5.1	



NET LENGTH OF ϕ STA. 30+00 TO STA. 60+00 = 3000 LIN. FT.



UNCL.	80.7	C.Y.
FILL	57.1	C.Y.
SHG.	33%	
MARSH	22.9	C.Y.
SHG.	50%	

STA. 40+00
2-8' SPAN X 28' SPPA REQ'D. 10 GA. 1200' V.C.
ENDS SKEW CUT
SKEW 20° L.H.F.
REMOVE 1-24' SPAN, 23' ROWY,
CONC. BOX TYPE BRIDGE

EXISTING C PROFILE C.P. CLASS III REQ'D.
1-24' X 56'

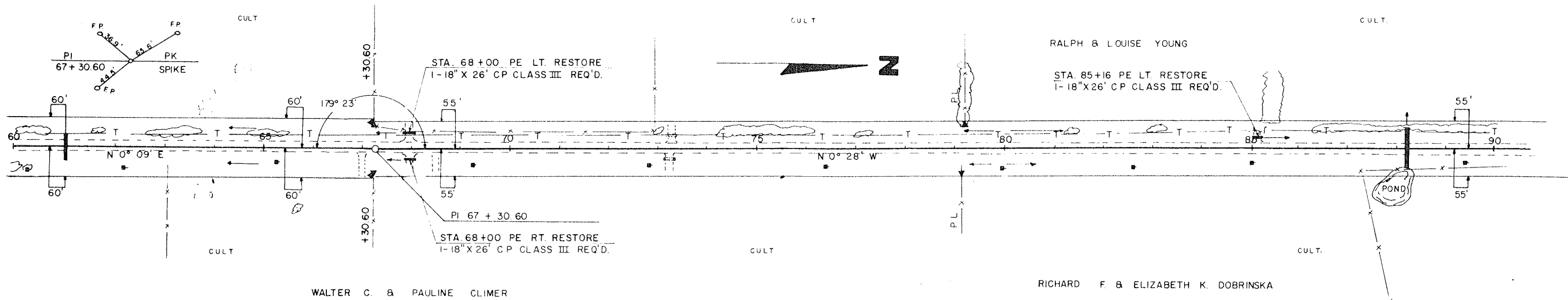
STA. 60+00 TO STA. 90+00
6 RIGHT OF WAY MARKER POSTS REQ'D.

FED PROJ DESIGNATION	PROJECT ID	SHEET NO	TOTAL SHEETS
S 0716(1)	9381-2-70	5.2	

WALTER C. & PAULINE CLIMER

BENCH MARKS

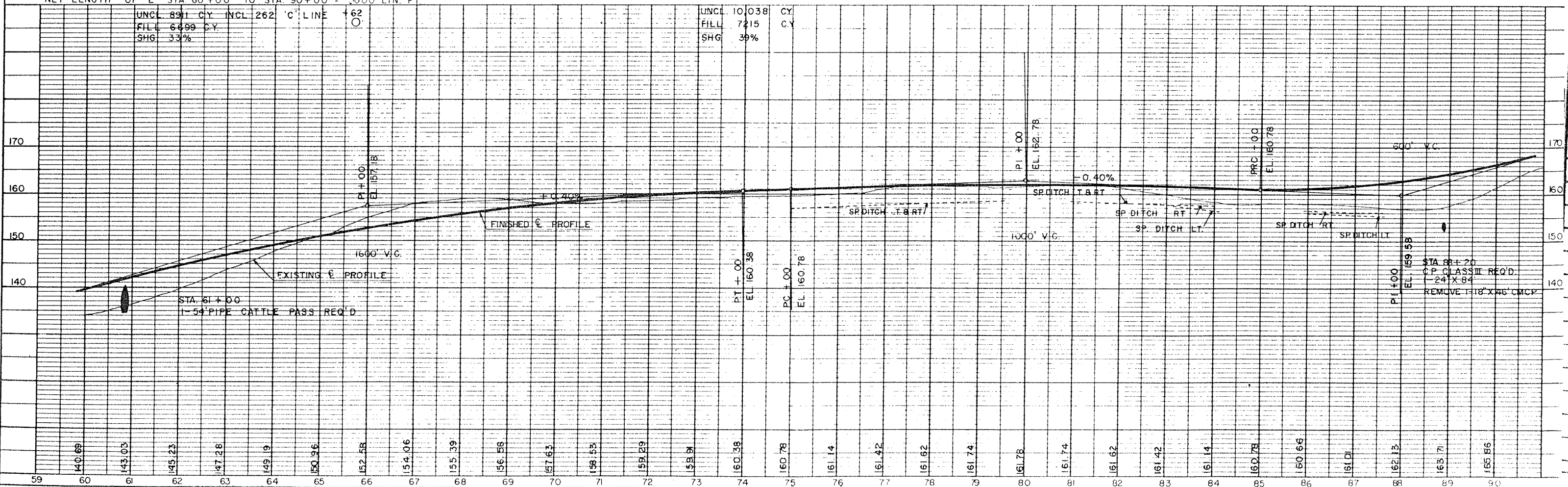
NO.	STA.	DESCRIPTION	LOCATION	ELEV.
6	65+75	12" ELM	120' RT	158.82
7	79+24	4" ELM	90' RT	167.89



NET LENGTH OF \hat{E} STA. 60+00 TO STA. 90+00 = 3000 LIN. FT

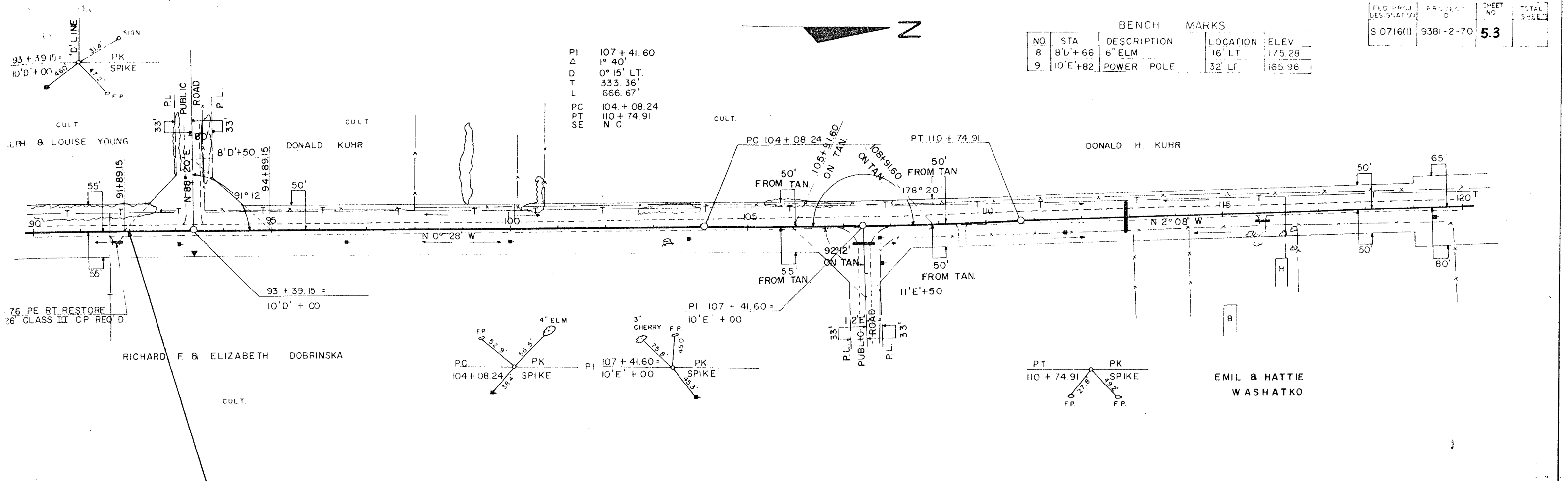
UNCL. 891 CY INCL. 262' C.L. LINE
FILL 6499 CY
SHG 33%

UNCL. 10,038 CY
FILL 7215 CY
SHG 39%



BENCH MARKS			
NO	STA	DESCRIPTION	ELEV
8	8' L + 66	6" ELM	175.28
9	10' E + 82	POWER POLE	165.96

PI 107 + 41.60
 Δ 1° 40'
 D 0° 15' LT.
 T 333.36'
 L 666.67'
 PC 104 + 08.24
 PT 110 + 74.91
 SE N C



NETLENGTH OF \bar{E} STA. 90+00 TO STA. 92+00 = 2.00 LIN. FT

