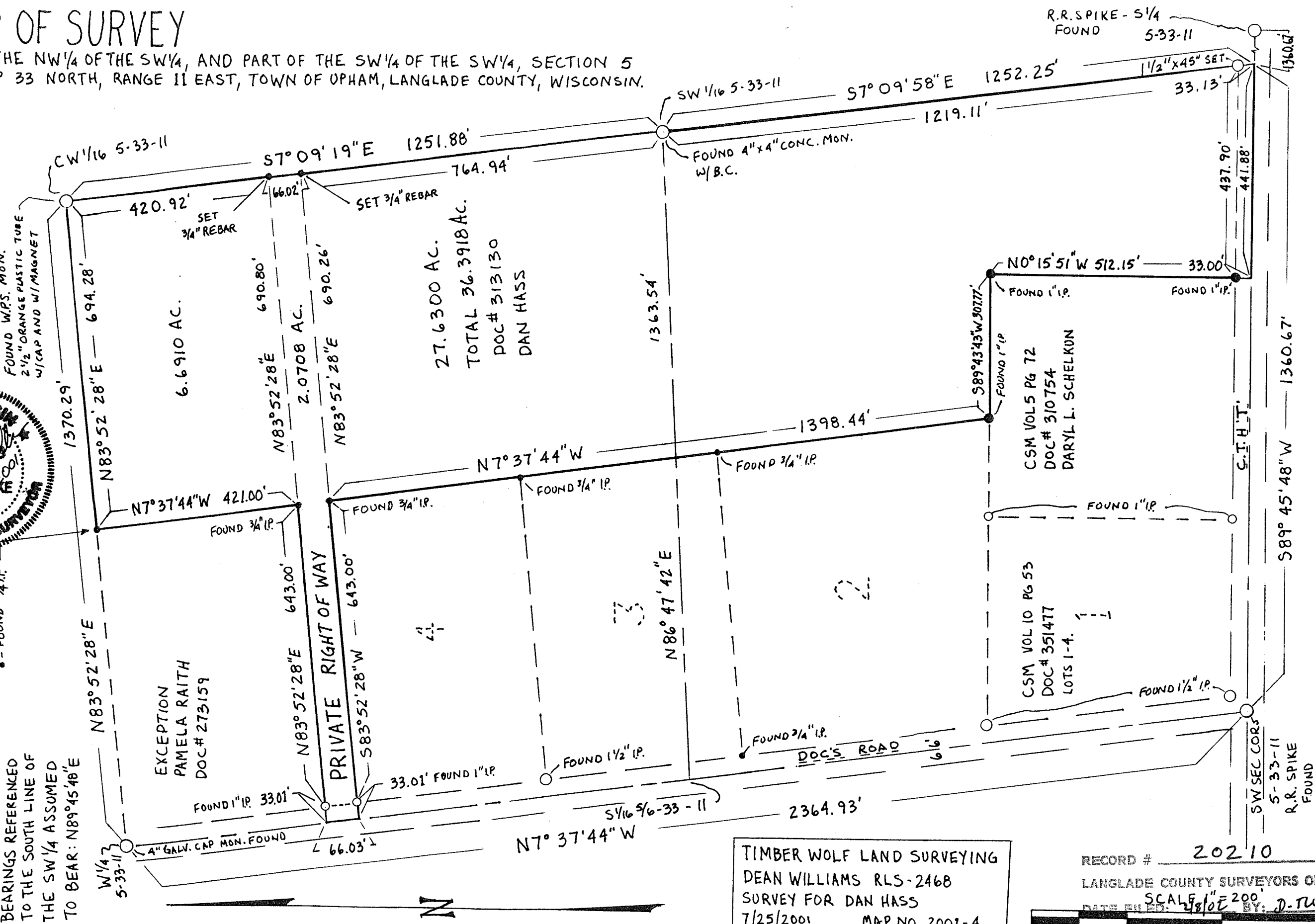


MAP OF SURVEY

PART OF THE NW 1/4 OF THE SW 1/4, AND PART OF THE SW 1/4 OF THE SW 1/4, SECTION 5
TOWNSHIP 33 NORTH, RANGE 11 EAST, TOWN OF UPHAM, LANGLADE COUNTY, WISCONSIN.



BEARINGS REFERENCED
TO THE SOUTH LINE OF
THE SW 1/4 ASSUMED
TO BEAR: N89°45'48"E



EXCEPTION
PAMELA RAITH
DOC# 273159

PRIVATE RIGHT OF WAY

27.6300 AC.
TOTAL 36.3918 AC.
DOC# 313130
DAN HASS

CSM VOL 5 PG 72
DOC# 310754
DARYL L. SCHELKUN

CSM VOL 10 PG 53
DOC# 351477
LOTS 1-4.

TIMBER WOLF LAND SURVEYING
DEAN WILLIAMS RLS-2468
SURVEY FOR DAN HASS
7/25/2001 MAP NO. 2001-4

RECORD # 20210
LANGLADE COUNTY SURVEYORS OFFICE
SCALE 1" = 200'
DATE FILED: 7/28/02 BY: D. TRUSTY

