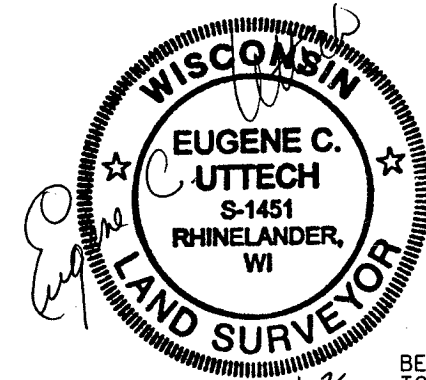


SECTION 17 & 18, T.32N., R.11E.,
TOWN OF NEVA, LANGLADE COUNTY, WISCONSIN



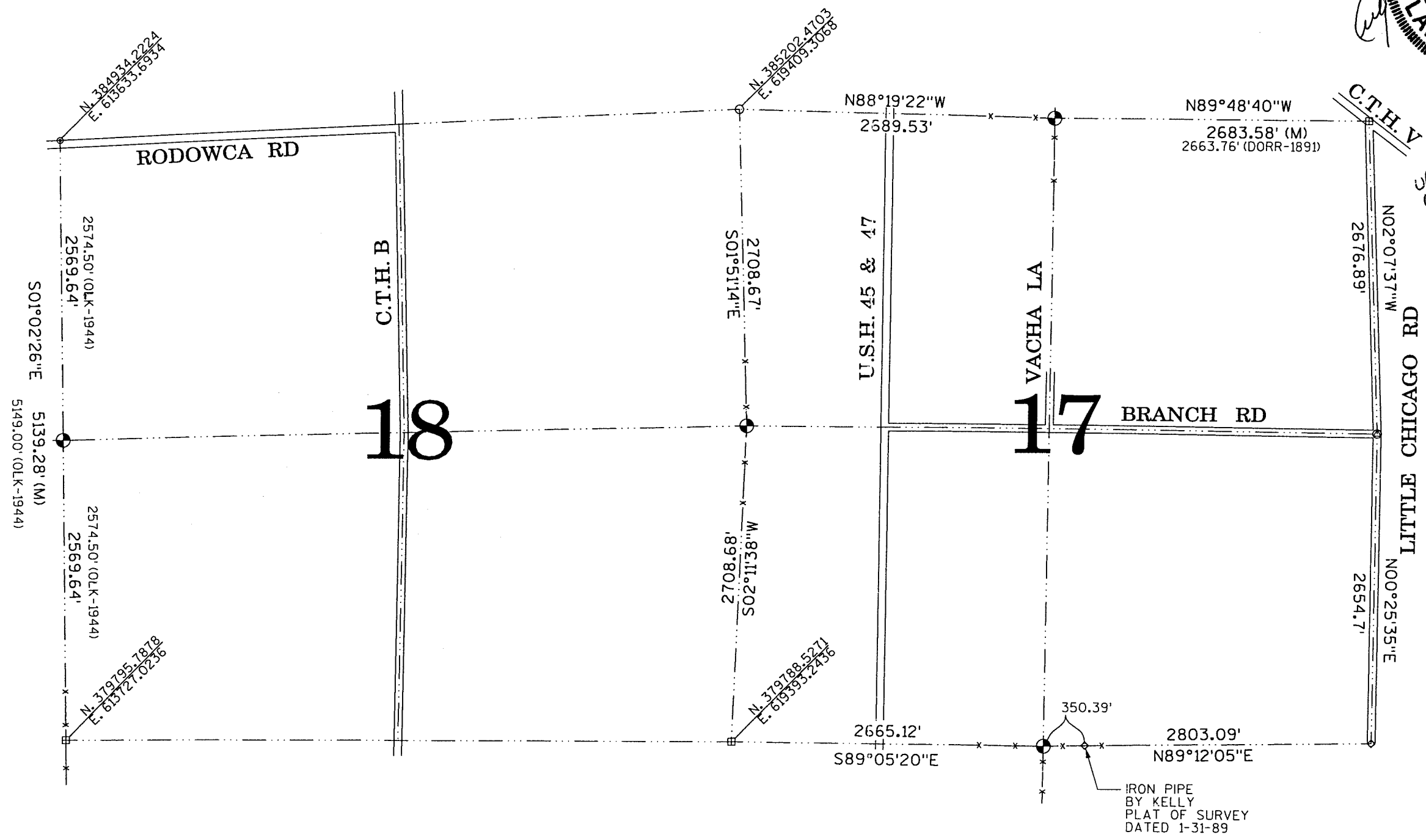
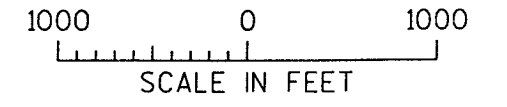
BEARINGS REFERENCED
TO COUNTY COORDINATE
SYSTEM FOR TOWN OF NEVA

8/22/02
UPDATED: 9.05.02
UPDATED: 9.12.02

LEGEND

- ⊕ 2" X 30" IRON PIPE WITH 3/4" DIA. BRASS CAP, SET
- ⊞ BRASS CAP MONUMENT, FOUND
- ⊙ RAILROAD SPIKE, FOUND
- ◇ 1" IRON PIPE, FOUND
- 1/4" IRON ROD, FOUND
- IRON PIPE, FOUND
- x— FENCE LINE
- (DORR-1887) B.F. DORR SURVEY FIELD NOTES ON FILE COUNTY SURVEYOR'S OFFICE
- (M) MEASURED

I, EUGENE C. UTTECH, REGISTERED LAND SURVEYOR OF THE STATE OF WISCONSIN DO HEREBY CERTIFY THIS IS TRUE AND CORRECT TO THE BEST OF MY KNOWLEDGE AND BELIEF.



RECORD # 20222
LANGLADE COUNTY SURVEYORS OFFICE
DATE FILED: 9/20/02 BY: D. TLUSTY

LANGLADE COUNTY
TOWN OF NEVA
REMONUMENTATION
PROJECT

MSA
PROFESSIONAL SURVEYORS

TRANSPORTATION • MUNICIPAL
DEVELOPMENT • ENVIRONMENTAL
1315 N. Stevens St., Rhinelander, WI 54501
715-362-3244 • 1-800-4-1-7854 Fax: 715-362-4116
© MSA PROFESSIONAL SERVICES

DRAWN BY: CAR	DATE: 8/02	SHEET: 1 of 1
CHECKED BY: ECU	SCALE: AS SHOWN	FILE NO.: 980383A