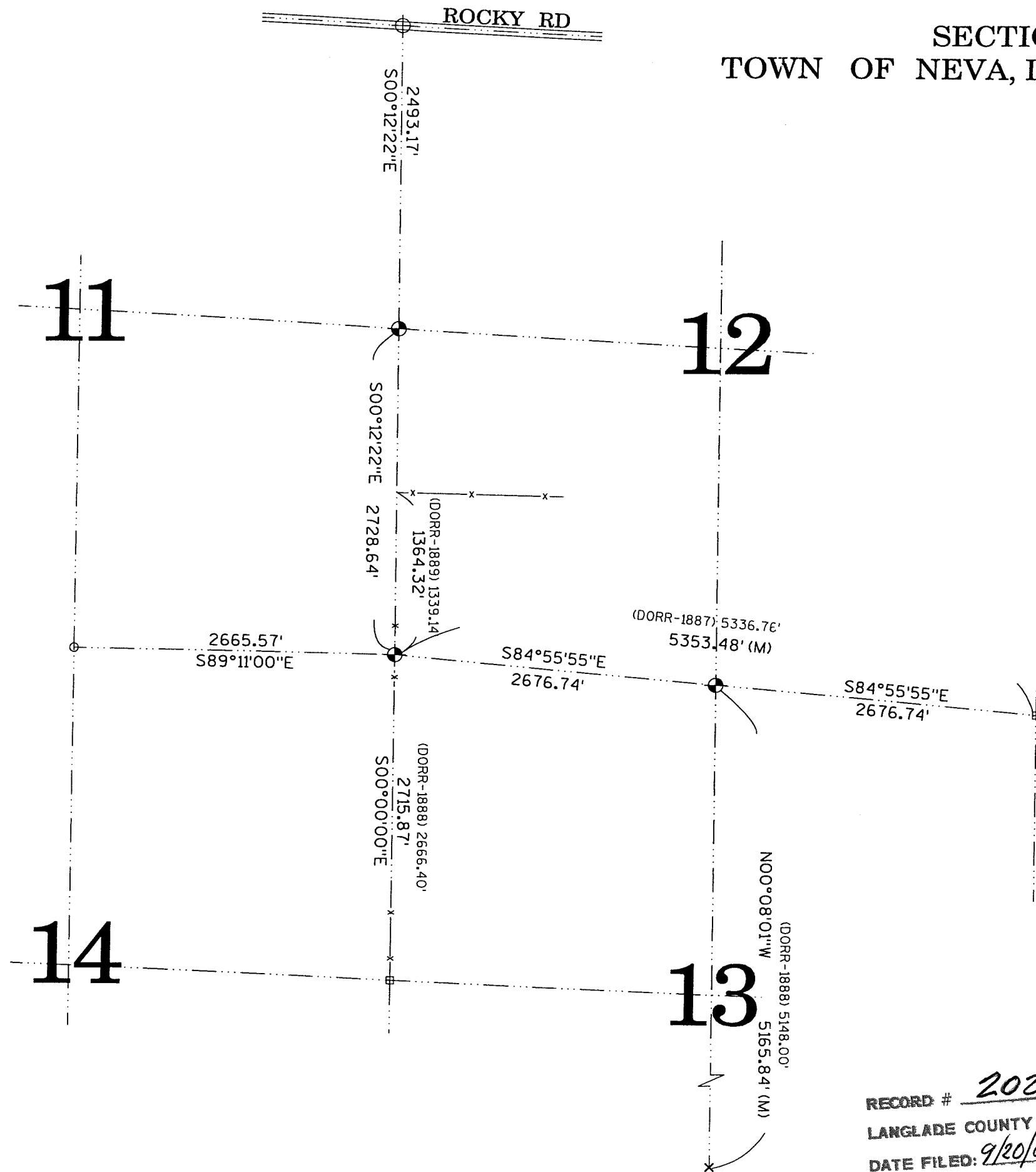


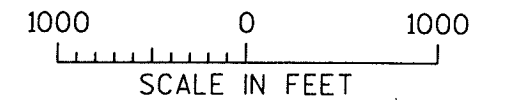
SECTION 12, T.32N., R.11E.,  
TOWN OF NEVA, LANGLADE COUNTY, WISCONSIN



BEARINGS REFERENCED  
TO COUNTY COORDINATE  
SYSTEM FOR TOWN OF NEVA

LEGEND

- ⊕ 2" X 30" IRON PIPE WITH 3/4" DIA. BRASS CAP, SET
- ⊕ BRASS CAP MONUMENT, FOUND
- 1/4" IRON ROD, FOUND
- ⊕ COUNTY MONUMENT, FOUND
- x CALCULATED POINT
- x- FENCE LINE
- (DORR-1887) B.F. DORR SURVEY FIELD NOTES ON FILE COUNTY SURVEYOR'S OFFICE
- (M) MEASURED



RECORD # 20223  
LANGLADE COUNTY SURVEYORS OFFICE  
DATE FILED: 9/20/02 BY: D. Tuszy  
I, EUGENE C. UTTECH, REGISTERED LAND SURVEYOR OF THE STATE OF WISCONSIN-90-HEREBY CERTIFY THIS IS TRUE AND CORRECT TO THE BEST OF MY KNOWLEDGE AND BELIEF.

LANGLADE COUNTY  
TOWN OF NEVA  
REMONUMENTATION  
PROJECT

**MSA** PROFESSIONAL SERVICES  
TRANSPORTATION • MUNICIPAL  
DEVELOPMENT • ENVIRONMENTAL  
1835 N. Stevens St. Rhinelander, WI 54501  
715-362-3244 1-800-844-7854 Fax: 715-362-4116  
© MSA PROFESSIONAL SERVICES

DRAWN BY CAR DATE 8/02 SHEET 1 of 1  
CHECKED BY ECU SCALE AS SHOWN FILE NO. 980383B