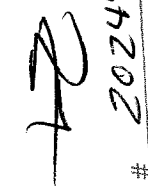


PĂLÇAÔTĂ AOAFĂ ASĂU?RIVOEAY

OPTION 1  
IF MEASURED  
PLAT FROM  
SECTION LINE.

RECORD # 20244  
LANGLADE COUNTY SURVEYORS OFFICE  
DATE FILED: 2/21/04 BY: P. TUSTY

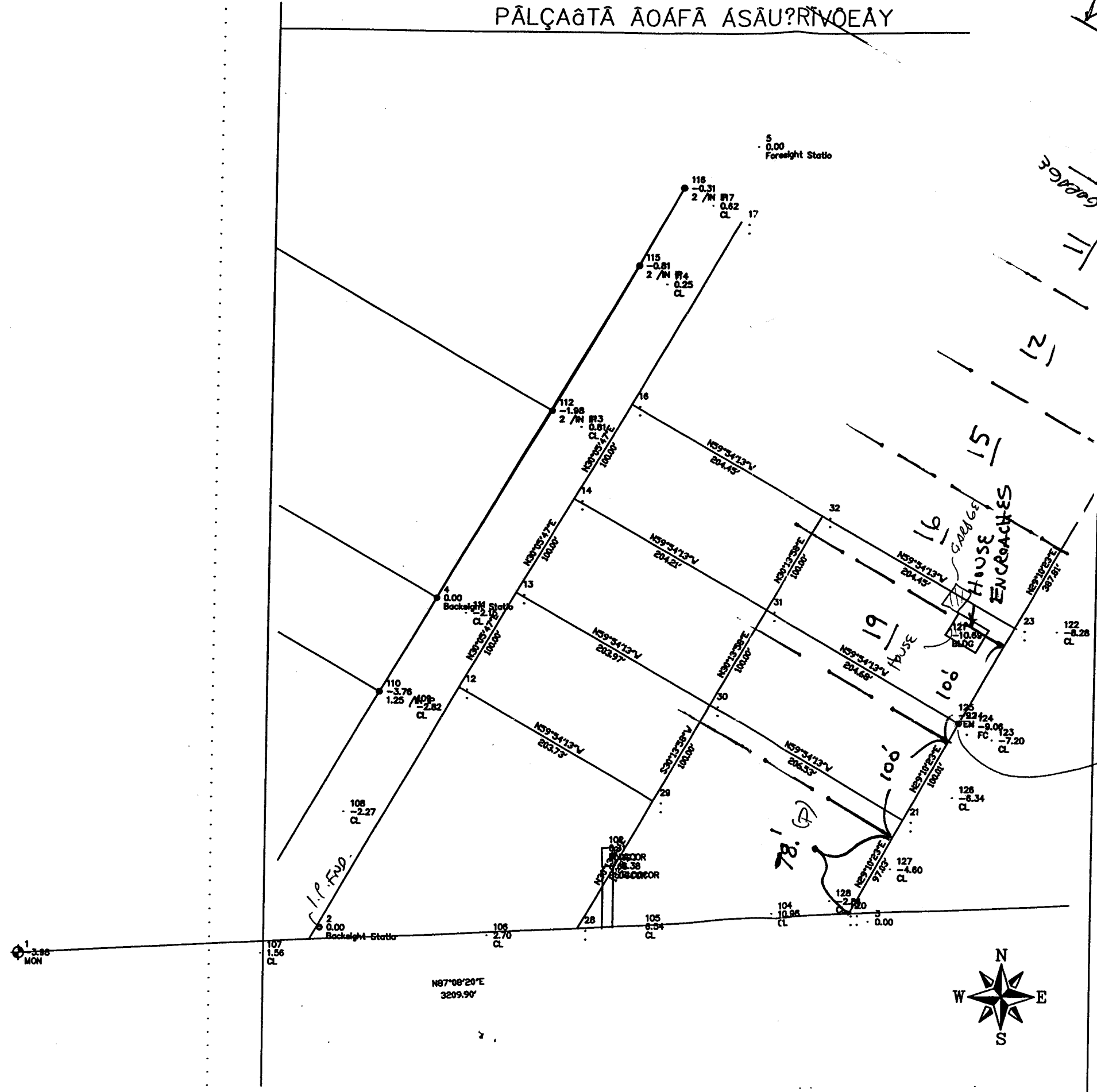


1-29-04  
MAP REVISED TO  
SHOW GARAGES ON  
LOTS 7+8.  
Eq.

#22 I.P.FND.  
20577.32 (E)  
10185.83 (N)

SECTION LINE

(P) = PLATED





PROFESSIONAL SERVICES  
TRANSPORTATION • MUNICIPAL  
DEVELOPMENT • ENVIRONMENTAL

RECEIVED JAN 3 10 2004  
LETTER OF TRANSMITTAL

DATE: 1-29-04	JOB NO.
ATTENTION:	
RE:	Summit Lake

TO: DAVE TRISTY

WE ARE SENDING YOU: \_\_\_\_\_

Attached     Copy     Change Order     Contract     Computer Disk  
 Shop Drawings     Prints/Plans     Specifications     Estimates     Other (See Below)

COPIES	DATE	DESCRIPTION

THESE ARE TRANSMITTED AS CHECKED BELOW:

For Approval     Approved as Submitted  
 For Your Use     Approved as Noted  
 As Requested     Returned for Corrections  
 For Review and Comment     For Review and Signature  
 For Bids Due   

SHOP DRAWINGS	
<input type="checkbox"/>	Reviewed with No Comments
<input type="checkbox"/>	Reviewed with Comments as Noted
<input type="checkbox"/>	Amend And Resubmit
<input type="checkbox"/>	Rejected (See Attached comments)

REMARKS:

ENCLOSED IS REVISED SKETCH MAP LOCATING THE GARAGES ON THE COLLECT LOTS 7+8. NOTHING ELSE HAS CHANGED.

COPY TO:

Eugene C. Uttech, Project Manager

Offices in Illinois, Iowa, Minnesota, and Wisconsin  
1835 North Stevens Street, Rhineland, WI 54501  
(715) 362-3244 (800) 844-7854  
FAX: (715) 362-4116 WEB ADDRESS: www.msa-ps.com