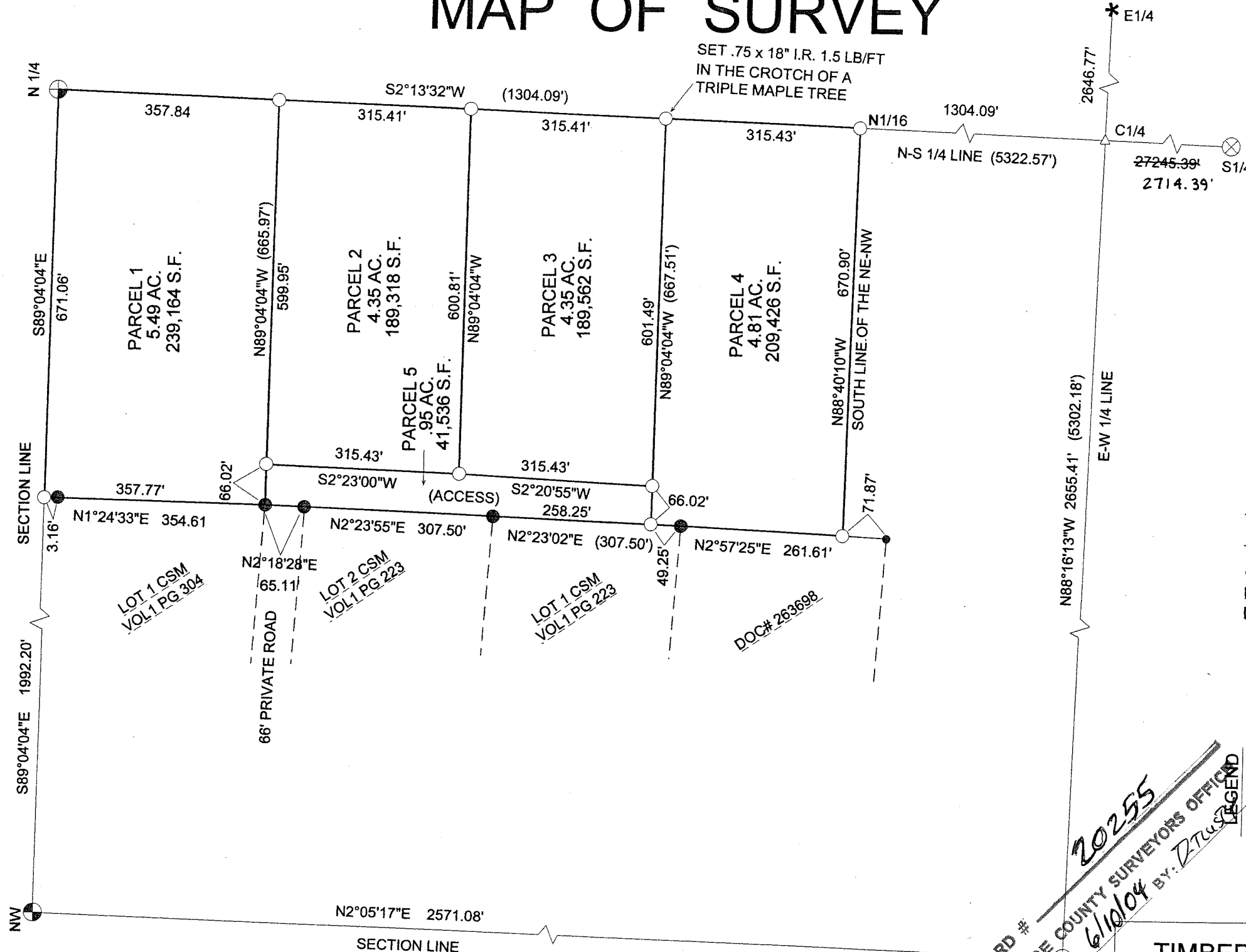


MAP OF SURVEY

**TIMBER WOLF
LAND SURVEYING**
DEAN WILLIAMS RLS-2468
715-275-4322



SURVEYORS CERTIFICATE

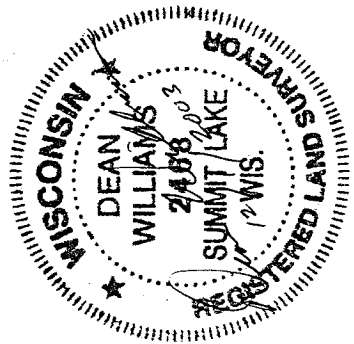
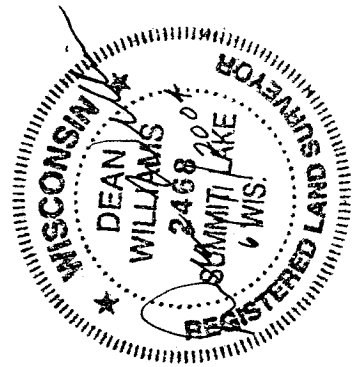
I DEAN A. WILLIAMS RLS-2468 HEREBY CERTIFY THAT I HAVE SUBDIVIDED, SURVEYED AND PLATTED PART OF THE NE 1/4-NW 1/4, EXCEPT LOT 1 CSM VOL 1 PAGE 304, AND LOTS 1 & 2 CSM VOLUME 1 PAGE 223 AND DOCUMENT # 263698, IN SECTION 16, T.31N, R.14E TOWN OF WOLF RIVER, LANGLADE COUNTY, WISCONSIN.

SEPARATE DESCRIPTIONS FOR PARCELS 1 THROUGH 5 HAVE BEEN PRESENTED

TO LAND OWNER. THESE PARCELS THAT WERE CREATED BY THIS MAP, ARE FOR THE INTENDED SOLE USE OF DESCRIPTIONS FOR WILL DISPERSMENT.

- LEGEND
- - - - - FOUND 1.05" I.P.
 - - - - - - FOUND 1.875" I.P.
 - ◐ - - - - - FOUND .75" I.R.
 - * - - - - - FOUND BERNTSEN NAIL
 - ⊕ - - - - - FOUND 3.5" ALUM. MON.
 - ⊗ - - - - - FOUND PK NAIL
 - ⊕ - - - - - SET PK NAIL
 - △ - - - - - CALC. COR.
 - - - - - - SET .75" X 30" I.R. 1.5 LBS/FT
 - () - - - - - TOTAL DISTANCE

REVISED

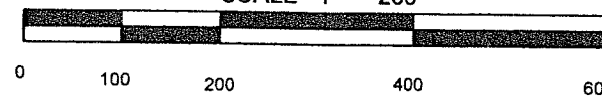


BEARINGS REFERENCED TO THE NORTH LINE OF THE
NW 1/4 ASSUMED TO BEAR S 89°04'04" E



DRAWN BY JAMES GARDNER

SCALE 1" = 200'



RECORD # 20255
LANGLADE COUNTY SURVEYORS OFFICE
NOTE FILED: 6/10/04 BY: JZT

TIMBER WOLF LAND SURVEYING

DEAN WILLIAMS RLS - 2468

FLORENCE SIMMONS

12-1-2003

SCALE 1" = 200'

MAP# 2003-14