

MAP OF SURVEY

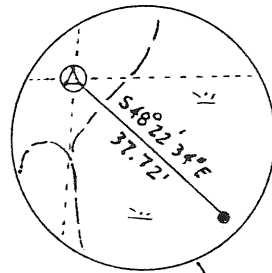
REVISED 10/21/2003

LEGEND

- ⊕ - SET ~~60~~ NAIL SET 1.5" x 36" I.P. 4.55 LBS./FT.
- ⊙ - FOUND 1.66" B.C.I.P.
- ⊕ - FOUND 2.375" B.C.I.P.
- ⊕ - FOUND 3.5" B.C. IN CONC.
- - SET 1.05" x 18" I.P. 1.13 LBS./FT.
- - SET 2.875" x 48" I.P. 5.79 LBS./FT.
- - SET 1.5" x 60" I.R. 6 LBS./FT.
- - FOUND 2.375" B.C.I.P.

NOTE: BY RETRACING TOM ARNOTT'S TRAVERSE, THE S 1/4 CORNER OF 14-34-12 WAS FOUND TO BE MOVED. FOUND MONUMENT WAS LOCATED FURTHER SOUTHEAST INTO SWAMP AND CLOSER THAN 65' TO LAKE. WILLIAM F KELLY'S CORNER FORM CALL WAS 100' TO LAKE. ALL BT'S GONE.

DETAIL

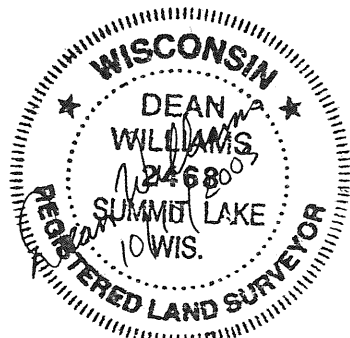


POSSIBLE ADVERSE POSSESSION RIGHTS TO OLD MONUMENT LOCATION → NANCY SKIDMORE (KEITH &)



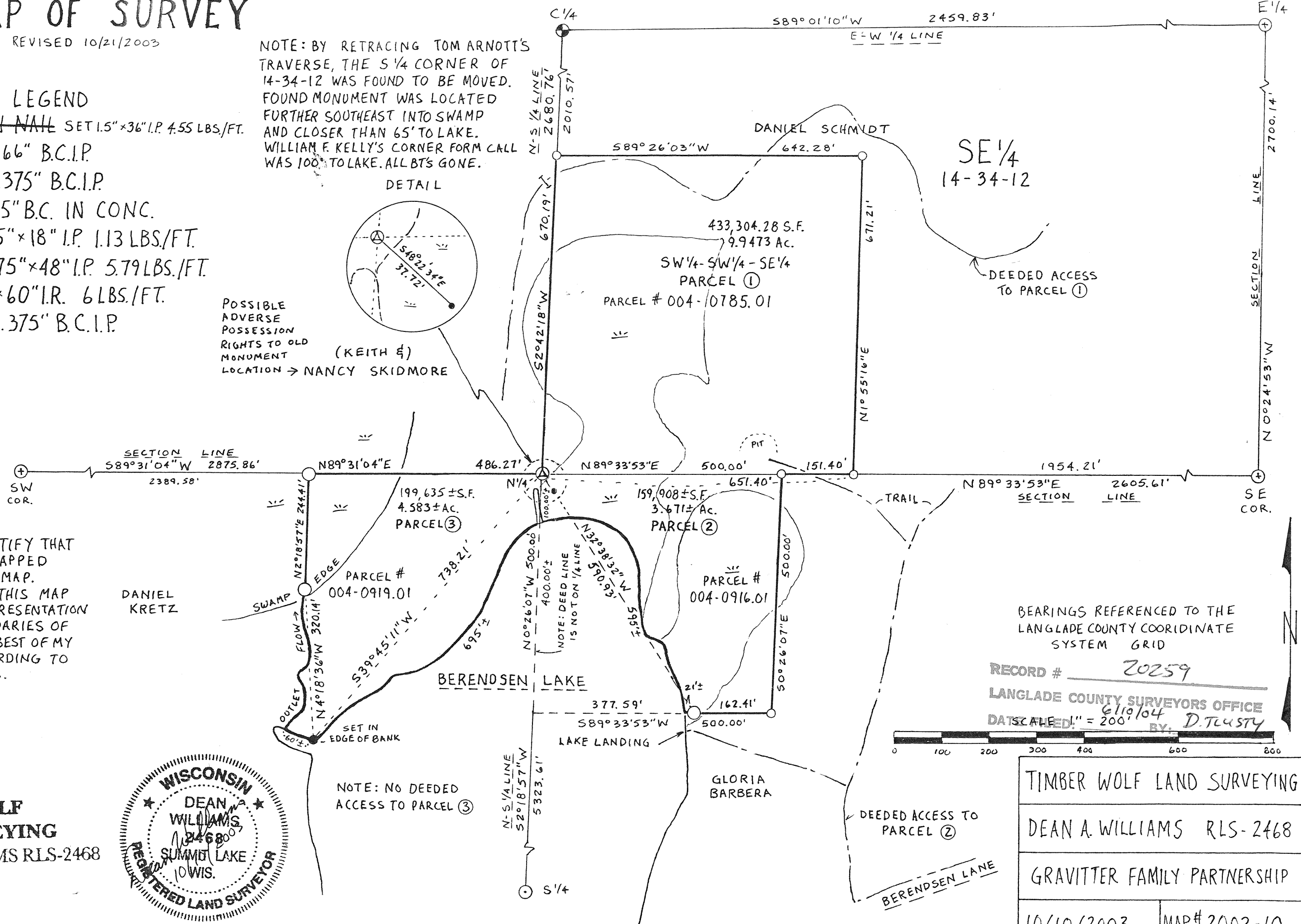
I DEAN A. WILLIAMS CERTIFY THAT I HAVE SURVEYED AND MAPPED SHOWN PARCELS ON THIS MAP. I FURTHER CERTIFY THAT THIS MAP IS A TRUE AND CORRECT REPRESENTATION OF ALL THE EXTERIOR BOUNDARIES OF THE LAND SURVEYED TO THE BEST OF MY KNOWLEDGE AND BELIEF ACCORDING TO OFFICIAL RECORDS.

DANIEL KRETZ



TIMBER WOLF LAND SURVEYING
 DEAN WILLIAMS RLS-2468
 715-275-4322

NOTE: NO DEEDED ACCESS TO PARCEL ③



BEARINGS REFERENCED TO THE LANGLADE COUNTY COORDINATE SYSTEM GRID

RECORD # 20259
 LANGLADE COUNTY SURVEYORS OFFICE
 DATED: 6/19/04 BY: D. TUSTY



TIMBER WOLF LAND SURVEYING	
DEAN A. WILLIAMS RLS-2468	
GRAVITTER FAMILY PARTNERSHIP	
10/10/2003	MAP# 2003-10