

# MAP OF SURVEY

## SURVEYORS CERTIFICATE

I DEAN A. WILLIAMS RLS-2468 HEREBY CERTIFY THAT I HAVE SUBDIVIDED, SURVEYED AND PLATTED BY THE ORDER OF JAMES SHIBUSKI THE NORTH LINE AND THE EAST LINE OF THE SW1/4-SW1/4, SEC. 12-T32N-R10E, AND THE EAST LINE OF THE NW1/4-NW1/4, SEC. 13-T32N-R10E, TOWN OF PECK, LANGLADE COUNTY WISCONSIN

BEARINGS REFERENCED TO THE LANGLADE COUNTY COORDINATE SYSTEM

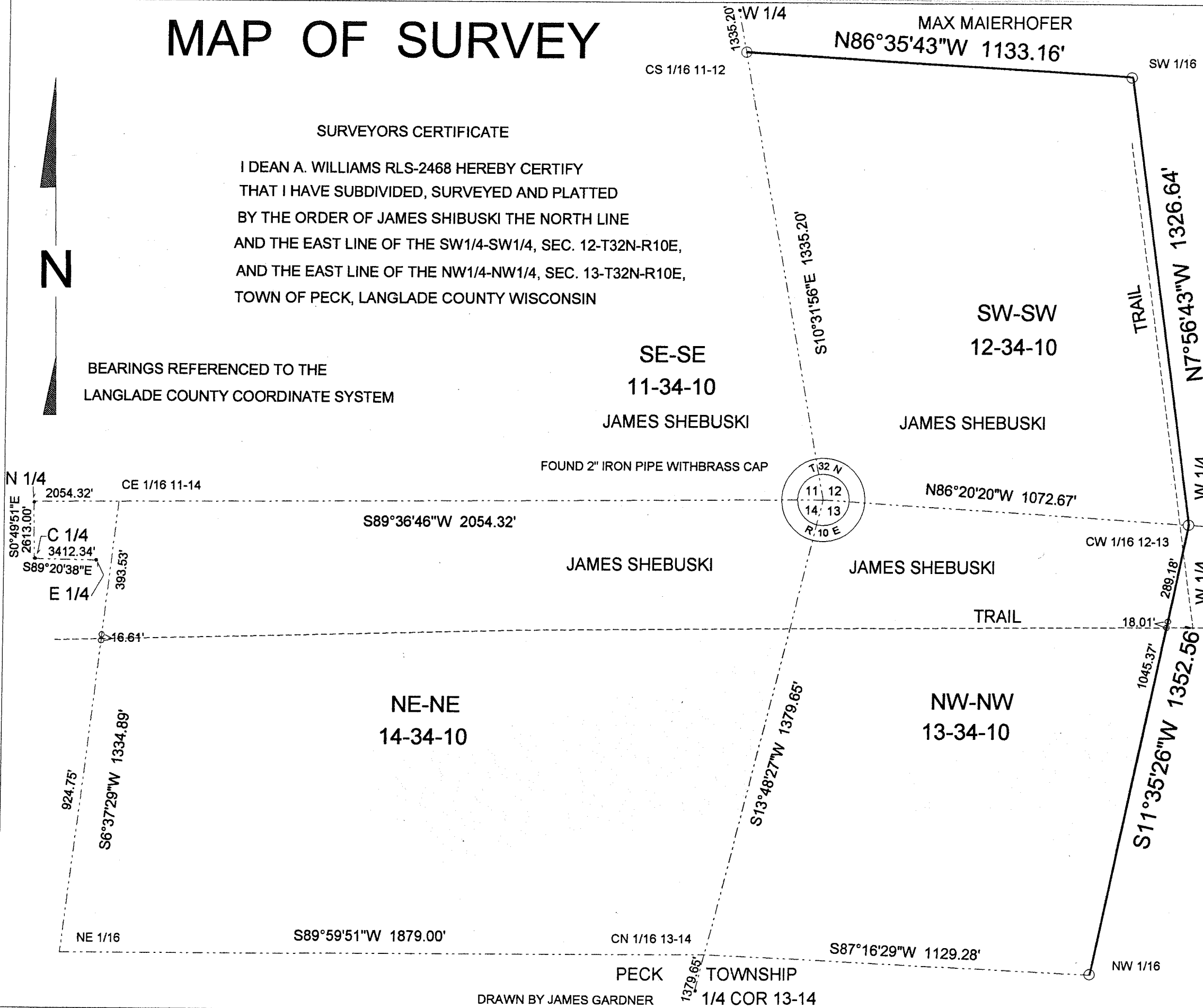
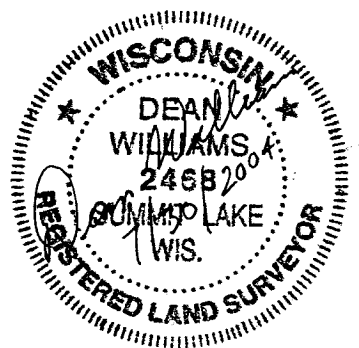


### LEGEND

○, ○ SET 1.3" X 24" I.P. 1.68LBS/FT MARKED WITH 5' T-POST

MAX MAIERHOFER

NOTE: ALL PUBLIC LAND SURVEY CORNER LOCATION INFORMATION OBTAINED FROM THE COUNTY SURVEYOR.



RECORD # 20267  
 LANGLADE COUNTY SURVEYORS OFFICE  
 DATE FILED: 8/2/04 BY: D. TLUSTY  
 SCALE 1" = 300'

TIMBER WOLF LAND SURVEYING	
DEAN WILLIAMS RLS - 2468	
JAMES SHEBUSKI	7-21-2004
SCALE 1" = 300'	MAP# 2004-19

DRAWN BY JAMES GARDNER

PECK TOWNSHIP  
 1/4 COR 13-14