

INDEX OF SHEETS

- EE NO. 1 TITLE
- EE NO. 2 TYPICAL CROSS SECTIONS
- EE NO. 2 ESTIMATE OF QUANTITIES
- EE NO. 2 MISCELLANEOUS QUANTITIES
- EE NO. - RIGHT OF WAY PLAT
- EE NO. 3-9 PLAN AND PROFILE STA. 33+29.0 TO STA. 218+71.0
- EE NO. 10-14 STANDARD DETAILS
- EE NO. - DRAINAGE STRUCTURES
- EE NO. 16-46 CROSS SECTIONS

COUNTY AND HIGHWAY	ROUTE AND SECTION	CLASS AND AGREEMENT		FEDERAL DIVISION OFFICE	SHEET NUMBER	TOTAL SHEETS
		STATE	FEDERAL			
34.6	850.0		EJ.2	WIS. 5N	1	45

STATE OF WISCONSIN  
STATE HIGHWAY COMMISSION OF WISCONSIN

PLAN AND PROFILE OF PROPOSED  
MARATHON COUNTY LINE — ANTIGO ROAD  
COUNTY TRUNK HIGHWAY "Y"

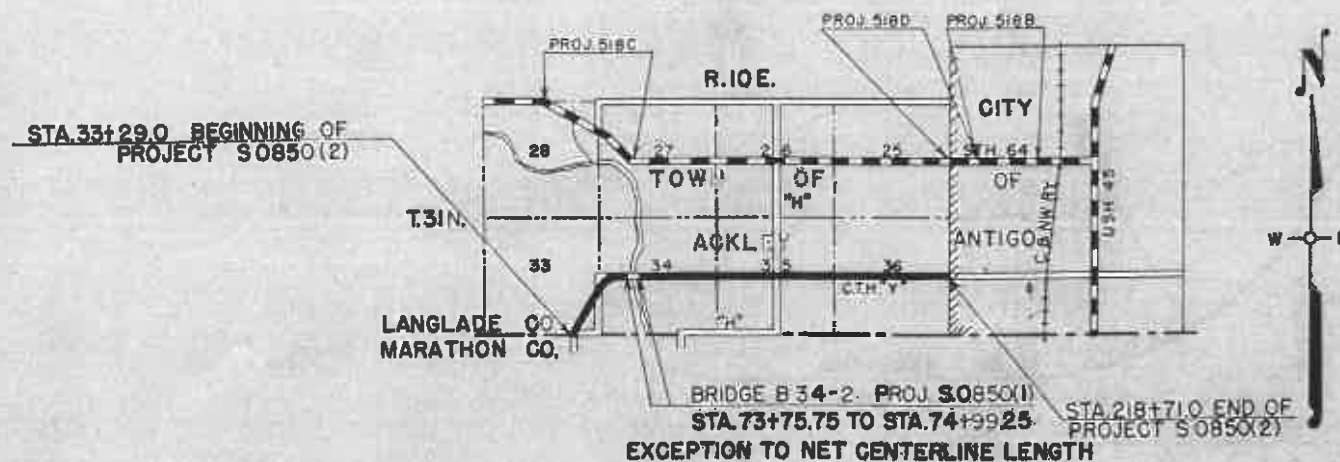
LANGLADE COUNTY  
PROJECT S 0850 (2)

BEGINNING AT A POINT 1,150 FEET WEST OF THE SOUTHEAST CORNER OF SECTION 33, T.31N., R.10E. AND EXTENDING NORTHERLY AND EASTERLY TO THE EAST QUARTER CORNER OF SECTION 36, T.31N., R.10E.

SCALES  
PLAN 1 IN. = 100 FT.  
PROFILE HOR. 1 IN. = 100 FT. VERT. 1 IN. = 10 FT.  
CROSS SECTIONS HOR. 1 IN. = 5 FT. VERT. 1 IN. = 5 FT.

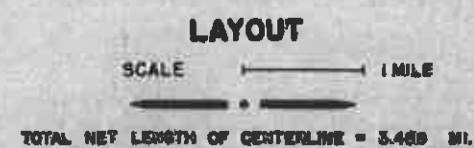


①  
Marathon Cty line to Western Ave



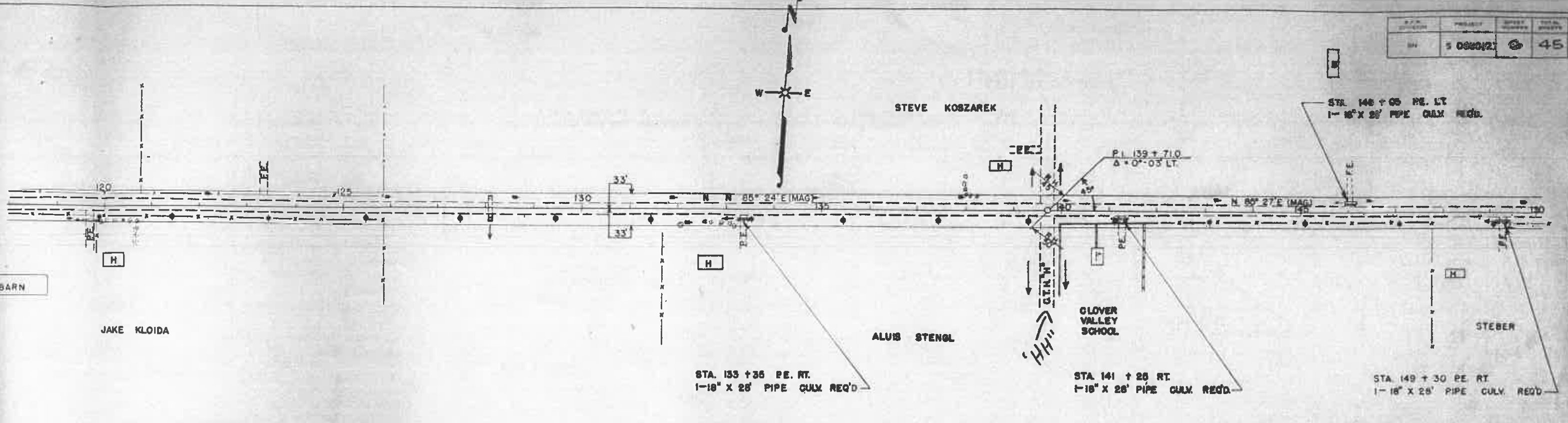
CONVENTIONAL SIGNS

- |                         |                               |          |
|-------------------------|-------------------------------|----------|
| STATE LINE              | GULVERTS IN PLACE             | [Symbol] |
| COUNTY LINE             | GULVERTS REQUIRED             | [Symbol] |
| RANGE OR RANGE LINE     | DROP INLET                    | [Symbol] |
| TOWNSHIP LINE           | POWER POLE                    | [Symbol] |
| RIGHT OF WAY LINE       | TELEPHONE OR TELEGRAPH POLE   | [Symbol] |
| LEFT RIGHT OF WAY LINE  | RIGHT OF WAY MARKERS          | [Symbol] |
| WEDGE { WOVEN           | REFERENCE STAKE FOR MIBS ONLY | [Symbol] |
| BARBED                  | MARSH                         | [Symbol] |
| LINE                    | HEDGE                         | [Symbol] |
| SEPARATE OR CITY LIMITS | TREES                         | [Symbol] |
| PROPERTY LINE           | GROUND ELEVATION              | [Symbol] |
| PAVEMENT WAY OR P.E.    | GRADE ELEVATION               | [Symbol] |
| LANGLADE                |                               |          |
| LINE OR SURVEY LINE     |                               |          |



RECORD # 20280  
LANGLADE COUNTY SURVEYORS OFFICE  
DATE FILED 2/17/2020 D.T.

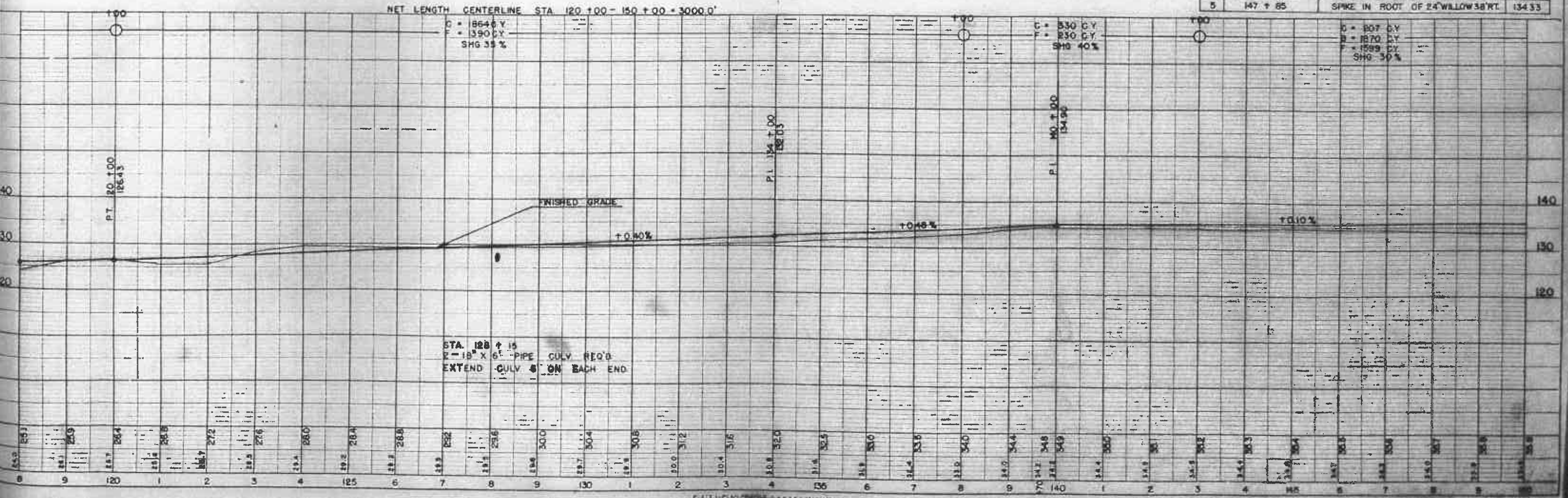
STATE HIGHWAY COMMISSION OF WISCONSIN MADISON, WIS.	DEPARTMENT OF COMMERCE BUREAU OF PUBLIC ROADS
SURVEYOR: A.M.H. - NOTE BOOK, PLAN, RECORDS DIVISION COMPUTER: C.W. M.G. CHIDDER DIVISION CHECKER: M.P.M. - CORRECT	RECOMMENDED FOR APPROVAL:
DATE: 8/1/51 DIVISION ENGINEER: [Signature]	DISTRICT ENGINEER: _____ DATE: _____
APPROVED: [Signature] DATE: 8/14/51 STATE HIGHWAY ENGINEER	APPROVED: _____ DIVISION ENGINEER: _____ DATE: _____



NOTE: REMOVE ALL EXISTING CULVERTS ON THIS SHEET EXCEPT STA. 128+15

BENCH MARKS

NO	STATION	DESCRIPTION	ELEV
4	133+08	SPIKE IN ROOT OF 12" MAPLE 37' LT.	130.28
5	147+85	SPIKE IN ROOT OF 24" WILLOW 38' RT.	134.33



NET LENGTH CENTERLINE STA. 120+00 - 150+00 = 3000.0'

C = 18646 Y  
 F = 3900 Y  
 SHG 35%

T.C. = 530 C.Y.  
 230 C.Y.  
 SHG 40%

D = 807 C.Y.  
 B = 1870 C.Y.  
 F = 1589 C.Y.  
 SHG 30%

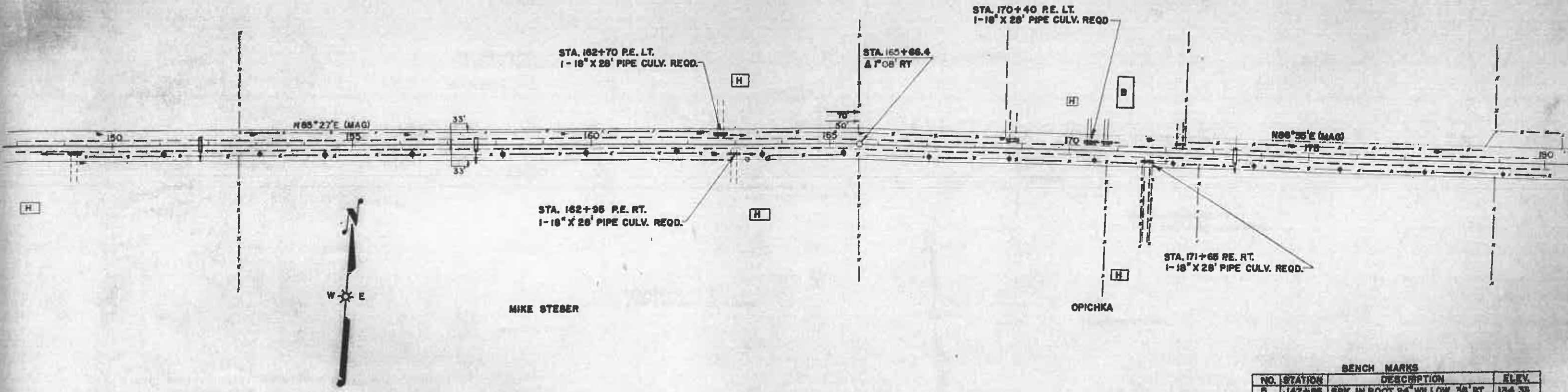
STA. 128+15  
 2-18" X 6" PIPE CULV. REQ'D  
 EXTEND CULV. ON EACH END



FRANK ZIMA

ALOIS STENGL

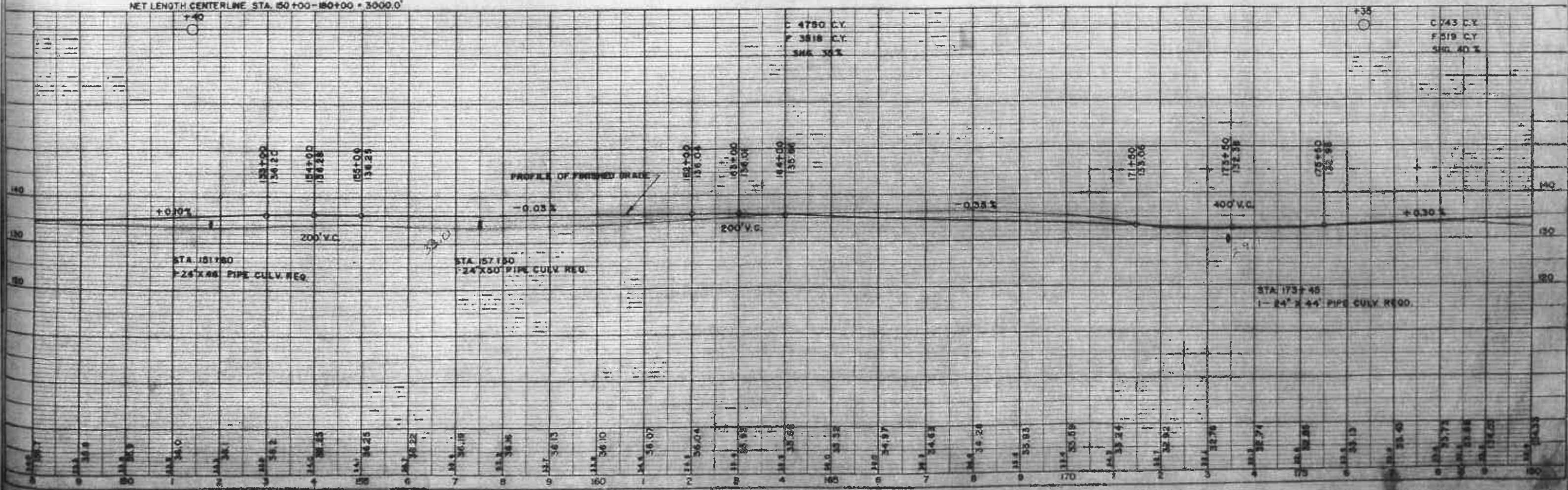
BY	PROJECT	SHEET NUMBER	TOTAL SHEETS
	8 0680 (2)	7	45



NOTE: ALL EXISTING CULVERTS SHOWN ON THIS SHEET TO BE REMOVED.

NET LENGTH CENTERLINE STA. 150+00-180+00 = 3000.0'

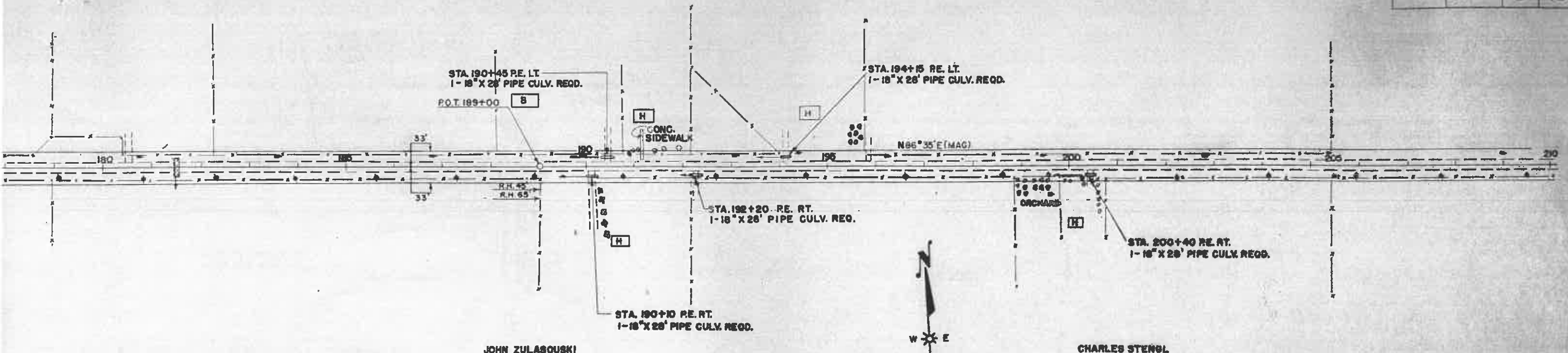
BENCH MARKS			
NO.	STATION	DESCRIPTION	ELEV.
5	147+86	SPK. IN ROOT 24' WILLOW 38' RT.	124.39
6	182+00	SPK. IN M' ELM 60' RT.	135.30
7	181+44	TOP WING HIP SW. COR. BRIDGE	133.95



CHARLES STENGL

RUDOLPH DOUCHA

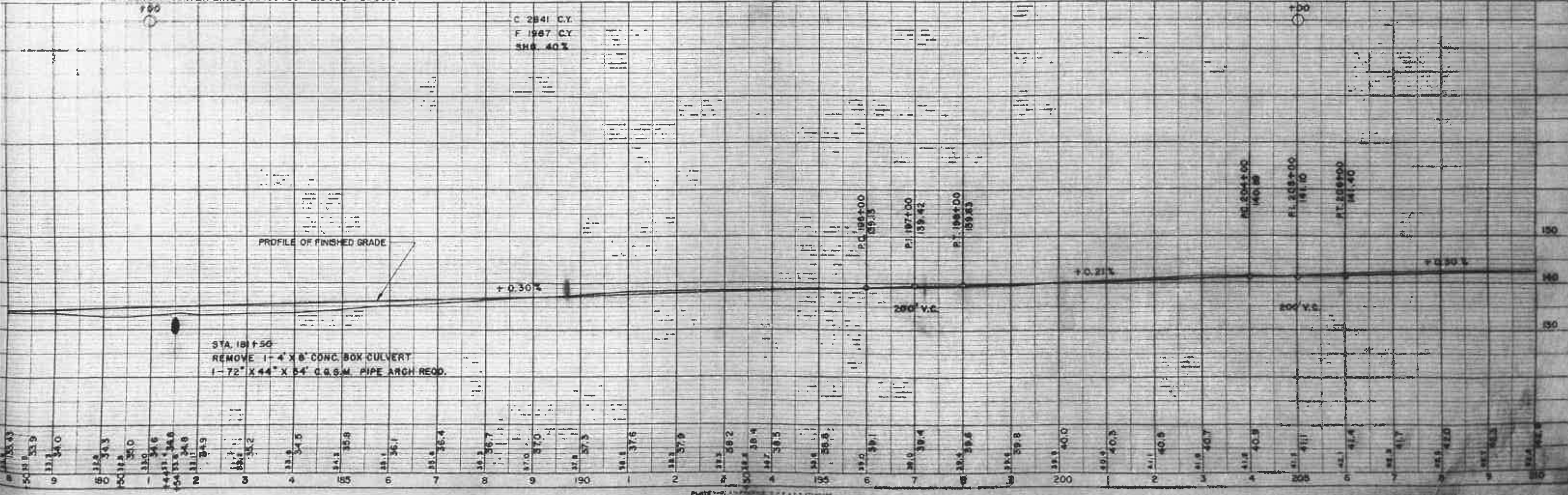
PROJECT	5 0050121	SHEET NUMBER	8	TOTAL SHEETS	45
---------	-----------	--------------	---	--------------	----



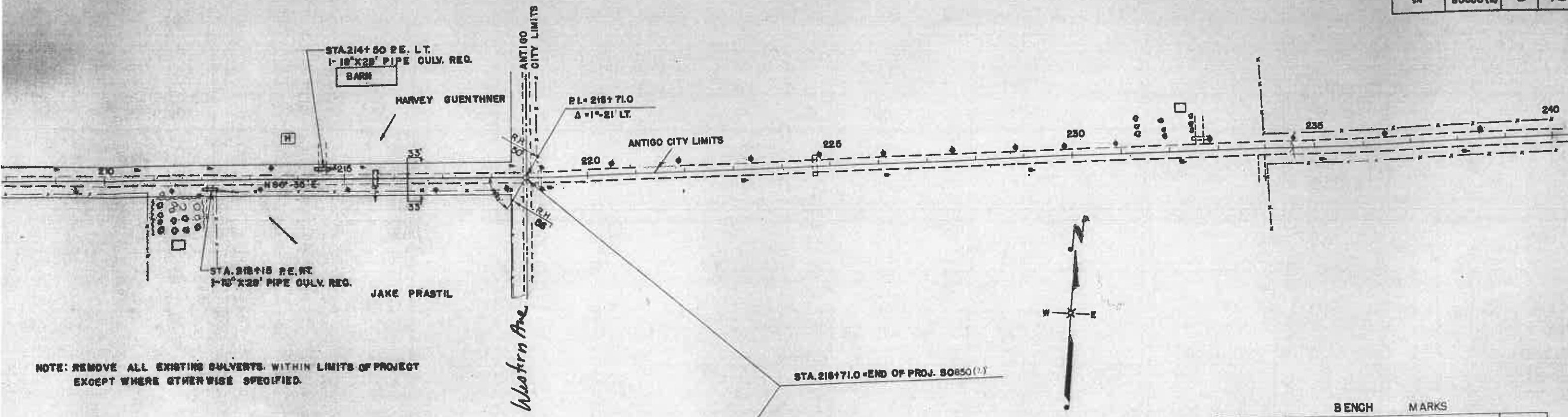
NOTE: ALL EXISTING CULVERTS SHOWN ON THIS SHEET TO BE REMOVED.

NO.	STATION	DESCRIPTION	ELEV.
7	181+44	TOP WIND HIP S.W. COR. BRIDGE	133.96
8	190+55	SPK. BACK SIDE 36\"/>	

NET LENGTH CENTER LINE STA. 180+00 - 210+00 = 3000.0'



180	181	182	183	184	185	186	187	188	189	190	191	192	193	194	195	196	197	198	199	200	201	202	203	204	205	206	207	208	209	210																																																																																																																																																																																																																																																																																																																																																																																																																																																																																																																																																																																																																																																																																																																																																																																																																																																																																																																																																																																																																																																																																																																																																																
33.3	33.9	34.5	35.1	35.7	36.3	36.9	37.5	38.1	38.7	39.3	39.9	40.5	41.1	41.7	42.3	42.9	43.5	44.1	44.7	45.3	45.9	46.5	47.1	47.7	48.3	48.9	49.5	50.1	50.7	51.3	51.9	52.5	53.1	53.7	54.3	54.9	55.5	56.1	56.7	57.3	57.9	58.5	59.1	59.7	60.3	60.9	61.5	62.1	62.7	63.3	63.9	64.5	65.1	65.7	66.3	66.9	67.5	68.1	68.7	69.3	69.9	70.5	71.1	71.7	72.3	72.9	73.5	74.1	74.7	75.3	75.9	76.5	77.1	77.7	78.3	78.9	79.5	80.1	80.7	81.3	81.9	82.5	83.1	83.7	84.3	84.9	85.5	86.1	86.7	87.3	87.9	88.5	89.1	89.7	90.3	90.9	91.5	92.1	92.7	93.3	93.9	94.5	95.1	95.7	96.3	96.9	97.5	98.1	98.7	99.3	99.9	100.5	101.1	101.7	102.3	102.9	103.5	104.1	104.7	105.3	105.9	106.5	107.1	107.7	108.3	108.9	109.5	110.1	110.7	111.3	111.9	112.5	113.1	113.7	114.3	114.9	115.5	116.1	116.7	117.3	117.9	118.5	119.1	119.7	120.3	120.9	121.5	122.1	122.7	123.3	123.9	124.5	125.1	125.7	126.3	126.9	127.5	128.1	128.7	129.3	129.9	130.5	131.1	131.7	132.3	132.9	133.5	134.1	134.7	135.3	135.9	136.5	137.1	137.7	138.3	138.9	139.5	140.1	140.7	141.3	141.9	142.5	143.1	143.7	144.3	144.9	145.5	146.1	146.7	147.3	147.9	148.5	149.1	149.7	150.3	150.9	151.5	152.1	152.7	153.3	153.9	154.5	155.1	155.7	156.3	156.9	157.5	158.1	158.7	159.3	159.9	160.5	161.1	161.7	162.3	162.9	163.5	164.1	164.7	165.3	165.9	166.5	167.1	167.7	168.3	168.9	169.5	170.1	170.7	171.3	171.9	172.5	173.1	173.7	174.3	174.9	175.5	176.1	176.7	177.3	177.9	178.5	179.1	179.7	180.3	180.9	181.5	182.1	182.7	183.3	183.9	184.5	185.1	185.7	186.3	186.9	187.5	188.1	188.7	189.3	189.9	190.5	191.1	191.7	192.3	192.9	193.5	194.1	194.7	195.3	195.9	196.5	197.1	197.7	198.3	198.9	199.5	200.1	200.7	201.3	201.9	202.5	203.1	203.7	204.3	204.9	205.5	206.1	206.7	207.3	207.9	208.5	209.1	209.7	210.3	210.9	211.5	212.1	212.7	213.3	213.9	214.5	215.1	215.7	216.3	216.9	217.5	218.1	218.7	219.3	219.9	220.5	221.1	221.7	222.3	222.9	223.5	224.1	224.7	225.3	225.9	226.5	227.1	227.7	228.3	228.9	229.5	230.1	230.7	231.3	231.9	232.5	233.1	233.7	234.3	234.9	235.5	236.1	236.7	237.3	237.9	238.5	239.1	239.7	240.3	240.9	241.5	242.1	242.7	243.3	243.9	244.5	245.1	245.7	246.3	246.9	247.5	248.1	248.7	249.3	249.9	250.5	251.1	251.7	252.3	252.9	253.5	254.1	254.7	255.3	255.9	256.5	257.1	257.7	258.3	258.9	259.5	260.1	260.7	261.3	261.9	262.5	263.1	263.7	264.3	264.9	265.5	266.1	266.7	267.3	267.9	268.5	269.1	269.7	270.3	270.9	271.5	272.1	272.7	273.3	273.9	274.5	275.1	275.7	276.3	276.9	277.5	278.1	278.7	279.3	279.9	280.5	281.1	281.7	282.3	282.9	283.5	284.1	284.7	285.3	285.9	286.5	287.1	287.7	288.3	288.9	289.5	290.1	290.7	291.3	291.9	292.5	293.1	293.7	294.3	294.9	295.5	296.1	296.7	297.3	297.9	298.5	299.1	299.7	300.3	300.9	301.5	302.1	302.7	303.3	303.9	304.5	305.1	305.7	306.3	306.9	307.5	308.1	308.7	309.3	309.9	310.5	311.1	311.7	312.3	312.9	313.5	314.1	314.7	315.3	315.9	316.5	317.1	317.7	318.3	318.9	319.5	320.1	320.7	321.3	321.9	322.5	323.1	323.7	324.3	324.9	325.5	326.1	326.7	327.3	327.9	328.5	329.1	329.7	330.3	330.9	331.5	332.1	332.7	333.3	333.9	334.5	335.1	335.7	336.3	336.9	337.5	338.1	338.7	339.3	339.9	340.5	341.1	341.7	342.3	342.9	343.5	344.1	344.7	345.3	345.9	346.5	347.1	347.7	348.3	348.9	349.5	350.1	350.7	351.3	351.9	352.5	353.1	353.7	354.3	354.9	355.5	356.1	356.7	357.3	357.9	358.5	359.1	359.7	360.3	360.9	361.5	362.1	362.7	363.3	363.9	364.5	365.1	365.7	366.3	366.9	367.5	368.1	368.7	369.3	369.9	370.5	371.1	371.7	372.3	372.9	373.5	374.1	374.7	375.3	375.9	376.5	377.1	377.7	378.3	378.9	379.5	380.1	380.7	381.3	381.9	382.5	383.1	383.7	384.3	384.9	385.5	386.1	386.7	387.3	387.9	388.5	389.1	389.7	390.3	390.9	391.5	392.1	392.7	393.3	393.9	394.5	395.1	395.7	396.3	396.9	397.5	398.1	398.7	399.3	399.9	400.5	401.1	401.7	402.3	402.9	403.5	404.1	404.7	405.3	405.9	406.5	407.1	407.7	408.3	408.9	409.5	410.1	410.7	411.3	411.9	412.5	413.1	413.7	414.3	414.9	415.5	416.1	416.7	417.3	417.9	418.5	419.1	419.7	420.3	420.9	421.5	422.1	422.7	423.3	423.9	424.5	425.1	425.7	426.3	426.9	427.5	428.1	428.7	429.3	429.9	430.5	431.1	431.7	432.3	432.9	433.5	434.1	434.7	435.3	435.9	436.5	437.1	437.7	438.3	438.9	439.5	440.1	440.7	441.3	441.9	442.5	443.1	443.7	444.3	444.9	445.5	446.1	446.7	447.3	447.9	448.5	449.1	449.7	450.3	450.9	451.5	452.1	452.7	453.3	453.9	454.5	455.1	455.7	456.3	456.9	457.5	458.1	458.7	459.3	459.9	460.5	461.1	461.7	462.3	462.9	463.5	464.1	464.7	465.3	465.9	466.5	467.1	467.7	468.3	468.9	469.5	470.1	470.7	471.3	471.9	472.5	473.1	473.7	474.3	474.9	475.5	476.1	476.7	477.3	477.9	478.5	479.1	479.7	480.3	480.9	481.5	482.1	482.7	483.3	483.9	484.5	485.1	485.7	486.3	486.9	487.5	488.1	488.7	489.3	489.9	490.5	491.1	491.7	492.3	492.9	493.5	494.1	494.7	495.3	495.9	496.5	497.1	497.7	498.3	498.9	499.5	500.1	500.7	501.3	501.9	502.5	503.1	503.7	504.3	504.9	505.5	506.1	506.7	507.3	507.9	508.5	509.1	509.7	510.3	510.9	511.5	512.1	512.7	513.3	513.9	514.5	515.1	515.7	516.3	516.9	517.5	518.1	518.7	519.3	519.9	520.5	521.1	521.7	522.3	522.9	523.5	524.1	524.7	525.3	525.9	526.5	527.1	527.7	528.3	528.9	529.5	530.1	530.7	531.3	531.9	532.5	533.1	533.7	534.3	534.9	535.5	536.1	536.7	537.3	537.9	538.5	539.1	539.7	540.3	540.9	541.5	542.1	542.7	543.3	543.9	544.5	545.1	545.7	546.3	546.9	547.5	548.1	548.7	549.3	549.9	550.5	551.1	551.7	552.3	552.9	553.5	554.1	554.7	555.3	555.9	556.5	557.1	557.7	558.3	558.9	559.5	560.1	560.7	561.3	561.9	562.5	563.1	563.7	564.3	564.9	565.5	566.1	566.7	567.3	567.9	568.5	569.1	569.7	570.3	570.9	571.5	572.1	572.7	573.3	573.9	574.5	575.1	575.7	576.3	576.9	577.5	578.1	578.7	579.3	579.9	580.5	581.1	581.7	582.3	582.9	583.5	584.1	584.7	585.3	585.9	586.5	587.1	587.7	588.3	588.9	589.5	590.1	590.7	591.3	591.9	592.5	593.1	593.7	594.3	594.9	595.5	596.1	596.7	597.3	597.9	598.5	599.1	599.7	600.3	600.9	601.5	602.1	602.7	603.3	603.9	604.5	605.1	605.7	606.3	606.9	607.5	608.1	608.7	609.3	609.9	610.5	611.1	611.7	612.3	612.9	613.5	614.1	614.7	615.3	615.9	616.5	617.1	617.7	618.3	618.9	619.5	620.1	620.7	621.3	621.9	622.5	623.1	623.7	624.3	624.9	625.5	626.1	626.7	627.3	627.9	628.5	629.1	629.7	630.3	630.9	631.5	632.1	632.7	633.3	633.9	634.5	635.1	635.7	636.3	636.9	637.5	638.1	638.7	639.3	639.9	640.5	641.1	641.7	642.3	642.9	643.5	644.1	644.7	645.3	645.9	646.5	647.1	647.7	648.3	648.9	649.5	650.1	650.7	651.3	651.9	652.5	653.1	653.7	654.3	654.9	655.5	656.1	656.7	657.3	657.9	658.5	659.1	659.7	660.3	660.9	661.5	662.1	662.7	663.3	663.9	664.5	665.1	665.7	666.3	666.9	667.5	668.1	668.7	669.3	669.9	670.5	671.1	671.7	672.3	672.9	673.5	674.1	674.7	675.3	675.9	676.5	677.1	677.7	678.3	678.9	679.5	680.1	680.7	681.3	681.9	682.5	683.1	683.7	684.3	684.9	685.5	686.1	686.7	687.3	687.9	688.5	689.1	689.7	690.3	690.9	691.5	692.1	692.7	693.3	693.9	694.5	695.1	695.7	696.3	696.9	697.5	698.1	698.7	699.3	699.9	700.5	701.1	701.7	702.3	702.9	703.5	704.1	704.7	705.3	705.9	706.5	707.1	707.7	708.3	708.9	709.5	710.1	710.7	711.3	711.9	712.5	713.1	713.7	714.3	714.9	715.5	716.1	716.7	717.3	717.9	718.5	719.1	719.7	720.3	720.9	721.5	722.1	722.7	723.



NOTE: REMOVE ALL EXISTING CULVERTS WITHIN LIMITS OF PROJECT EXCEPT WHERE OTHERWISE SPECIFIED.

BENCH MARKS			
NO.	STATION	DESCRIPTION	ELEV.
10	211+15	SPIKE IN 18" ELM 80' RT.	143.59

