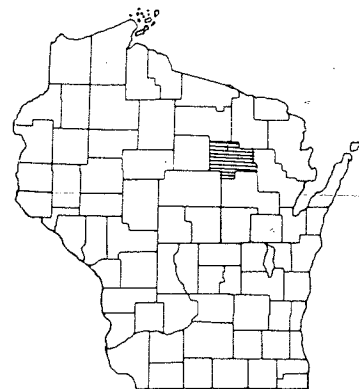


INDEX OF SHEETS

SHEET NO. 1	TITLE
SHEET NO. 2	TYPICAL CROSS SECTIONS
SHEET NO. 2	ESTIMATE OF QUANTITIES
SHEET NO. 2A	MISCELLANEOUS QUANTITIES
SHEET NO. —	RIGHT OF WAY PLAT
SHEET NO. 3-7	PLAN AND PROFILE STA. 385+46 TO STA. 508+00
SHEET NO. 8-8.4	STANDARD DETAILS
SHEET NO. —	DRAINAGE STRUCTURES
SHEET NO. —	CROSS SECTIONS
SHEET NO. 9-18	MACHINE COMPUTATIONS



STATE OF WISCONSIN
STATE HIGHWAY COMMISSION OF WISCONSIN

STATE HIGHWAY	SECTION	STATE	FEDERAL	PROJECT NO.	NUMBER	SHEETS
34.6	9370		11.6	4 WIS.	1	18

4

PLAN AND PROFILE OF PROPOSED

NEVA - WOLF RIVER
C.T.H. "A"
LANGLADE COUNTY
PROJECT S 0937(6)

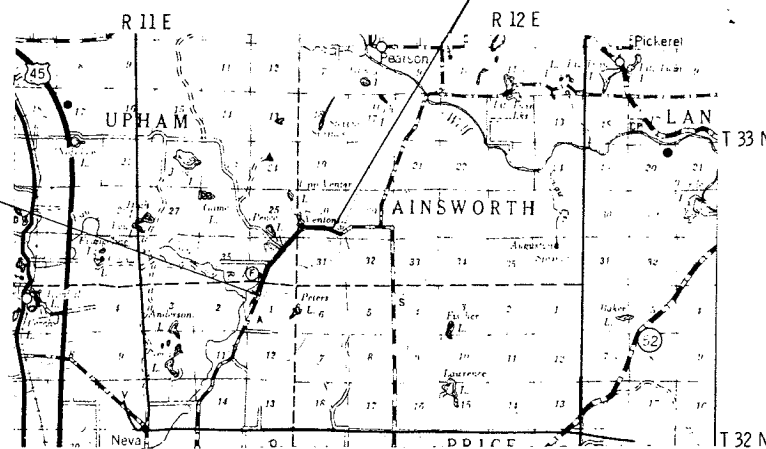
PLAN 1 IN. = 100 FT.
PROFILE HOR. 1 IN. = 100 FT. VERT. 1 IN. = 10 FT.
CROSS SECTIONS HOR. 1 IN. = 5 FT. VERT. 1 IN. = 5 FT.

DESIGN DESIGNATION

ADT 1967	= 440
ADT 1987	= 880
DHV	= 132
D	= 65%
T	= 15%
V	= 50 MPH

BEGINNING OF PROJECT S 0937(6)
STA. 385+46 = STA. 385+46 END OF PROJ.
S 0937(5), 1276.9' S & 390.4' W. OF THE N 1/4
COR., SEC. 1, T 32 N., R 11 E

END OF PROJ. S 0937(6) STA. 508+00
1355' WEST & 1255' N. OF THE SE. COR.
SEC. 30, T 33 N., R 12 E



APPROVED FOR LANGLADE COUNTY
Donald Strubel
8/4/67
Date
COUNTY HIGHWAY COMMISSIONER
Title

CONVENTIONAL SIGNS

STATE LINE	— — — — —	CULVERTS IN PLACE	— — — — —
COUNTY LINE	— — — — —	CULVERTS REQUIRED	— — — — —
TOWNSHIP OR RANGE LINE	— — — — —	DROP INLET	□
SECTION LINE	— — — — —	POWER POLE	— — — — —
NEW RIGHT OF WAY LINE	— — — — —	TELEPHONE OR TELEGRAPH POLE	— — — — —
PRESENT RIGHT OF WAY LINE	— — — — —	RIGHT OF WAY MARKERS	— — — — —
WIRE FENCE	{ WOVEN BARBED	REFERENCE STAKE FOR HUBS ONLY	— — — — —
LOT LINE	— — — — —	MARSH	— — — — —
CORPORATE OR CITY LIMITS	— — — — —	HEDGE	— — — — —
PROPERTY LINE	— — — — —	TREES	— — — — —
TRAVELED WAY OR P.E.	— — — — —	GROUND ELEVATION	DATUM LINE 73.9
RAILROADS	— — — — —	GRADE ELEVATION	DATUM LINE 75.16
BASE OR SURVEY LINE	— — — — —	E.B.S.	— — — — — EXCAVATION BELOW SUBGRADE

LAYOUT

SCALE 2 MILES

TOTAL NET LENGTH OF CENTERLINE = 2.321 MI

RECORD # 20282
LANGLADE COUNTY SURVEYORS OFFICE
DATE ENTERED 1/3/05 BY D. FLUSTY

STATE HIGHWAY COMMISSION OF WISCONSIN
MADISON, WIS.

VEYOR, SONNENBERG NOTE BOOK 261 & 262
SIGN COMPUTER W.J. CAIN M.G. CHECKER W.H.B.
TRICT CHECKER WINAT CORRECT

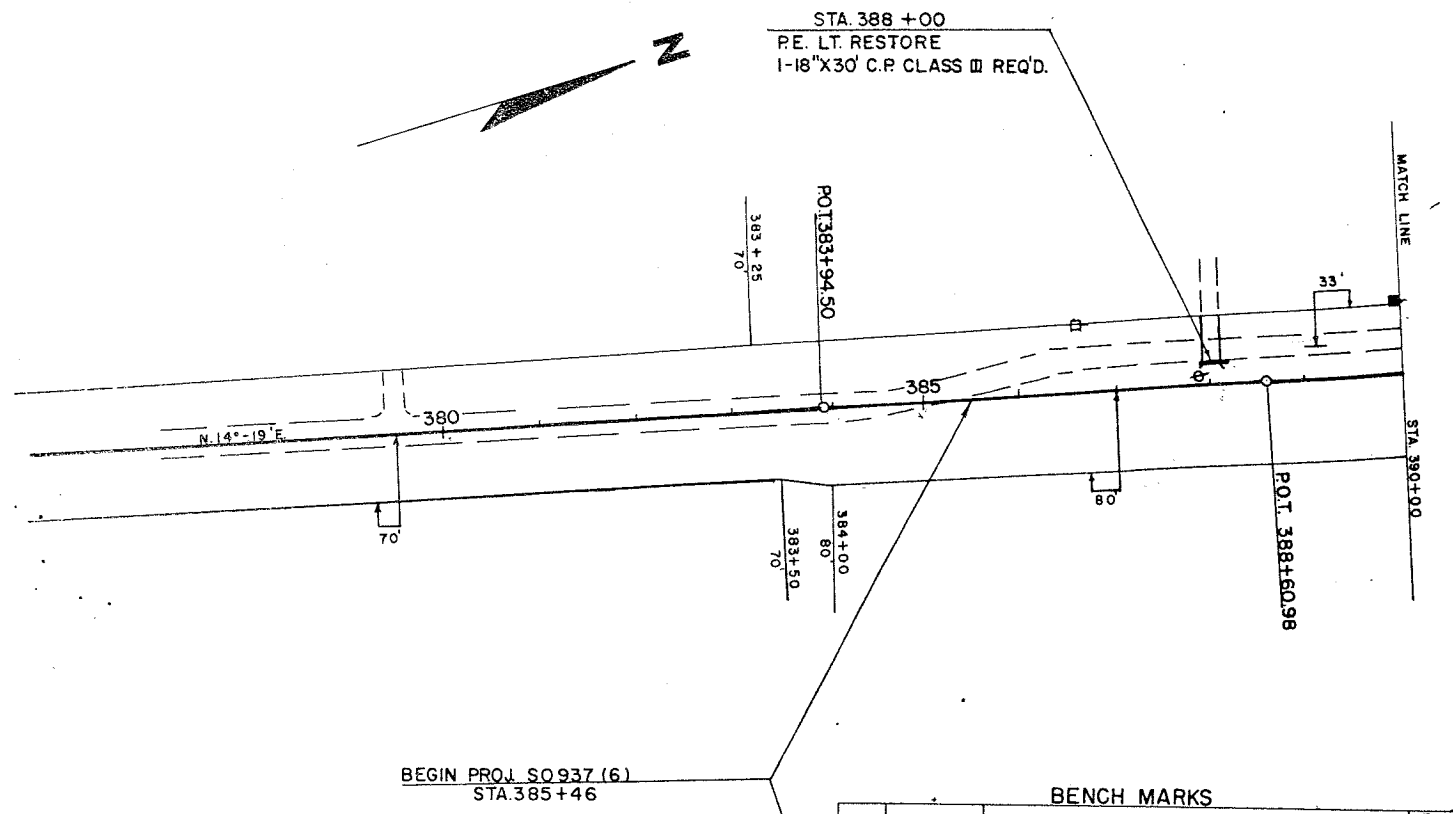
RECT:
DATE 5/1/67 *Max Little* DISTRICT ENGINEER

RECOMMENDED FOR APPROVAL:
DATE 4/9/67 *E.J. Bussler* CHIEF DESIGN ENGINEER

APPROVED:
DATE 5/19/67 *W.J. Burmeister* STATE HIGHWAY ENGINEER

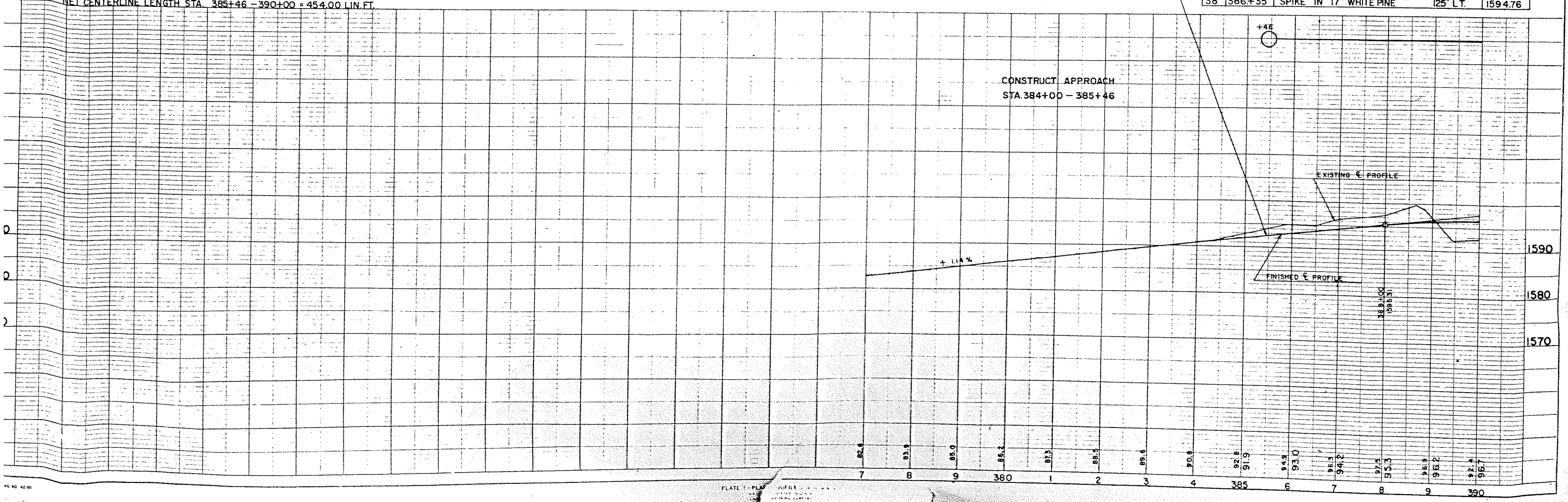
DEPARTMENT OF COMMERCE
BUREAU OF PUBLIC ROADS

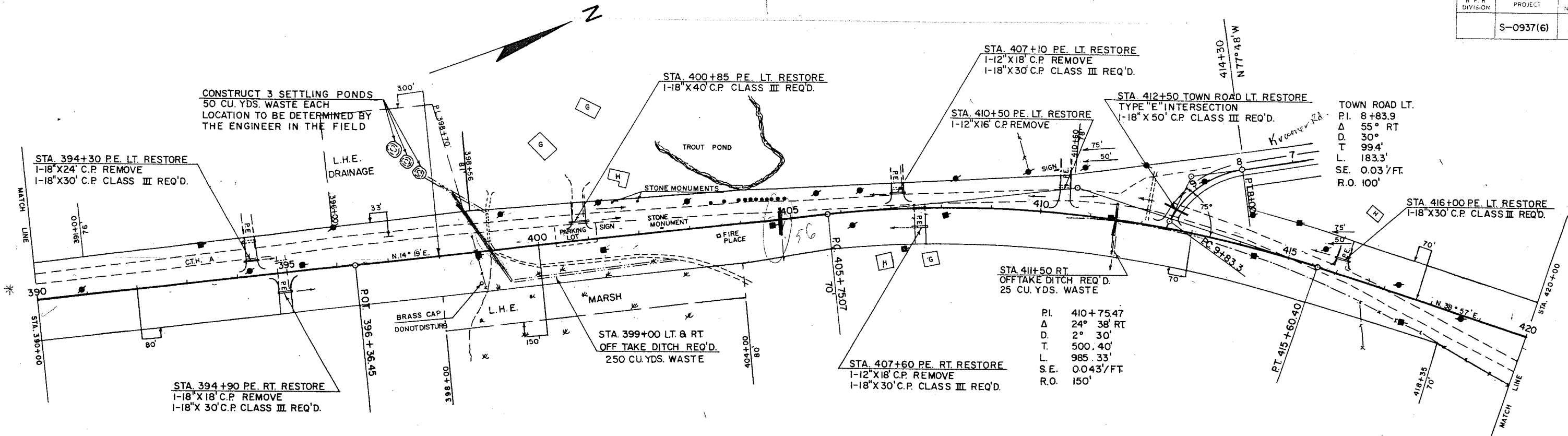
APPROVED: _____ DATE _____
DIVISION ENGINEER



NET CENTERLINE LENGTH STA. 385+46 - 390+00 = 454.00 LIN. FT.

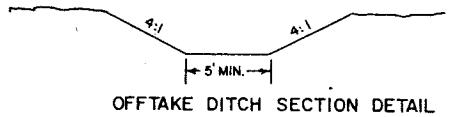
BENCH MARKS			
NO.	STATION	DESCRIPTION	ELEV.
38	386+35	SPIKE IN 17" WHITE PINE 125' L.T.	1594.76





TOWN ROAD LT.
 P.I. 8+83.9
 Δ 55° RT
 D. 30'
 T. 99.4'
 L. 183.3'
 S.E. 0.03'/FT.
 R.O. 100'

PI 410+75.47
 Δ 24° 38' RT
 D. 2° 30'
 T. 500.40'
 L. 985.33'
 S.E. 0.043'/FT.
 R.O. 150'

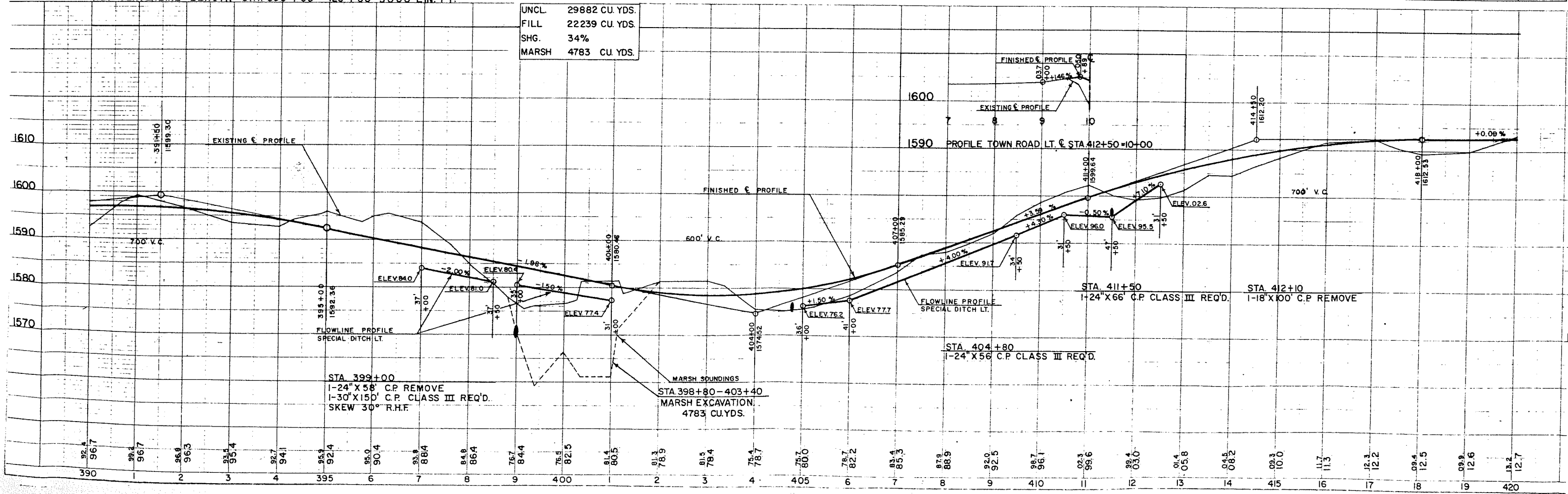


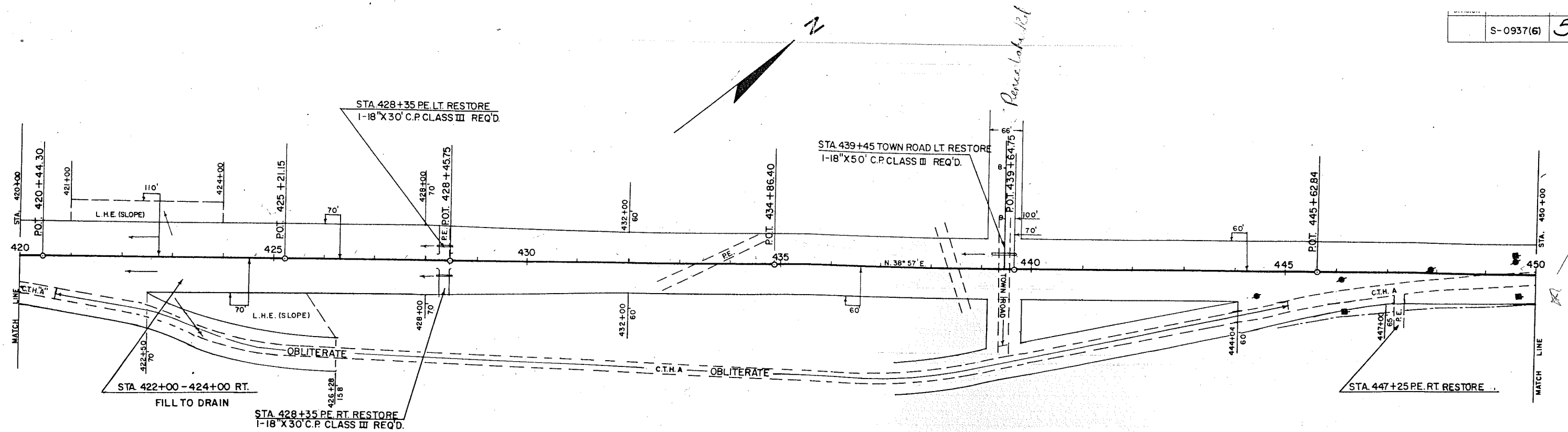
BENCH MARKS

NO.	STATION	DESCRIPTION	ELEV.
39	399+70	SPIKE IN 20' HEMLOCK	95' LT. 1580.03
40	409+10	SPIKE IN 14" BASSWOOD	85' RT. 1592.38
41	419+80	SPIKE IN 12" ELM	100' RT. 1616.97

NET CENTERLINE LENGTH STA. 390+00-420+00=3000 LIN. FT.

UNCL. 29882 CU. YDS.
 FILL 22239 CU. YDS.
 SHG. 34%
 MARSH 4783 CU. YDS.



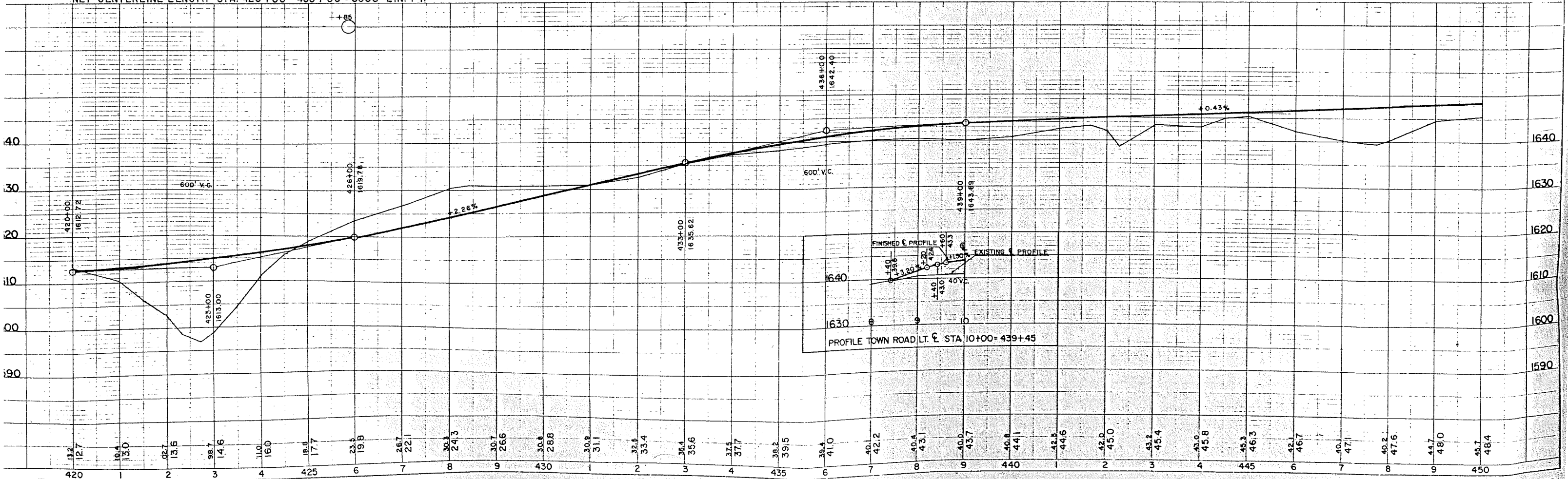


OBLITERATE OLD ROAD
 STA. 420+65 - 445+00 = 25.0 STA.
 TOWN ROAD RT. STA. 439+45 = 1.2 STA.

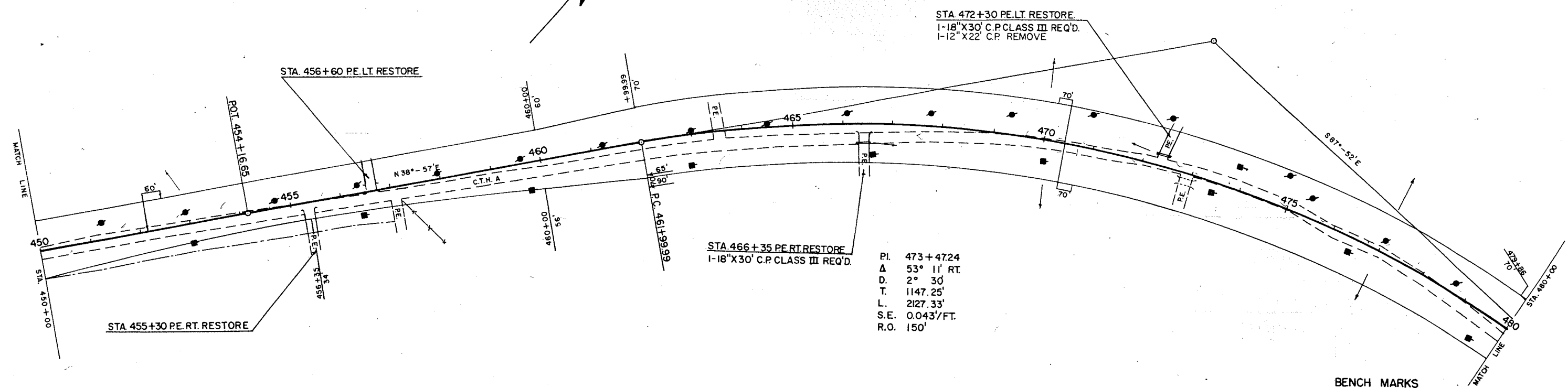
BENCH MARKS

NO.	STATION	DESCRIPTION	ELEV.
42	430+10	SPIKE IN 9" ASH	85' RT. 1632.41
43	440+60	SPIKE IN ROOT OF 12" HEMLOCK	105' RT. 1641.60
44	449+00	SPIKE IN ROOT OF 6" POPPLE	75' RT. 1642.00

NET CENTERLINE LENGTH STA. 420+00 - 450+00 = 3000 LIN. FT.



PLAN & PROFILE STA 420+00 - STA. 450+00

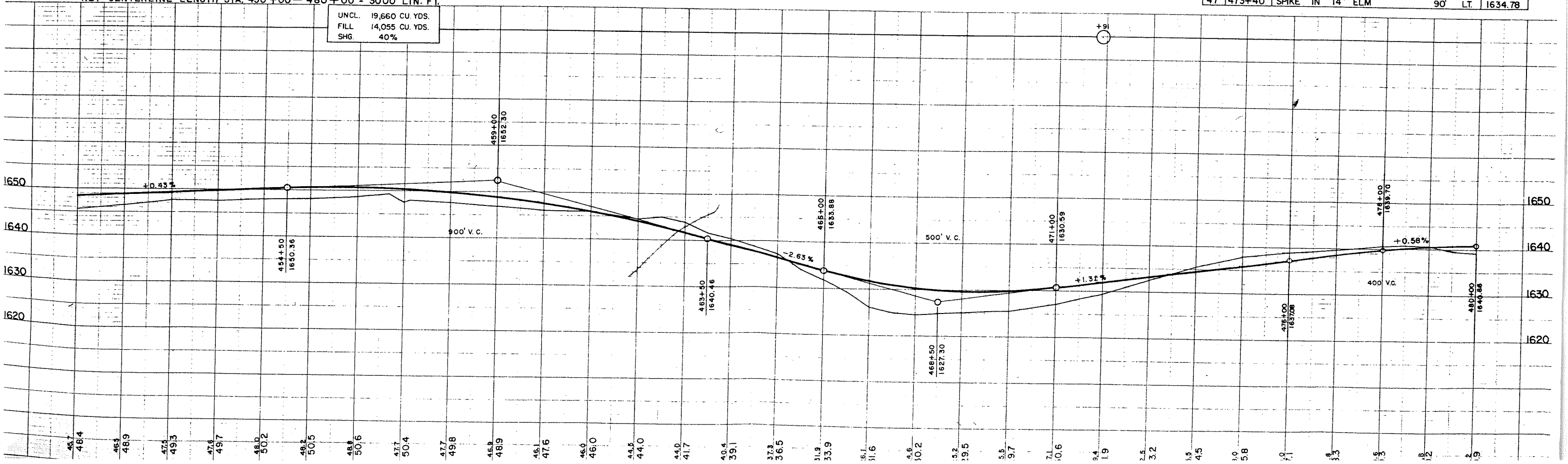


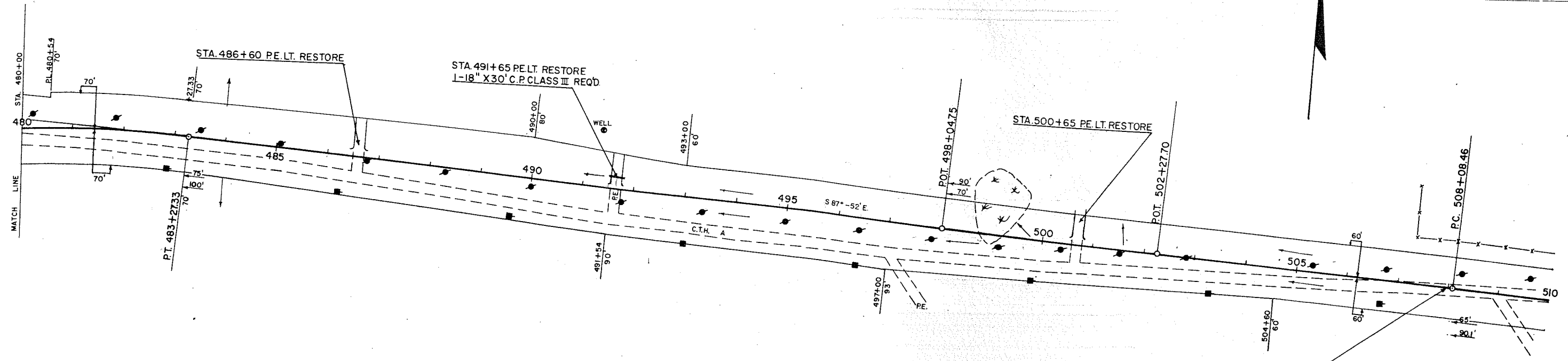
BENCH MARKS

NO.	STATION	DESCRIPTION	ELEV.
45	457+65	SPIKE IN 17" ELM 110' RT.	1651.35
46	463+75	SPIKE IN 7" BASSWOOD 70' LT.	1639.31
47	473+40	SPIKE IN 14" ELM 90' LT.	1634.78

NET CENTERLINE LENGTH STA. 450+00 - 480+00 = 3000 LIN. FT.

UNCL. 19,660 CU. YDS.
 FILL 14,055 CU. YDS.
 SHG. 40%





END PROJ. S-0937 (6) STA. 508+00

BENCH MARKS					
NO.	STATION	DESCRIPTION			ELEV.
48	483+30	SPIKE IN 8" ELM	100' RT.		1640.19
49	494+45	SPIKE IN ROOT OF 10" HEMLOCK	110' RT.		1646.26
50	503+40	SPIKE IN 8" BASSWOOD	80' RT.		1648.90

NET CENTERLINE LENGTH STA. 480+00 - 508+00 = 2,800.00 LIN. FT.

UNCL. 6,686 CU. YDS.
FILL 4,277 CU. YDS.
SHG. 40%

UNCL. 6,170 CU. YDS.
FILL 4,303 CU. YDS.
MARSH 95 CU. YDS.
SHG. 43%

UNCL. 2,040 CU. YDS.
FILL 2,287 CU. YDS.
BORROW 1,556 CU. YDS.
MARSH 129 CU. YDS.
SHG. 40%

