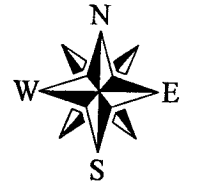


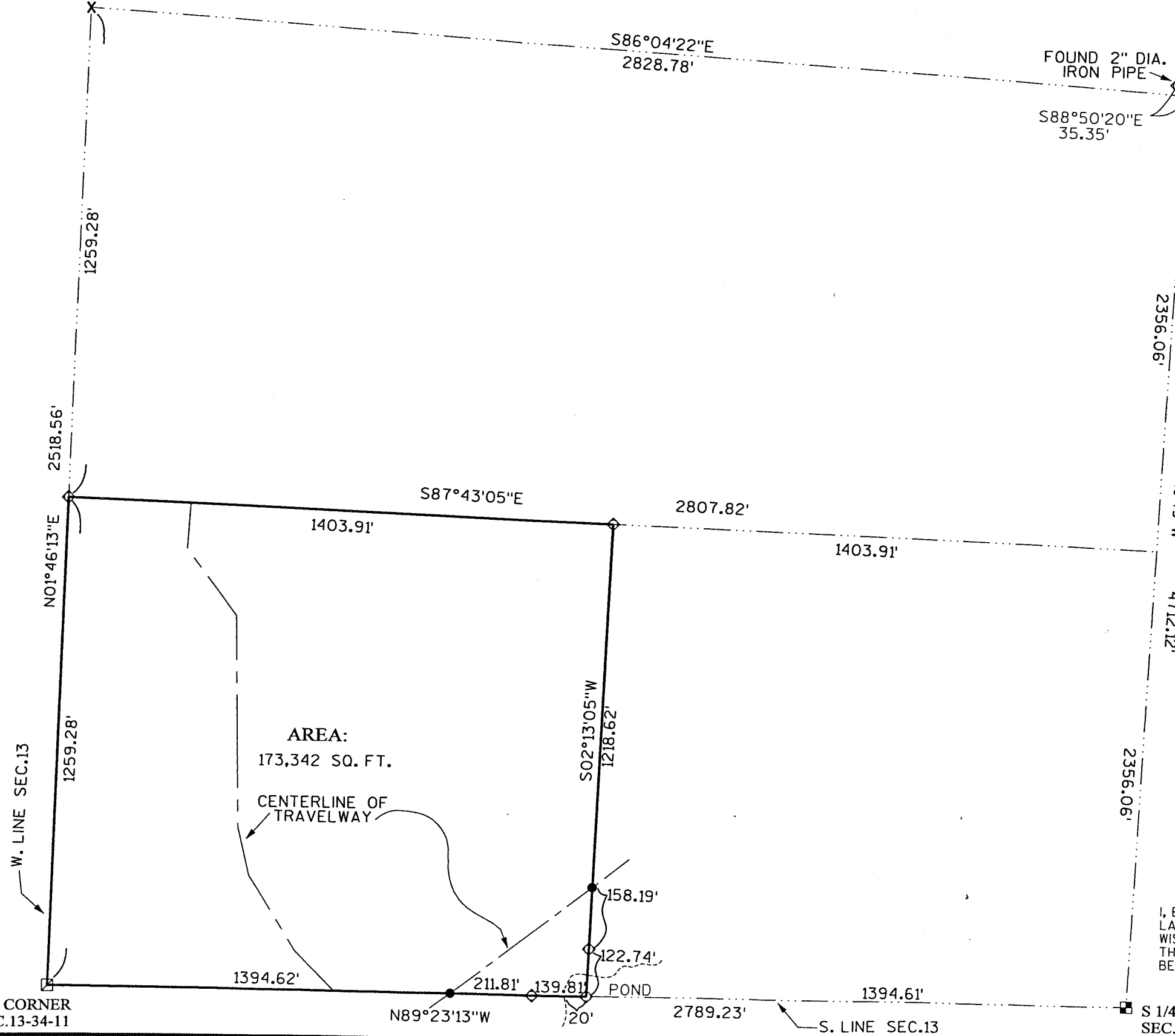
A SURVEY OF THE SW 1/4 OF THE SW 1/4 OF SECTION 13, T34N, R11E, TOWN OF ELCHO, LANGLADE COUNTY, WISCONSIN

N 1/4 CORNER
1 1/4" IRON PIPE FOUND
0.4' BELOW ROAD SURFACE
SEC.13-34-11



W 1/4 CORNER
SEC.13-34-11

E 1/4 CORNER
SEC.13-34-11

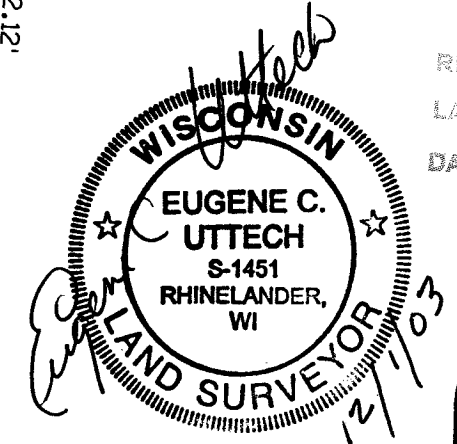


LEGEND

- 3/4" x 18" REBAR, SET
- ◇ 1" x 4" IRON PIPE, SET
- ⊠ 4" DIA. CONCRETE MONUMENT, FOUND
- ⊞ 2" IRON PIPE W/BRASS CAP, FOUND
- X CALCULATED POSITION FROM COORDINATES SUPPLIED BY COUNTY SURVEYOR 6/12/03

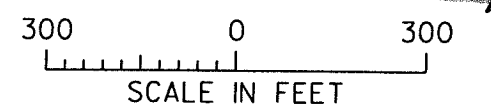
AREA:
173,342 SQ. FT.

CENTERLINE OF TRAVELWAY



I, EUGENE C. UTTECH, REGISTERED LAND SURVEYOR OF THE STATE OF WISCONSIN DO HEREBY CERTIFY THIS IS TRUE AND CORRECT TO THE BEST OF MY KNOWLEDGE AND BELIEF.

RECORD # 20283
LANGLADE COUNTY SURVEYORS OFFICE
DATE FILED: 2/1/05 BY: D. FLUSTY



PLAT OF SURVEY
LANDS BEING A PART OF THE SW 1/4 OF THE SW 1/4 OF SECTION 13, T34N, R11E, TOWN OF ELCHO, LANGLADE COUNTY, WISCONSIN.



DRAWN BY SJO DATE 11-26-03 SHEET of
CHECKED BY ECU SCALE 1"=300 FEET FILE NO. 980455.dgn

SW CORNER
SEC.13-34-11

S 1/4 CORNER
SEC. 13-34-11