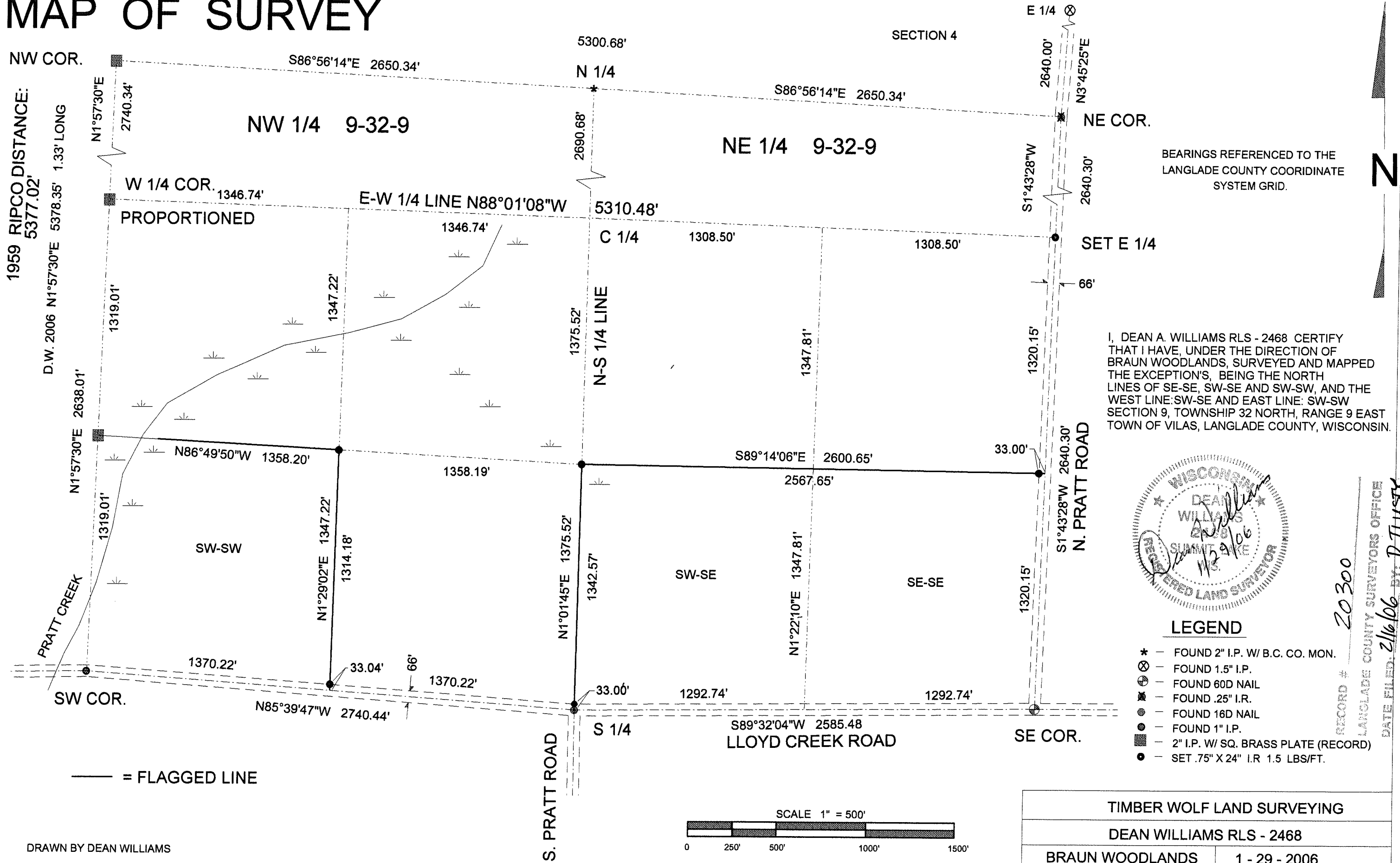


MAP OF SURVEY

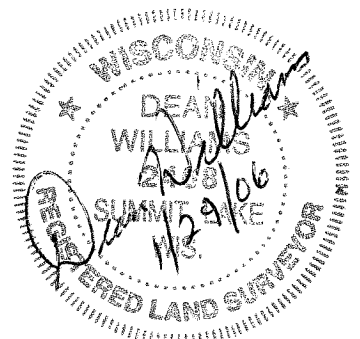
1959 RIPCO DISTANCE:
5377.02'

D.W. 2006 N1°57'30"E 5378.35' 1.33' LONG



BEARINGS REFERENCED TO THE
LANGLADE COUNTY COORDINATE
SYSTEM GRID.

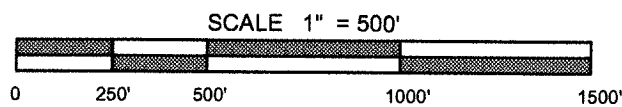
I, DEAN A. WILLIAMS RLS - 2468 CERTIFY
THAT I HAVE, UNDER THE DIRECTION OF
BRAUN WOODLANDS, SURVEYED AND MAPPED
THE EXCEPTION'S, BEING THE NORTH
LINES OF SE-SE, SW-SE AND SW-SW, AND THE
WEST LINE: SW-SE AND EAST LINE: SW-SW
SECTION 9, TOWNSHIP 32 NORTH, RANGE 9 EAST
TOWN OF VILAS, LANGLADE COUNTY, WISCONSIN.



LEGEND

- * - FOUND 2" I.P. W/ B.C. CO. MON.
- ⊗ - FOUND 1.5" I.P.
- ⊙ - FOUND 60D NAIL
- ⊗ - FOUND .25" I.R.
- ⊙ - FOUND 16D NAIL
- ⊙ - FOUND 1" I.P.
- - 2" I.P. W/ SQ. BRASS PLATE (RECORD)
- - SET .75" X 24" I.R. 1.5 LBS/FT.

— = FLAGGED LINE



TIMBER WOLF LAND SURVEYING	
DEAN WILLIAMS RLS - 2468	
BRAUN WOODLANDS	1 - 29 - 2006

DRAWN BY DEAN WILLIAMS

RECORD # 20300
 LANGLADE COUNTY SURVEYORS OFFICE
 DATE FILED: 2/16/06 BY: D. LUSTY