

REVISED 6/24/2006

# MAP OF SURVEY

REVISED 6/24/2006

LOT 9, BLOCK 5 PLAT OF ELCHO  
LOCATED IN PART OF THE NE-NE SEC. 13 T34N, R10E.

BEARINGS REFERENCED  
TO THE EAST LINE OF THE NE 1/4  
OF SECTION 13, T34N, R10E,  
ASSUMED TO BEAR: N0°42'15"E



TIMBER WOLF LAND SURVEYING - DEAN A. WILLIAMS RLS - 2468

N1/4

N-S 1/4 LINE N0°02'49"E  
1333.81'

1333.81'

OLD ABANDONED RR R/W

ELMO ST.

note: I.P. is  
.92' into R/W

S89°34'47"E

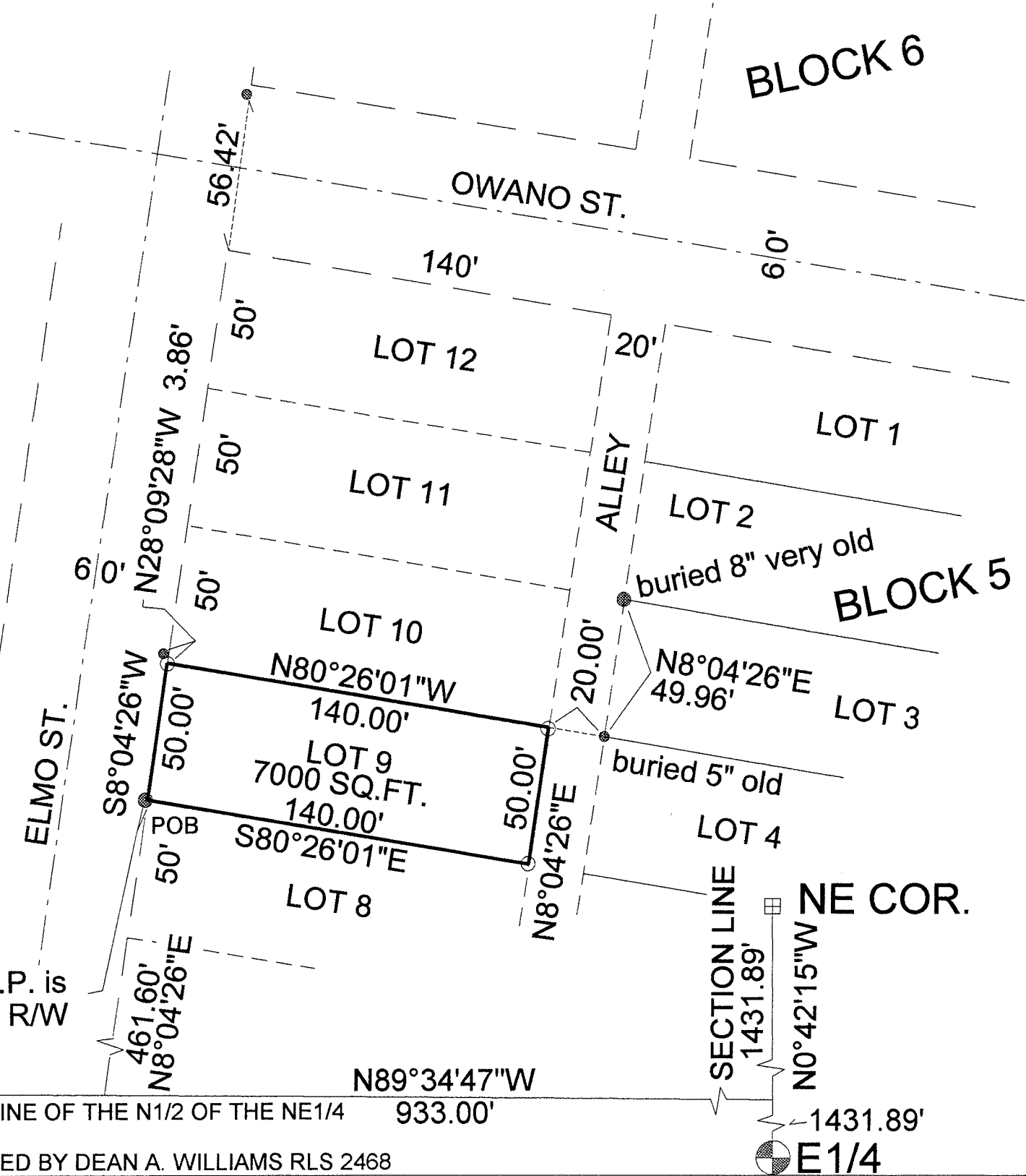
1615.54' S. LINE OF THE N1/2 OF THE NE1/4

N89°34'47"W

933.00'

C1/4 1333.81'

DRAFTED BY DEAN A. WILLIAMS RLS 2468

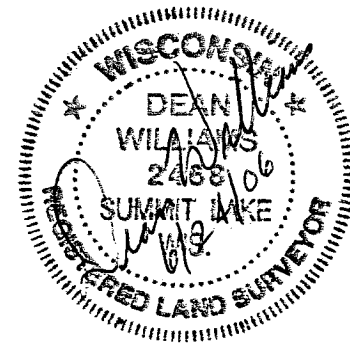


### LEGEND

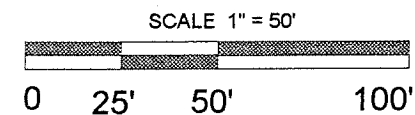
- FOUND 1.5" I.P.
- FOUND 1" I.P.
- ▣ FOUND STONE MON.
- ⊙ FOUND MAG NAIL
- FOUND RR SPIKE
- SET .75" X 18" I.R. 1.5 LBS/FT

### SURVEYORS STATEMENT

I, DEAN A. WILLIAMS RLS, CERTIFY THAT THE  
LEGAL DESCRIPTION OF BLOCK 5, LOT 9  
OF THE PLAT OF ELCHO  
IS TRUE AND CORRECTLY DEPICTED ON THIS MAP,  
AND THIS MAP IS TRUE REPRESENTATION OF  
OF THE SURVEY PREFORMED.



RECORD # 20309  
LANGLADE COUNTY SURVEYORS OFFICE  
DATE FILED: 6/28/06 BY: D. Williams



TIMBER WOLF LAND SURVEYING

DEAN A. WILLIAMS RLS-2468

LARRY ANDERSON  
AMERICAN LEGION

5/15/2006  
6/24/2006

MAP# 2006 - 6  
REVISED