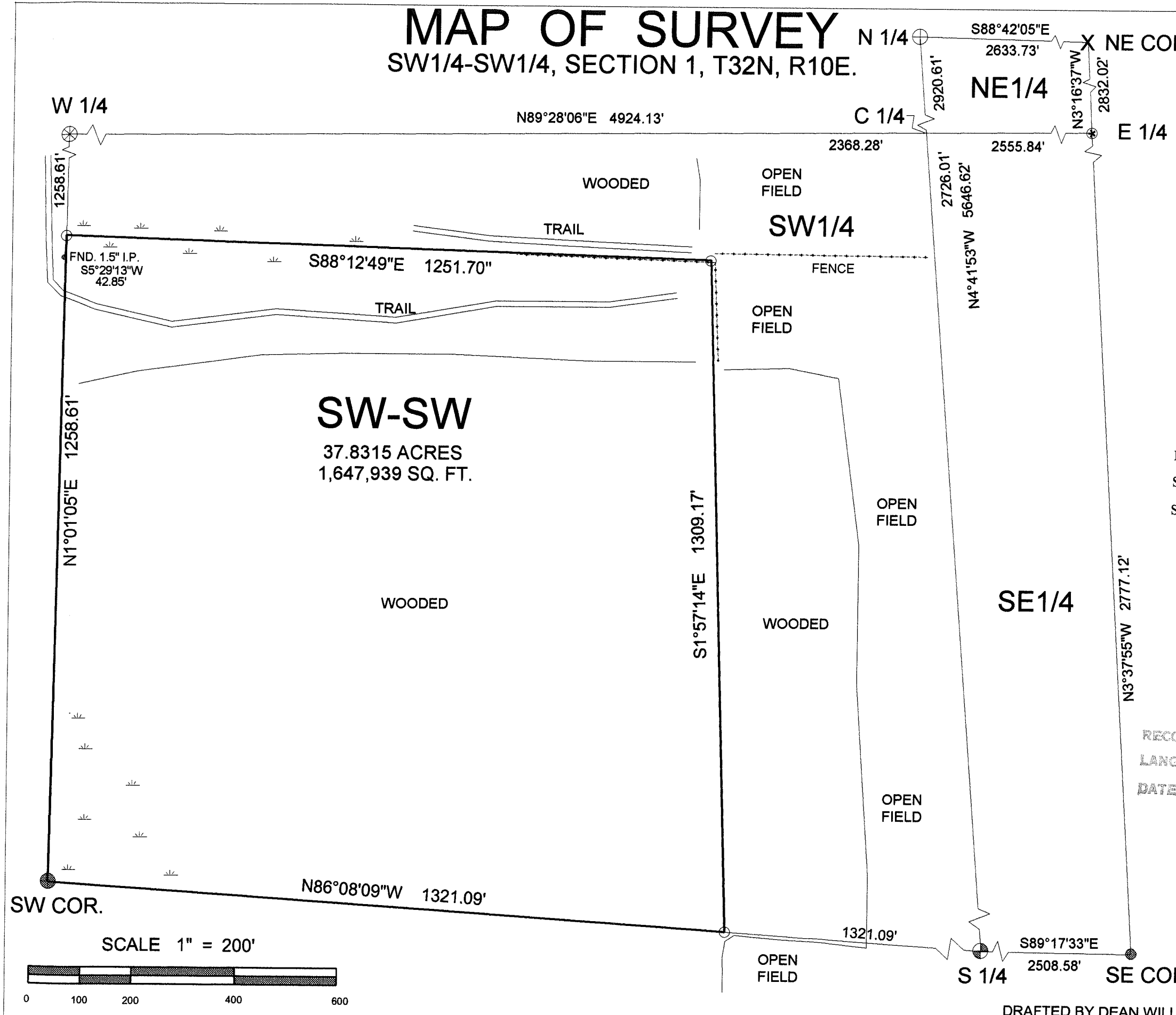


MAP OF SURVEY

SW1/4-SW1/4, SECTION 1, T32N, R10E.



LEGEND

- FOUND 2" ALUM. BERNSTEN MON.
- ⊕ FOUND 60D NAIL
- FOUND 1.3" I.P.
- ⊕ FOUND 4" CAPPED MONUMENT
- ⊕ FOUND 2" B.C.I.P.
- ⊕ FOUND 3.5" B.C.I.P.
- SET 1.03" X 36" I.P. 1.13 LBS/FT.

BEARINGS REFERENCED TO THE
LANGLADE COUNTY COORDINATE
SYSTEM GRID.

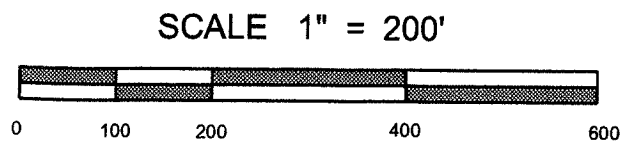


SURVEYORS CERTIFICATE

I DEAN A. WILLIAMS RLS-2468 HEREBY CERTIFY THAT I HAVE
SUBDIVIDED, SURVEYED AND PLATTED THE SW 1/4 OF THE SW 1/4
SECTION 1, T.32N., R.10E., TOWN OF PECK, LANGLADE CO. WISCONSIN



RECORD # 20314
LANGLADE COUNTY SURVEYORS OFFICE
DATE FILED: 8/17/06 BY: D. Rusty



TIMBER WOLF LAND SURVEYING	
DEAN A. WILLIAMS RLS - 2468	
Patrick Kendall	5 - 1 - 2006
SCALE 1" = 200'	MAP# 2006 - 7

DRAFTED BY DEAN WILLIAMS