

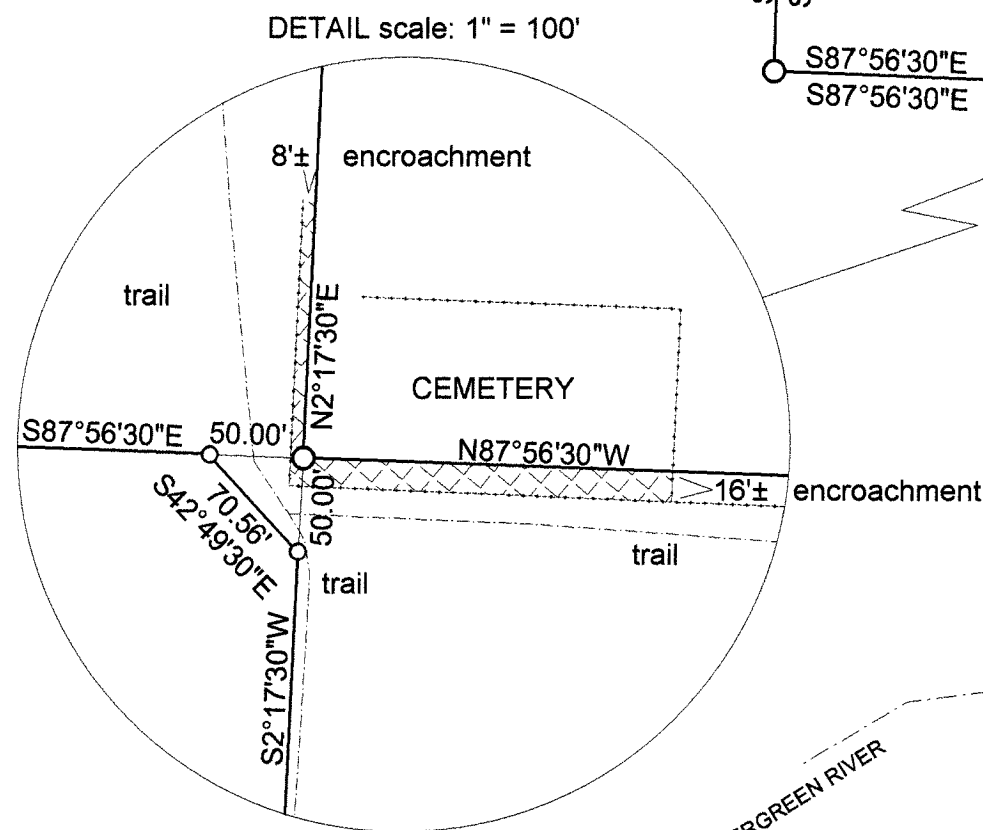
MAP OF SURVEY

PART OF THE NE1/4-SW1/4
AND PART OF THE W1/2-SE1/4

15-31-13
EVERGREEN



BEARINGS REFERENCED TO THE
EAST - WEST 1/4 LINE
TO BEAR : S87°56'30"E.



LEGEND

- FOUND RR SPIKE
- FOUND 1.03" I.P.
- FOUND 2" B.C.I.P.
- SET MAG. NAIL
- SET 1.03" X 30" I.P. 1.13 LBS/FT
- SET .75" X 24" I.R. 1.5 LBS/FT
- SET 1.9" X 36" I.P. 2.25 LBS/FT
- COMPUTED POSITION BY OTHERS
- OLD ROCK AND FENCE LINE
- OLD FENCE LINE

RECORD #

20332

LANGLADE COUNTY SURVEYORS OFFICE

DATE FILED: 4/2/06 BY: D. Williams

EVERGREEN RIVER

PARCEL 1
67.6543 ACRES
2,947,021.13 SQUARE FEET

SW-SE

NW-SE

NE-SW

STATE HWY 64
R/W VARIES

2547.96'(Record)
2548.06'(Measured)

LEGAL DESCRIPTION:

COMMENCING AT THE WEST 1/4 CORNER; THENCE RUNNING ALONG THE EAST-WEST 1/4 LINE, S86°56'30"E, 2063.69 FEET; THENCE S1°10'51"W, 33.00 FEET TO THE SOUTHERN R/W OF STATE HIGHWAY 64, BEING ALSO THE; POINT OF BEGINNING; THENCE CONTINUING S1°10'51"W, 627.07 FEET; THENCE S87°56'30"E, 540.79 FEET; THENCE S42°49'30"E, 70.57 FEET TO THE NORTH-SOUTH 1/4 LINE; THENCE RUNNING ALONG THE NORTH-SOUTH 1/4 LINE, S2°17'30"W, 1879.49 FEET TO THE S 1/4 CORNER; THENCE RUNNING ALONG THE SECTION LINE, S88°54'45"E, 1318.83 FEET TO THE E1/16 CORNER OF SECTIONS 15 AND 22; THENCE RUNNING ALONG THE EAST LINE OF WEST HALF OF THE SOUTHEAST 1/4, N3°37'12"E, 1907.84 FEET TO THE SOUTH LINE OF THE NORTH 40 RODS OF THE NW-SE; THENCE RUNNING ALONG SOUTH LINE OF THE NORTH 40 RODS OF THE NW-SE, N87°56'30"W, 1362.77 FEET TO THE NORTH-SOUTH 1/4 LINE; THENCE N2°17'30"E, 627.01 FEET TO THE SOUTHERN R/W OF STATE HIGHWAY 64; THENCE THENCE RUNNING ALONG THE SOUTHERN R/W OF STATE HIGHWAY 64, N87°56'30"W, 602.94 FEET TO THE POINT OF BEGINNING.

SCALE 1" = 300'

0 150' 300' 600'

TIMBER WOLF LAND SURVEYING

DEAN A. WILLIAMS RLS-2468

THOMAS KOLPACK

9/20/2006

MAP# 2006 - 18
REVISED