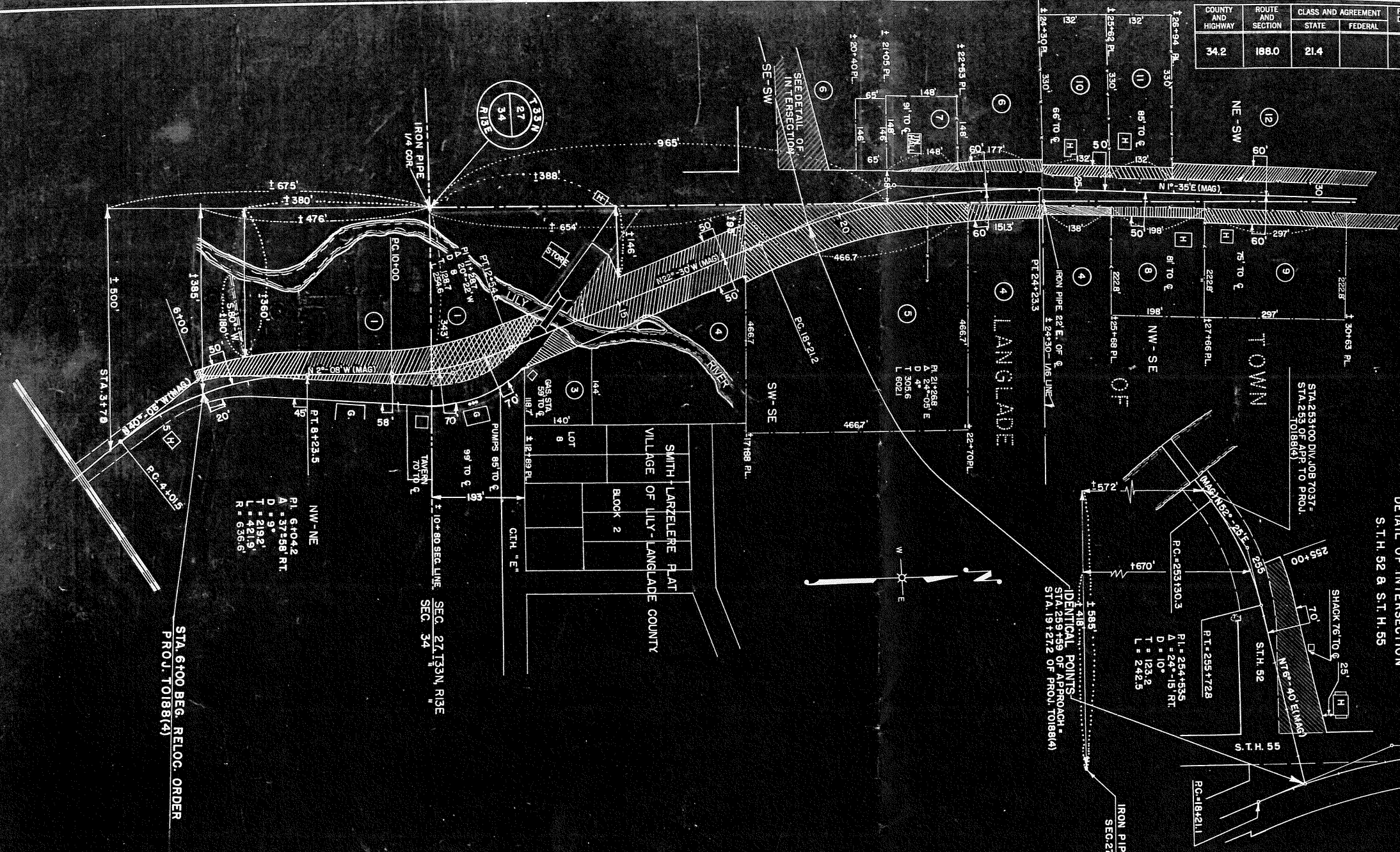


COUNTY AND HIGHWAY	ROUTE AND SECTION	CLASS AND AGREEMENT		FEDERAL DIVISION OFFICE	SHEET NUMBER	TOTAL SHEETS
		STATE	FEDERAL			
34.2	188.0	21.4		WIS. 5N	41	32



NW-NE  
 PL 6104.2  
 A = 37°58' RT  
 D = 9'  
 T = 219.2'  
 L = 421.9'  
 R = 6366'

STA 6+00 BEG. RELOC. ORDER  
 PROJ. T0188(4)

SEC. 27 T33N, R13E  
 SEC. 34

IDENTICAL POINTS  
 STA 259+59 OF PROJ. T0188(4)  
 STA 19+71/2 OF PROJ. T0188(4)

STATE HIGHWAY COMMISSION OF WISCONSIN  
 PLAT OF RIGHT OF WAY REQUIRED  
 PROJECT NO. T 0188 (4)  
 LILY-PICKEREL ROAD  
 LANGLADE COUNTY  
 S.T.H. NO. 55  
 SCALE  
 LENGTH = 1.364 MILES  
 REVISED MAY 18, 1950  
 DATED APRIL 7, 1950

RECORD # 20352  
 LANGLADE COUNTY SURVEYORS OFFICE  
 DATE FILED: 9/19/07 BY: D. Rusty