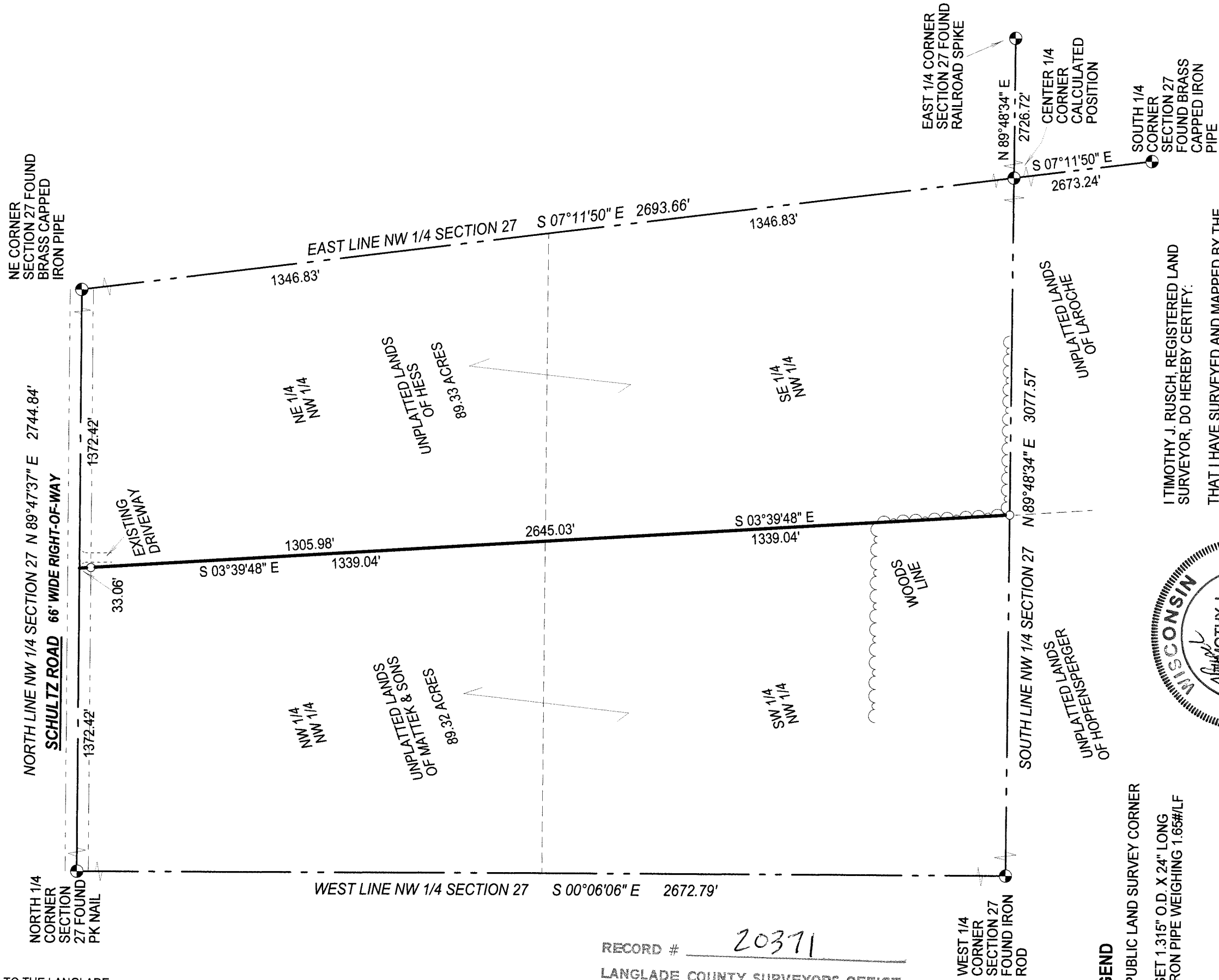


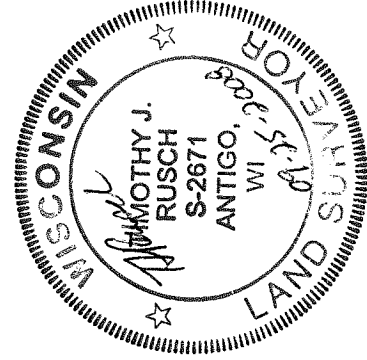
PLAT OF SURVEY

PART OF THE NW 1/4, SECTION 27, T32N-R11E, TOWN OF NEVA,
LANGLADE COUNTY, WISCONSIN

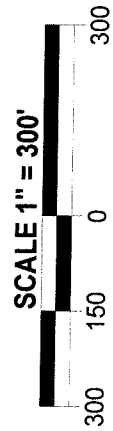
BEARINGS REFERENCED TO THE LANGLADE
COUNTY COORDINATE SYSTEM GRID.



RECORD # 20371
LANGLADE COUNTY SURVEYORS OFFICE
DATE FILED: 3/26/09 BY: D. TRUST



- LEGEND**
- PUBLIC LAND SURVEY CORNER
 - SET 1.315" O.D. X 24" LONG IRON PIPE WEIGHING 1.65#/LF



SURVEYED BY:
RUSCH ENGINEERING & SURVEYING LLC
400 RUSCH ROAD
ANTIGO, WI 54409
(715)623-5044
PROJECT #08-4776

I TIMOTHY J. RUSCH, REGISTERED LAND SURVEYOR, DO HEREBY CERTIFY:
THAT I HAVE SURVEYED AND MAPPED BY THE ORDER OF JIM MATTEK, THE NW 1/4 OF SECTION 27, T32N-R11E.
THAT THIS SURVEY WAS FOR THE PURPOSE OF LOCATING THE EAST LINE OF THE NW 1/4 NW 1/4 AND SW 1/4 NW 1/4 ONLY. OTHER GEOGRAPHICAL FEATURES WERE NOT MAPPED.
THAT THIS IS A TRUE AND CORRECT REPRESENTATION OF THE BOUNDARIES SURVEYED TO THE BEST OF MY KNOWLEDGE AND BELIEF.