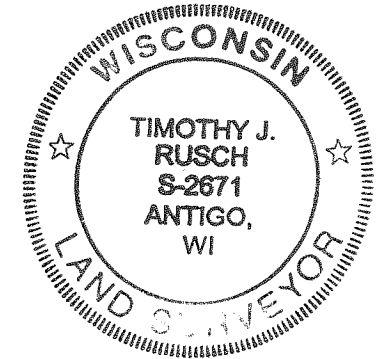


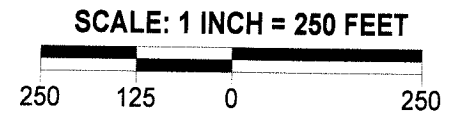
PLAT OF SURVEY

THE NW1/4 NW1/4 AND PARTS OF THE
NE1/4 NW1/4 AND SW1/4 NW1/4, OF
SECTION 19, T. 30 N., R. 12 E., TOWN OF
NORWOOD, LANGLADE COUNTY,
WISCONSIN



LEGEND

- FOUND IRON PIPE
- ⊙ PUBLIC SURVEY MONUMENT
- SET 1.315" O.D. X 24" LONG IRON PIPE WEIGHING 1.65#/LF



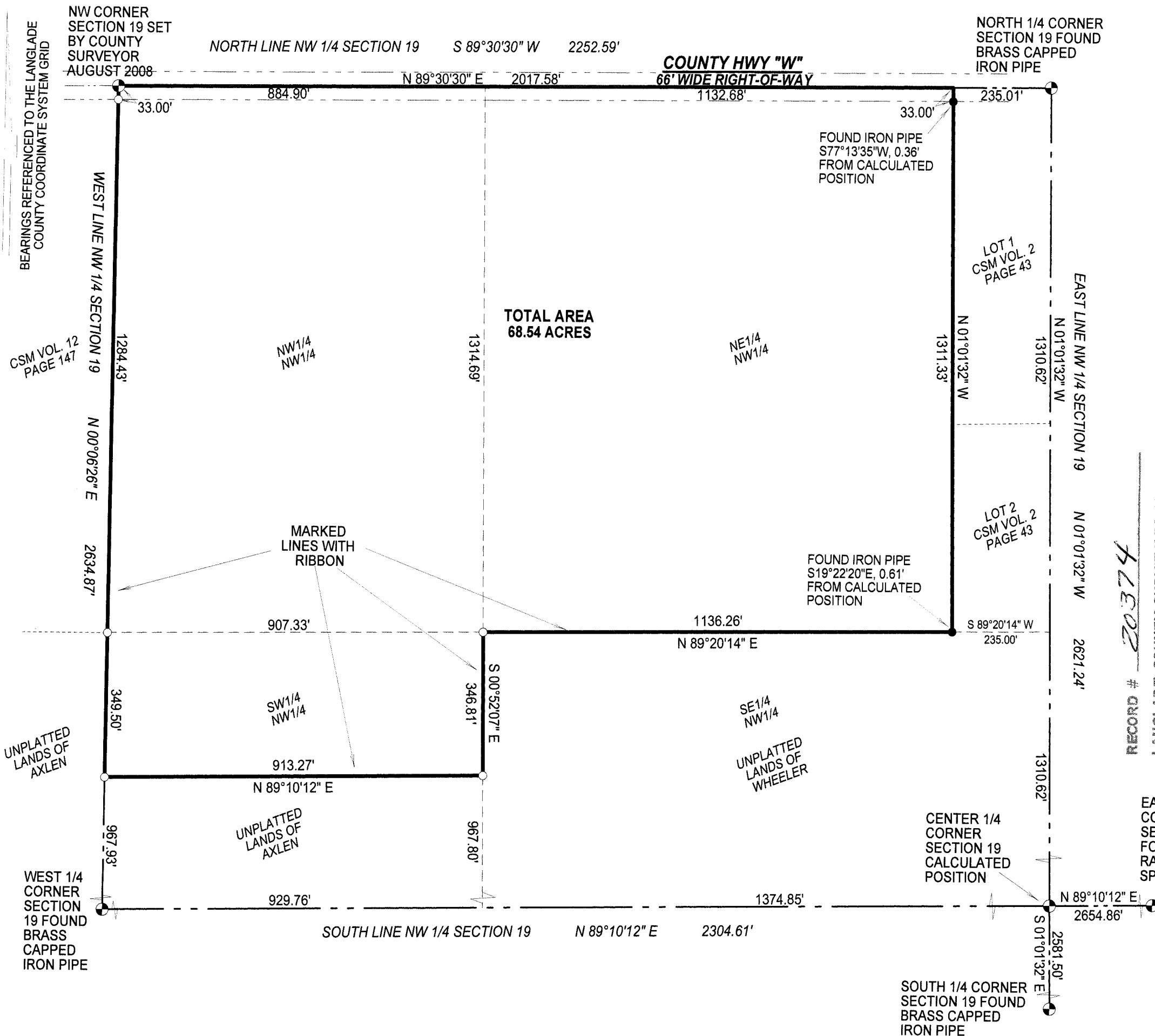
I, TIMOTHY J. RUSCH, REGISTERED LAND SURVEYOR, DO HEREBY CERTIFY:

THAT I HAVE SURVEYED AND MAPPED BY THE ORDER OF TOM HEINZEN, OWNER, A PARCEL BEING THE NW1/4 NW1/4 AND PARTS OF THE NE1/4 NW1/4 AND SW1/4 NW1/4 OF SECTION 19, T30N-R12E.

THAT THIS SURVEY WAS FOR THE PURPOSE OF LOCATING PROPERTY BOUNDARIES ONLY. OTHER GEOGRAPHICAL FEATURES WERE NOT MAPPED.

THAT THIS IS A TRUE AND CORRECT REPRESENTATION OF THE BOUNDARIES SURVEYED TO THE BEST OF MY KNOWLEDGE AND BELIEF.

SURVEYED BY:
RUSCH ENGINEERING & SURVEYING LLC
400 RUSCH ROAD
ANTIGO, WI 54409
(715)623-5044
PROJECT # 08-4740



RECORD # 20374
LANGLADE COUNTY SURVEYORS OFFICE
DATE FILED: 3/26/09 BY: DILLUSKY

EAST 1/4 CORNER SECTION 19 FOUND RAILROAD SPIKE

SOUTH 1/4 CORNER SECTION 19 FOUND BRASS CAPPED IRON PIPE

UNPLATTED LANDS OF AXLEN

UNPLATTED LANDS OF WHEELER

WEST 1/4 CORNER SECTION 19 FOUND BRASS CAPPED IRON PIPE

BEARINGS REFERENCED TO THE LANGLADE COUNTY COORDINATE SYSTEM GRID

NW CORNER SECTION 19 SET BY COUNTY SURVEYOR AUGUST 2008

NORTH 1/4 CORNER SECTION 19 FOUND BRASS CAPPED IRON PIPE

TOTAL AREA 68.54 ACRES