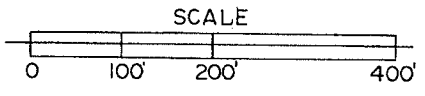


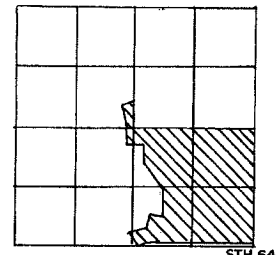
GLEN HILLS SHEET 1 OF 3

A "COUNTY SUBDIVISION" LOCATED IN THE SE 1/4 NW 1/4, NE 1/4 SW 1/4, NW 1/4 SE 1/4, NE 1/4 SE 1/4, SE 1/4 SE 1/4, SW 1/4 SE 1/4, SE 1/4 SW 1/4, SECTION 7, T 31 N, R 14 E, TOWN OF WOLF RIVER, LANGLADE COUNTY, WISCONSIN.



LEGEND

- = 2" IRONPIPE, FOUND
- ◊ = 1" IRON PIPE, FOUND
- = 1/4" X 30" ROUND IRON ROD, 4.17 LBS/FT.
- ▭ = 10' UTILITY EASEMENT

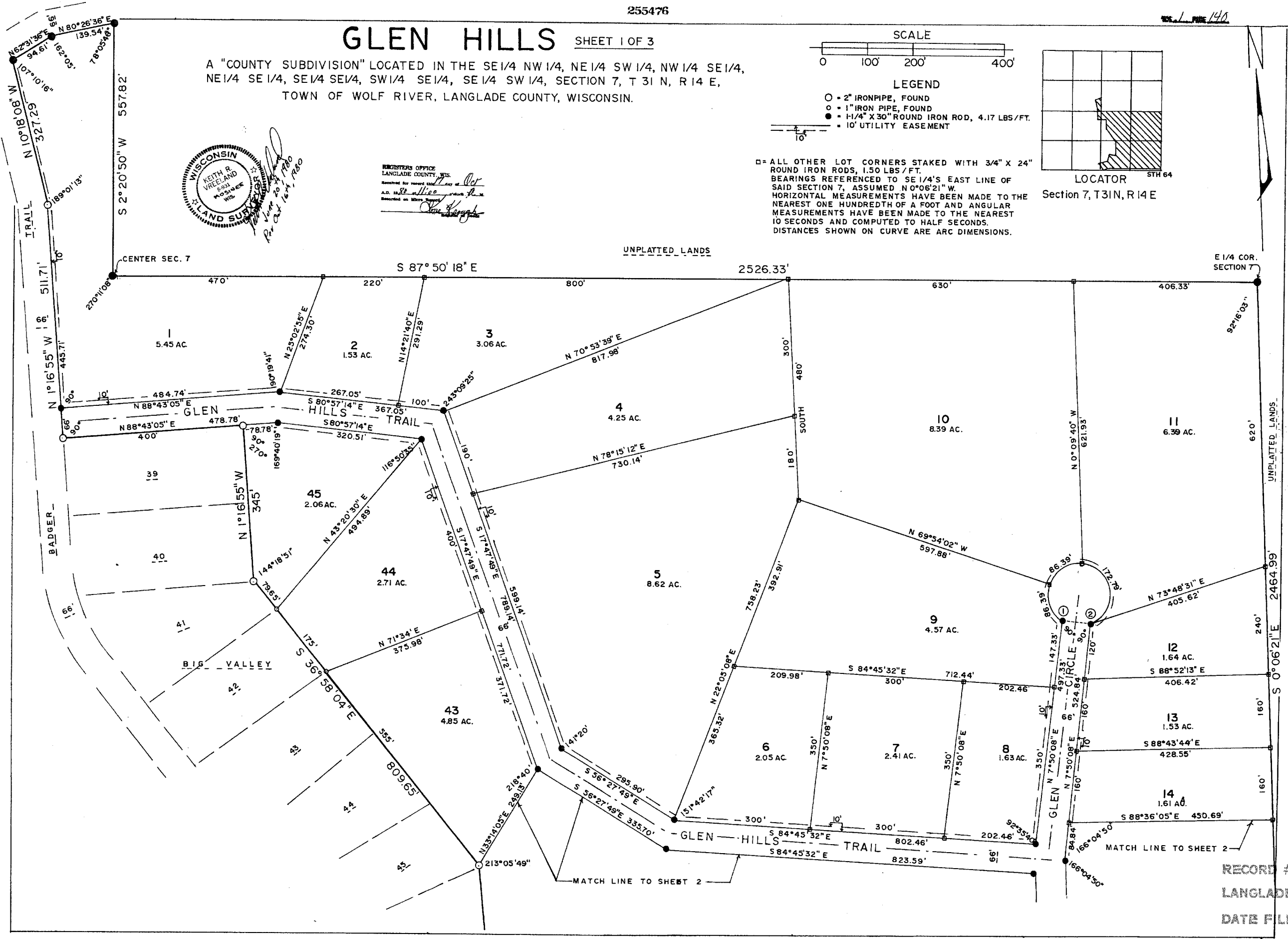


LOCATOR Section 7, T31N, R14E



REGISTERS OFFICE
LANGLADE COUNTY, WIS.
Recorded for record this 1st day of Oct
A.D. 1988
Recorded on Micro Support

□ = ALL OTHER LOT CORNERS STAKED WITH 3/4" X 24" ROUND IRON RODS, 1.50 LBS/FT. BEARINGS REFERENCED TO SE 1/4'S EAST LINE OF SAID SECTION 7, ASSUMED N 0° 06' 21" W. HORIZONTAL MEASUREMENTS HAVE BEEN MADE TO THE NEAREST ONE HUNDREDTH OF A FOOT AND ANGULAR MEASUREMENTS HAVE BEEN MADE TO THE NEAREST 10 SECONDS AND COMPUTED TO HALF SECONDS. DISTANCES SHOWN ON CURVE ARE ARC DIMENSIONS.



RECORD # 20388 20393
LANGLADE COUNTY SURVEYORS OFFICE
DATE FILED: 5/11/10 BY: D. Jusky

