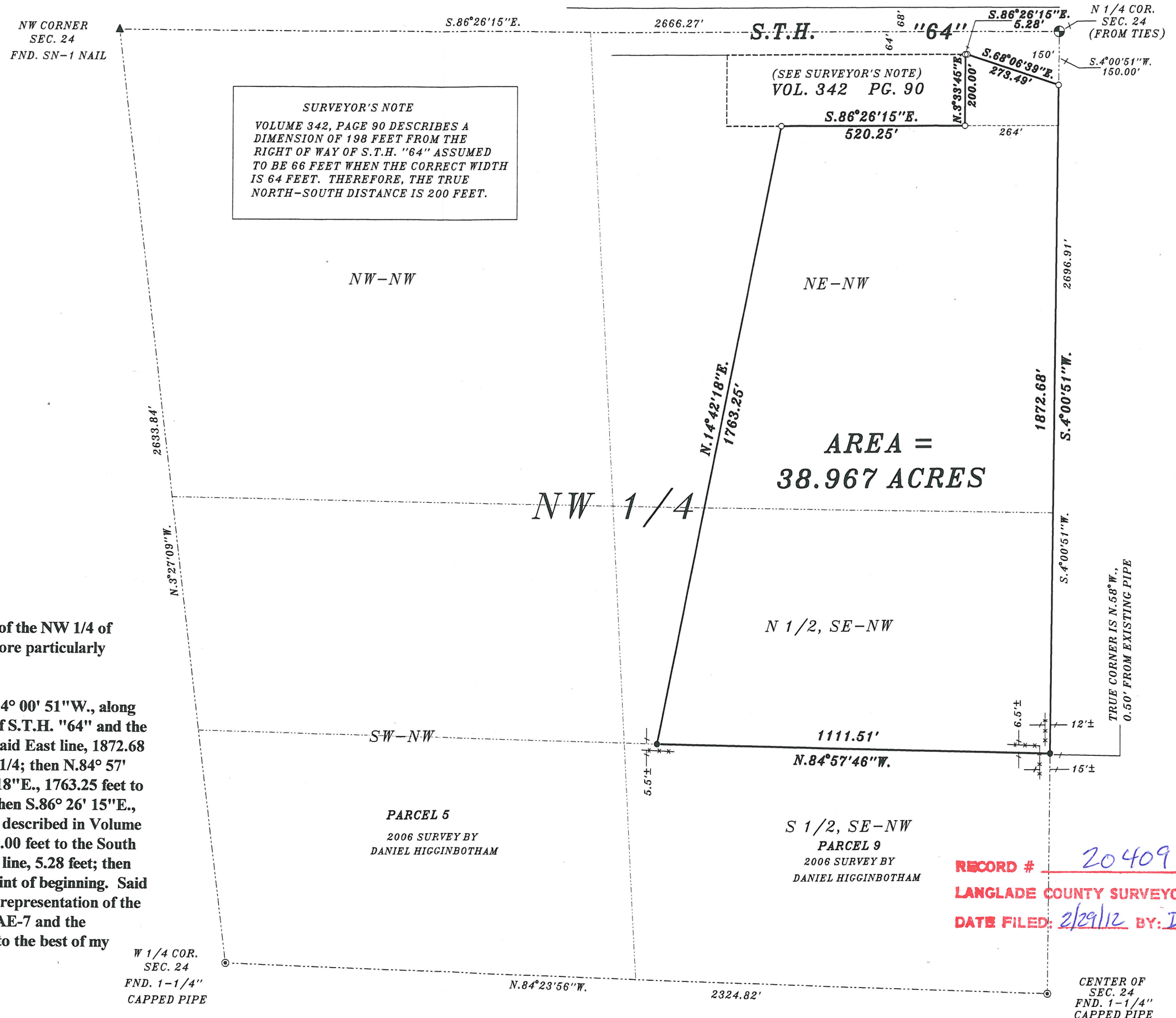


- LEGEND**
- 1" X 24" IRON PIPE SET
  - 1" IRON PIPE FOUND
  - \*\*\* EXISTING FENCE

**Description**  
 A part of the NE 1/4 of the NW 1/4 and part of the SE 1/4 of the NW 1/4 of Section 24, T.31N., R.11E., Langlade county, Wisconsin more particularly described as follows:

Commencing at the N 1/4 corner of said Section 24; then S.4° 00' 51"W., along the East line of said NW 1/4, 150.00 feet to the South line of S.T.H. "64" and the point of beginning; then continuing S.4° 00' 51"W., along said East line, 1872.68 feet to the South line of the N 1/2 of said SE 1/4 of the NW 1/4; then N.84° 57' 46"W., along said South line, 1111.51 feet; then N.14° 42' 18"E., 1763.25 feet to the South line of lands described in Volume 342, Page 90; then S.86° 26' 15"E., along said South line, 520.25 feet to the East line said lands described in Volume 342, Page 90; then N.3° 33' 45"E., along said East line, 200.00 feet to the South line of S.T.H. "64"; then S.86° 26' 15"E., along said South line, 5.28 feet; then S.68° 06' 39"E., along said South line, 273.49 feet to the point of beginning. Said parcel contains 38.967 acres. I certify that this is a correct representation of the lands surveyed and I have complied with the provisions of AE-7 and the provisions of the Landlade County Subdivision Ordinance to the best of my knowledge in surveying and mapping the same.

*Alan W. Knight* 2/1/12



**RECORD #** 20409  
**LANGLADE COUNTY SURVEYORS OFFICE**  
**DATE FILED:** 2/29/12 **BY:** D. TLUSTY

CENTER OF SEC. 24  
 FND. 1-1/4"  
 CAPPED PIPE