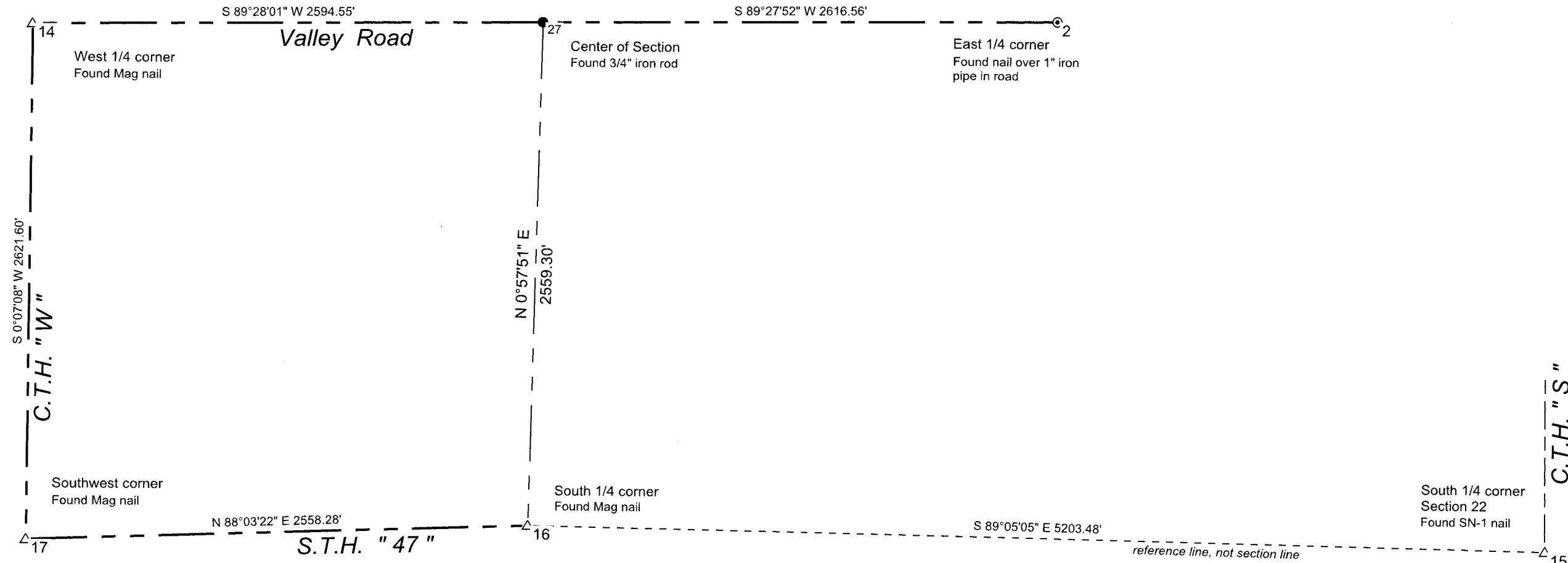


Part of Section 21, T. 30 N., R. 12 E.
Town of Norwood, Langlade County, WI



RECORD # 20410
LANGLADE COUNTY SURVEYORS OFFICE
DATE FILED: 6/8/12 BY: D. TLUSTY

LEGEND

- △ nail/spike found
- found 3/4" rebar down 0.7' in road
- Found Mag nail over 1" iron pipe in road

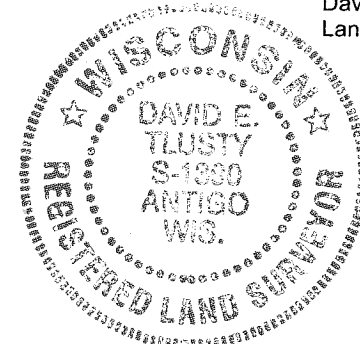
POINT	Y	X	DESC
2	313909.3940	648405.5058	NAIL FND over 1" ip
27	313884.9370	645789.0580	ir fnd ctr s21
14	313860.8036	643194.6202	MAG NA FND
17	311239.2139	643189.1764	MAG NA FND
16	311325.9965	645745.9881	MAG NA FND
15	311242.8743	650948.7993	SN1 FND

Langlade County NAD 83(91) coordinates derived from RTK GPS observations with base occupying county station Norwood SW GPS.

I, David E. Tlusty, Registered Land Surveyor, do hereby certify that on May 25, 2012, I made a survey of part of Section 21, T. 30 N., R. 12 E, to preserve and re-tie the center of section and the East quarter corner, as upcoming road work may destroy the existing monuments. New tie sheets have been prepared for those corners. I also acquired RTK GPS coordinates on those corners and others in the area as shown hereon. I further certify that this map is a true and correct representation of said survey and that this survey is correct to the best of my knowledge and belief.

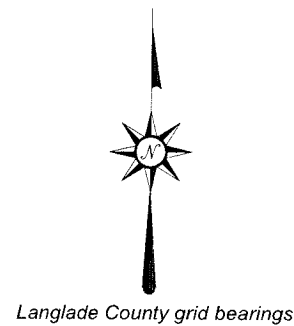
June 8, 2012

David E. Tlusty
David E. Tlusty
Langlade County Surveyor



FILE NAME 213012.TRV		DRAWING Sec 21 partial	
SCALE 600 Ft/In	DATE 6-8-2012	DRAWN BY NAME	
JOB \$JOB	REVISION 1/1	SHEET 1/1	

This map was drawn with TRAVERSE PC Software



Langlade County grid bearings