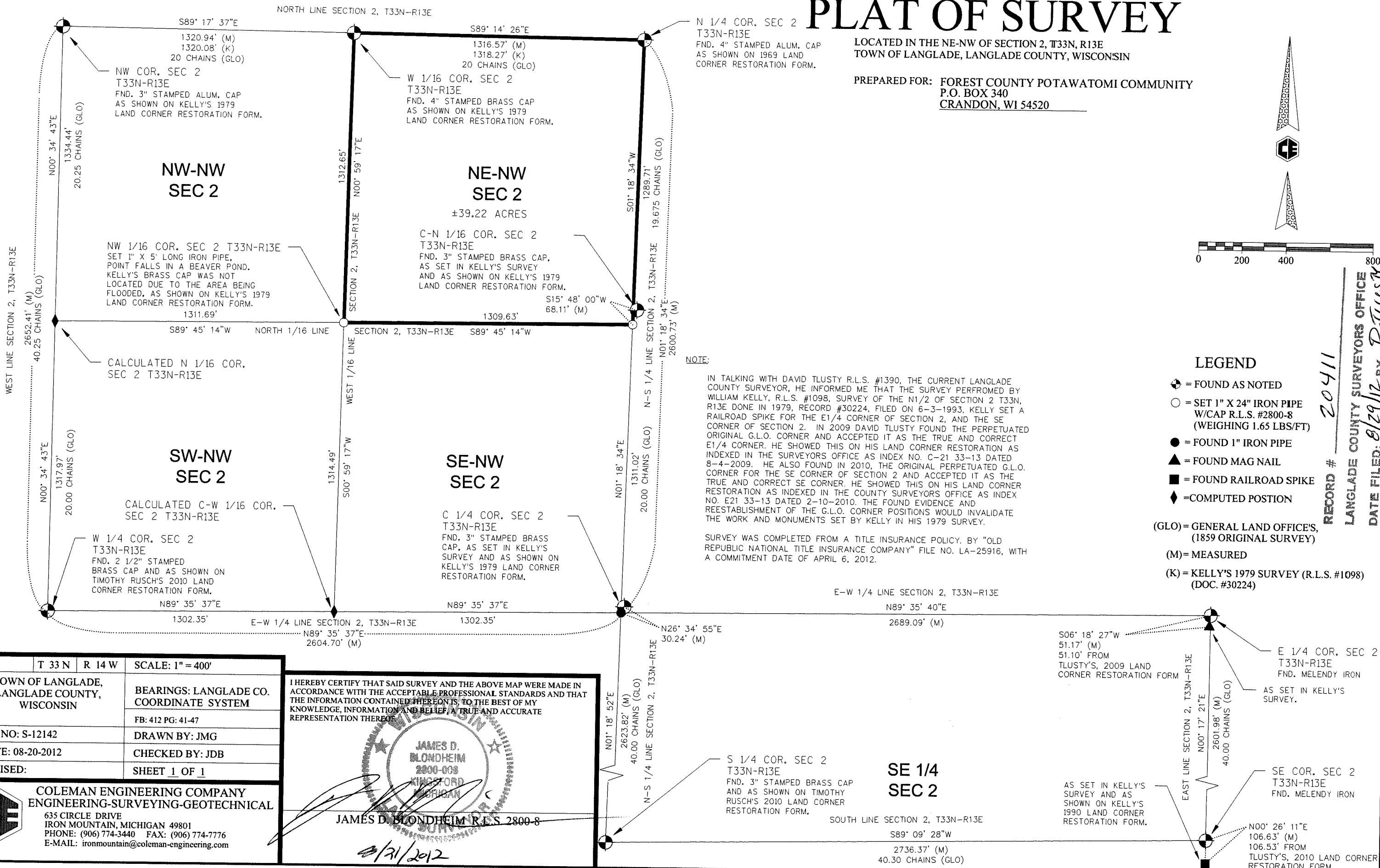


# PLAT OF SURVEY

LOCATED IN THE NE-NW OF SECTION 2, T33N, R13E  
TOWN OF LANGLADE, LANGLADE COUNTY, WISCONSIN

PREPARED FOR: FOREST COUNTY POTAWATOMI COMMUNITY  
P.O. BOX 340  
CRANDON, WI 54520



**NOTE:**  
IN TALKING WITH DAVID TLUSTY R.L.S. #1390, THE CURRENT LANGLADE COUNTY SURVEYOR, HE INFORMED ME THAT THE SURVEY PERFORMED BY WILLIAM KELLY, R.L.S. #1098, SURVEY OF THE N1/2 OF SECTION 2 T33N, R13E DONE IN 1979, RECORD #30224, FILED ON 6-3-1993, KELLY SET A RAILROAD SPIKE FOR THE E1/4 CORNER OF SECTION 2, AND THE SE CORNER OF SECTION 2. IN 2009 DAVID TLUSTY FOUND THE PERPETUATED ORIGINAL G.L.O. CORNER AND ACCEPTED IT AS THE TRUE AND CORRECT E1/4 CORNER. HE SHOWED THIS ON HIS LAND CORNER RESTORATION AS INDEXED IN THE SURVEYORS OFFICE AS INDEX NO. C-21 33-13 DATED 8-4-2009. HE ALSO FOUND IN 2010, THE ORIGINAL PERPETUATED G.L.O. CORNER FOR THE SE CORNER OF SECTION 2 AND ACCEPTED IT AS THE TRUE AND CORRECT SE CORNER. HE SHOWED THIS ON HIS LAND CORNER RESTORATION AS INDEXED IN THE COUNTY SURVEYORS OFFICE AS INDEX NO. E21 33-13 DATED 2-10-2010. THE FOUND EVIDENCE AND REESTABLISHMENT OF THE G.L.O. CORNER POSITIONS WOULD INVALIDATE THE WORK AND MONUMENTS SET BY KELLY IN HIS 1979 SURVEY.

SURVEY WAS COMPLETED FROM A TITLE INSURANCE POLICY, BY "OLD REPUBLIC NATIONAL TITLE INSURANCE COMPANY" FILE NO. LA-25916, WITH A COMMITMENT DATE OF APRIL 6, 2012.

- LEGEND**
- ⊕ = FOUND AS NOTED
  - = SET 1" X 24" IRON PIPE W/CAP R.L.S. #2800-8 (WEIGHING 1.65 LBS/FT)
  - = FOUND 1" IRON PIPE
  - ▲ = FOUND MAG NAIL
  - = FOUND RAILROAD SPIKE
  - ◆ = COMPUTED POSITION
- (GLO) = GENERAL LAND OFFICE'S, (1859 ORIGINAL SURVEY)  
(M) = MEASURED  
(K) = KELLY'S 1979 SURVEY (R.L.S. #1098) (DOC. #30224)

RECORD # 20411  
 LANGLADE COUNTY SURVEYORS OFFICE  
 DATE FILED: 8/29/12 BY: P. TLUSTY

SEC. 2	T 33 N	R 14 W	SCALE: 1" = 400'
TOWN OF LANGLADE, LANGLADE COUNTY, WISCONSIN			BEARINGS: LANGLADE CO. COORDINATE SYSTEM
			FB: 412 PG: 41-47
JOB NO: S-12142		DRAWN BY: JMG	
DATE: 08-20-2012		CHECKED BY: JDB	
REVISED:		SHEET 1 OF 1	
<b>COLEMAN ENGINEERING COMPANY</b> ENGINEERING-SURVEYING-GEOTECHNICAL 635 CIRCLE DRIVE IRON MOUNTAIN, MICHIGAN 49801 PHONE: (906) 774-3440 FAX: (906) 774-7776 E-MAIL: ironmountain@coleman-engineering.com			

I HEREBY CERTIFY THAT SAID SURVEY AND THE ABOVE MAP WERE MADE IN ACCORDANCE WITH THE ACCEPTABLE PROFESSIONAL STANDARDS AND THAT THE INFORMATION CONTAINED HEREON IS, TO THE BEST OF MY KNOWLEDGE, INFORMATION AND BELIEF, A TRUE AND ACCURATE REPRESENTATION THEREOF.

**JAMES D. BLONDHEIM R.L.S. 2800-8**  
 8/31/2012