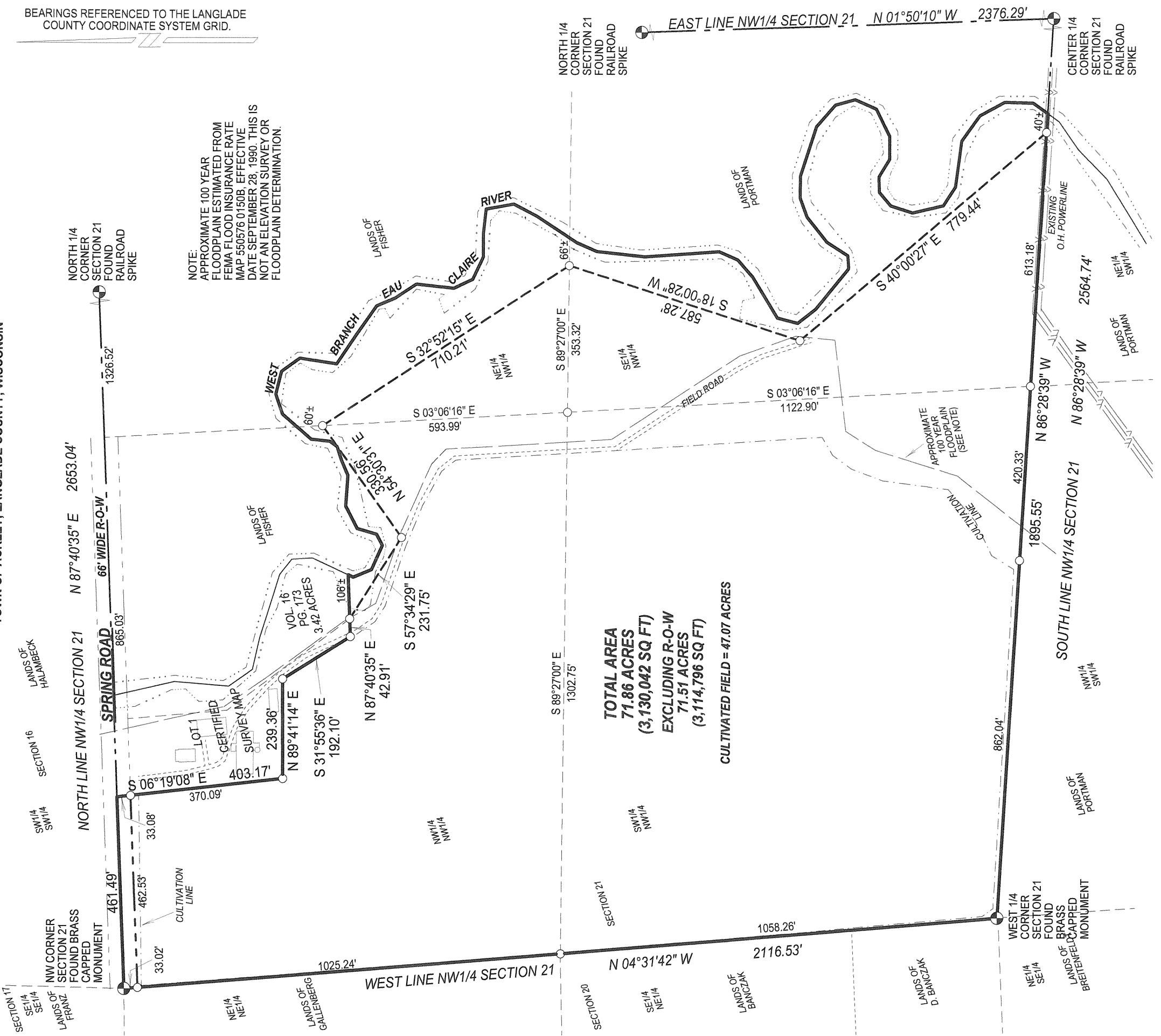


PLAT OF SURVEY

THE SW1/4 NW1/4, AND PART OF THE NW1/4 NW1/4, NE1/4 NW1/4, AND SE1/4 NW1/4, SECTION 21, T31N-R10E, TOWN OF ACKLEY, LANGLADE COUNTY, WISCONSIN

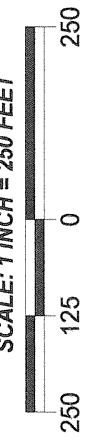
BEARINGS REFERENCED TO THE LANGLADE COUNTY COORDINATE SYSTEM GRID.



NOTE:
APPROXIMATE 100 YEAR FLOODPLAIN ESTIMATED FROM FEMA FLOOD INSURANCE RATE MAP 550576 0150B, EFFECTIVE DATE SEPTEMBER 28, 1990. THIS IS NOT AN ELEVATION SURVEY OR FLOODPLAIN DETERMINATION.

TOTAL AREA
71.86 ACRES
(3,130,042 SQ FT)
EXCLUDING R-O-W
71.51 ACRES
(3,114,796 SQ FT)
CULTIVATED FIELD = 47.07 ACRES

RECORD # 20425
LANGLADE COUNTY SURVEYORS OFFICE
DATE FILED: 7/17/13 BY: D. Tlusty



SURVEYED BY:
RUSCH ENGINEERING & SURVEYING LLC
400 RUSCH ROAD
ANTIGO, WI 54409
(715)623-5044
PROJECT #12-5151

I, Timothy J. Rusch, registered land surveyor, do hereby certify:
That I have surveyed and mapped by the order of Brad Anderson, the SW1/4 NW1/4, and part of the NW1/4 NW1/4, NE1/4 NW1/4, and SE1/4 NW1/4 of Section 21, T31N-R10E. Described as follows:

Beginning at the Northwest corner of Section 21; Thence N87°40'35"E, along the North line of the NW1/4 of said section, 461.49 feet; Thence S06°19'08"E, 403.17 feet; Thence N89°41'14"E, 239.36 feet; Thence S31°55'36"E, 192.10 feet; Thence N87°40'35"E, 42.91 feet to a meander corner which lies S87°40'35"W, 106 feet more or less from the center of the West Branch Eau Claire River; Thence S57°34'29"E, along a meander line, 231.75 feet; Thence N54°30'31"E, along a meander line, 330.56 feet to a meander corner which lies S03°06'16"E, 60 feet more or less from the center of said river; Thence S32°52'15"E, along a meander line, 710.21 feet to a meander corner which lies N89°27'00"W, 66 feet more or less from the center of said river; Thence S18°00'28"W, along a meander line, 587.28 feet; Thence S40°00'27"E, along a meander line, 779.44 feet to a meander corner which lies N86°28'39"W, 40 feet more or less from the center of said river; Thence N86°28'39"W, along the South line of the NW1/4 of said section, 1895.55 feet; Thence N04°31'42"W, along the West line of the NW1/4 of said section, 2116.53 feet to the Point of Beginning.

That this survey was for the purpose of locating property boundaries and certain topographic features only. Other geographical features were not mapped.

That this is a true and correct representation of the boundaries and certain topographic features surveyed to the best of my knowledge and belief.