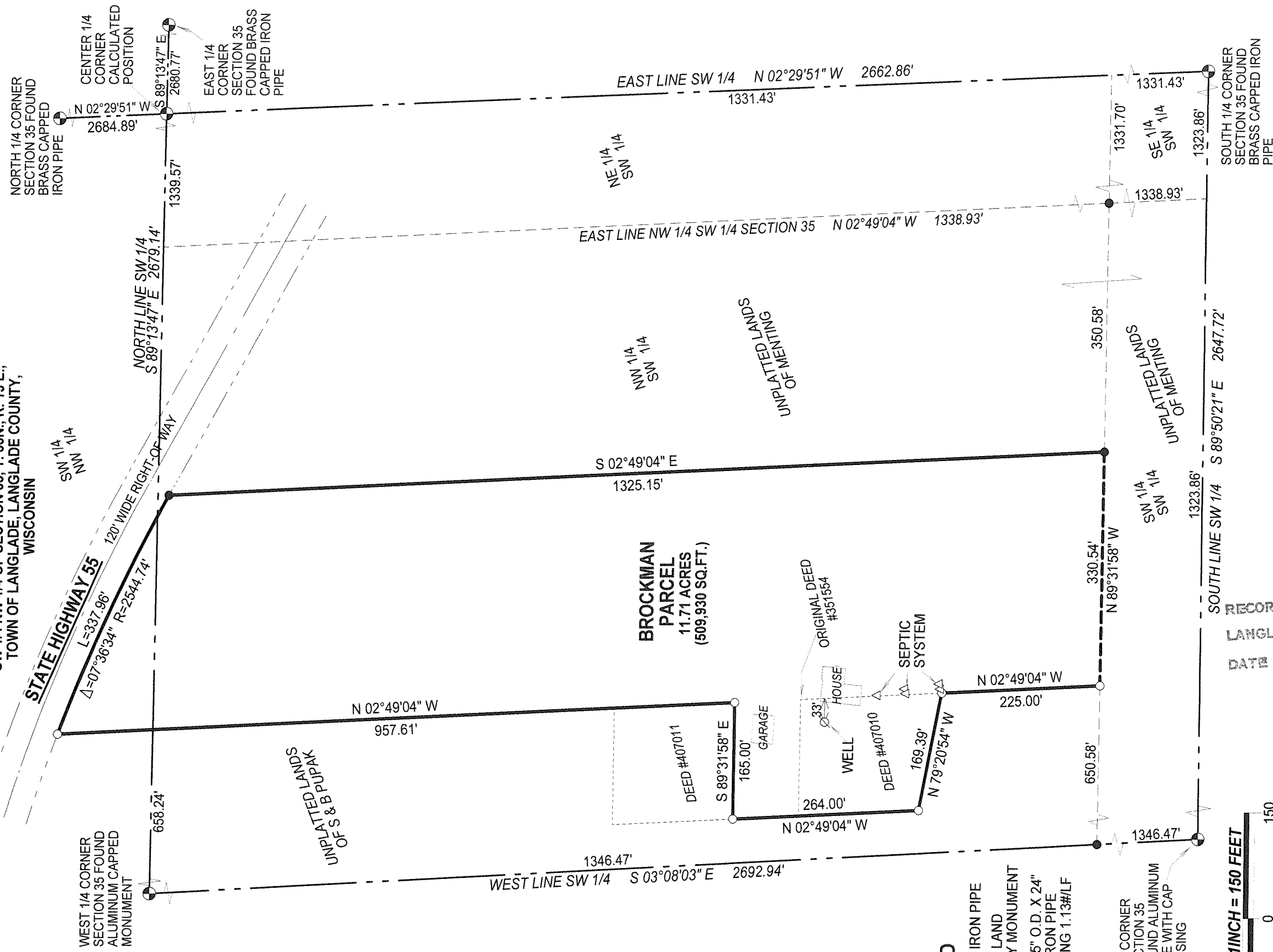


BEARINGS REFERENCED TO THE LANGLADE COUNTY COORDINATE SYSTEM GRID

PLAT OF SURVEY

PART OF THE NW 1/4 OF THE SW 1/4 AND THE SW 1/4 NW 1/4 OF SECTION 35, T. 33N., R. 13 E., TOWN OF LANGLADE, LANGLADE COUNTY, WISCONSIN



NORTH 1/4 CORNER SECTION 35 FOUND BRASS CAPPED IRON PIPE
 CENTER 1/4 CORNER CALCULATED POSITION
 EAST 1/4 CORNER SECTION 35 FOUND BRASS CAPPED IRON PIPE
 SOUTH 1/4 CORNER SECTION 35 FOUND BRASS CAPPED IRON PIPE

STATE HIGHWAY 55
 $L=337.96'$
 $\Delta=07^{\circ}36'34''$ $R=2544.74'$

WEST 1/4 CORNER SECTION 35 FOUND ALUMINUM CAPPED MONUMENT

UNPLATTED LANDS OF S & B DDP&P&K

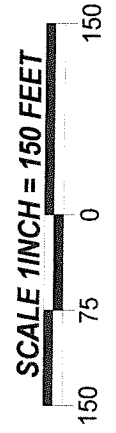
BROCKMAN PARCEL
 11.71 ACRES
 (509,930 SQ.FT.)

NW 1/4 SW 1/4
 UNPLATTED LANDS OF GIMMELT

UNPLATTED LANDS OF GIMMELT

SW CORNER SECTION 35 FOUND ALUMINUM PIPE WITH CAP MISSING

- LEGEND**
- FOUND IRON PIPE
 - ⊙ PUBLIC LAND SURVEY MONUMENT
 - SET 1.05" O.D. X 24" LONG IRON PIPE WEIGHING 1.13#/LF

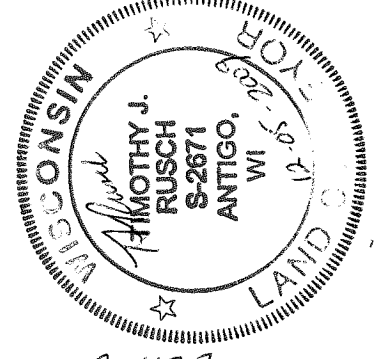


I, TIMOTHY J. RUSCH, REGISTERED LAND SURVEYOR, DO HEREBY CERTIFY:

THAT I HAVE SURVEYED AND MAPPED BY THE ORDER OF WALT BROCKMAN, OWNER, A PARCEL BEING A PART OF SW 1/4 AND NW 1/4 OF SECTION 35, T33N-R13E.

THAT THIS SURVEY WAS FOR THE PURPOSE OF LOCATING PROPERTY BOUNDARIES ONLY. OTHER GEOGRAPHICAL FEATURES WERE NOT MAPPED.

THAT THIS IS A TRUE AND CORRECT REPRESENTATION OF THE BOUNDARIES SURVEYED TO THE BEST OF MY KNOWLEDGE AND BELIEF.



RECORD # 20433
 LANGLADE COUNTY SURVEYORS OFFICE
 DATE FILED: 8/13 BY: D. TUSZY

SURVEYED BY:
 RUSCH ENGINEERING & SURVEYING LLC
 400 RUSCH ROAD
 ANTIGO, WI 54409
 (715) 623-5044
 PROJECT # 07-4695