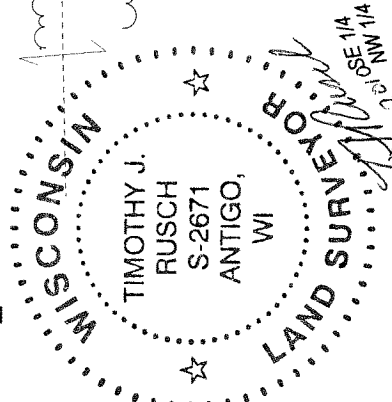
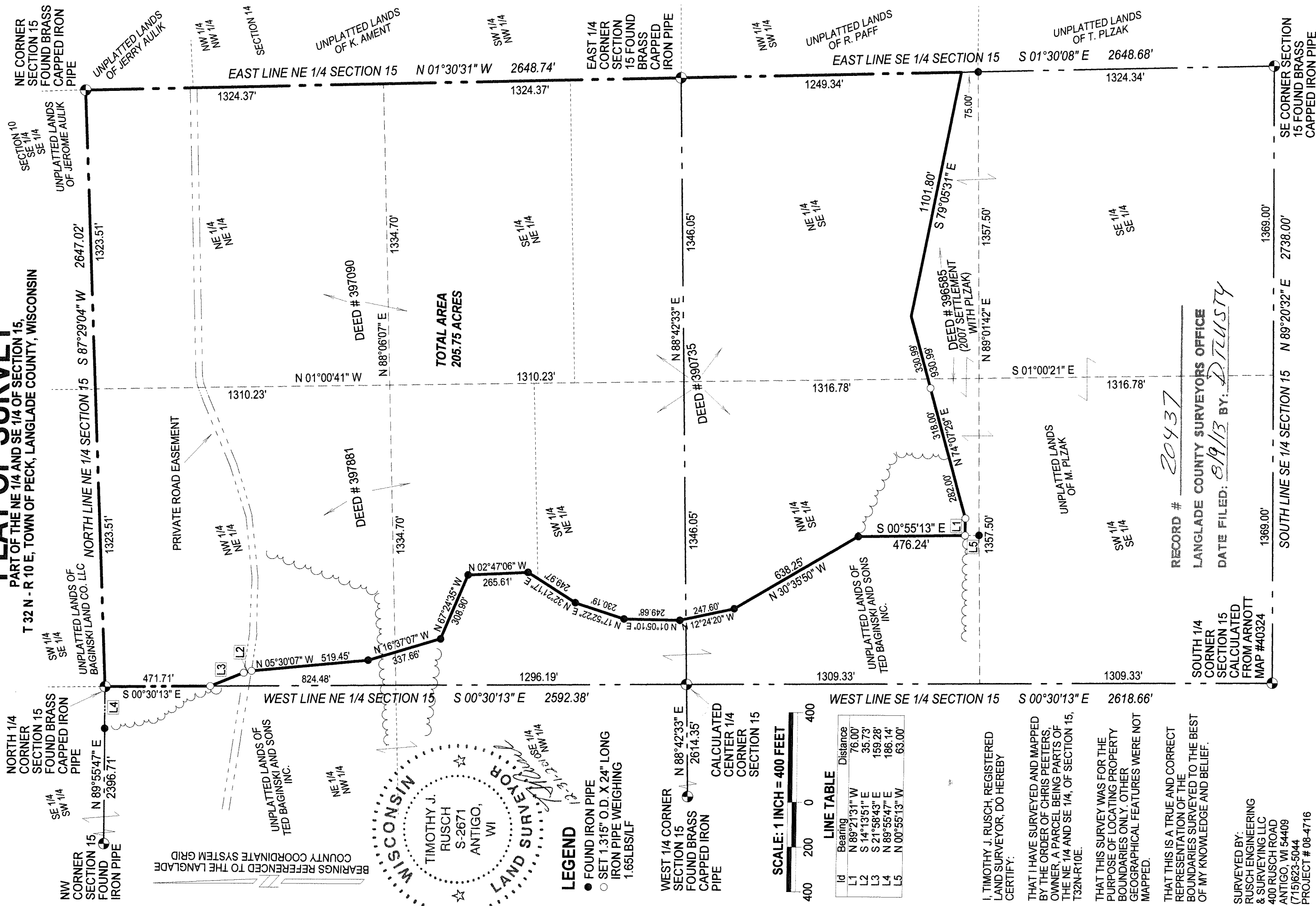


PLAT OF SURVEY

PART OF THE NE 1/4 AND SE 1/4 OF SECTION 15,
T 32 N - R 10 E, TOWN OF PECK, LANGLADE COUNTY, WISCONSIN



LEGEND

- FOUND IRON PIPE
- SET 1.315" O.D. X 24" LONG IRON PIPE WEIGHING 1.65LBS/LF

WEST 1/4 CORNER SECTION 15
 FOUND BRASS CAPPED IRON PIPE
 CALCULATED CENTER 1/4 CORNER SECTION 15

SCALE: 1 INCH = 400 FEET



LINE TABLE

Id	Bearing	Distance
L1	N 89°21'31" W	76.00'
L2	S 14°13'51" E	35.73'
L3	S 21°58'43" E	159.28'
L4	N 89°55'47" E	186.14'
L5	N 00°55'13" W	63.00'

I, TIMOTHY J. RUSCH, REGISTERED LAND SURVEYOR, DO HEREBY CERTIFY.

THAT I HAVE SURVEYED AND MAPPED BY THE ORDER OF CHRIS PEETERS, OWNER, A PARCEL BEING PARTS OF THE NE 1/4 AND SE 1/4, OF SECTION 15, T32N-R10E.

THAT THIS SURVEY WAS FOR THE PURPOSE OF LOCATING PROPERTY BOUNDARIES ONLY. OTHER GEOGRAPHICAL FEATURES WERE NOT MAPPED.

THAT THIS IS A TRUE AND CORRECT REPRESENTATION OF THE BOUNDARIES SURVEYED TO THE BEST OF MY KNOWLEDGE AND BELIEF.

SURVEYED BY:
 RUSCH ENGINEERING & SURVEYING LLC
 400 RUSCH ROAD
 ANTIGO, WI 54409
 (715)623-5044
 PROJECT # 08-4716

RECORD # 20437
 LANGLADE COUNTY SURVEYORS OFFICE
 DATE FILED: 8/19/13 BY: D. LUSTY

SOUTH 1/4 CORNER SECTION 15 CALCULATED FROM ARNOTT MAP #40324

SOUTH LINE SE 1/4 SECTION 15 N 89°20'32" E 2738.00'

1369.00'

1369.00'

SE CORNER SECTION 15 FOUND BRASS CAPPED IRON PIPE