

# MAP OF SURVEY

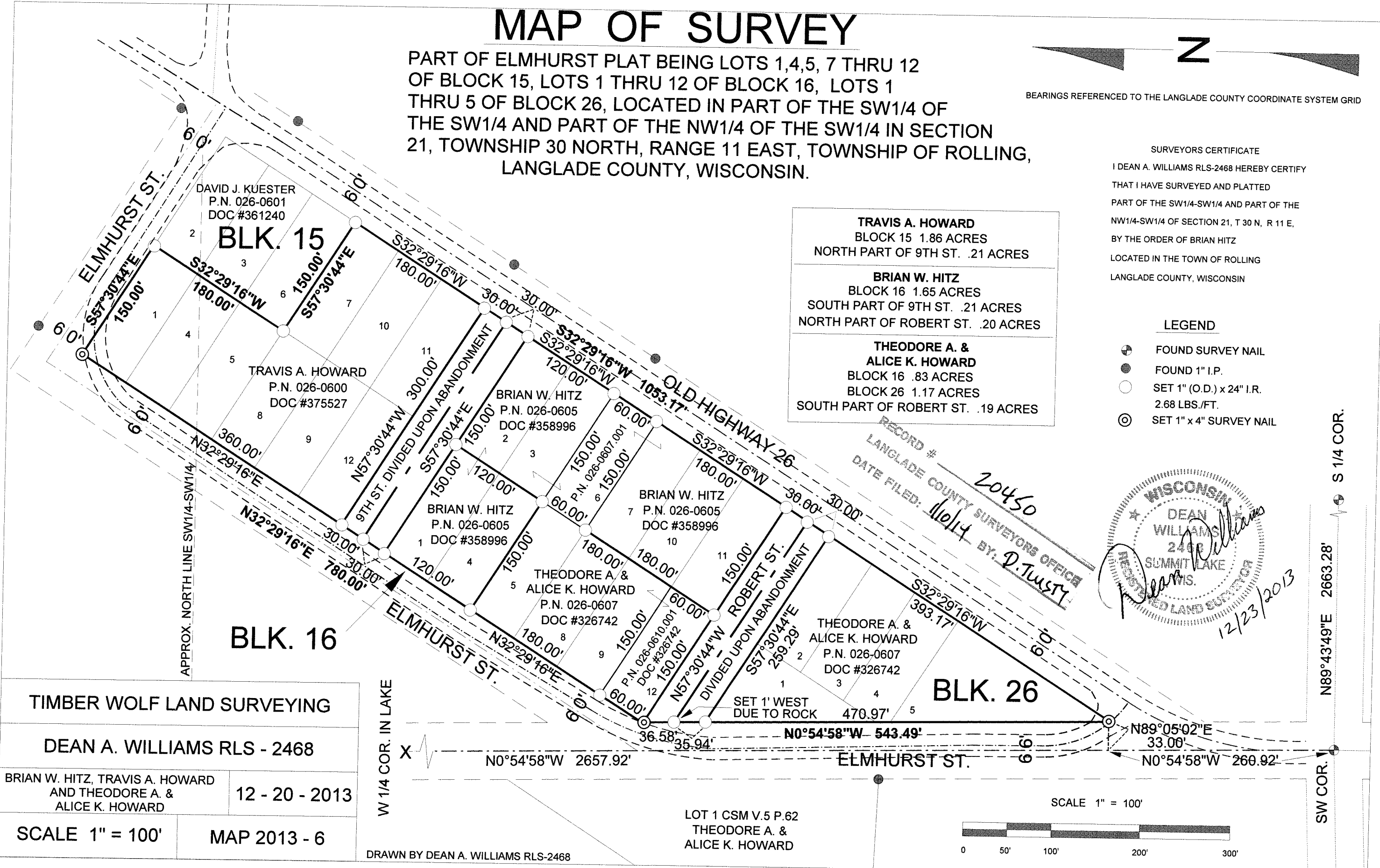
PART OF ELMHURST PLAT BEING LOTS 1,4,5, 7 THRU 12 OF BLOCK 15, LOTS 1 THRU 12 OF BLOCK 16, LOTS 1 THRU 5 OF BLOCK 26, LOCATED IN PART OF THE SW1/4 OF THE SW1/4 AND PART OF THE NW1/4 OF THE SW1/4 IN SECTION 21, TOWNSHIP 30 NORTH, RANGE 11 EAST, TOWNSHIP OF ROLLING, LANGLADE COUNTY, WISCONSIN.



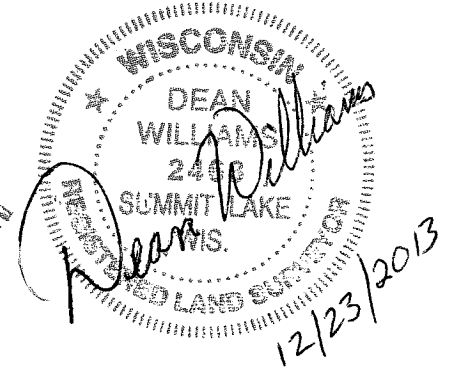
**SURVEYORS CERTIFICATE**  
 I DEAN A. WILLIAMS RLS-2468 HEREBY CERTIFY THAT I HAVE SURVEYED AND PLATTED PART OF THE SW1/4-SW1/4 AND PART OF THE NW1/4-SW1/4 OF SECTION 21, T 30 N, R 11 E, BY THE ORDER OF BRIAN HITZ LOCATED IN THE TOWN OF ROLLING LANGLADE COUNTY, WISCONSIN

<b>TRAVIS A. HOWARD</b> BLOCK 15 1.86 ACRES NORTH PART OF 9TH ST. .21 ACRES
<b>BRIAN W. HITZ</b> BLOCK 16 1.65 ACRES SOUTH PART OF 9TH ST. .21 ACRES NORTH PART OF ROBERT ST. .20 ACRES
<b>THEODORE A. &amp; ALICE K. HOWARD</b> BLOCK 16 .83 ACRES BLOCK 26 1.17 ACRES SOUTH PART OF ROBERT ST. .19 ACRES

- LEGEND**
- ⊙ FOUND SURVEY NAIL
  - FOUND 1" I.P.
  - SET 1" (O.D.) x 24" I.R. 2.68 LBS./FT.
  - ⊙ SET 1" x 4" SURVEY NAIL



RECORD # 20450  
 LANGLADE COUNTY SURVEYORS OFFICE  
 DATE FILED: 11/14 BY: D. TRUSTY

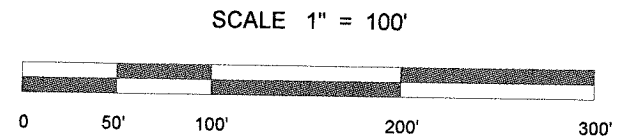


TIMBER WOLF LAND SURVEYING	
DEAN A. WILLIAMS RLS - 2468	
BRIAN W. HITZ, TRAVIS A. HOWARD AND THEODORE A. & ALICE K. HOWARD	12 - 20 - 2013
SCALE 1" = 100'	MAP 2013 - 6

W 1/4 COR. IN LAKE

DRAWN BY DEAN A. WILLIAMS RLS-2468

LOT 1 CSM V.5 P.62  
 THEODORE A. & ALICE K. HOWARD



S 1/4 COR. N89°43'49"E 2663.28'