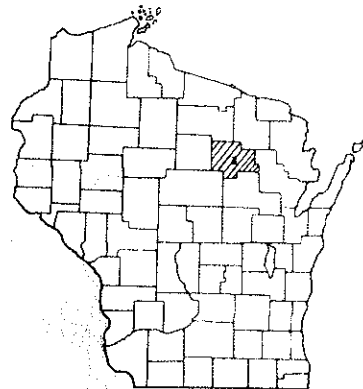


INDEX OF SHEETS

- SHEET NO. 1 TITLE
- SHEET NO. 2-3 TYPICAL CROSS SECTIONS
- SHEET NO. 3 ESTIMATE OF QUANTITIES
- SHEET NO. 3A MISCELLANEOUS QUANTITIES
- SHEET NO. — RIGHT OF WAY PLAT
- SHEET NO. 4-7 PLAN AND PROFILE STA. 290 + 40 TO STA. 385 + 46
- SHEET NO. 8-8.5 STANDARD DETAILS
- SHEET NO. — DRAINAGE STRUCTURES
- SHEET NO. 9-18 MACHINE COMPUTATIONS



STATE OF WISCONSIN  
STATE HIGHWAY COMMISSION OF WISCONSIN

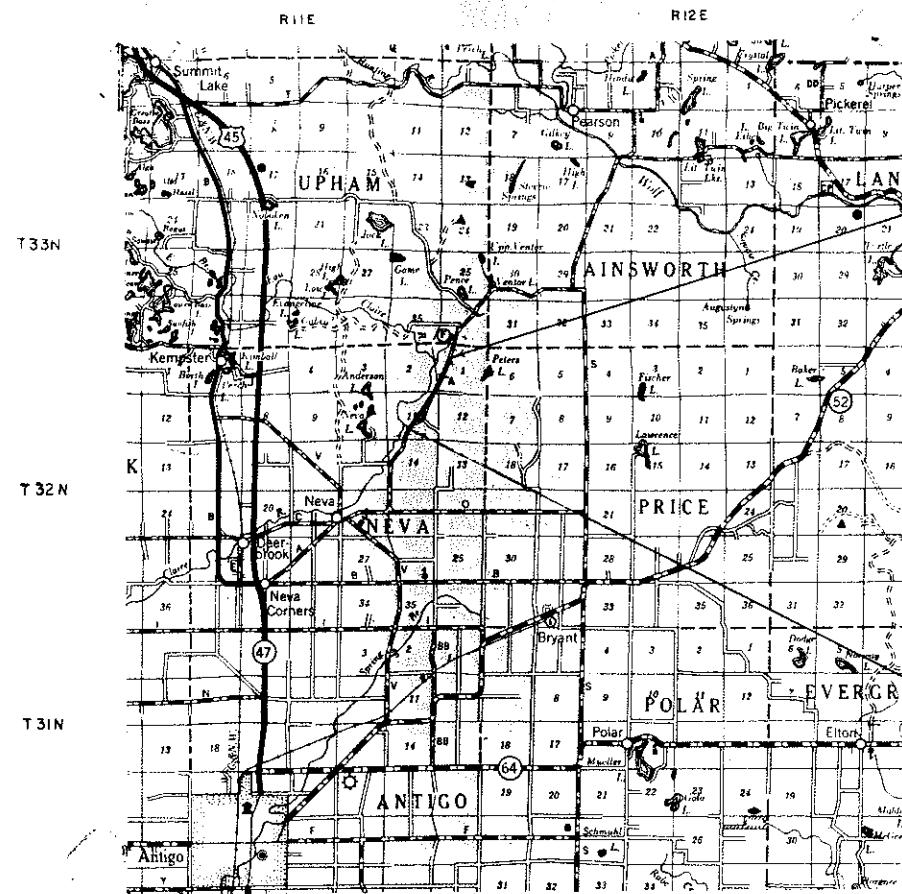
PLAN AND PROFILE OF PROPOSED  
NEVA — WOLF RIVER ROAD  
C.T.H. "A"  
LANGLADE COUNTY  
PROJECT S0937(5)

COUNTY AND HIGHWAY	ROUTE AND SECTION	CLASS AND AGREEMENT		FEDERAL DIVISION OFFICE	SHEET NUMBER
		STATE	FEDERAL		
34.6	937.0		115	WIS. 4	1

3

Old Dump Rd (Old "A" Rd) to Krame

SCALES PLAN 1 IN. = 100 FT.  
PROFILE HOR. 1 IN. = 100 FT. VERT. 1 IN. = 10 FT.  
CROSS SECTIONS HOR. 1 IN. = 5 FT. VERT. 1 IN. = 5 FT.



END OF PROJECT S 0937(5) STA. 385 + 46  
1276.9' S. 8 390.4' W. OF THE N. 1/4 COR. SEC. 1, T.32N., R.11E.

BEGINNING OF PROJECT S0937(5) STA. 290 + 40 =  
STA. 290 + 40, END PROJ. S0937(3)  
1135' N. 8 540' W. OF THE S 1/4 COR. SEC. 11, T.32N., R.11E.

LAYOUT  
SCALE 2 MILES  
TOTAL NET LENGTH OF CENTERLINE = 1.800 MI

DESIGN DESIGNATION

ADT (1966)	- 500
ADT (1986)	- 1,000
DHV	- 150
D	- 65%
T	- 15%
V	- 50MPH

CONVENTIONAL SIGNS

LINE	-----	CULVERTS IN PLACE	-----
Y LINE	-----	CULVERTS REQUIRED	-----
HP OR RANGE LINE	-----	DROP INLET	-----
N LINE	-----	POWER POLE	-----
HT OF WAY LINE	-----	TELEPHONE OR TELEGRAPH POLE	-----
T RIGHT OF WAY LINE	-----	RIGHT OF WAY MARKERS	-----
ENCE / WOVEN	-----	REFERENCE STAKE FOR HUBS ONLY	-----
ENCE / BARBED	-----	MARSH	-----
NE	-----	HEDGE	-----
RATE OR CITY LIMITS	-----	TREES	-----
ERTY LINE	-----	GROUND ELEVATION	-----
ELED WAY OR P.E.	-----	GRADE ELEVATION	-----
ROADS	-----		
OR SURVEY LINE	-----		

RECORD # 20459 115  
 LANGLADE COUNTY SURVEYORS OFFICE  
 DATE FILED: 11/14 BY: RT

385 + 46  
 290 + 40  
 -----  
 95.06

STATE HIGHWAY COMMISSION OF WISCONSIN  
MADISON, WIS.

SURVEYOR: JOHNSON      DISTRICT: 238239  
 DIVISION: CHARLES MC NOWN      W. H.  
 DISTRICT: CHELSEA S. WINAT      CORRECT

CORRECT:  
 DATE: 7/16/66      *Max Smith*  
 DISTRICT ENGINEER

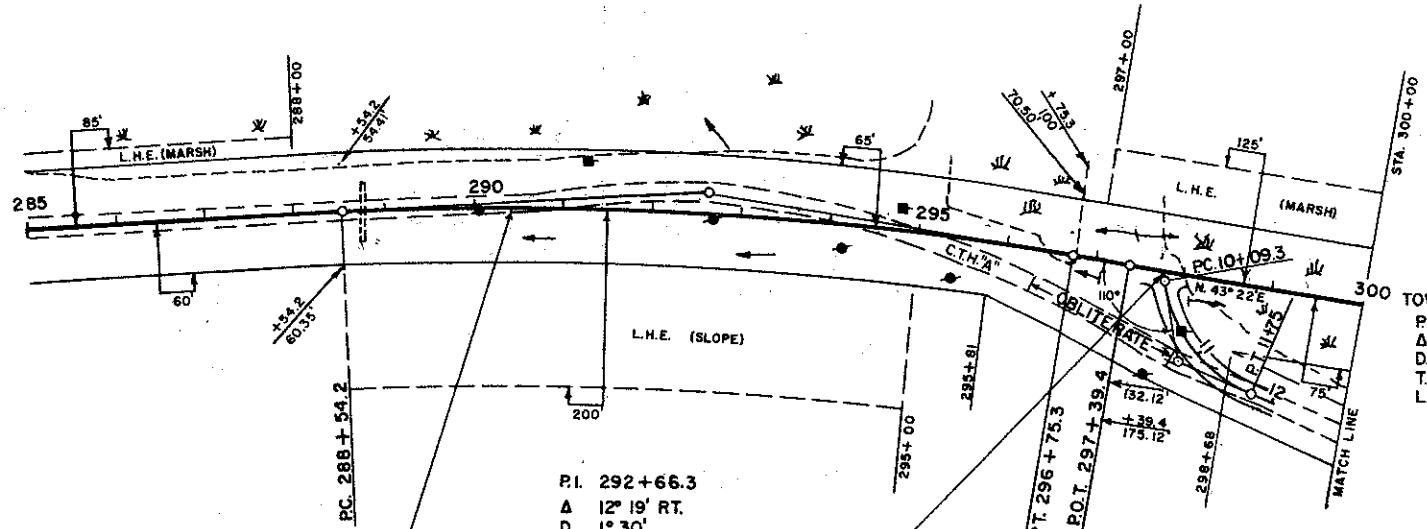
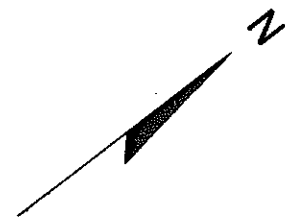
RECOMMENDED FOR APPROVAL:  
 DATE: 8/10/66      *E. J. Byrd*  
 DISTRICT ENGINEER

APPROVED:  
 DATE: 8/11/66      *H. J. Durman*  
 DISTRICT ENGINEER

DEPARTMENT OF COMMERCE  
BUREAU OF PUBLIC ROADS

APPROVED: \_\_\_\_\_  
 DATE: \_\_\_\_\_

OBLITERATE OLD ROAD  
 STA. 296+40 - STA. 298+05 = 1.8 STA.



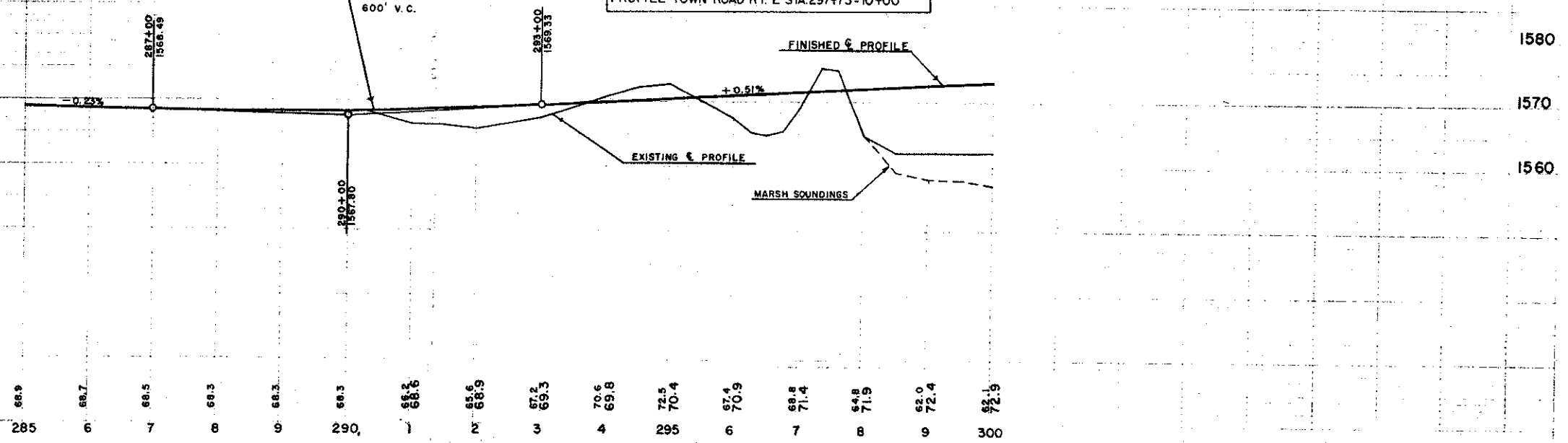
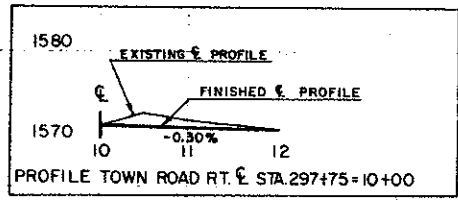
P.I. 292+66.3  
 Δ 12° 19' RT.  
 D 1° 30'  
 T 412.14'  
 L 821.1'  
 S.E. 0.027'/FT.  
 R.O. 150'

TOWN ROAD RT.  
 P.I. 11+00  
 Δ 58° LT.  
 D 35°  
 T 90.7'  
 L 165.7'

BENCH MARKS			
NO.	STATION	DESCRIPTION	ELEV.
28	289+15	SPIKE IN 16" TAMARACK	85' LT. 1563.20
29	296+15	SPIKE IN 10" ASPEN	125' RT. 1575.91

NET CENTERLINE LENGTH STA. 290+40 - 300+00 = 960.00 LIN. FT.

UNCL. 29498 CU.YDS.  
 FILL 21840 CU.YDS.  
 SHG 35%  
 MARSH 8122 CU.YDS.



285 68.9  
 6 68.7  
 7 68.5  
 8 68.3  
 9 68.3  
 290 68.3  
 1 68.6  
 2 68.9  
 3 69.3  
 4 70.6  
 295 70.4  
 6 70.9  
 7 69.8  
 8 71.9  
 9 72.4  
 300 72.9

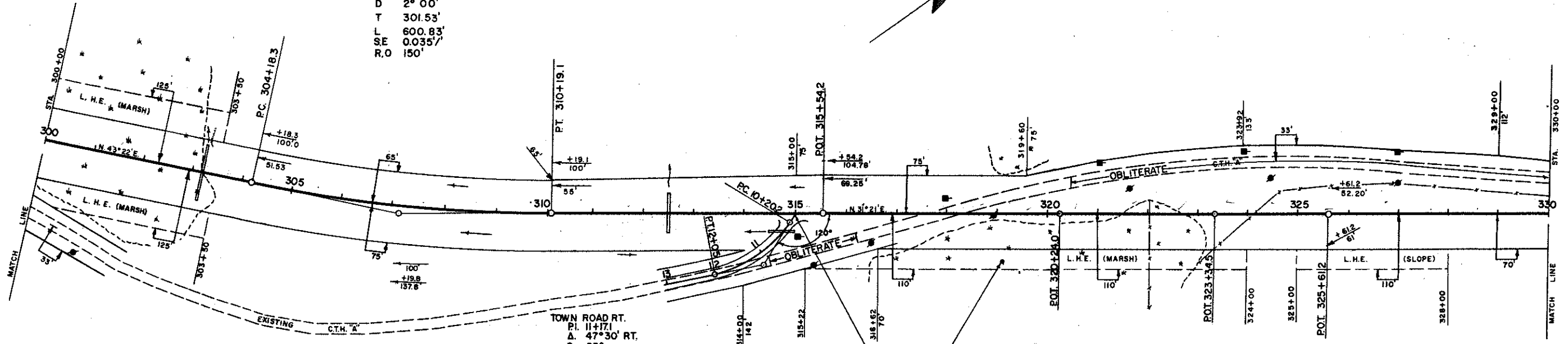
*old Dump Rd (old A Rd)*

RECORD # 20459 2/5  
 LANGLADE COUNTY SURVEYORS OFFICE  
 DATE FILED: 7/1/14 BY: DT

PI. 307+19.8  
 Δ 12° 01' LT.  
 D 2° 00'  
 T 301.53'  
 L 600.83'  
 SE 0.0357'  
 R.O 150'

OBLITERATE OLD ROAD  
 STA. 314+50-316+20=1.8 STA.

OBLITERATE OLD ROAD  
 STA. 320+45-330+00=9.6 STA.



TOWN ROAD RT.  
 PI. 11+17.1  
 Δ 47° 30' RT.  
 D. 23°  
 T. 99.6'  
 L. 190.0'

STA. 315+00 TOWN ROAD RT RESTORE  
 1-18"X50" C.P CLASS III REQ'D.  
 TYPE "E" INTERSECTION REQ'D.

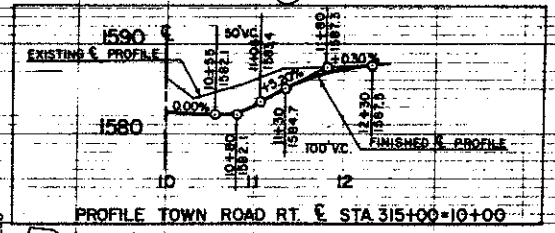
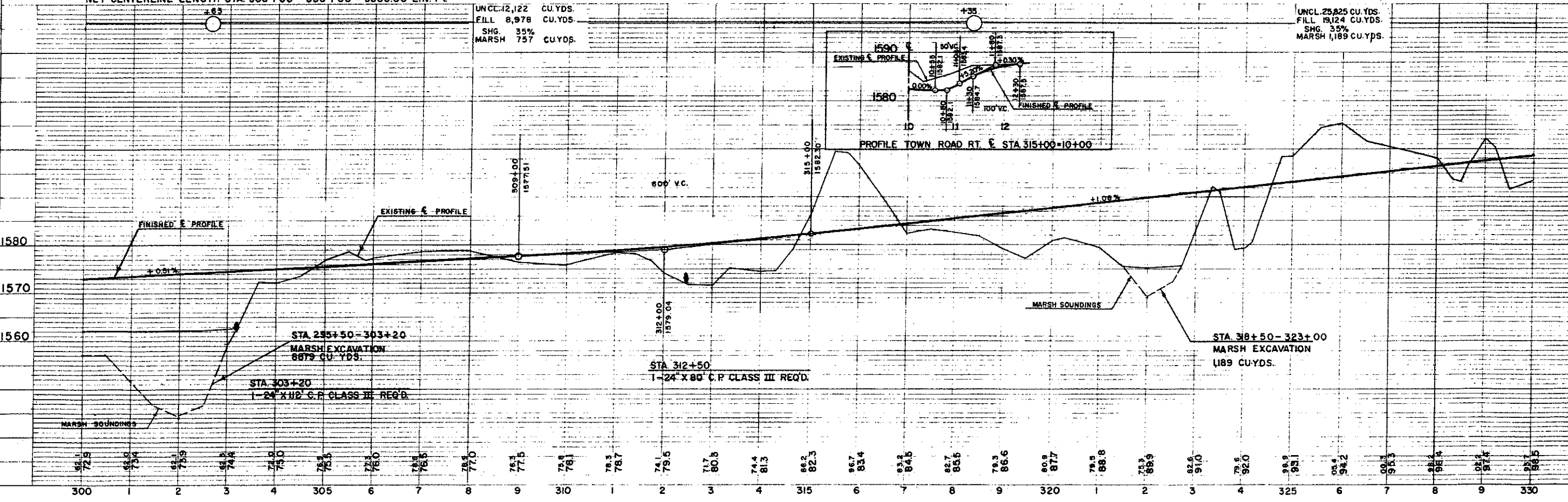
IRON PIPE  
 2 LANDMARK REFERENCE MONUMENTS REQ'D.

NO	STATION	DESCRIPTION	ELEV.
29	296+15	SPIKE IN 10" ASPEN 125' RT.	1575.91
30	307+50	SPIKE IN 10" ASPEN 140' LT.	1576.85
31	315+15	SPIKE IN 12" ASPEN 100' LT.	1588.91
32	325+75	SPIKE IN 6" WHITE BIRCH 145' LT.	1592.81
33	335+40	SPIKE IN 5" ELM 110' LT.	1600.85

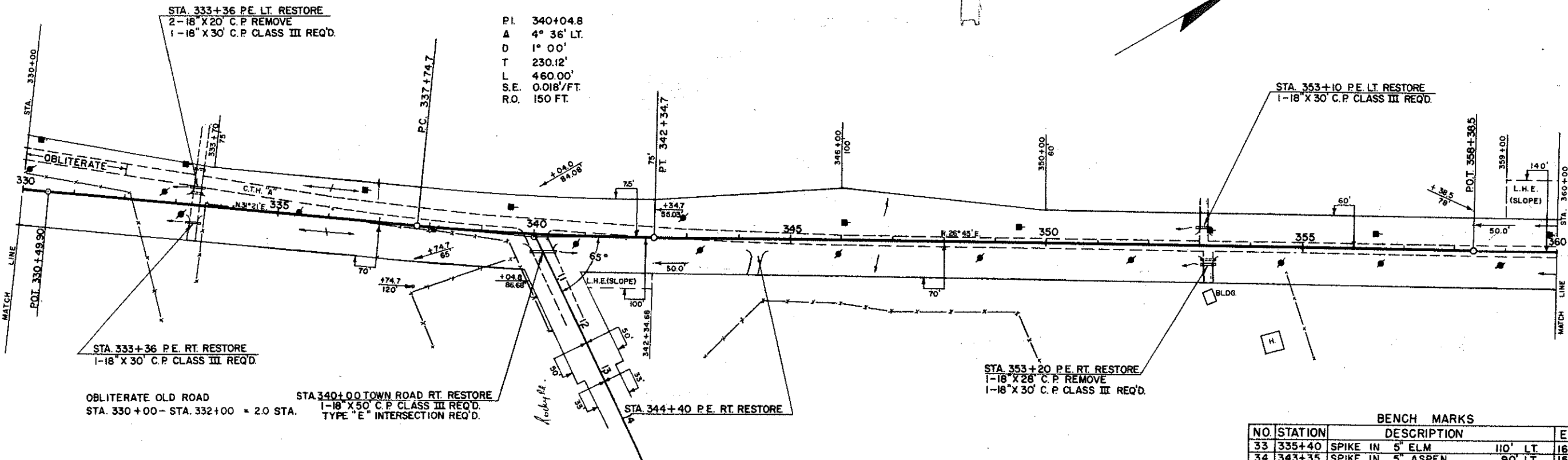
NET CENTERLINE LENGTH STA. 300+00 - 330+00 = 3000.00 LIN. FT

UNCL. 12,122 CU.YDS.  
 FILL 8,978 CU.YDS.  
 SHG. 35%  
 MARSH 757 CU.YDS.

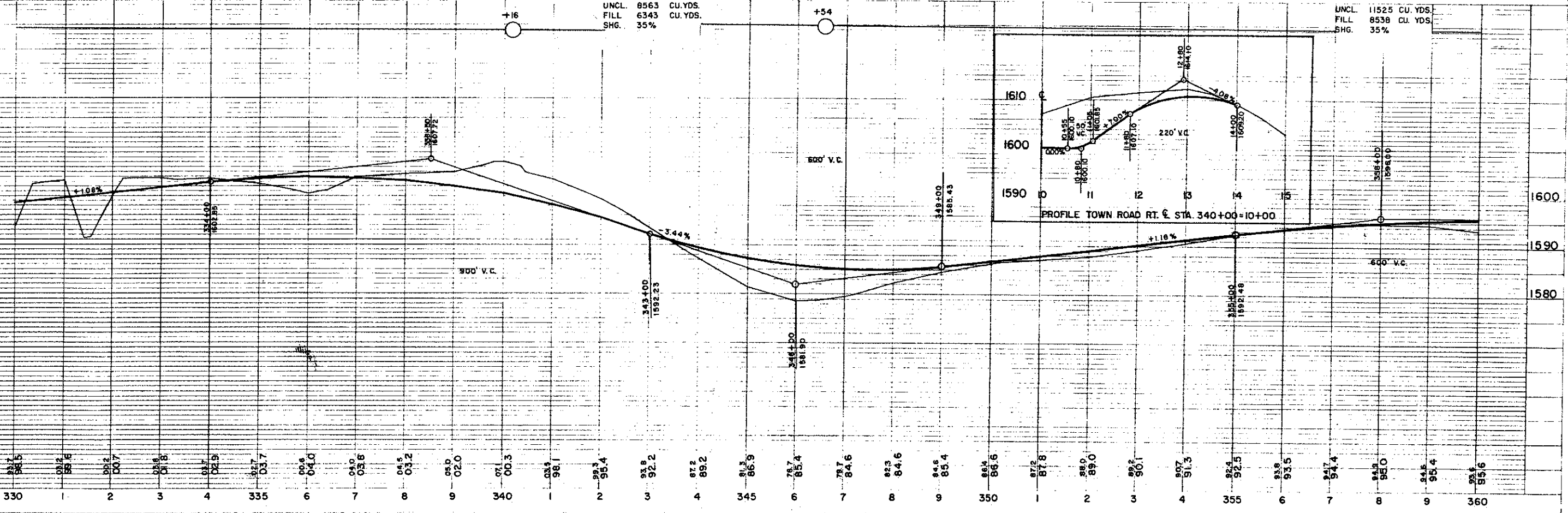
UNCL. 25,825 CU.YDS.  
 FILL 19,124 CU.YDS.  
 SHG. 35%  
 MARSH 1,189 CU.YDS.



RECORD # 20459 3/5  
 LANGLADE COUNTY SURVEYORS OFFICE  
 DATE FILED: 7/11/14 BY: DJ



NET CENTERLINE LENGTH STA. 330+00 - 360+00 = 3000.00 LIN. FT.

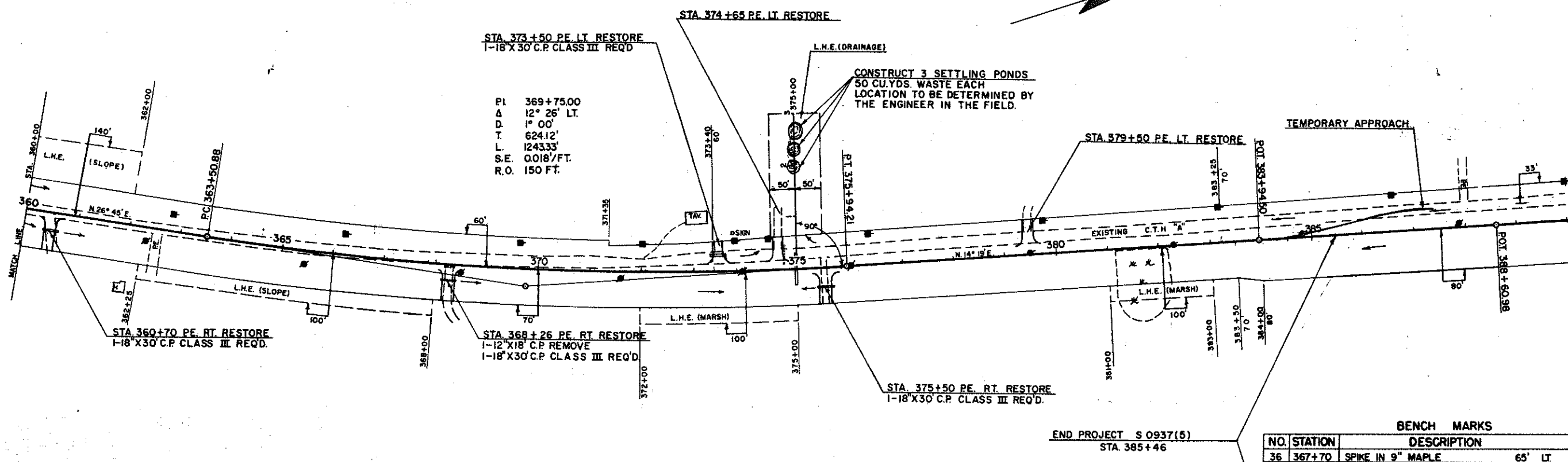


BENCH MARKS			
NO.	STATION	DESCRIPTION	ELEV.
33	335+40	SPIKE IN 5" ELM 110' LT.	1600.89
34	343+35	SPIKE IN 5" ASPEN 90' LT.	1591.20
35	358+35	SPIKE IN 5" ASPEN 50' LT.	1594.07

PLAN & PROFILE STA 330+00 - STA 360+00

RECORD # 20459 4/5  
 LANGLADE COUNTY SURVEYORS OFFICE  
 DATE FILED: 7/1/14 BY: D.T

B. P. R. DIVISION	PROJECT	SHEET NUMBER
	S 0937(5)	7



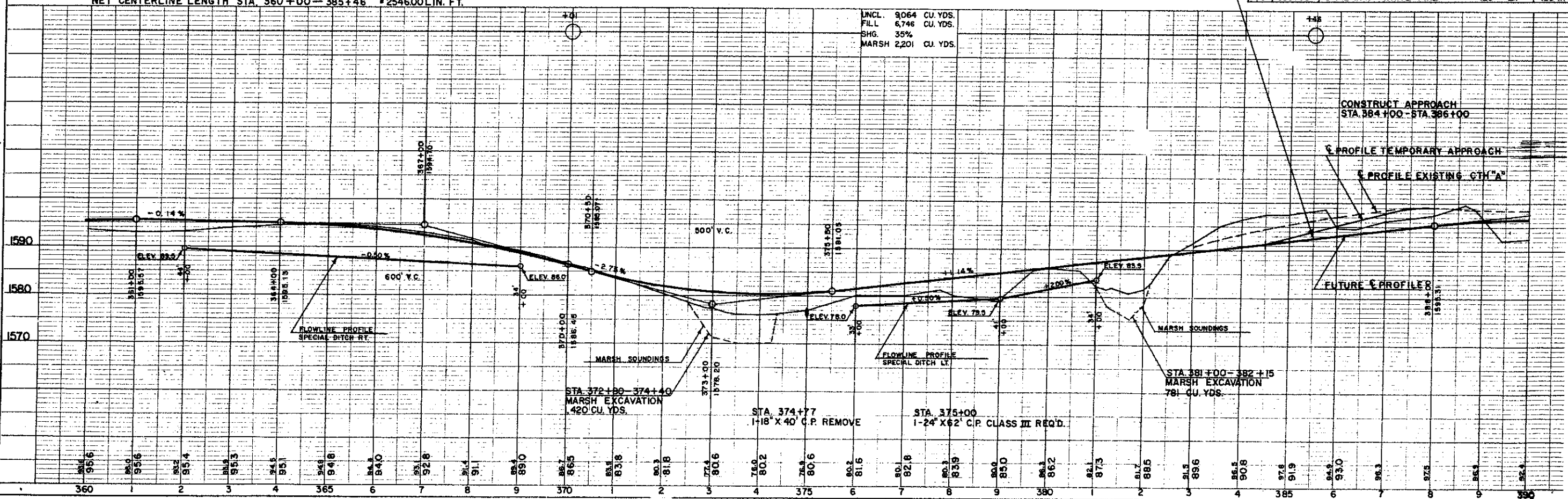
PI 369+75.00  
 Δ 12° 26' LT.  
 D 1° 00'  
 T 624.12'  
 L 1243.33'  
 S.E. 0.018'/FT.  
 R.O. 150 FT.

END PROJECT S 0937(5)  
 STA 385+46

BENCH MARKS			
NO.	STATION	DESCRIPTION	ELEV.
36	367+70	SPIKE IN 9" MAPLE 65' LT.	1585.9
37	377+10	SPIKE IN 13" MAPLE 100' LT.	1575.3
38	386+35	SPIKE IN 17" WHITE PINE 125' LT.	1594.7

NET CENTERLINE LENGTH STA. 360+00 - 385+46 = 2546.00 LIN. FT.

UNCL. 9,064 CU. YDS.  
 FILL 6,746 CU. YDS.  
 SHG. 35%  
 MARSH 2,201 CU. YDS.



RECORD # 20459 515  
 LANGLADE COUNTY SURVEYORS OFFICE  
 DATE FILED: 7/11/14 BY: D.T.