

TIMBER WOLF LAND SURVEYING - DEAN A. WILLIAMS RLS - 2468 715-627-2500

MAP OF SURVEY NE1/4 7-33-11

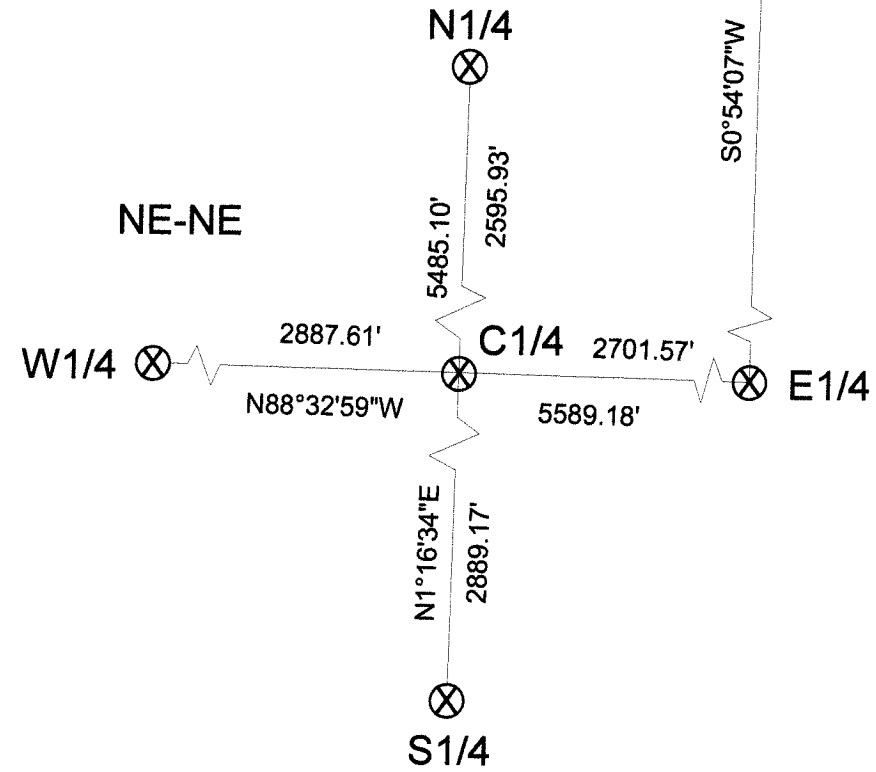
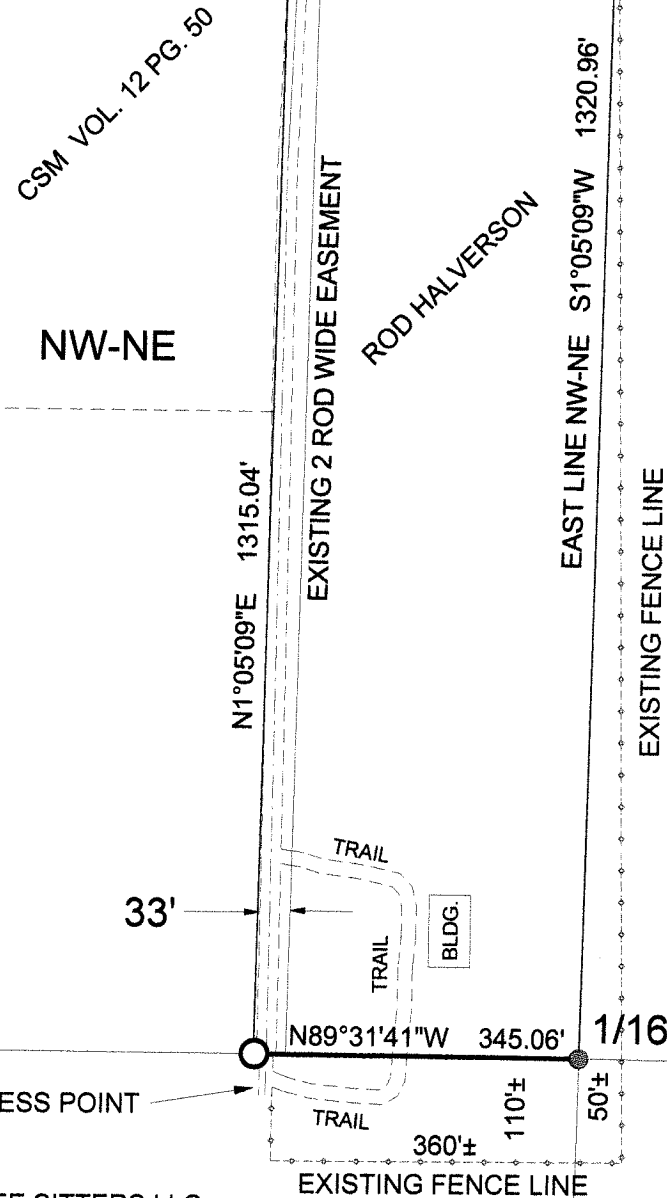
N1/4 N89°29'21"E 2685.31' NE COR.
N89°29'21"E 997.54' N89°29'21"E 345.11' N89°29'21"E 1342.65'

BEARINGS REFERENCED
TO THE NORTH LINE OF THE NE1/4
OF SECTION 7, T33N, R11E,
ASSUMED TO BEAR: N89°29'21"E

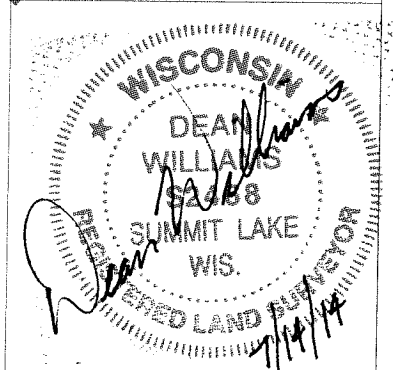


SURVEYORS CERTIFICATE
I, DEAN A. WILLIAMS RLS-2468 HEREBY CERTIFY THAT I HAVE SURVEYED UNDER THE DIRECTION OF RICHARD GROMOWSKI, A DEED LINE BEING THE SOUTH LINE OF THE EAST 10 ACRES AND AN EASEMENT WITH ACCESS ACROSS THE NW1/4-NE1/4, TO THE S1/2 OF THE NE1/4, SECTION 7, T33N, R11E, TOWN OF UPHAM, LANGLADE COUNTY, WISCONSIN.

I FURTHER CERTIFY THAT THIS MAP IS A TRUE AND CORRECT REPRESENTATION, TO THE BEST OF MY KNOWLEDGE AND BELIEF ACCORDING TO OFFICIAL RECORDS AND THAT I HAVE COMPLIED WITH THE REGULATIONS OF LANGLADE COUNTY.



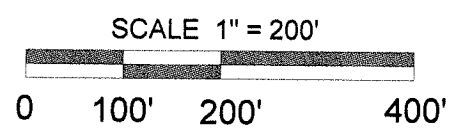
RECORD # 20468
LANGLADE COUNTY SURVEYORS OFFICE
DATE FILED: 8/6/14 BY: D. TUSTY



- LEGEND**
- ⊗ FOUND CORNER LOCATION BY TIES
 - FOUND 1" I.P.
 - SET 1" x 24" I.R. 3.68 LBS/FT

ACCESS POINT
TREE SITTERS LLC
SW-NE

TREE SITTERS LLC
SE-NE



DRAFTED BY DEAN A. WILLIAMS RLS 2468

TIMBER WOLF LAND SURVEYING	
DEAN A. WILLIAMS RLS-2468	
GROMOWSKI	
7/14/2014	MAP# 2014 - 13