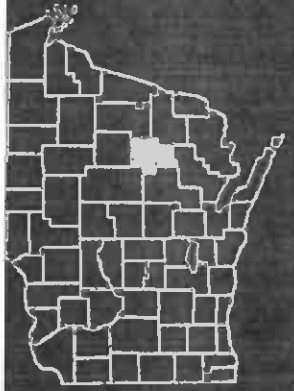


INDEX OF SHEETS

- 1 TITLE
- 2 TYPICAL CROSS SECTIONS
- 3 ESTIMATE OF QUANTITIES
- 4A MISCELLANEOUS QUANTITIES
- 5 RIGHT OF WAY PLAT
- 6-5 PLAN AND PROFILE STA. 6+71 TO STA. 73+10
- 10 STANDARD DETAILS
- 11 DRAINAGE STRUCTURES
- 19 CROSS SECTIONS



STATE OF WISCONSIN
STATE HIGHWAY COMMISSION OF WISCONSIN

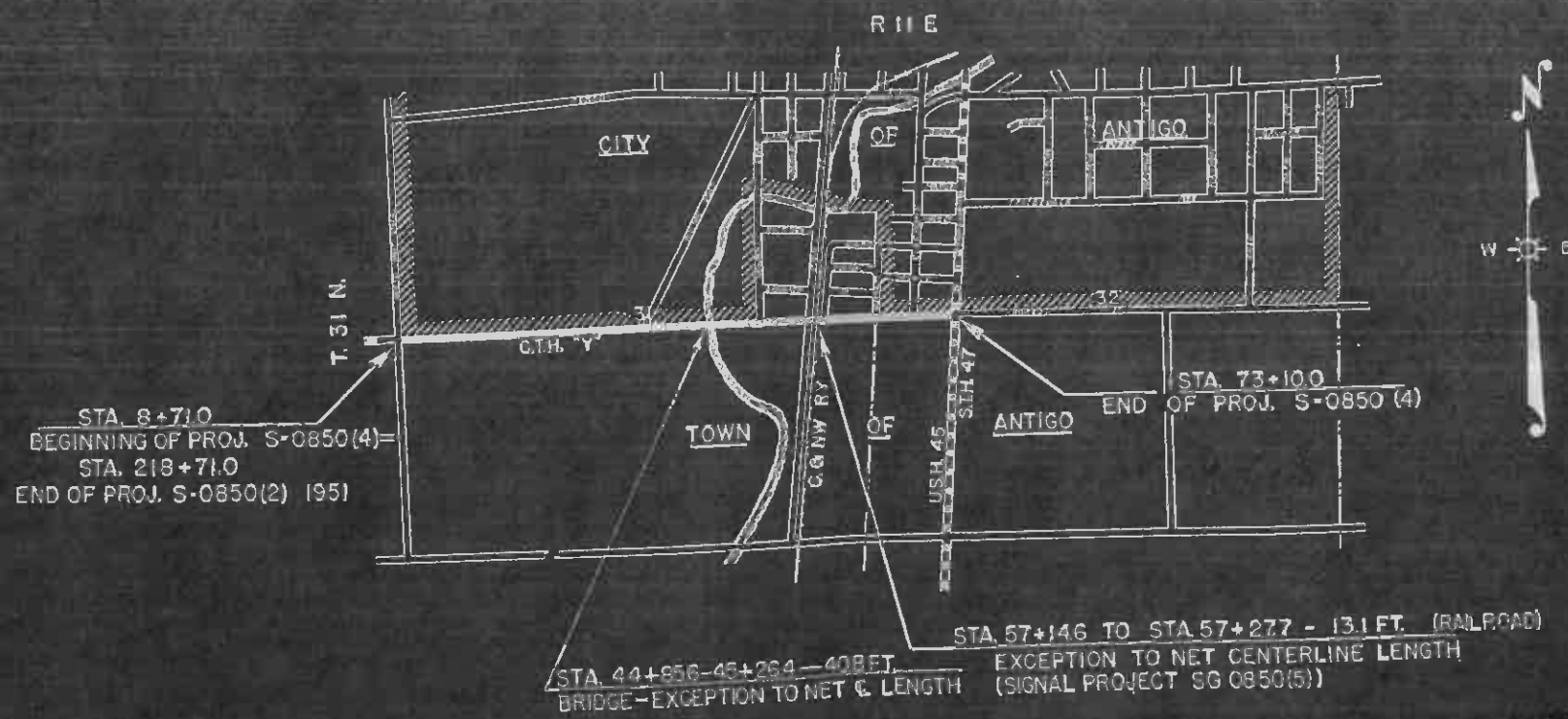
PLAN AND PROFILE OF PROPOSED
HOGARTY - ANTIGO ROAD
C.T.H. "Y"
LANGLADE COUNTY
PROJECT S 0850 (4)

BEGINNING AT THE WEST 1/4 CORNER OF SECTION 31, T.31N., R.11E., AND
EXTENDING EAST TO THE INTERSECTION OF FOREST STREET CENTERLINE
AND THE WEST LINE OF U.S.H. 45 ON THE SOUTH CITY LIMITS OF ANTIGO.

SCALES (PLAN 1 IN. = 100 FT.,
PRELIM. WORK 1 IN. = 100 FT., VERT. 1 IN. = 10 FT.,
CROSS SECTIONS HOR. 1 IN. = 5 FT., VERT. 1 IN. = 5 FT.)

COUNTY AND HIGHWAY	MILES AND SECTION	CLASS AND AGREEMENT		FEDERAL AGENCY OFFICE	SHEET NUMBER	TOTAL SHEETS
		STATE	FEDERAL			
34.6	850.0		134	WIS. 4	1	19

②
Western Ave
45



APPROVED FOR LANGLADE COUNTY
John Rusch
5/15/56
Date
COUNTY HIGHWAY COMM.
Title

CONVENTIONAL SIGNS

- CULVERTS IN PLACE.....
- CULVERTS REQUIRED.....
- DROP INLET.....
- POWER POLE.....
- TELEPHONE OR TELEGRAPH POLE.....
- RIGHT OF WAY MARKERS.....
- REFERENCE STAKE FOR HUBS ONLY.....
- MARSH.....
- HEDGE.....
- TREES.....
- GROUND ELEVATION.....
- GRADE ELEVATION.....



RECORD # 20491
LANGLADE COUNTY SURVEYORS OFFICE
DATE FILED 2/17/2020 BY D.T.

STATE HIGHWAY COMMISSION OF WISCONSIN
MADISON, WISCONSIN

SURVEYOR *C. H. ...* DISTRICT CHECKER *R. G. ...*

DATE *5-17-56* *J. J. ...*

APPROVED *E. L. ...*

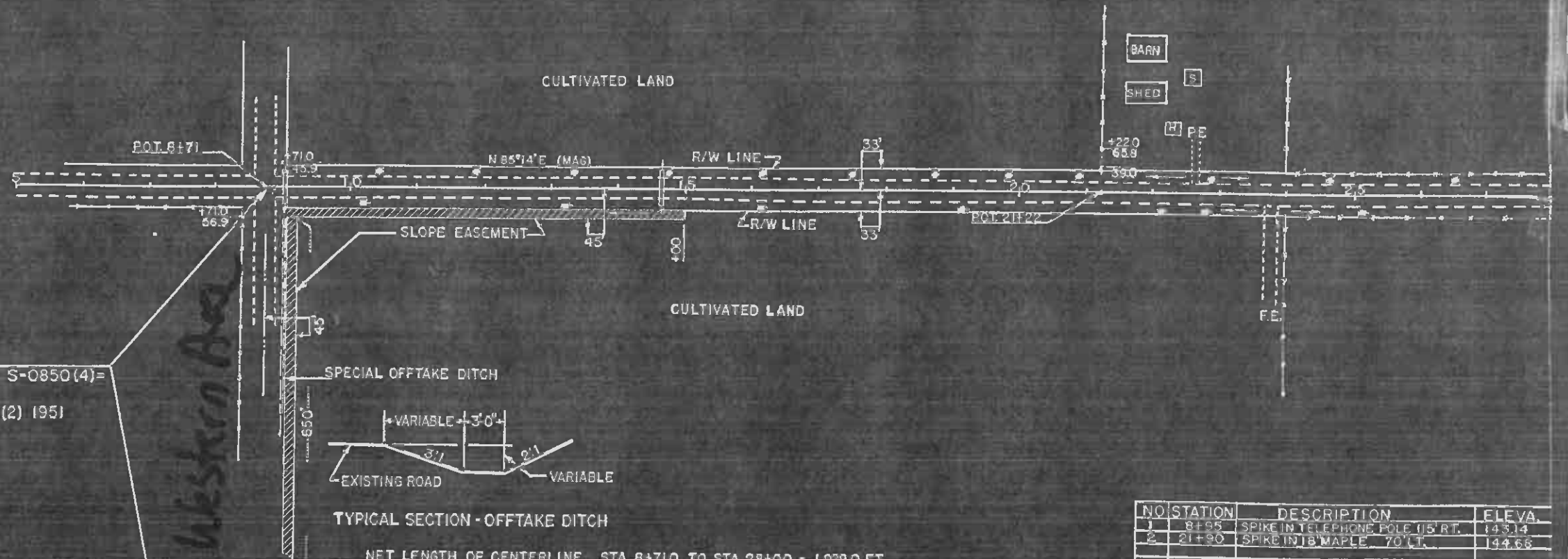
DEPARTMENT OF COMMERCE
BUREAU OF PUBLIC ROADS

DATE

DISTRICT ENGINEER

S 0850(4)

NOTE: REMOVE ALL EXISTING PIPE CULVERTS.



STA. 8+71.0
 BEGINNING OF PROJECT S-0850(4)=
 STA. 218+71.0
 END OF PROJECT S-0850(2) 1951

NO.	STATION	DESCRIPTION	ELEVA.
1	8+95	SPIKE IN TELEPHONE POLE 115' RT.	143.14
2	21+90	SPIKE IN B MAPLE 70' LT.	144.66

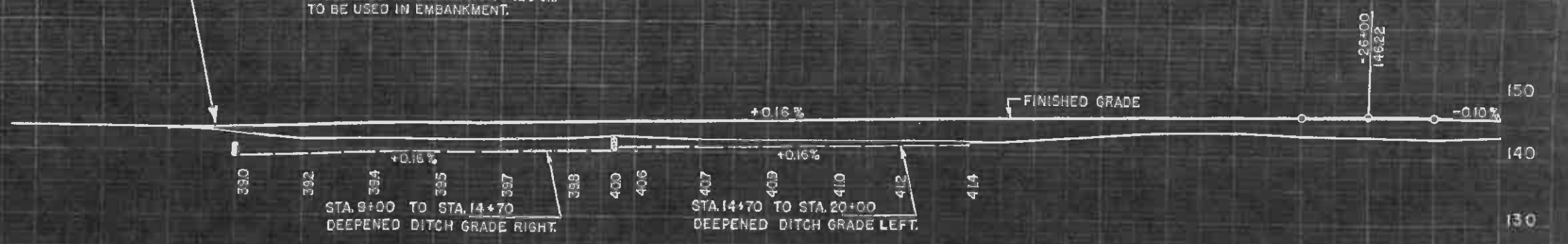
NET LENGTH OF CENTERLINE STA. 8+71.0 TO STA. 28+00 = 1,929.0 FT.

CUT 527 C.Y.
 FILL 2,762 C.Y.
 BORROW 2,920 C.Y.
 SHRINKAGE 40%
 FROM OFFTAKE DITCH 420 C.Y.

CUT 449 C.Y.
 FILL 3,563 C.Y.
 BORROW 4,539 C.Y.
 SHRINKAGE 40%



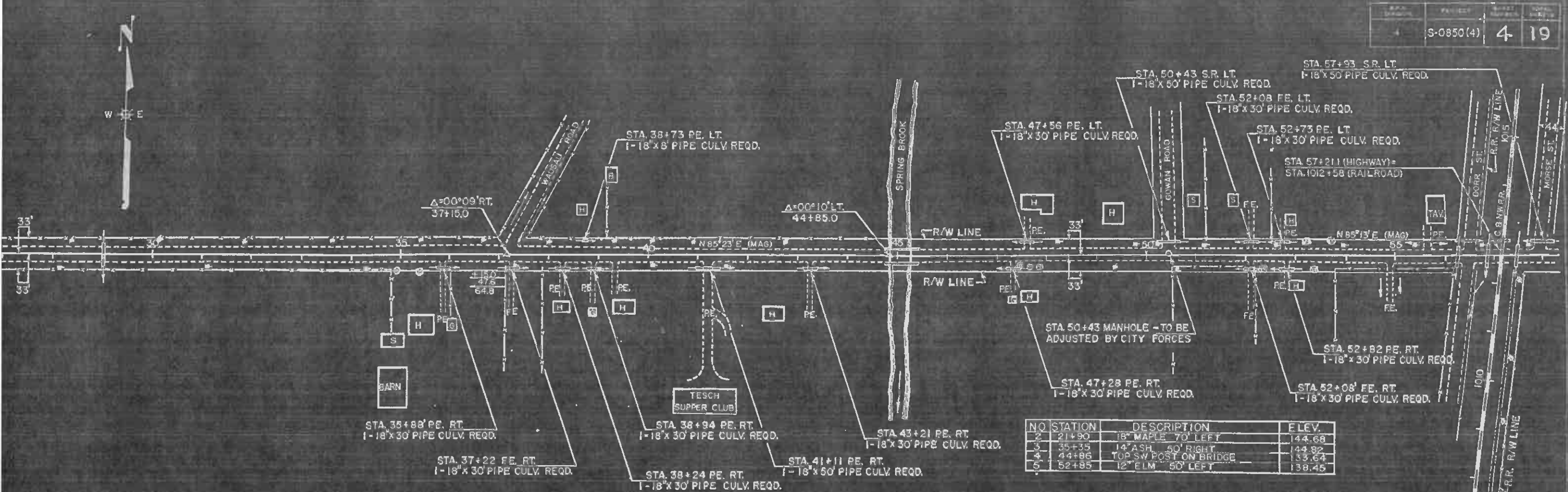
PROFILE OF OFFTAKE DITCH STA. 8+00 ON RIGHT
 SPECIAL DITCH EXCAVATION 420 C.Y.
 TO BE USED IN EMBANKMENT.



STA. 8+00
 1-24"x54" PIPE CULV. REQD.

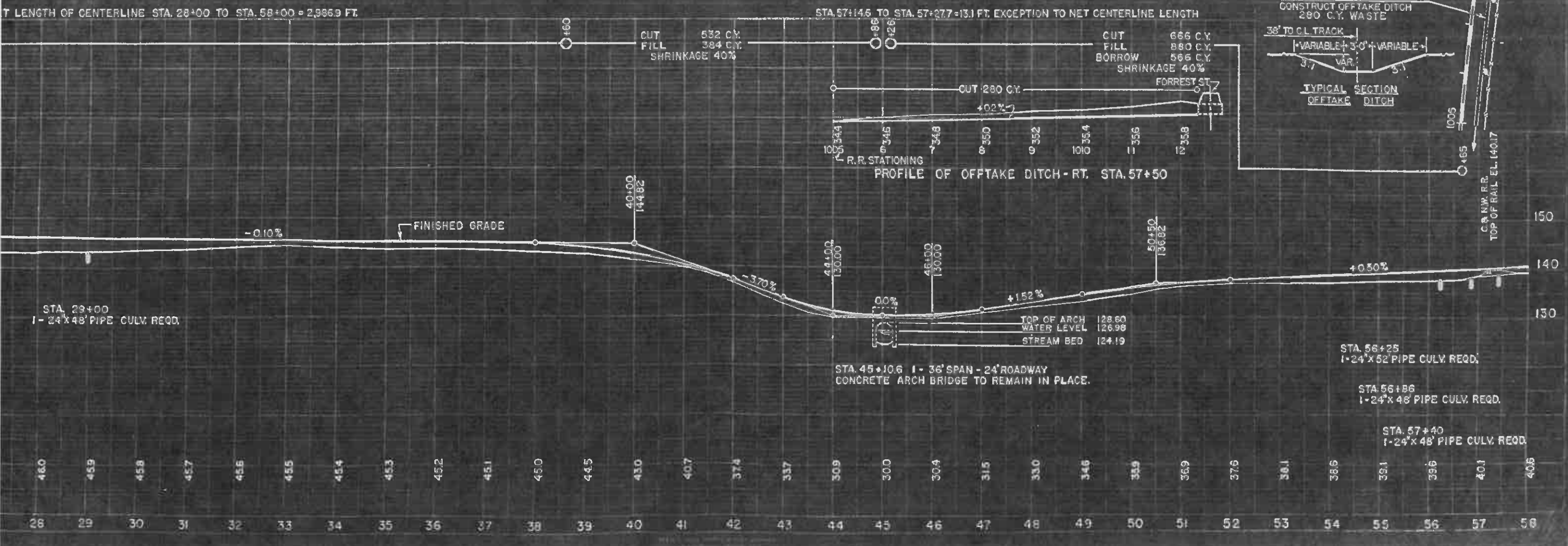
STA. 14+70
 1-24"x52" PIPE CULV. REQD.



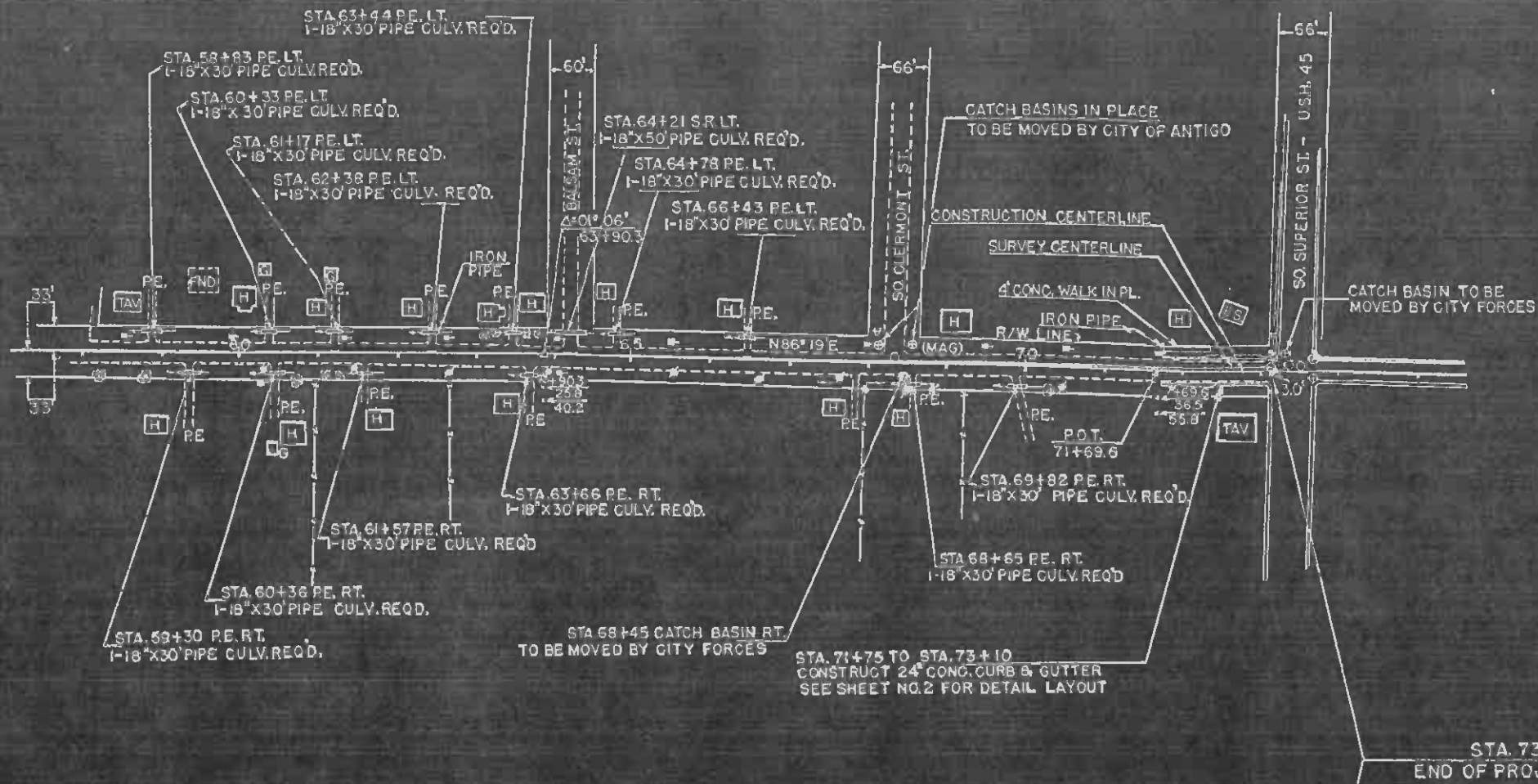


NO	STATION	DESCRIPTION	ELEV.
2	21+90	18" MAPLE 70' LEFT	144.68
3	35+35	14" ASH 50' RIGHT	144.82
4	44+86	TOP SW POST ON BRIDGE	139.64
5	52+85	12" ELM 50' LEFT	138.45

T LENGTH OF CENTERLINE STA. 28+00 TO STA. 58+00 = 2,986.9 FT.



28 29 30 31 32 33 34 35 36 37 38 39 40 41 42 43 44 45 46 47 48 49 50 51 52 53 54 55 56 57 58



BENCH MARKS

NO.	STA.	DESCRIPTION	ELEV.
5	52+85	12' ELM. 50' LEFT	138.45
6	58+50	SW COR. TOP STEP AT TAVERN	140.80
7	65+02	6" APPLE TREE, 35' LEFT	143.51
8	71+12	20" MAPLE, 50' RIGHT	145.98

NET CENTERLINE LENGTH - STA. 58+00 - STA. 73+10 = 1510.0 FT.

CUT 1,453 C.Y.
 FILL 1,033 C.Y.
 SHG. 40%

