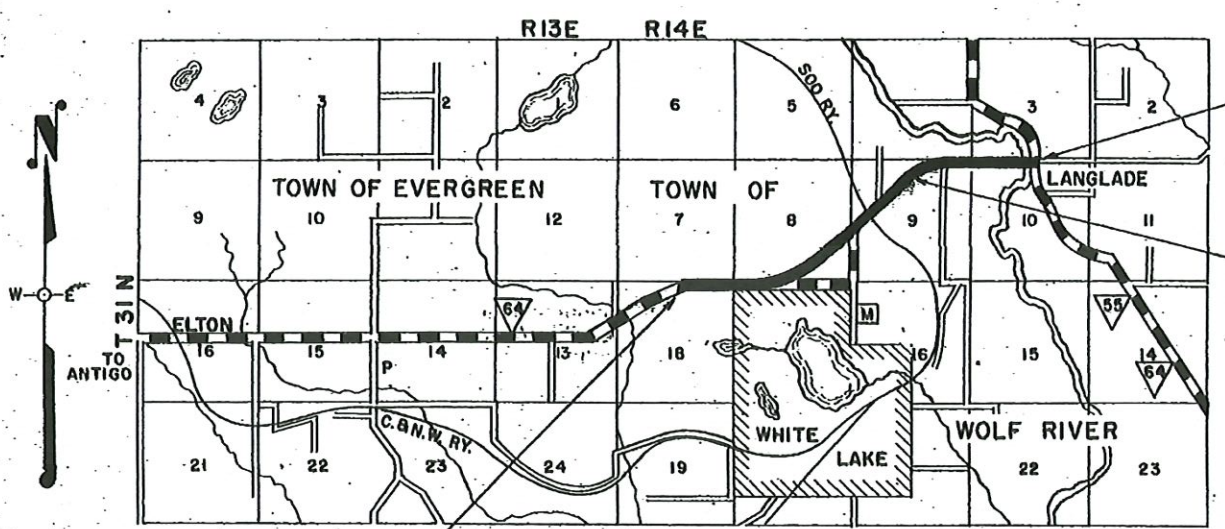


FED. ROAD DIST. NO.	STATE	PROJ. NO.	SHEET NO.	TOTAL SHEETS
4	WIB.	TO19(3)	4	52

DIVISION JOB NO. 7200

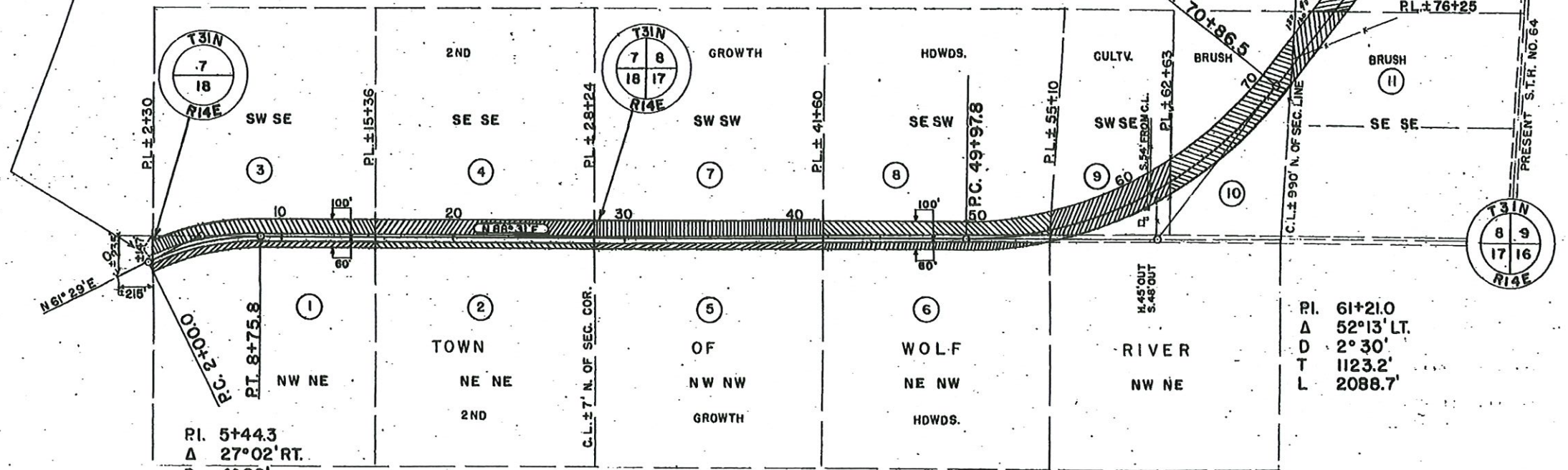


LOCATION SKETCH
SCALE
1/2 MILE

STA. 196+83 END OF RELOC. ORDER
DIV. JOB NO. 7200

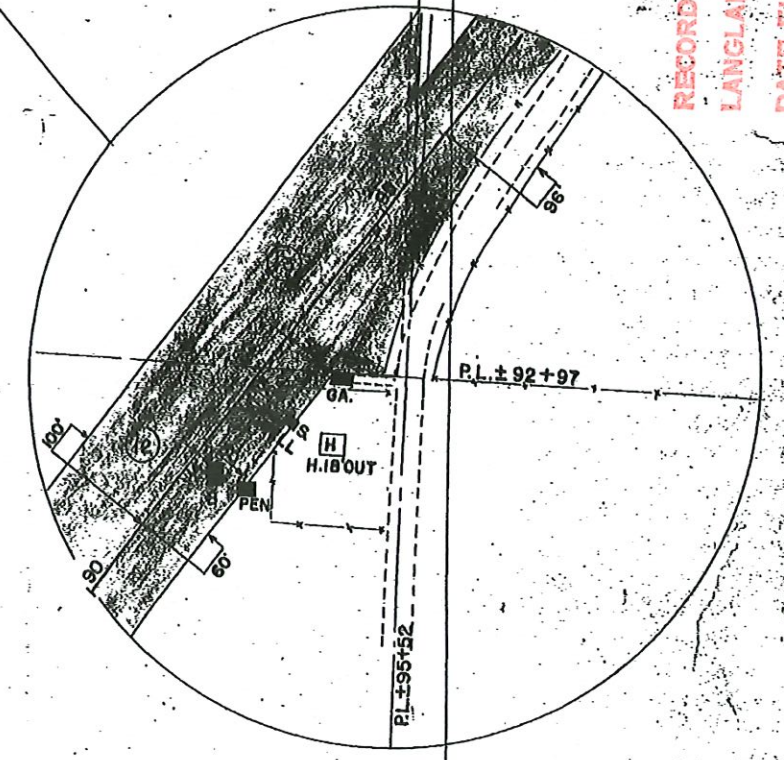
EQUATION STA. 138+139 BACK
EQUALS STA. 148+00 AHEAD

STA. 2+30 BEG. OF RELOC. ORDER
DIV. JOB NO. 7200 EQUALS STA. 149+67
END OF RELOC. ORDER DIV. JOB NO. 7982 SEC. 2



PI. 5+44.3
Δ 27°02' RT.
D 4°00'
T 344.3'
L 675.8'

PI. 61+21.0
Δ 52°13' LT.
D 2°30'
T 1123.2'
L 2088.7'



REVISED JULY 13, 1946
DATED MARCH 1, 1946.

PLAT OF RIGHT OF WAY REQUIRED
DIVISION JOB NO. 7200
ELTON - LANGLADE ROAD
ST.H.NO. 64
LANGLADE COUNTY

NOTE BOOK 8086,8154
DRAWN C.J.D.
CHECKED C.J.W.



RECORD # 20587
 LANGLADE COUNTY SURVEYORS OFFICE
 DATE FILED 5/8/24 BY DJT