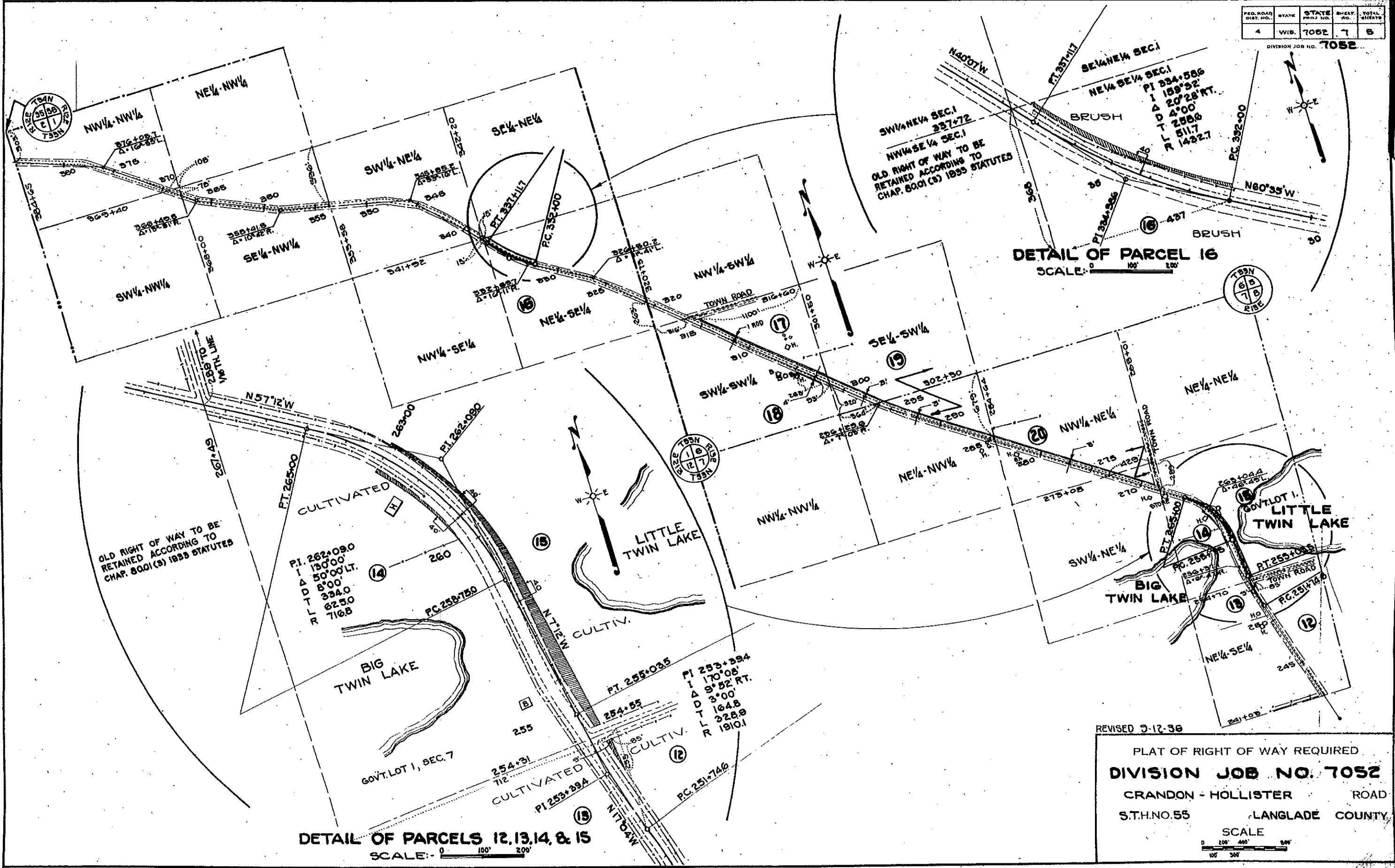


FED. ROAD DIST. NO.	STATE	STATE PROJ. NO.	SHEET NO.	TOTAL SHEETS
4	WIS.	7052	7	8

DIVISION JOB NO. 7052



REVISED 3-12-36

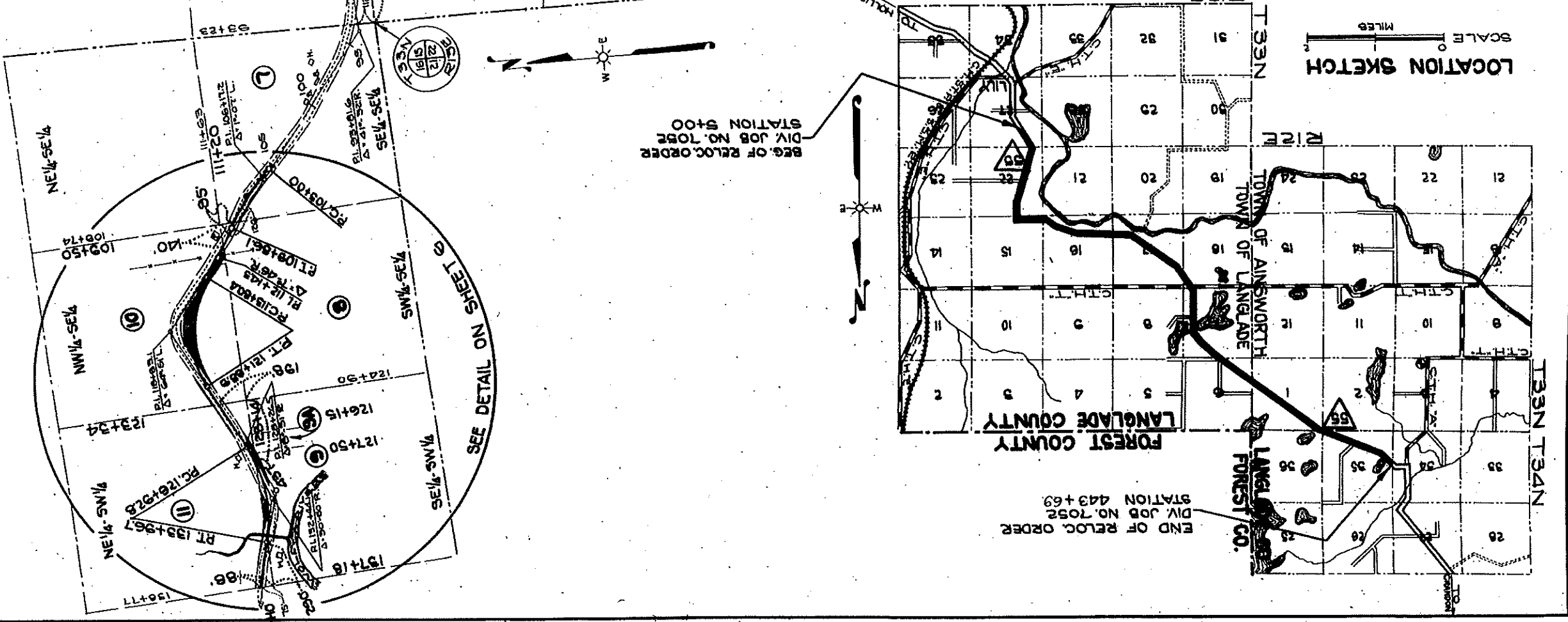
PLAT OF RIGHT OF WAY REQUIRED
DIVISION JOB NO. 7052
 CRANDON - HOLLISTER ROAD
 S.T.H. NO. 55 LANGLADÉ COUNTY

SCALE
 0 200' 400' 800'
 1" = 200'

DJ 7052

4	WISC.	7052	4	5
DESIGN NO.	STATE	PROJ. NO.	SHEET NO.	TOTAL SHEETS

DIVISION JOB NO. 7052



END OF RELOC. ORDER
DIV. JOB NO. 7052
STATION 443+69

FOREST COUNTY
LANGLADE COUNTY

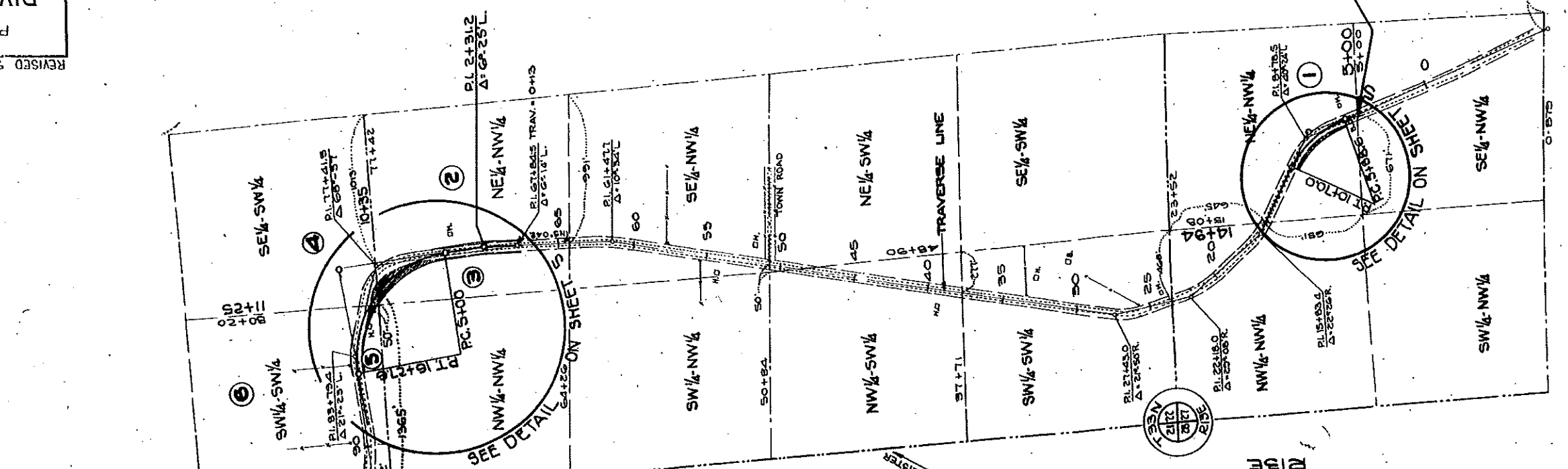
LANGFORD CO.

BEG. OF RELOC. ORDER
DIV. JOB NO. 7052
STATION 5+00

PLAT OF RIGHT OF WAY REQUIRED
DIVISION JOB NO. 7052
CRANDON - HOLLISTER ROAD
ST. H. NO. 55
LANGLADE COUNTY

SCALE
0 100 200 300
FEET

REVISED 9-12-36



BEG. OF RELOC. ORDER
DIV. JOB NO. 7052
STATION 2+00

DS 7050