

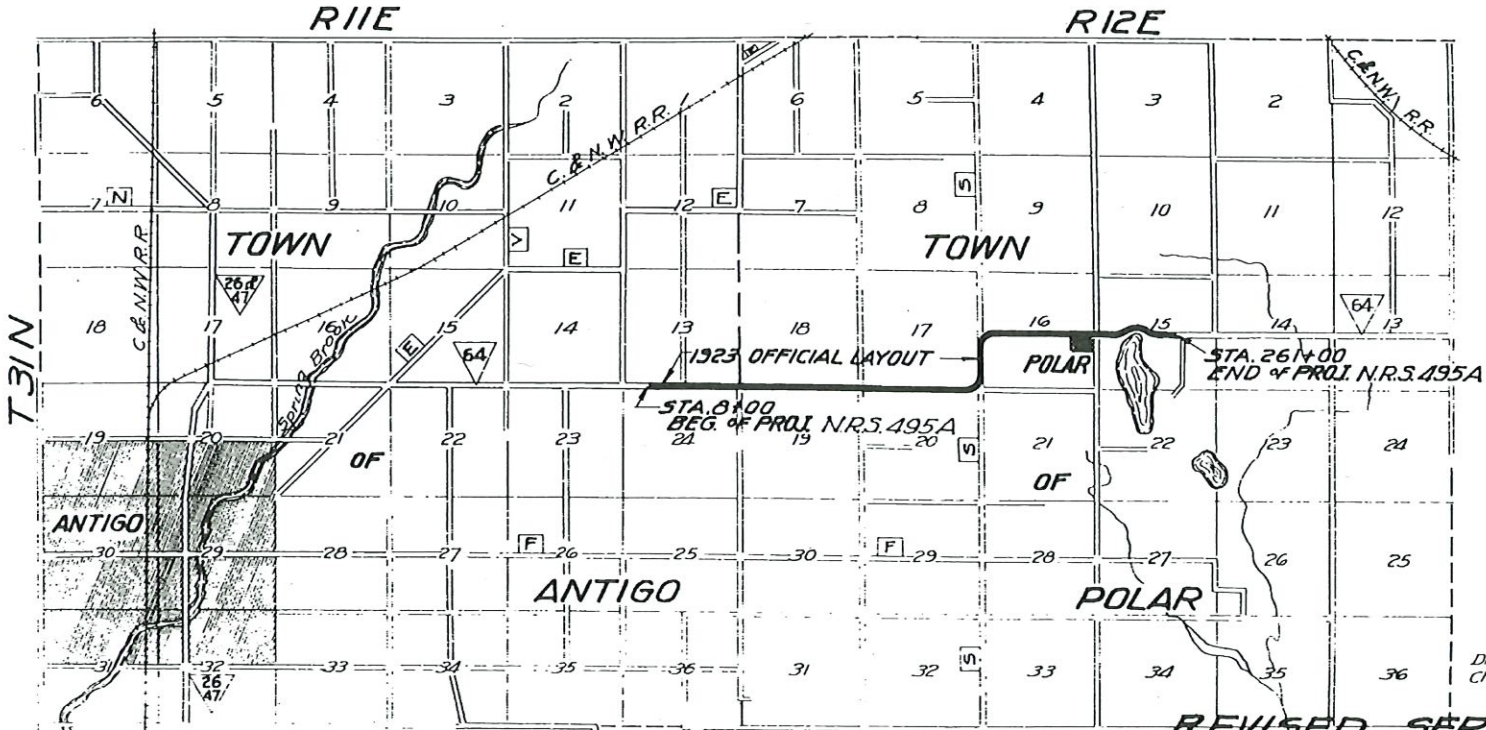
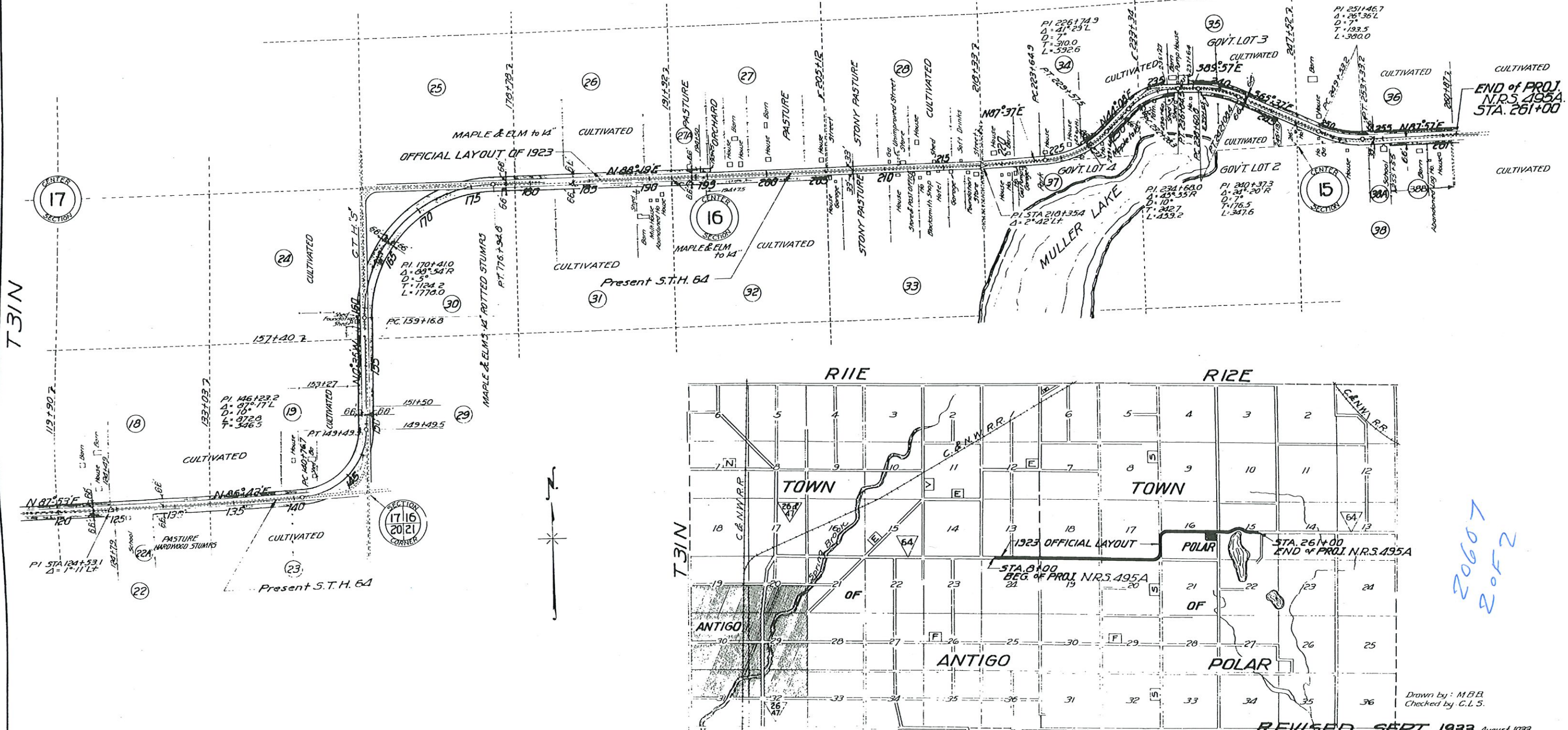
NO.	OWNER	ADDRESS	ACRES	DESCRIPTION	MORTGAGEE	ADDRESS	REMARKS	CLASSIFICATION OF LAND
1	PETER SCHRAMKE	RT.#4. ANTIGO	0.81	SE 1/4 SW 1/4 SEC. 13 T31N R11E	FIRST LOAN & TRUST CO.	MILWAUKEE, WIS.		
2	LANGLADE COUNTY	RT.#4. ANTIGO		PART OF SE 1/4 SW 1/4 SEC. 13			GRAVEL PIT	0.34 0.47
3	WALTER RAYMARK	RT.#4. ANTIGO	1.00	SW 1/4 SE 1/4 SEC. 13	J.H. SCHROEDER	OSHKOSH, WIS.		0.49 0.51
4	RAY RAYMARK	"	1.00	SE 1/4 SE 1/4	"	"		1.00
5	MARY SELENSKE	"	1.00	NE 1/4 NW 1/4 SEC. 21	T.W. LESLIE	ANTIGO, WIS.		0.50 0.50
6	LESTER NASH	ANTIGO, WIS.	1.00	NW 1/4 NE 1/4	"	"		0.50 0.50
7	"	"	1.00	NE 1/4 NE 1/4	"	"		1.00 1.00
8	W. HELMBRECHT	RT.#4. ANTIGO	1.00	SW 1/4 SW 1/4 SEC. 13 T31N R12E	S. BULLMAN-LAND CONTRACT	ANTIGO, WIS.		0.55 0.45
9	A. WILDMAN	"	1.00	SE 1/4 SW 1/4	"	"		0.55 0.45
10	ROY SPORLEDER	"	1.00	SW 1/4 SE 1/4	S. LESLIE-LAND CONTRACT	ANTIGO, WIS.		0.54 0.46
11	HENRY DEUSCHER	"	1.00	SE 1/4 SE 1/4	T.W. LESLIE	"		0.48 0.52
12	RUDOLPH SCHMIDT	"	1.00	NW 1/4 NW 1/4 SEC. 19	JESS McDONALD	"		0.48 0.52
13	H.B. KELLOGG	ANTIGO, WIS.	0.74	NE 1/4 NW 1/4	"	"		0.30 0.34
13A	RUDOLPH SCHMIDT	RT.#4 ANTIGO	0.26	1/4 A. in NE COR. NE 1/4 NW 1/4 SEC. 19	"	"		0.26 0.26
14	ED. ENSLE	"	1.00	NW 1/4 NE 1/4 SEC. 19 T31N R12E	OLD LINE LIFE INS. CO.	MILWAUKEE, WIS.		1.00 0.89
15	RUDOLPH SCHMIDT	"	1.00	NE 1/4 NE 1/4 SEC. 19	AMANDA HOWEN	RT.#5 ANTIGO		1.00 0.17
16	MRS. OTTO TEWS	"	1.00	SW 1/4 SW 1/4 SEC. 17	MARY HOFFMAN	"		1.00 1.00
17	WM. WAGNER	"	1.00	SE 1/4 SW 1/4	"	"		1.00 1.00
18	HENRY DEUSCHER	"	1.00	SW 1/4 SE 1/4	T.W. LESLIE	ANTIGO, WIS.		1.00 1.00
19	HENRY BRANDT	"	2.65	SE 1/4 SE 1/4	LOUIS WINTER	"		2.65 2.65
20	HENRY DEUSCHER	"	1.00	NW 1/4 NW 1/4 SEC. 20	T.W. LESLIE	"		1.00 1.00
21	HERMAN FISCHER	"	0.87	NE 1/4 NW 1/4	W.G. PETTERS	"		0.87 0.87
22	ERNEST FISCHER	"	0.90	NW 1/4 NE 1/4 " EXC. PARCEL 22A	"	"		0.90 0.90
22A	HIGHLAND SCHOOL DISTRICT	"		2A in NW 1/4 NE 1/4 SEC. 20 T31N R12E	"	"		0.38 0.52
23	ERNEST FISCHER	RT.#4 ANTIGO	0.88	NE 1/4 NE 1/4 SEC. 20	"	"		0.66 0.38
24	HENRY BRANDT	"	0.38	NE 1/4 SE 1/4 SEC. 17	CHAS. SCHOTTE	RT.#5 ANTIGO		0.38 0.38
25	GEORGE R. LADE	"	0.95	SW 1/4 NW 1/4 SEC. 16	"	"		0.95 0.95
26	"	"	1.00	SE 1/4 NW 1/4	"	"		0.52 0.48
27	T.D. KELLOGG CO.	ANTIGO, WIS.	0.02	SW 1/4 NE 1/4	"	"	PLATTED	0.52 0.02
28	"	"		SE 1/4 NE 1/4	"	"	"	
29	HENRY F. LADE	RT.#4 ANTIGO	0.73	SW 1/4 SW 1/4	"	"	"	0.73 0.73
30	MRS. BARBARA LADE	"	4.21	NW 1/4 SW 1/4	"	"	AREA IN CORNER	4.21 4.21
31	"	"	1.00	NE 1/4 SW 1/4	"	"	"	0.76 0.24
32	FRANK FISCHER	"	1.00	NW 1/4 SE 1/4	PALMER INS. AGENCY	ANTIGO, WIS.	PLATTED	0.53 0.47
33	VILLAGE OF POLAR	"		NE 1/4 SE 1/4	"	"	"	
34	FRANK WALTER	RT.#4 ANTIGO	0.77	SW 1/4 NW 1/4 SEC. 15	CHAS. WENZEL	RT.#2 ANTIGO	PLATTED	0.77 0.77
35	"	"	1.62	GOV'T LOT #3 SEC. 15	"	"	"	1.62 1.62
36	MRS. JOHN HOSE	"	1.16	SW 1/4 NE 1/4 SEC. 15	JAMES SCHRAML	"	"	1.16 1.16
37	JOHN HARTMAN	"		GOV'T LOT #1 SEC. 15	OSCAR KRAUSE	CATAWBA, WIS.	"	
38A	" & WIFE	"	0.41	NW 1/4 SE 1/4 SEC. 15 EXC. PARCEL 38A	"	"	"	
38A	WALTER STUMPGES	"		2A in NW 1/4 SE 1/4 SEC. 15 T31N R12E	"	"	"	
21A	WALTER WAGNER	"	0.13	PARCEL IN NE COR. OF NE 1/4 NW 1/4 SEC. 20 T31N R12E	"	"	(CULTIVATED LAND)	
21A	W. WAGNER & WIFE CLARA	RT.#4 ANTIGO	0.25	PARCEL IN SW COR. OF SW 1/4 NE 1/4 SEC. 16 T31N R12E	"	"	(PASTURE LAND)	
		TOTAL	35.92				TOTALS	19.46 11.24 5.22

RECORD # 20607
 LANGLADE COUNTY SURVEYORS OFFICE
 DATE FILED: 8/14/24 BY: D.T.
 1 OF 2

Drawn by: M.B.B.
 Checked: G.L.S.
 REVISED SEPT. 1933 August 1933

PLAT OF RIGHT OF WAY REQUIRED
N.R.S. PROJECT 495A
 ANTIGO-ELTON ROAD
 S.T.H. NO. 64 LANGLADE COUNTY
 SCALE
 400 FT.

RIZE TOWN OF POLAR



20607
2052

Drawn by: M.B.B.
Checked by: C.L.S.

REVISED SEPT., 1933 August 1933

LOCATION SKETCH

PLAT OF RIGHT OF WAY REQUIRED
N.R.S. PROJECT 485A
 ANTIGO - ELTON ROAD
 S.T.H. NO. 64 LANGLADE COUNTY
 SCALE
 = 400 FT.