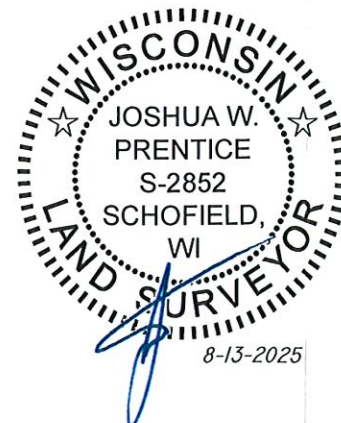
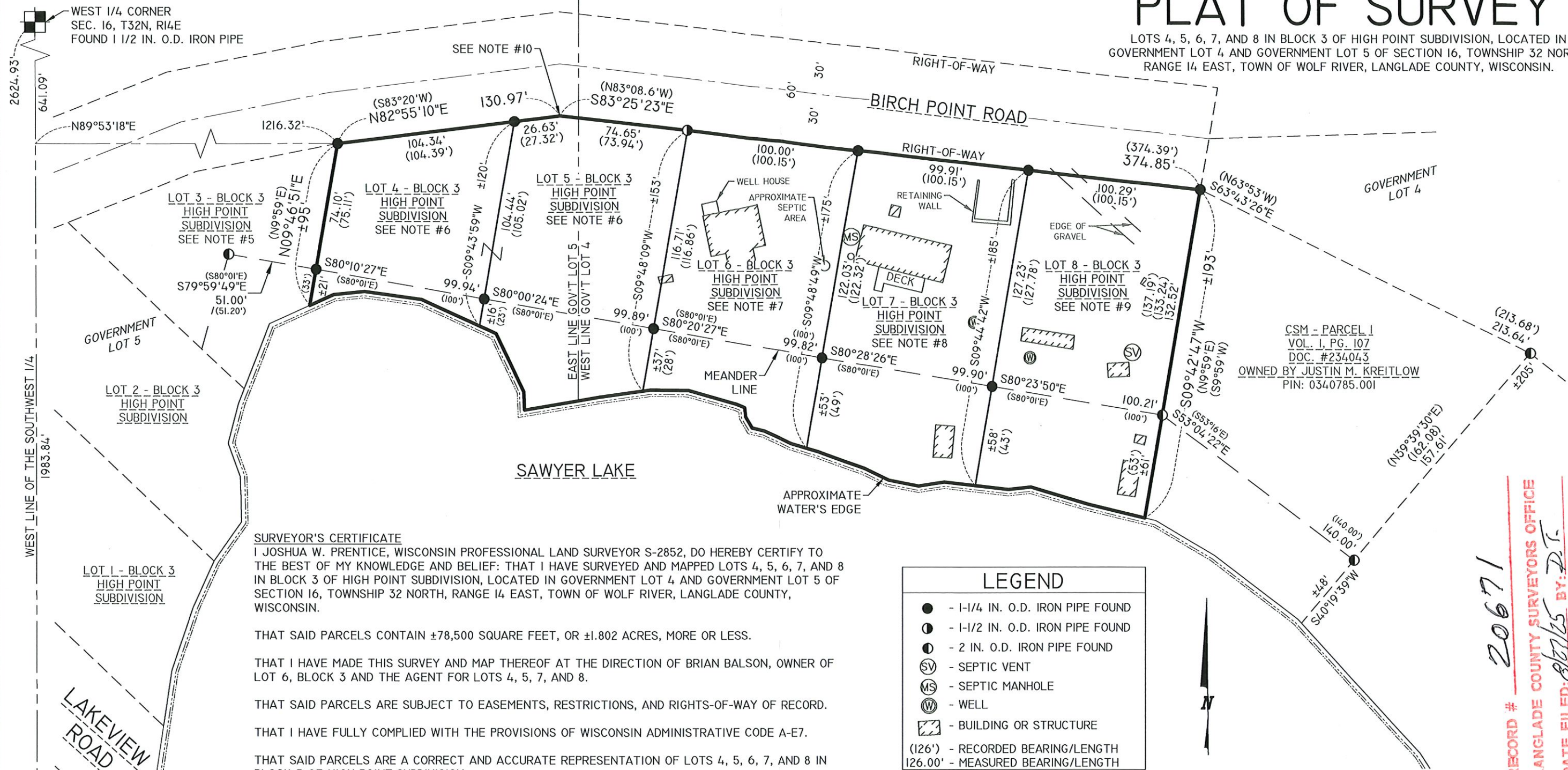


# PLAT OF SURVEY

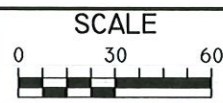
LOTS 4, 5, 6, 7, AND 8 IN BLOCK 3 OF HIGH POINT SUBDIVISION, LOCATED IN GOVERNMENT LOT 4 AND GOVERNMENT LOT 5 OF SECTION 16, TOWNSHIP 32 NORTH, RANGE 14 EAST, TOWN OF WOLF RIVER, LANGLADE COUNTY, WISCONSIN.



REI Engineering, INC.  
4080 N. 20TH AVENUE  
WAUSAU, WISCONSIN 54401  
PHONE: 715.675.9784 FAX: 715.675.4060  
EMAIL: MAIL@REIENGINEERING.COM



**REI** CIVIL & ENVIRONMENTAL  
ENGINEERING, SURVEYING



DATE	REVISION	BY	CHK'D

DESIGNED BY:	CHECKED BY:
DESIGNED BY:	JLR
SURVEYED BY:	APPROVED BY:
SURVEYED BY:	JWP
DRAWN BY:	DATE:
DRAWN BY:	8-13-2025

PLAT OF SURVEY	REI No.
LOTS 4, 5, 6, 7, AND 8 BLOCK 3	12160
BIRCH POINT ROAD	
WHITE LAKE, WISCONSIN 54491	
	SHEET 1 OF 1

RECORD #	DATE FILED	BY
20671	8/13/25	P.T.
LANGLADE COUNTY SURVEYORS OFFICE		