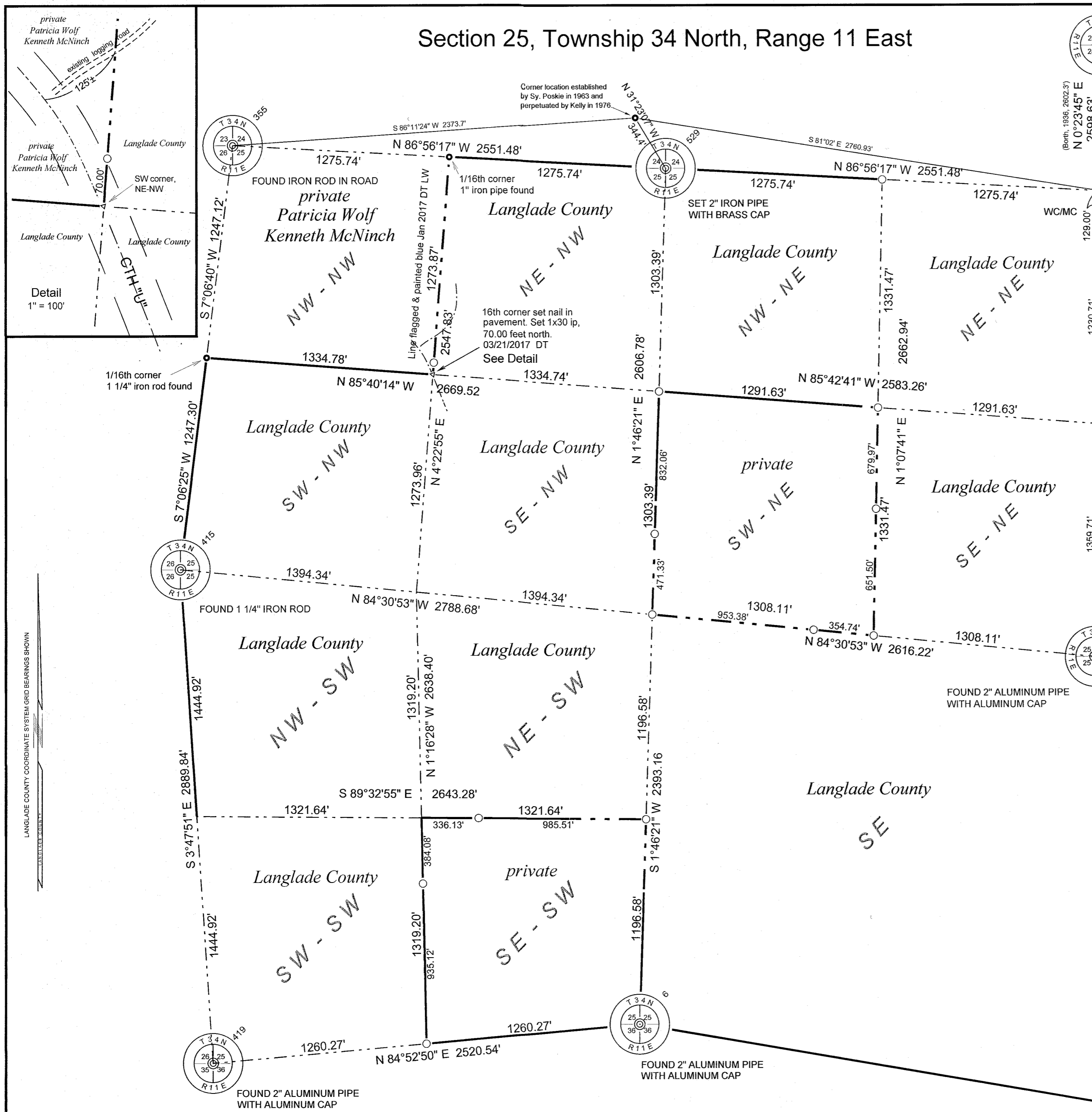


Section 25, Township 34 North, Range 11 East



NOTE for this section corner and WC.
 The original government survey, at 78.50 chains, "set a Witness cor for corn of Sections 24, 25, 19 & 30" and marked two white pine bearing trees: 15", N78E, 282 links and a 18", S58E, 220 links (145.2 feet) for the WC. In 1935, Chas. W. Borth found "an old scribed pine stake about rotten. He set and scribed new tam stake". He found both original pines, the SE being a rampike with face, the NE being rotten stump. He marked a new birch, 6", S45 E, 11 feet. I reset the witness corner location from Borths white birch stump. From the original witness corner location, I find the original pine SE to bear S 57°12' E, at 146.4 feet. Because this witness corner location (99 feet from the section corner) falls in a low area (backwaters area) of the Wolf River, it was not monumented, but from that point I offset 30.00 feet south, down the section line, to set a new witness corner/meander corner monument on high, stable ground.

NOTE for the North Quarter corner of Section 25.
 In 1963, Sy Poskie surveyed the Boy Scout land to the north in Section 24. At the West 1/16th corner to Sec. 24 & 25, he calls for an "I.P. at corner of fences." It appears that he projected a line from the SW corner of Sec. 24, easterly through what he said was the 1/16th corner and at a 2x projection of that bearing and distance, he set the quarter corner. His resulting position is not supported by any records and he made no mention of any recovered physical evidence. His position creates a 13° deflection in the section line at that location and makes the section line distances each way different by 387 feet. I consider the Poskie location as being created by an improper procedure with no supporting evidence. After a thorough search for remaining original evidence, I consider the corner 'lost' and reset it by single proportionate measurement between adjoining section corners.

NOTE for the South Quarter corner of Section 25.
 In 1909, surveyor Vaughn surveyed a road starting at the NW corner of Section 25 and ending at the E 1/4 corner of Section 36. In computing his road traverse, I find that his survey data closes very well at the East 1/4 corner of Section 36. In doing the survey, he says: "crossed South line of Sec 25... 8.58 (ch) (566.3 feet) w of 1/4P". In 1984, former surveyor Kelly found a "4 x 4 wood post, broken, point still in place". He replaced the post with an aluminum capped monument. I find Kellys monument to be approx. 560 feet east of the centerline of CTH "U"; very much in agreement with the 566.3 feet mentioned by Vaughn. I accept the location of the wood post found and perpetuated by Kelly as a perpetuation of the corner mentioned by Vaughn in 1909.

LEGEND
 ○ 1" x 30" iron pipe set flush and marked with steel channel post with Forest Boundary sign
 — County Forest Boundary
 - - - County Forest Boundary surveyed and marked

LANGLADE COUNTY COORDINATE SYSTEM NAD83(91)

PNO	N	E	DESC
3	435007.29	646803.18	E1/4x s25 2" alum mon fnd
6	432865.36	644124.93	S1/4x s25 2" alum mon fnd
355	437999.18	641731.75	REBAR SW x S24
400	440325.17	646845.36	e1/4x s24 bc in conc
415	435523.94	641423.05	W1/4x s251.25" ir fnd
418	436761.65	641577.37	1/16thx IRON PIPE FND
419	432640.44	641614.44	SWx S25 Alum mon fnd
529	437862.89	644279.58	1/4x spm 2" ip w/bc set
530	435257.37	644198.95	ctr sec 1" ip set
901	437726.61	646827.41	sec cor in river
1213	437597.61	646826.26	WC 1" ip set

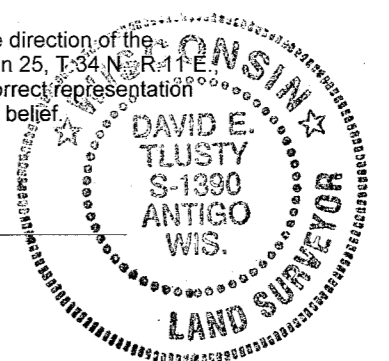
The coordinates on the NW corner, W1/4 corner, SW corner and the NE WC/MC were determined by direct, single base RTK GPS positioning with base set at county control point POST LAKE GPS, using published NAD83(91) values for control. The coordinates for the other PLSS corners shown were determined by conventional traverse with a robotic total station from RTK control pairs in the vicinity of the corners. Coordinates shown hereon are Langlade County Coordinates NAD83(91) datum.

I, David E. Tlusty, Langlade County Surveyor, do hereby certify that, by the direction of the Langlade County Forestry Department, I have made a survey of part of Section 25, Township 34 North, Range 11 East, as shown hereon. I further certify that this map is a true and correct representation of said survey, and that this survey is correct to the best of my knowledge and belief. Corner restoration forms are on file for all monumented corners shown.

April, 2012
 David E. Tlusty, S-1390
 Langlade County Surveyor

Revised 03/21/17 to show NW 16th corner set
 REVISION OF MAP 30590

RECORD # 30005
 LANGLADE COUNTY SURVEYORS OFFICE
 DATE FILED: 4/3/17 BY: D. Tlusty



NO.	DATE	DESCRIPTION	BY	REVISIONS

THIS DOCUMENT WAS CREATED ON LANGLADE COUNTY COMPUTER EQUIPMENT THAT WAS PURCHASED WITH THE ASSISTANCE OF A GRANT RECEIVED FROM THE WISCONSIN LAND INFORMATION BOARD.

LANGLADE COUNTY
 LAND RECORDS & REGULATIONS DEPARTMENT

SCALE: 1" = 500'
DRAWN BY: D. TLUSTY
REF. FILE:
DATE: April 2012
TOWN OF: ELCHO
TOWN CODE:
LOCATION:
SECTION: 25
TOWNSHIP: 34
RANGE: 11
DWG. #: ..253411