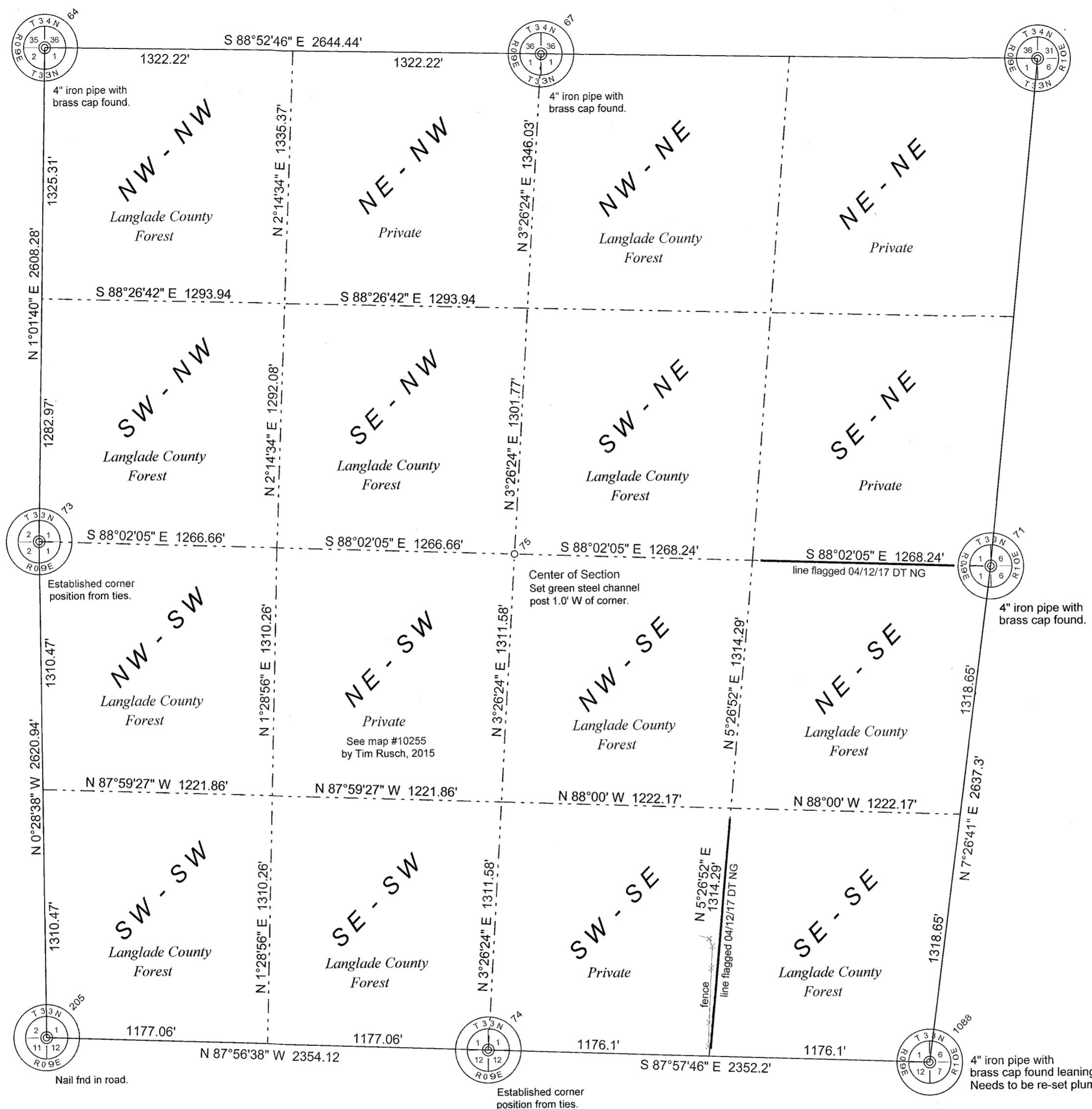


Section 1, Township 33 North, Range 9 East

LANGLADE COUNTY COORDINATE SYSTEM GRID BEARINGS SHOWN



SURVEY COMMENTS

The coordinate values of the four corners were obtained by direct RTK GPS, multiple observations. The coordinates on the NW corner were previously obtained by short traverse data from nearby RTK control points. The coordinates on the SW corner were obtained by static GPS session on the existing nail found in the road. The center of section was set using RTK GPS equipment.

Coordinates shown are Langlade County Coordinates, NAD(83)91 datum. Bearings shown are Langlade County Coordinate System grid bearings. Add (clockwise) 2° to the bearings shown to get approximate magnetic bearings.

| # | N | E | Description |
|------|-----------|-----------|----------------------------|
| 64 | 427828.75 | 577274.47 | sec cor mon fnd rtk& trav |
| 67 | 427777.03 | 579918.40 | IP BC FND: good cond |
| 71 | 425047.01 | 582294.52 | rtk IP BC FND fb24-12 |
| 73 | 425220.88 | 577227.69 | W1/4X S1 STONE FND fb24-12 |
| 74 | 422515.58 | 579602.13 | CALC 1/4X FROM WM |
| 75 | 425134.00 | 579759.53 | C1/4 rebar set |
| 205 | 422600.03 | 577249.52 | static NE cor S11 na fnd |
| 1088 | 422432.0± | 581952.8± | 4\"/> |

I, David E. Tlusty, Langlade County Surveyor, do hereby certify that by the direction of Steve Jackson, Langlade County Forest Administrator, I have made a survey of part of Section 1, T.33 N., R.9 E., Town of Summit, as shown hereon. I further certify that this map is a true and correct representation of said survey, and that this survey is correct to the best of my knowledge and belief.

February 14, 2012
 David E. Tlusty, S-1390
 Langlade County Surveyor



DT Revised 04/9/2017 to show work in SE quarter

RECORD # 30066
 LANGLADE COUNTY SURVEYORS OFFICE
 DATE FILED: 5/10/17 BY: D. Tlusty

THIS DOCUMENT WAS CREATED ON LANGLADE COUNTY COMPUTER EQUIPMENT THAT WAS PURCHASED WITH THE ASSISTANCE OF A GRANT RECEIVED FROM THE WISCONSIN LAND INFORMATION BOARD.

LANGLADE COUNTY
 LAND RECORDS & REGULATIONS DEPARTMENT

SCALE: 1" = 500'

DRAWN BY: D. TLUSTY

PacSoft prj: SUMMIT
 Fb 24-12

DATE: 02/14/2012

TOWN OF: SUMMIT

TOWN CODE: 028

LOCATION:

SECTION: 1
 TOWNSHIP: 33
 RANGE: 9

DWG. #: ..013309

| NO. | DATE | DESCRIPTION | BY |
|-----|------|-------------|----|
| 1 | | | |

REVISIONS

- 3/4" x 30" rebar set
- 3/4" rebar found
- boundary line marked as noted