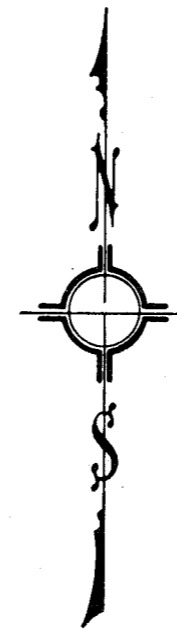
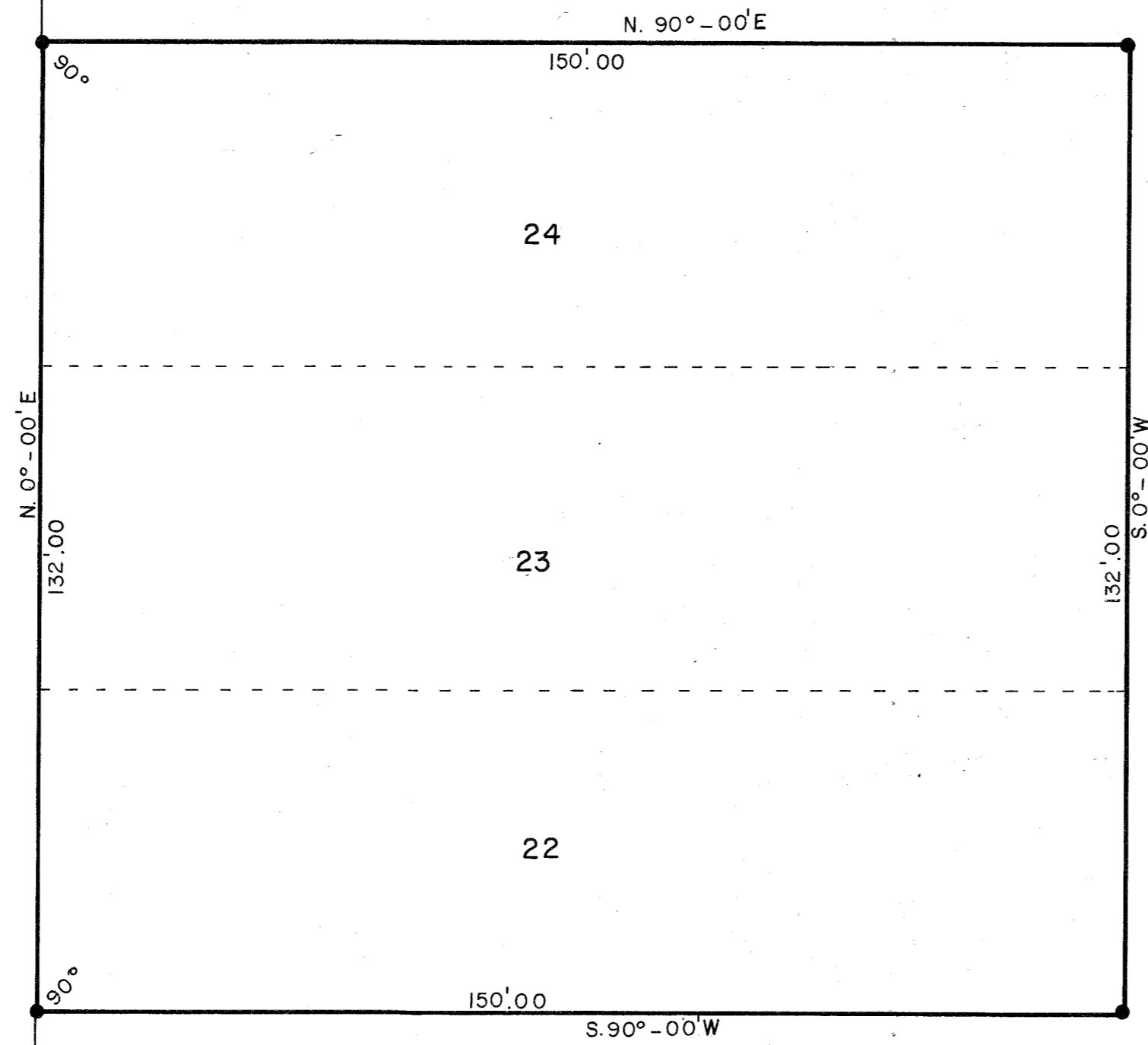


EDISON ST

66'

STRONG & STALEY'S ADD.

BLK. (1)



Description

Lots 22, 23 and 24, block 1 or Strong and Staley's Addition to the City of Antigo, Langlade County, Wisconsin.

Surveyed by: Gary A. Radtke, RLS 1248

Date: Oct. 23, 1975

*Gary A. Radtke*



RECORD # 30149  
LANGLADE COUNTY SURVEYORS OFFICE  
DATE FILED: 2/24/93 BY: D.T.

LANGLADE DEVELOPMENT			
SCALE: 1" = 20'	REVISIONS	BY	DATE
DATE: 10-22-75			
DR: JF	CKD:		
AP: VD:			
TITLE: JACK SMITH	NO. 295		