

DESCRIPTION

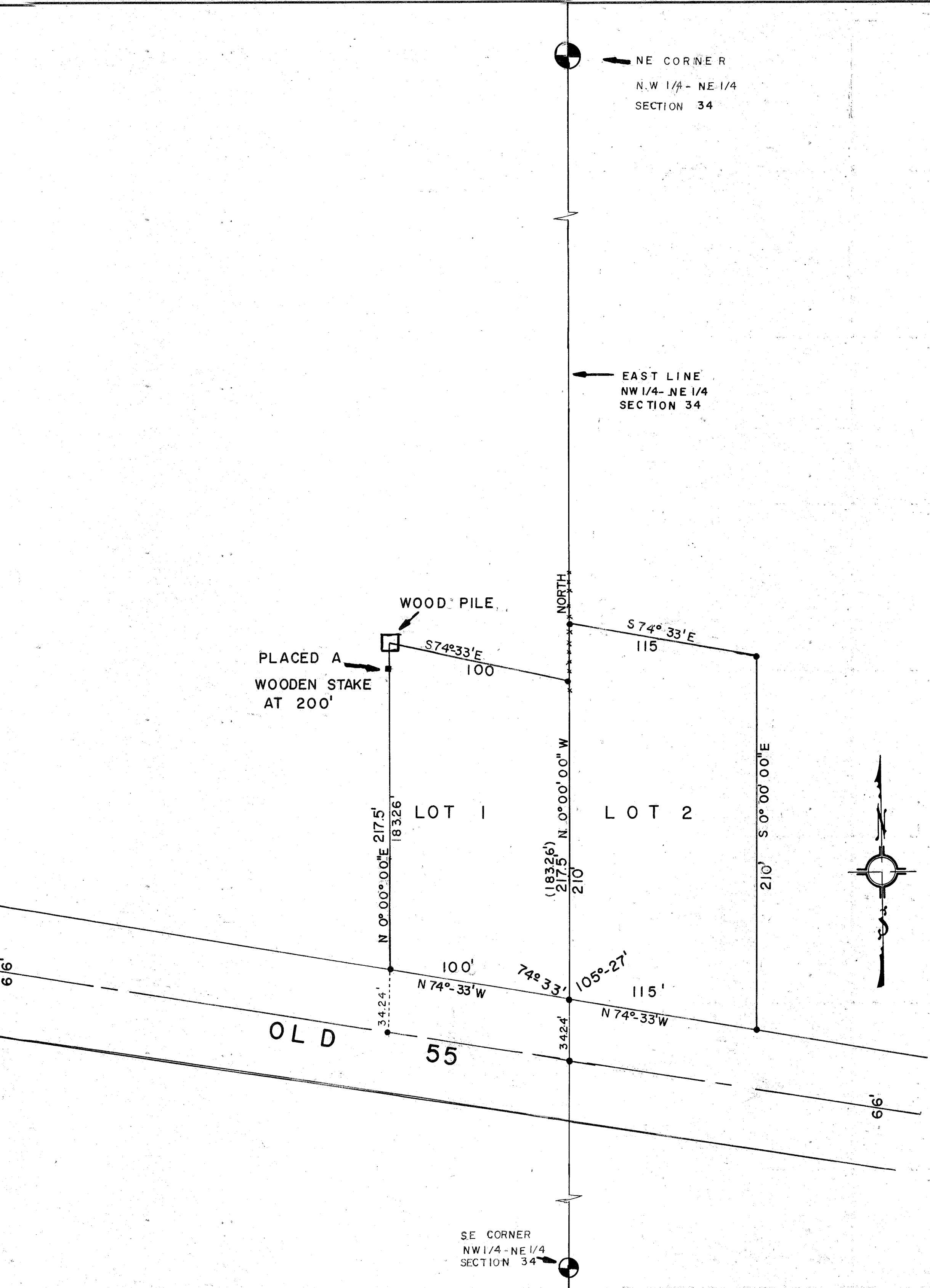
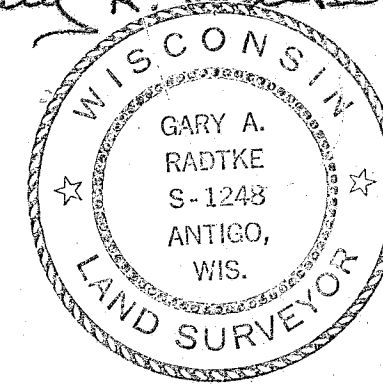
Lot 1 : Melvin Whisman
Lily, Wisconsin 54445

Pt NW NE Sec. 34, T33N, R13E: Com at a Pt in Ctr Hwy "55" Where SD Hwy Intersec
E Ln Sd NW NE: N on E Ln 210' $\frac{1}{2}$: E Along Hwy 100' to place Beginning:
V. 212-P. 39 DLC. .50 Acre.

Lot 2: George E. & Cecilia Keefe
Lily, Wisconsin 54445

Pt of NE NE Sec. 34, T33N, R13E: Beg at a Pt on W Ln at Intersec with N Ln
of Hwy 55, TH E along N Ln of Hwy 115' N 210', W 115' to W Ln: S on SD W Ln
210' to Place Beginning: V. 138-P. 228 DLC. 1 Acre.

Surveyed By: Gary A. Radtke, RLS S-1248
8/13/75



RECORD #: 30161
LANGLADE COUNTY SURVEYORS OFFICE
DATE FILED: 8/24/93 BY: D.T.

LANGLADE DEVELOPMENT			
SCALE: 1" = 40'	REVISIONS	BY	DATE
DATE: 8/13/75			
DR: KM	CKD:		
AP: VD:			
TITLE: WHISMAN - KEEFE			NO. 254