



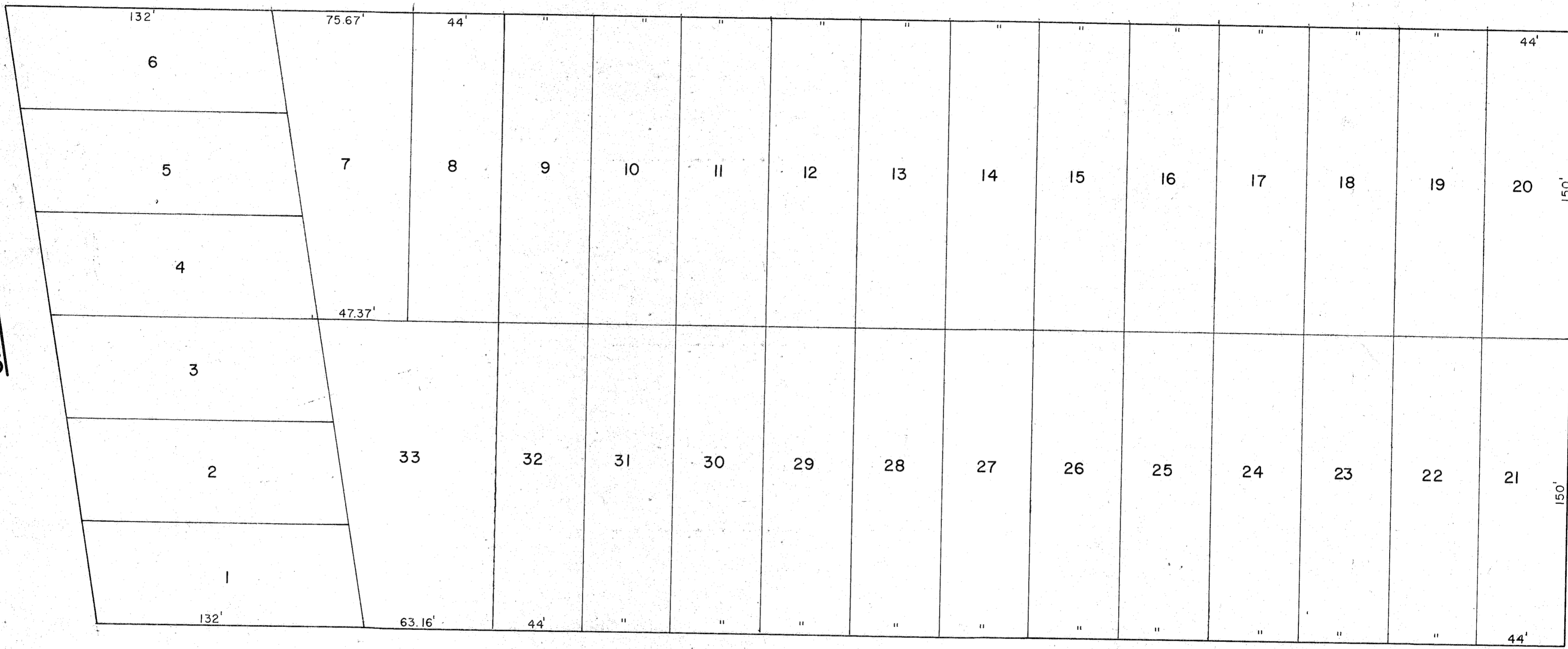
RD.

NEVA

U.S. "45"

60'

KELLY ST.



NORTH AVE.

66'

Block B MORSE & TRANDWELL'S ADD.

RECORD # 30187
30180
 LANGLADE COUNTY SURVEYORS OFFICE
 DATE FILED: 5/24/93 BY: D.T.

LANGLADE DEVELOPMENT			
SCALE	1" = 40'	REVISIONS	BY DATE
DATE	7-2-75		
DR'N	P.V.	CKD.	
AP'VD.			
TITLE	KRAMER		NO. 224

DRAWING 40-106