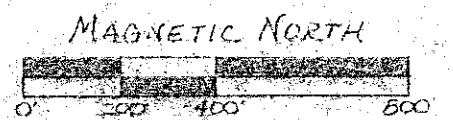


MAP OF SURVEY FOR FIDELITY MARINE BANK

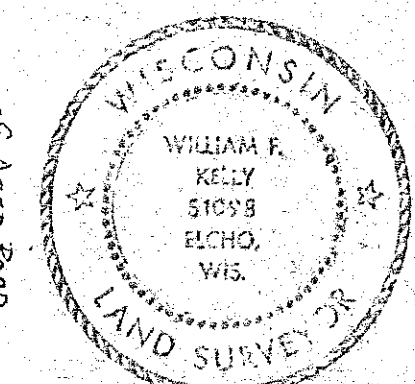
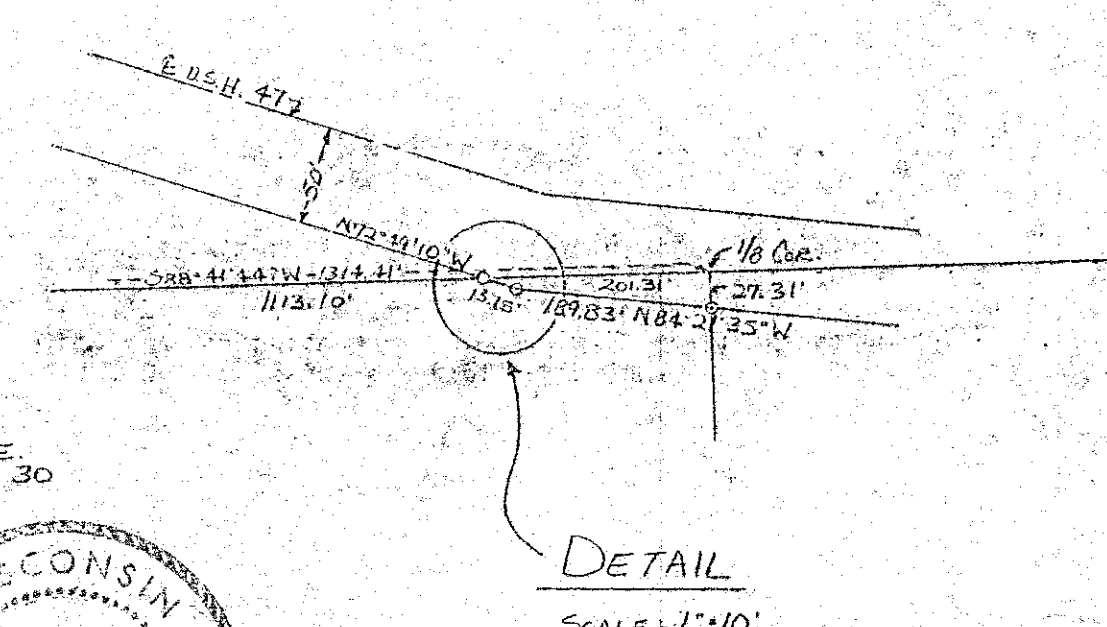
PARTS OF SECTION 30, T30N, R12E
TOWN OF NORWOOD, LANGLADE CO., WISCONSIN

LEGEND:

- 1" x 30" IRON PIPE, SET, 113 1/4" L.F. MIN. WT.
- 2" x 30" IRON PIPE, SET, 365" L.F. MIN. WT.
- △ NAIL SET OVER EXISTING IRON IN ROAD
- 3/4" IRON PIPE, FOUND IN PLACE
- R.R. SPIRE, FOUND IN PLACE
- 1 1/2" BRASS CAP MON., FOUND IN PLACE
- 2" BRASS CAP MON., FOUND IN PLACE
- ⊕ 3" ALUMINUM MONUMENT, SET



SCALE: 1" = 400'

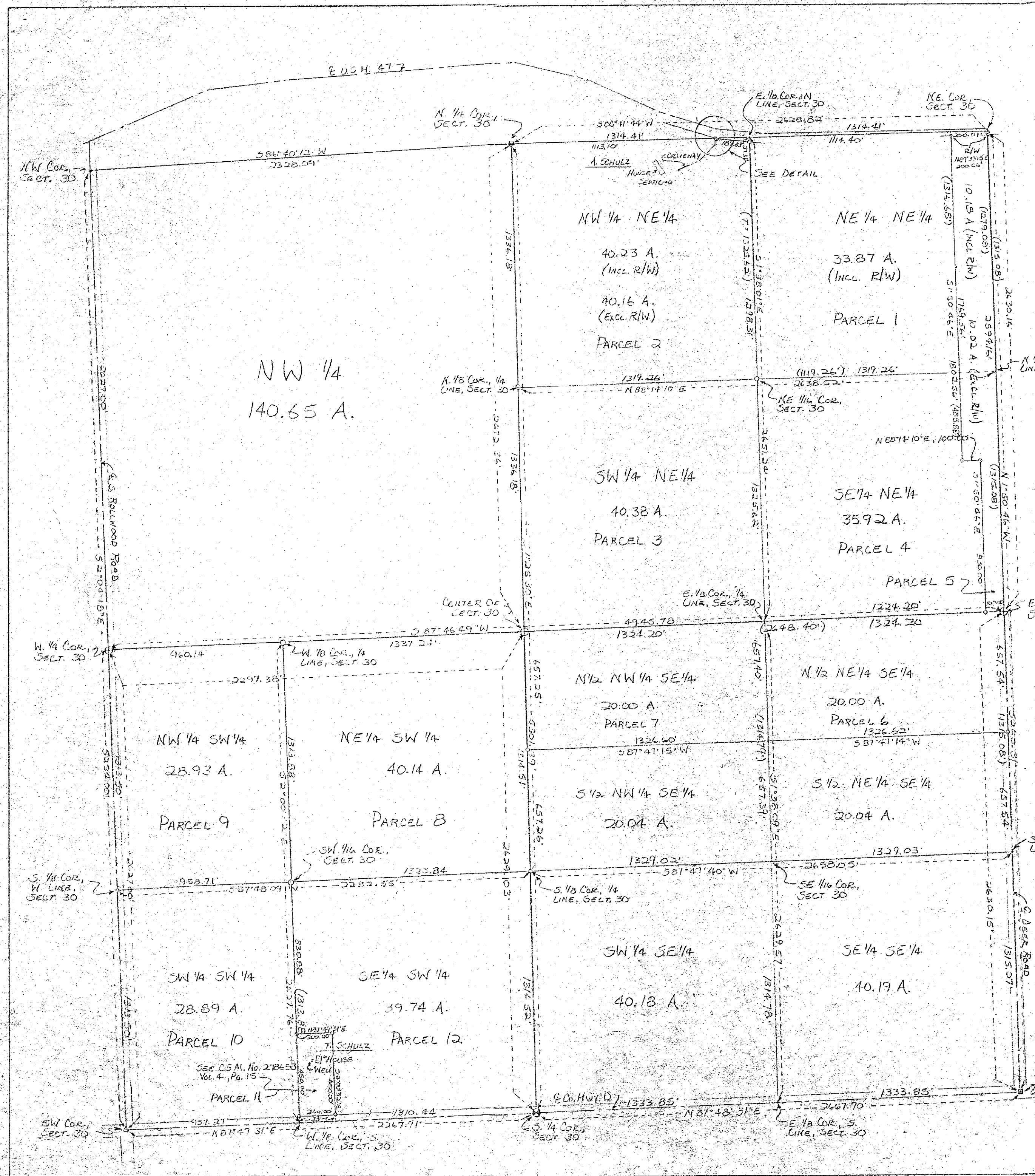


William F. Kelly
9-11-86

BUILDERS SERVICE ENGINEERING DIVISION	
SURVEY MAP	
FOR	
FIDELITY MARINE BANK	
DRAWN BY: LISA REYNOLDS	
SCALE 1" = 400'	DATE SEPT. 11 1986
SHEET 1 OF 1	DWG. NO: 1695
Rev 6/8/87	

RECORD # 30195
LANGLADE COUNTY SURVEYORS OFFICE
DATE FILED: 5/28/93 BY: D.T.

51



NW 1/4
140.55 A.