

# MAP OF SURVEY FOR NORMAN SCHABELL

NW NE & PART OF G.L. 6, SECT. 15, T34N, R11E  
TOWN OF ELCHO, LANGLADE CO, WISCONSIN

**DESCRIPTION:**

A parcel of land being part of the NW 1/4 NE 1/4 and part of Gov't Lot 6, Sect. 15, T34N, R11E, Town of Elcho, Langlade County, Wisconsin, described as follows:

Beginning at the N. 1/4 corner of said Sect. 15; thence along the N-S 1/2 line S02°15'07"E, 1347.27 feet; thence along the N. 1/8 line S86°51'13"E, 1624.73 feet to the shore of Lower Post Lake; thence along said shore N11°56'41"W, 297.74 feet; thence S89°30'26"W, 514.98 feet; thence S33°06'11"W, 294.08 feet; thence N86°51'13"W, 76.18 feet; thence N33°06'11"E, 456.87 feet; thence N56°53'49"W, 225.00 feet; thence N33°06'11"E, 855.40 feet; thence S56°53'49"E, 225.00 feet; thence N33°06'11"E, 206.63 feet; thence along the N. sect. line N85°59'53"W, 1695.64 feet to the point of beginning.

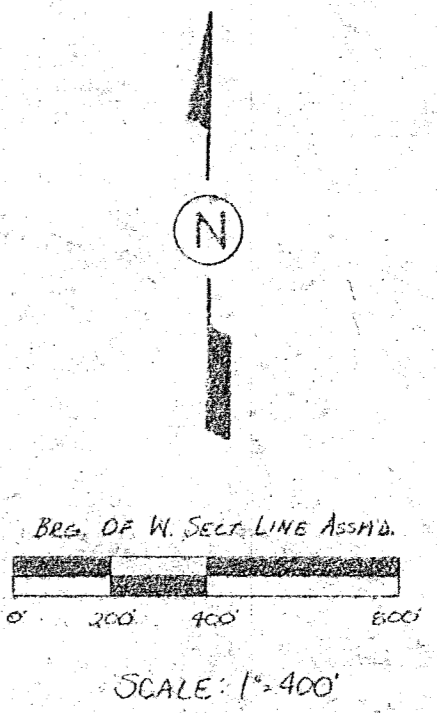
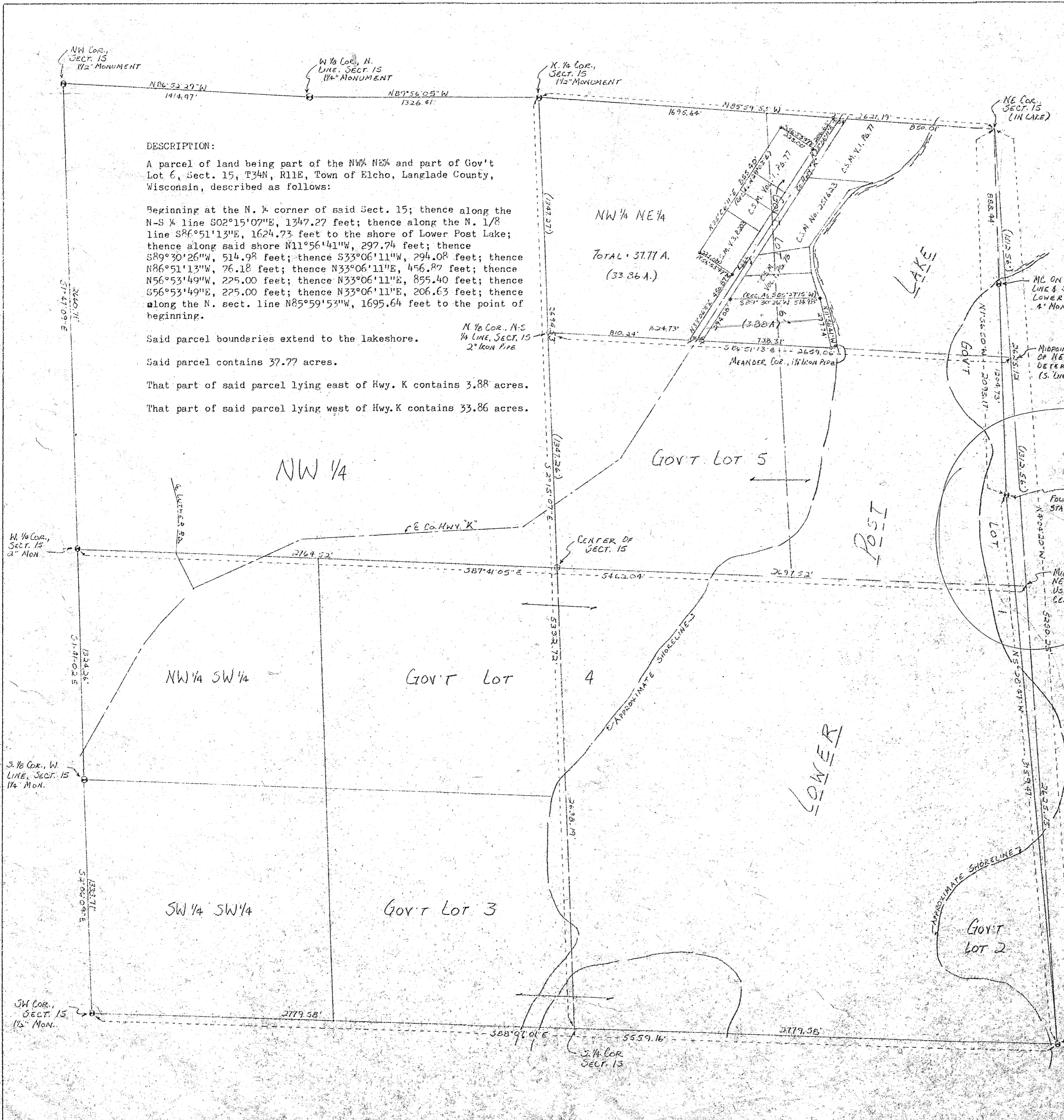
Said parcel boundaries extend to the lakeshore.

Said parcel contains 37.77 acres.

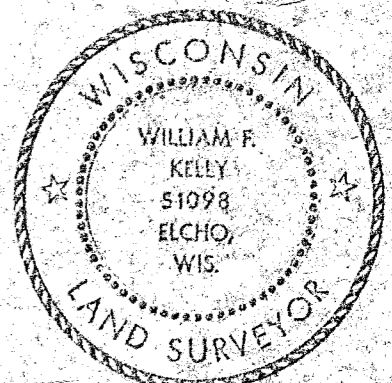
That part of said parcel lying east of Hwy. K contains 3.88 acres.

That part of said parcel lying west of Hwy. K contains 33.86 acres.

NW 1/4 NE 1/4  
Total = 37.77 A.  
(33.86 A.)



- LEGEND:**
- Iron Pipe, Min. Wt. 113#
  - ⊙ PER L.P., SET
  - ⊕ 3" ALUMINUM CAP MONUMENT, SET
  - ⊗ GALVANIZED CAP MONUMENT, FOUND IN PLACE
  - ⊙ BRASS CAP MONUMENT, FOUND IN PLACE



RECORD # 30201  
LANGLADE COUNTY SURVEYORS OFFICE  
DATE FILED: 5/23/93 BY: D.T. William F. Kelly 10-21-85

BUILDERS SERVICE ENGINEERING DIVISION	
SURVEY MAP	
FOR: NORMAN SCHABELL	
NW NE 1/4 GOV'T LOT 6, SECT. 15, T34N, R11E	
DRAWN BY: LISA MEYER	
SCALE 1" = 400'	DATE OCT. 18, 1985
SHEET 1 OF 1	DWG. NO: 1499