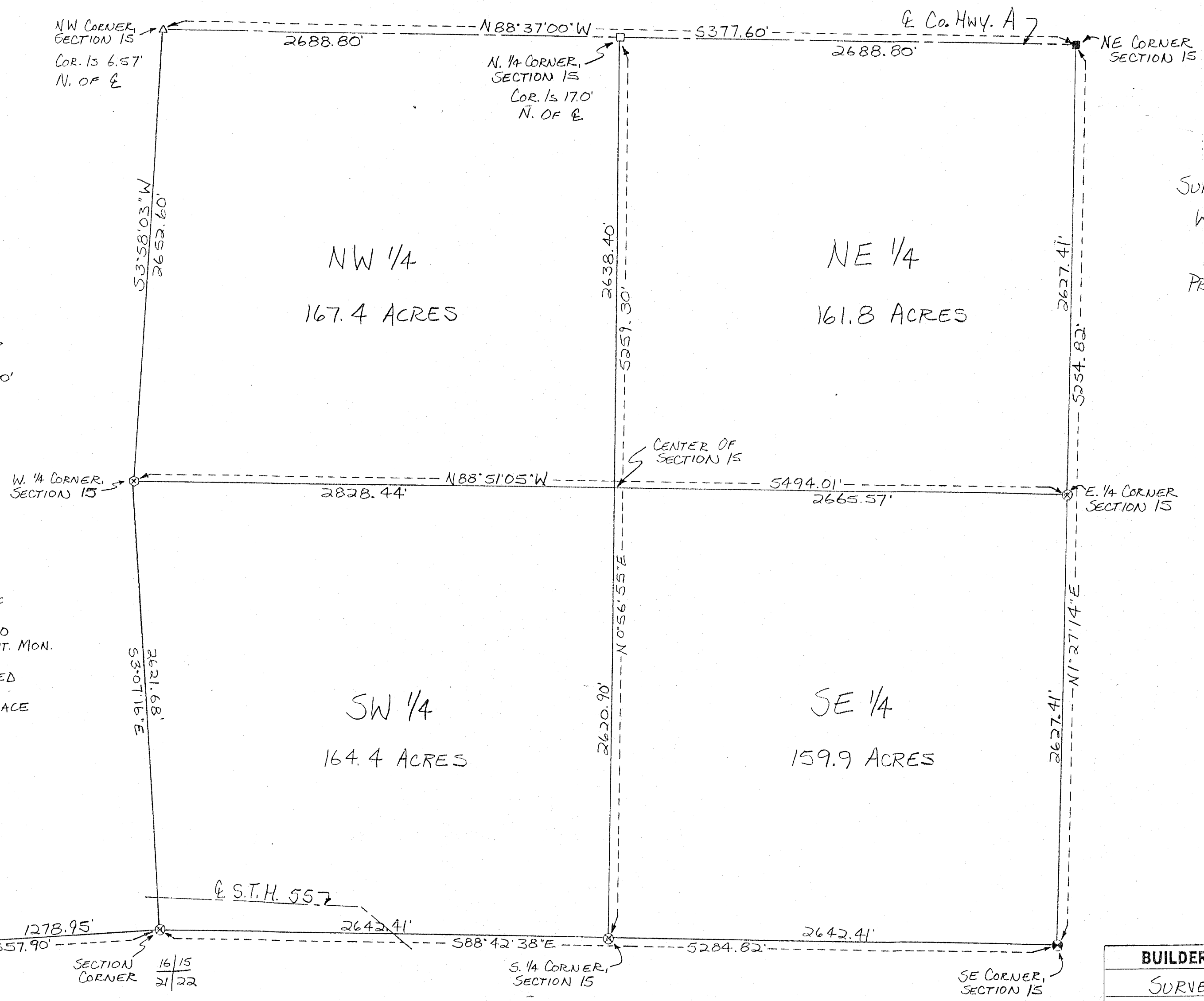
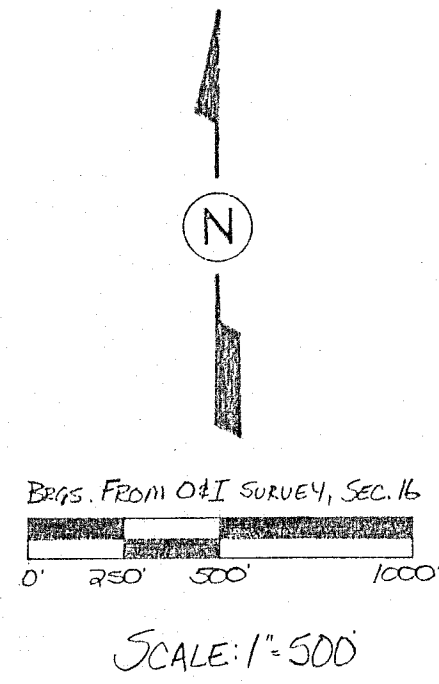
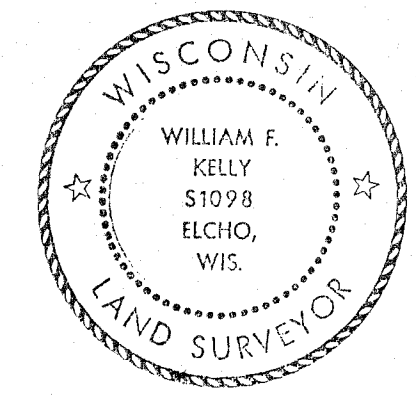


SURVEY OF SECTION 15, T33N, R13E, TOWN OF LANGLADE, LANGLADE COUNTY, WISCONSIN



SURVEY MADE FOR:
WISCONSIN DEPARTMENT
OF TRANSPORTATION
PROJECT 9155-10-00

- LEGEND:**
- ⊗ 1" x 30" IRON PIPE, SET, TO BE REPLACED BY 3" ALUMINUM MONUMENT IN SPRING, 1990
 - △ NAIL, SET FROM EXISTING WIT. MON.
 - R.R. SPIKE, FOUND IN PLACE
 - ⊙ 12" STONE WITH "X" CHISELED ON TOP, FOUND IN PLACE
 - 2" IRON PIPE, FOUND IN PLACE
 - ⊕ 3" ALUMINUM MONUMENT, FOUND IN PLACE
 - R.R. SPIKE, SET



William E. Kelly
1-17-90

BUILDERS SERVICE ENGINEERING DIVISION	
SURVEY OF SECTION 15, T33N, R13E	
FOR: JEFF HESS	
WI DEPT. OF TRANSPORTATION	
DRAWN BY: LISA J. REYNOLDS	
SCALE 1" = 500'	DATE JAN. 16, 1990
SHEET 1 OF 1	DWG. NO: 2301

RECORD # 30226
LANGLADE COUNTY SURVEYORS OFFICE
DATE FILED: 6-3-93 BY: SJF